

BUILDING CODE ANALYSIS		
OPERATIONS BUILDING, CHEMICAL FEED BUILDING, PIPE GALLERY, FILTERS AND BASIN COMPLEX		
LOCATION:	SOUTHEAST WATER TREATMENT PLANT, GUNTERSVILLE DAM, HUNTSVILLE, ALABAMA	
OWNER:	HUNTSVILLE UTILITIES	
DESCRIPTION OF WORK:	CONSTRUCT A TWO STORY OPERATIONS COMPLEX FOR THE SOUTHEAST WATER TREATMENT PLANT. THE COMPLEX WILL PROVIDE FACILITIES FOR ADMINISTRATION AND MAINTENANCE STAFF, A CHEMICAL FEED FACILITY, DIRECT ACCESS TO THE PIPE GALLERY, FILTERS AND SEDIMENTATION AND FLOCCULATION BASIN. THE COMPLEX WILL SERVE AS THE CENTRAL OPERATIONS BUILDING FOR THE OVERALL WATER TREATMENT PLANT GROUNDS AND FACILITY.	
APPLICABLE BUILDING CODES		
2012 INTERNATIONAL BUILDING CODE		
2012 INTERNATIONAL PLUMBING CODE		
2012 INTERNATIONAL MECHANICAL CODE		
2012 INTERNATIONAL FIRE CODE		
2011 NATIONAL ELECTRIC CODE		
ANSI/ASHRAE/IESNA STANDARD 90.1-2007 ENERGY STANDARD FOR BUILDINGS EXCEPT LOW RISE RESIDENTIAL		
2010 AMERICANS WITH DISABILITY ACT ACCESSIBILITY GUIDELINES		
GENERAL INFORMATION		
USE AND OCCUPANCY CLASSIFICATION (IBC CHAPTER 3)	USE GROUPS "B" AND "H-4"	
CONSTRUCTION TYPE CLASSIFICATION (IBC CHAPTER 5)	IIB	
MAXIMUM ALLOWABLE AREA (IBC TABLE 503)		
ACTUAL AREA:	23,000 SF PER FLOOR	
ACTUAL PER FLOOR PROVIDED:		
BASEMENT	NA	
FIRST	22,047 SF	
SECOND	4991 SF	
MAXIMUM ALLOWABLE STORIES (IBC TABLE 503)		
ACTUAL STORIES PROVIDED:	2	
MAXIMUM ALLOWABLE HEIGHT (IBC TABLE 503)		
ACTUAL HEIGHT PROVIDED:	32FT	
DESIGN OCCUPANCY (IBC TABLE 1004.1.2)		
ACTUAL NUMBER OF OCCUPANTS	113	
EGRESS WIDTH BASE ON OCCUPANCY (IBC TABLE 1005.1)		
ALLOWABLE DEAD ENDS (IBC TABLE 1016.3)	50FT	
NUMBER OF EXITS (IBC TABLE 1018.2)		
EXITS PROVIDED:	>2 - REF PLANS	
ALLOWABLE COMMON PATH OF TRAVEL (IBC 1013.3)		
MAXIMUM TRAVEL DISTANCE ALLOWED (IBC TABLE 1015.1)	300FT	
FIRE RESISTANT RATINGS		
BUILDING ELEMENT (IBC TABLE 601)		
PRIMARY STRUCTURAL FRAME BEARING WALLS EXTERIOR INTERIOR	0	0
NONBEARING WALLS & PARTITIONS EXTERIOR (IBC TABLE 602) INTERIOR (IBC TABLE 601)	0	0
FLOOR CONSTRUCTION AND ASSOCIATED SECONDARY MEMBERS	0	0
ROOF CONSTRUCTION AND ASSOCIATED SECONDARY MEMBERS	0	0
OCCUPANCY SEPARATION (IBC 302.3.2)		
INCIDENTAL USE AREAS (IBC 302.2)	N/A	
FIRE SEPARATION DISTANCE (IBC TABLE 602)		
DISTANCE FROM ADJACENT BUILDING OR PROPERTY LINE	>10FT = NO RATING REQUIRED	
FIRE PROTECTION (IFC)		
SPRINKLERS	PROVIDE IN ACCORDANCE WITH IFC 2012 CHAPTER 9 SECTION 903 AT ADMIN AND CHEM FEED PORTIONS OF THE BUILDING.	
FIRE EXTINGUISHERS		
EXIT LIGHTING		
STAIR ILLUMINATION		

### EGRESS TAG LEGEND

EXIT 180	MAXIMUM NUMBER OF OCCUPANTS PERMITTED
STAIR WIDTH	
REQ'D 13.5"	CODE REQUIRED EGRESS WIDTH
PROV. 60"	ACTUAL PROVIDED EGRESS WIDTH
DOOR WIDTH	
REQ'D 9"	CODE REQUIRED EGRESS WIDTH
PROV. 36"	ACTUAL PROVIDED EGRESS WIDTH
MAX. DIST. PERMITTED 300'	CODE PERMITTED MAXIMUM TRAVEL DISTANCE
PROV. 40'	MAXIMUM ACTUAL TRAVEL DISTANCE

EXIT 180	MAXIMUM NUMBER OF OCCUPANTS PERMITTED
DOOR WIDTH	
REQ'D .9"	CODE REQUIRED EGRESS WIDTH
PROV. 36"	ACTUAL PROVIDED EGRESS WIDTH
MAX. DIST. PERMITTED 300'	CODE PERMITTED MAXIMUM TRAVEL DISTANCE
PROV. 15'	MAXIMUM ACTUAL TRAVEL DISTANCE

4	ACTUAL NO. OF OCCUPANTS PER SPACE / ROOM / AREA
12	ACTUAL NO. OF OCCUPANTS PER EXIT

**MEANS OF EGRESS CALCULATIONS:**

PER IBC CHAPTER 10 MEANS OF EGRESS EXIT WIDTH CALCULATION WITH SPRINKLER SYSTEM CALCULATED PER EXIT STAIR

**NOTES:**

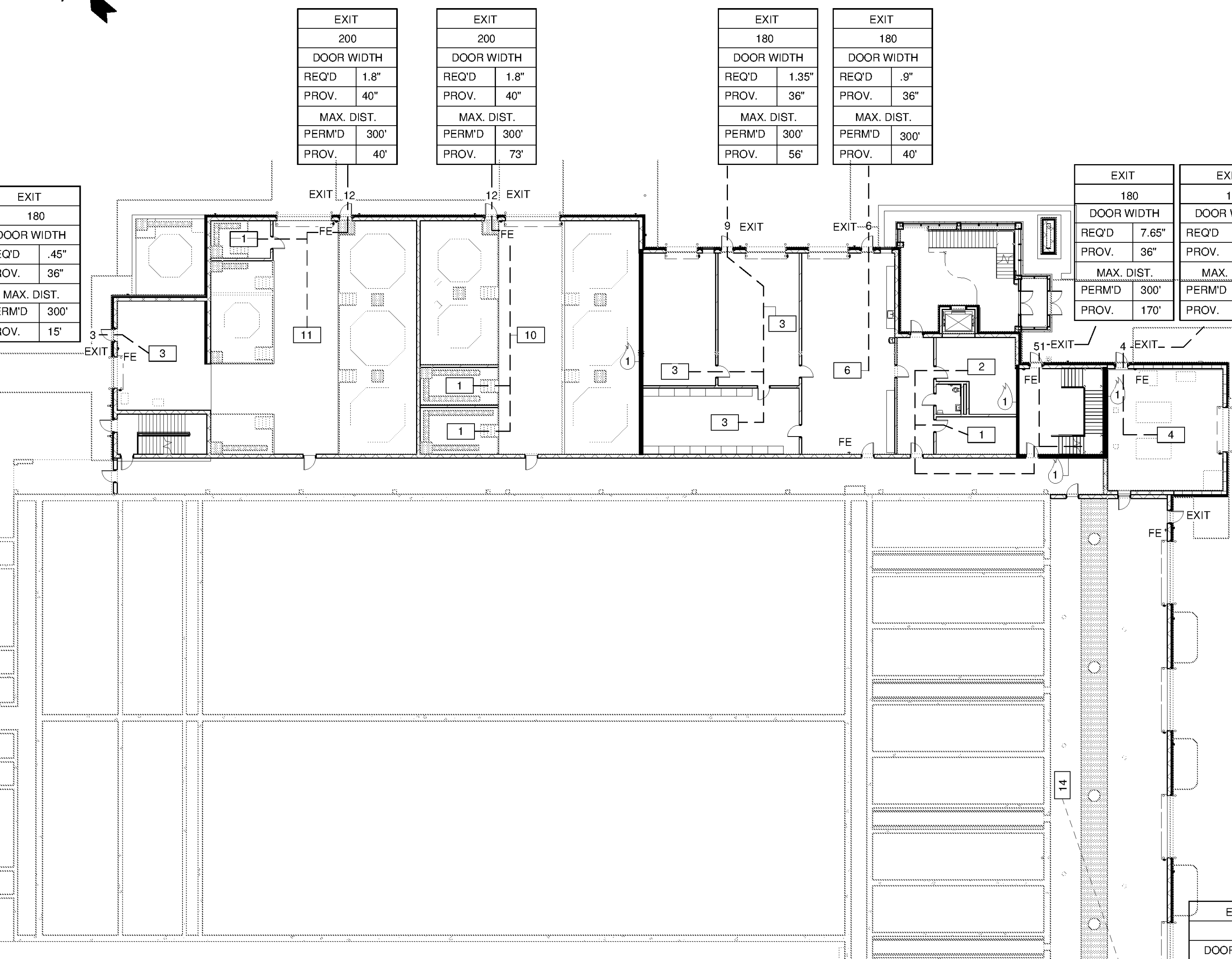
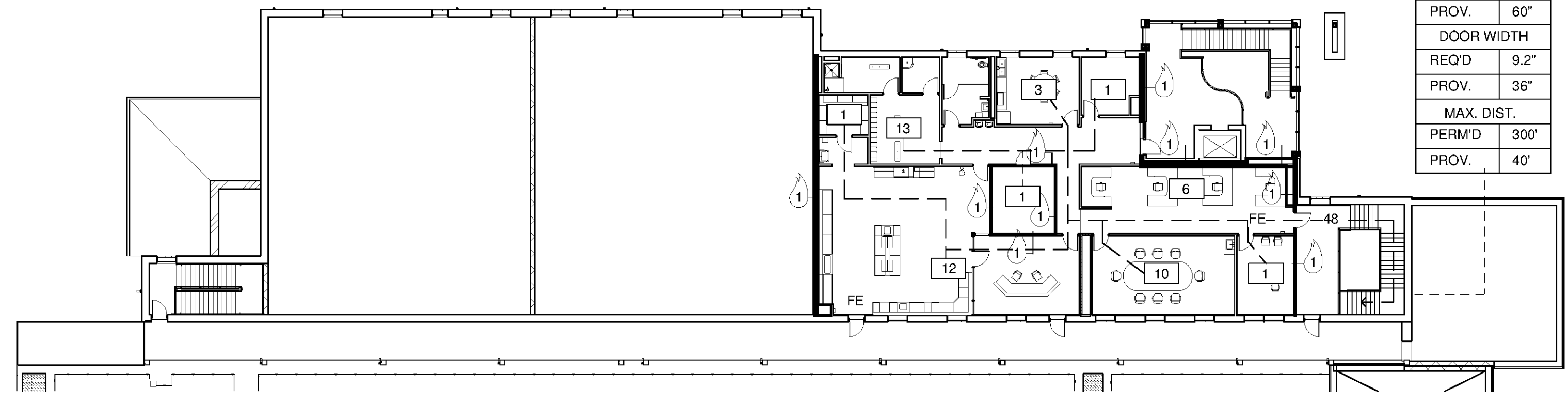
- EGRESS REQUIREMENTS SHALL NOT BE LESS THAN REQUIRED BY 2012 IBC CHAPTER 10 AND ELSEWHERE AS REQUIRED BY APPLICABLE CODE, INCLUDING 2010 ACCESSIBILITY STANDARDS. IN THE EVENT OF DISCREPANCIES BETWEEN CODES, COMPLY WITH THE MORE RESTRICTIVE REQUIREMENT IN ALL CASES.
- MEANS OF EGRESS DOORS SHALL MEET THE REQUIREMENTS OF 2012 IBC SECTION 1008. DOORS PROVIDED FOR EGRESS PURPOSES IN NUMBERS GREATER THAN REQUIRED BY CODE SHALL MEET THE REQUIREMENTS OF THESE SECTIONS.
- PROJECTIONS INTO THE REQUIRED EGRESS CLEAR OPENING WIDTH, INCLUDING HANDRAILS, SHALL COMPLY WITH IBC SECTION 1008.1.1.1 NOT TO EXCEED 4" BETWEEN 27" AND 80" ABOVE THE FLOOR OR GROUND.

**KEY**

1 HOUR WALL

**FIRE EXTINGUISHER NOTES:**

CONFIRM QUANTITY, TYPE AND PLACEMENT OF ALL FIRE EXTINGUISHERS WITH THE FIRE MARSHALL. COORDINATE FINAL LOCATIONS WITH THE ARCHITECT PRIOR TO PLACEMENT. FIRE EXTINGUISHER BASIS OF DESIGN: LARSEN'S MANUFACTURING CO. FIRE EXTINGUISHERS.



TETRA TECH  
 101 QUALITY CIRCLE, SUITE 140  
 HUNTSVILLE, ALABAMA 38806  
 PHONE: (256) 424-4077 FAX: (256) 424-4087  
 BID SET  
 STATE OF ALABAMA  
 J. QUINCY BAGG JR.  
 GOVERNOR  
 6512  
 10/21/14

BY	DATE	DESCRIPTION

HUNTSVILLE UTILITIES  
SOUTHEAST WATER TREATMENT PLANT  
BUILDING CODES ANALYSIS

Project No.: 200-11740-10003  
 Designed By: Q.BIAGI  
 Drawn By: S.SWEARER  
 Checked By: D.GALANTE

# A-2101

Copyright: Tetra Tech  
Bar Measures 1 inch

10/3/2014 2:58:15 PM C:\Users\Quintin.Blagi\Documents\WTP-11740-A-MAINPR\_Quintin.Blagi.rvt