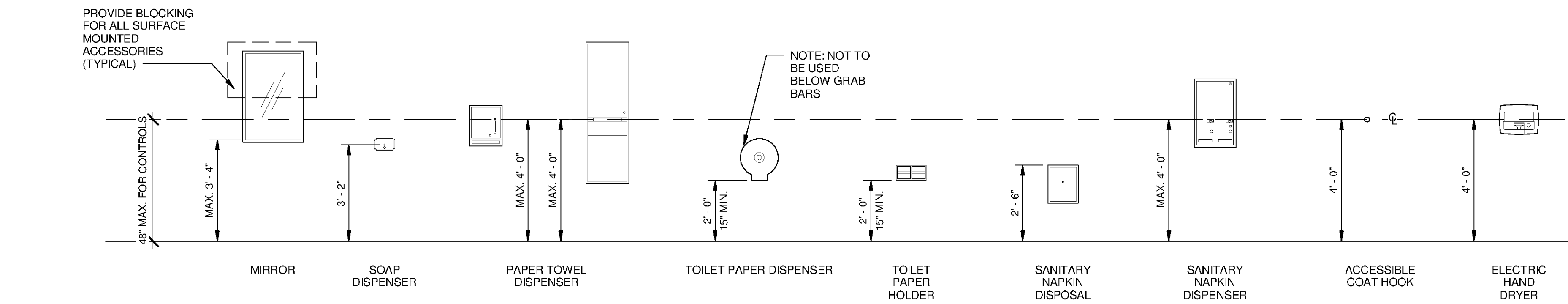
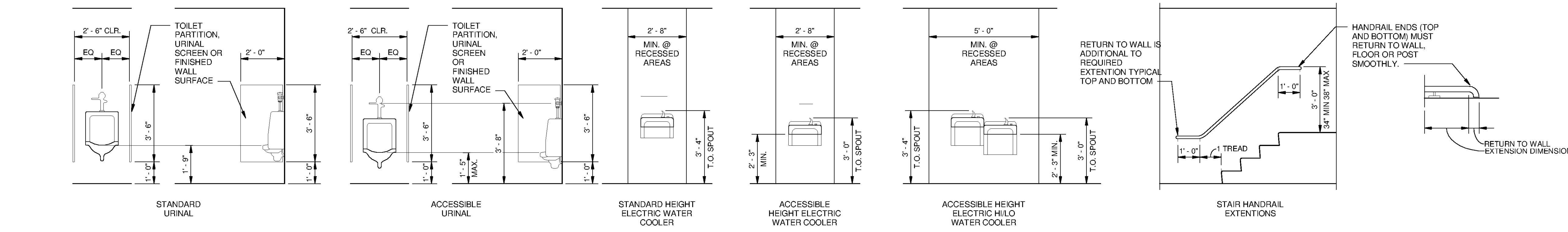
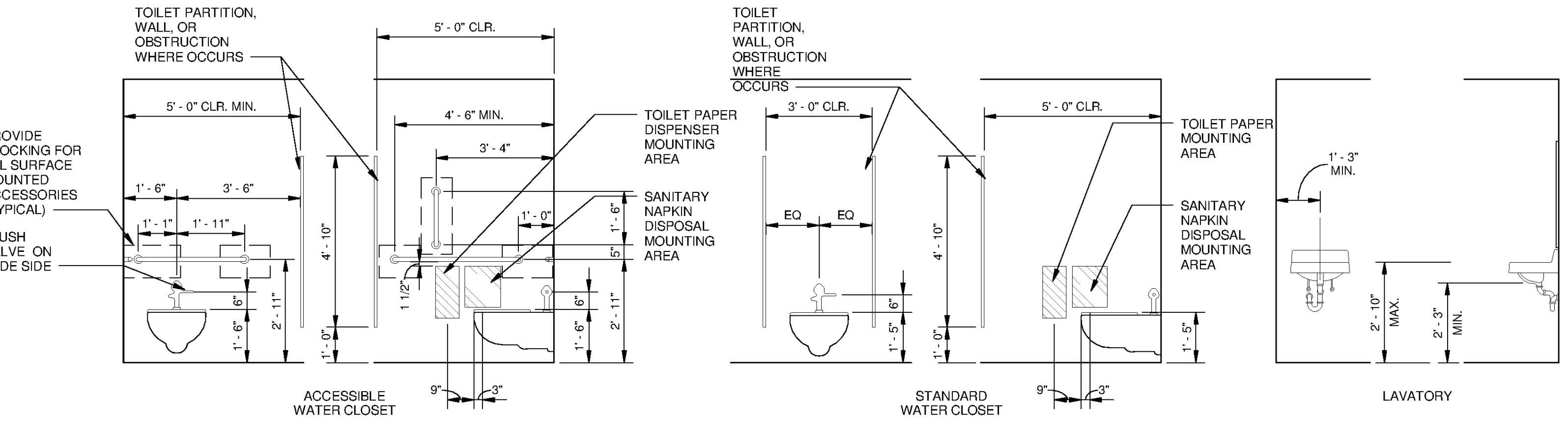


GENERAL NOTES - ACCESSORY MOUNTING HEIGHTS	
A.	IT IS THE INTENT OF THE DESIGN THAT ALL ITEMS SHOWN MOUNTED AT TYPICAL HEIGHTS FOR COMPLIANCE WITH GOVERNING AUTHORITY OF ADAAG OR ANSI 117.1
B.	THE PURPOSE OF THIS SHEET IS TO ILLUSTRATE TYPICAL MOUNTING HEIGHTS AND - WHERE APPLICABLE - TYPICAL MINIMUM OR MAXIMUM CLEARANCES AND/OR TYPICAL MOUNTING CONFIGURATIONS FOR A VARIETY OF ITEMS. CAUTION: THIS SHEET MAY ILLUSTRATE ITEMS OR CONFIGURATIONS WHICH DO NOT OCCUR AS PART OF THE WORK OF THIS PROJECT. REFER TO THE PLANS, ELEVATIONS, SECTIONS, DETAILS AND SCHEDULES TO DETERMINE WHICH ITEMS AND CONFIGURATIONS APPLY TO THE WORK OF THIS PROJECT.
C.	THE MOUNTING HEIGHTS, CLEARANCES, AND CONFIGURATIONS SHOWN ON THIS SHEET ARE TYPICAL AND SHALL APPLY TO ALL INSTANCES OF THE ITEM (OR GROUP OF ITEMS) SHOWN UNLESS SPECIFICALLY NOTED OR DIMENSIONED OTHERWISE.
D.	SPECIAL OR NON-TYPICAL MOUNTING HEIGHTS OCCUR ONLY WHERE INDICATED BY ANNOTATED SYMBOLS; BY KEY NOTES; BY NOTES ON PLANS, ELEVATIONS, OR DETAILS; OR BY UNIQUE DIMENSIONS ON ELEVATIONS OR DETAILS.
E.	MOUNTING HEIGHTS, DIMENSIONS, CLEARANCES, AND ACCESS REQUIREMENTS FOR TOILET ACCESSORIES SHOWN ON THIS SHEET ARE BASED UPON SPECIFIC MANUFACTURERS AND MODELS AS INDICATED BY THE "EQUIPMENT SCHEDULE". WHEN SIMILAR ACCESSORIES OF OTHER SPECIFIED ACCEPTABLE MANUFACTURES (IF ANY) ARE UTILIZED, MOUNTING HEIGHTS, CLEARANCES, AND ACCESS REQUIREMENTS OF THE SIMILAR ACCESSORIES MAY VARY FROM THOSE SHOWN. WHEN SIMILAR ACCESSORIES ARE UTILIZED, THE CONTRACTOR SHALL BE RESPONSIBLE FOR ALL COORDINATION REQUIRED TO ACHIEVE THE SAME AESTHETIC AND FUNCTIONAL DESIGN INTENT ILLUSTRATED BY THAT SHOWN ON THE DRAWINGS.
F.	TACTILE EXIT SIGNS. A TACTILE EXIT SIGN STATING "EXIT" AND COMPLYING WITH ANSI A117.1 SHALL BE PROVIDED ADJACENT TO EACH DOOR TO AN EGRESS STAIRWAY, AN EXIT PASSAGEWAY AND EXIT DISCHARGE.
G.	PROVIDE BLOCKING PER MANUFACTURER'S GUIDELINES FOR ALL SURFACE MOUNTED ACCESSORIES.



TOILET ACCESSORIES, DEVICE, AND EQUIPMENT MOUNTING HEIGHTS



MOUNTING HEIGHT STANDARDS

(NOTE: SOME ITEMS SHOWN MAY NOT BE APPLICABLE TO THE PROJECT)

TETRA TECH

www.tetrattech.com

101 QUALITY CIRCLE, SUITE 140
HUNTSVILLE, ALABAMA 35896
PHONE: (256) 424-4077 FAX: (256) 424-4087

BID SET

STATE OF ALABAMA

J. QUINCY BRACK JR.

APR 18 2014

6512

10/21/14

MARK	DATE	DESCRIPTION	BY

HUNTSVILLE UTILITIES

SOUTHEAST WATER TREATMENT PLANT

ARCHITECTURAL STANDARDS

Project No.: 200-11740-10003
Designed By: Q.BIAGI
Drawn By: Q.BIAGI
Checked By: D.GALANTE

A-0002

Bar Measures 1 Inch