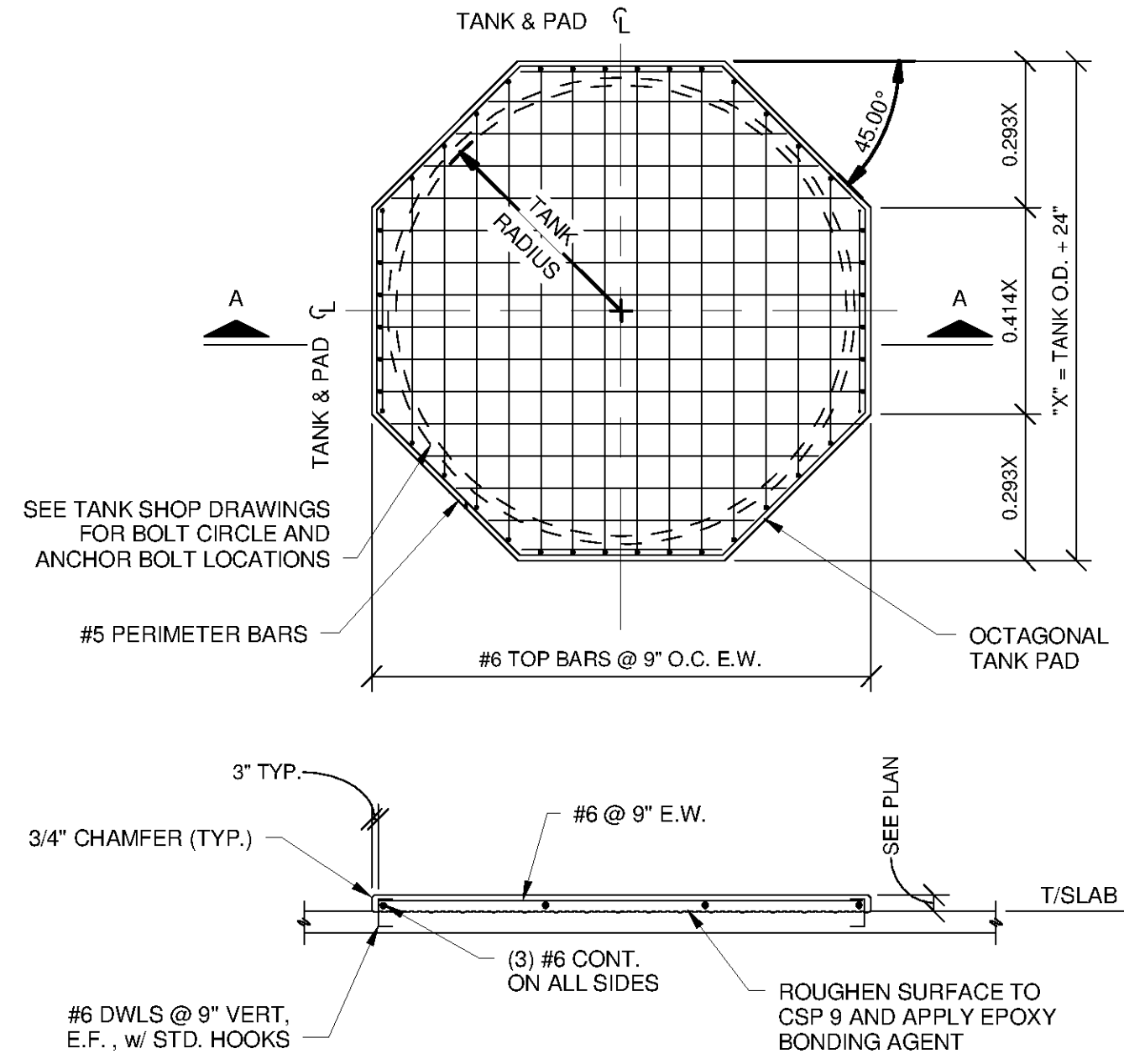


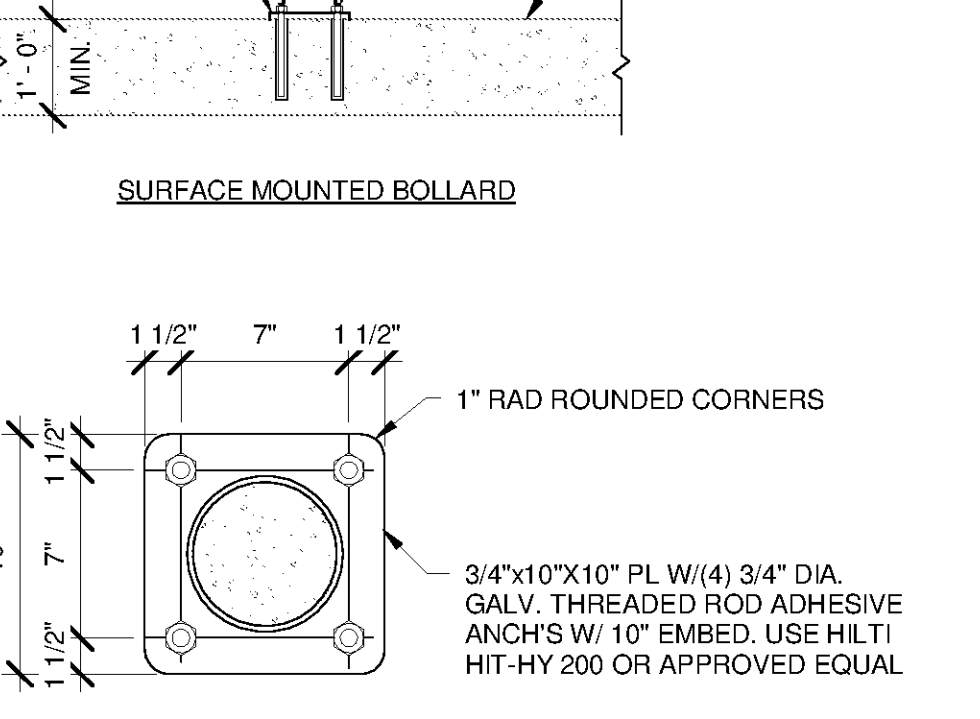
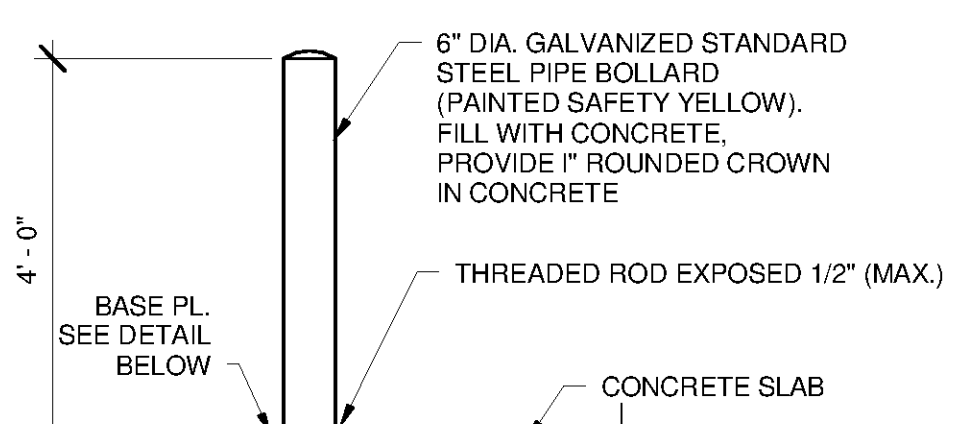
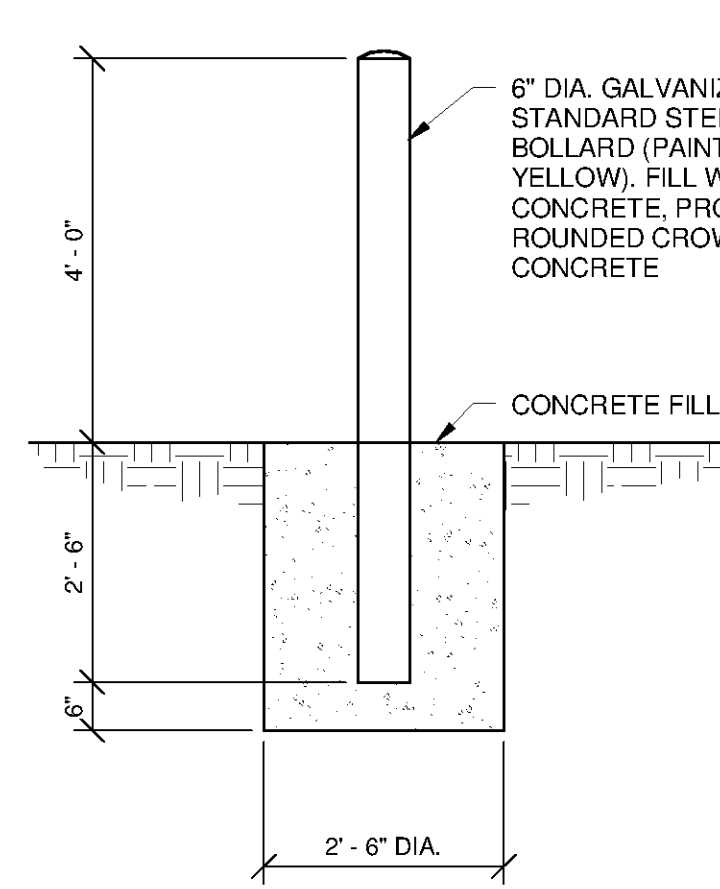
- EQUIPMENT PAD NOTES:**
- "A", "B" & "C" DIMS. AS REQ'D TO SUIT EQUIPMENT. ("C" = 6" TYP. U.N.O.)
 - FOR PADS < 12" THICK, REINFORCE THE TOP AND SIDES WITH #4@9" O.C., E.W.
 - FOR PADS > 12" THICK, REINFORCED TOP AND SIDES WITH #6@9" O.C., E.W.

1 TYP. EQUIPMENT PAD
SCALE: 3/4" = 1'-0"



SECTION A-A

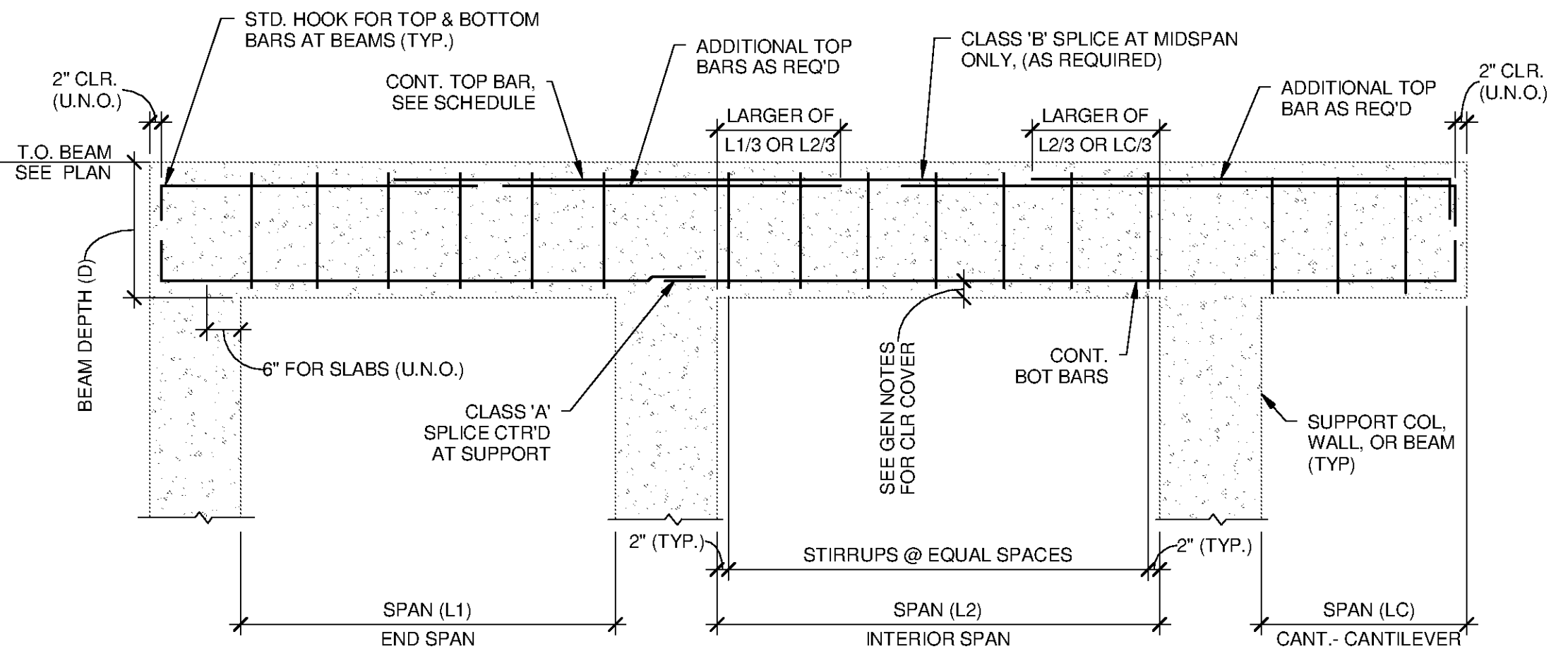
2 TYP. OCTAGONAL TANK PAD
SCALE: N.T.S.



CAST - IN - PLACE BOLLARD

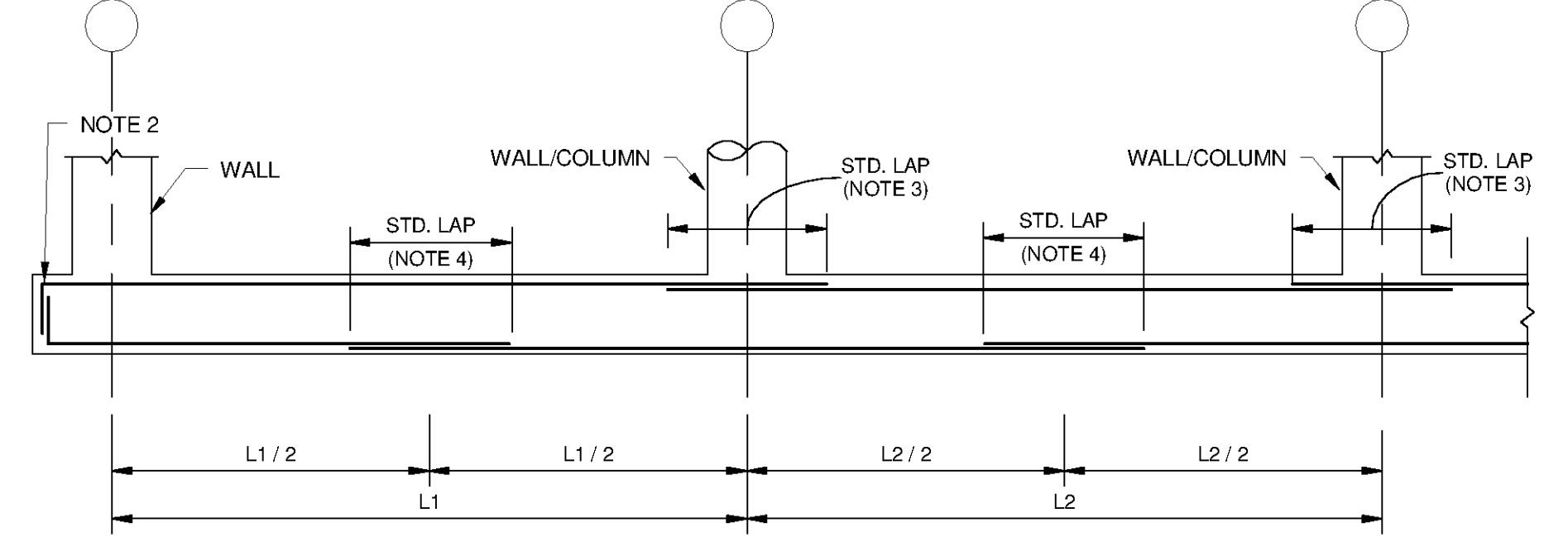
SURFACE MOUNTED BOLLARD

3 TYP. BOLLARD DETAIL
SCALE: 1/2" = 1'-0"



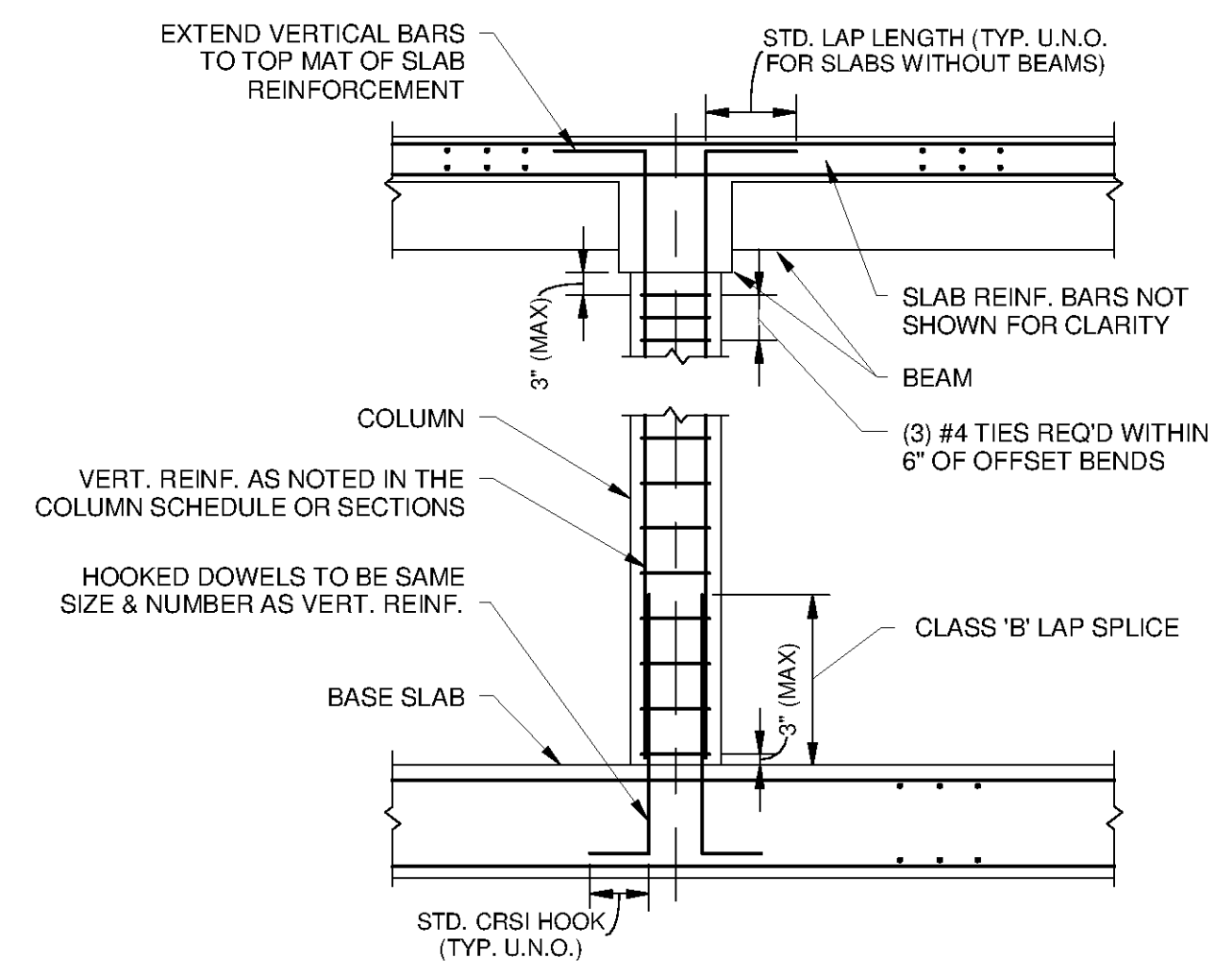
- CONCRETE BEAM/SLAB NOTES:**
- TEMPERATURE REINFORCING FOR SLABS SHALL BE PLACED PERPENDICULAR TO BOTTOM AND TOP REINFORCING AS INNER LAYER.
 - REFER TO PLANS AND SECTIONS FOR REINFORCING SIZE AND SPACING.

4 CONCRETE BEAM AND SLAB REINF. DETAIL
SCALE: 1/2" = 1'-0"



- CONC MAT SLAB NOTES:**
- ALL BARS TO BE CONTINUOUS EXCEPT AS NOTED AT EXPANSION JOINTS.
 - AT NON-CONTINUOUS ENDS OF SLAB, TOP AND BOTTOM BARS SHALL BE HOOKED WHERE SHOWN ON DRAWINGS
 - LAP SPLICES FOR TOP BARS SHALL BE AT CENTERLINE OF SUPPORTS.
 - LAP SPLICES FOR BOTTOM BAR SHALL BE AT MIDSPAN BETWEEN CENTERLINE OF SUPPORTS.

5 CONCRETE MAT SLAB REINF. DETAIL
SCALE: 1/2" = 1'-0"



6 CONCRETE COLUMN REINF DETAIL
SCALE: 1/2" = 1'-0"

TETRA TECH
www.tetrattech.com
101 QUALITY CIRCLE, SUITE 140
HUNTSVILLE, ALABAMA 35896
PHONE: (256) 424-4077 FAX: (256) 424-4087

BID SET
ALABAMA
PROFESSIONAL
REGISTERED ENGINEER
NO. 35153-E
RICHARD G. MCNEEL
10/23/14

MARK	DATE	DESCRIPTION	BY

HUNTSVILLE UTILITIES
SOUTHEAST WATER TREATMENT PLANT
**STANDARD STRUCTURAL
DETAILS - CONCRETE**

Project No.: 200-11740-10003
Designed By: JLB
Drawn By: BRF
Checked By: CDC

S-9504