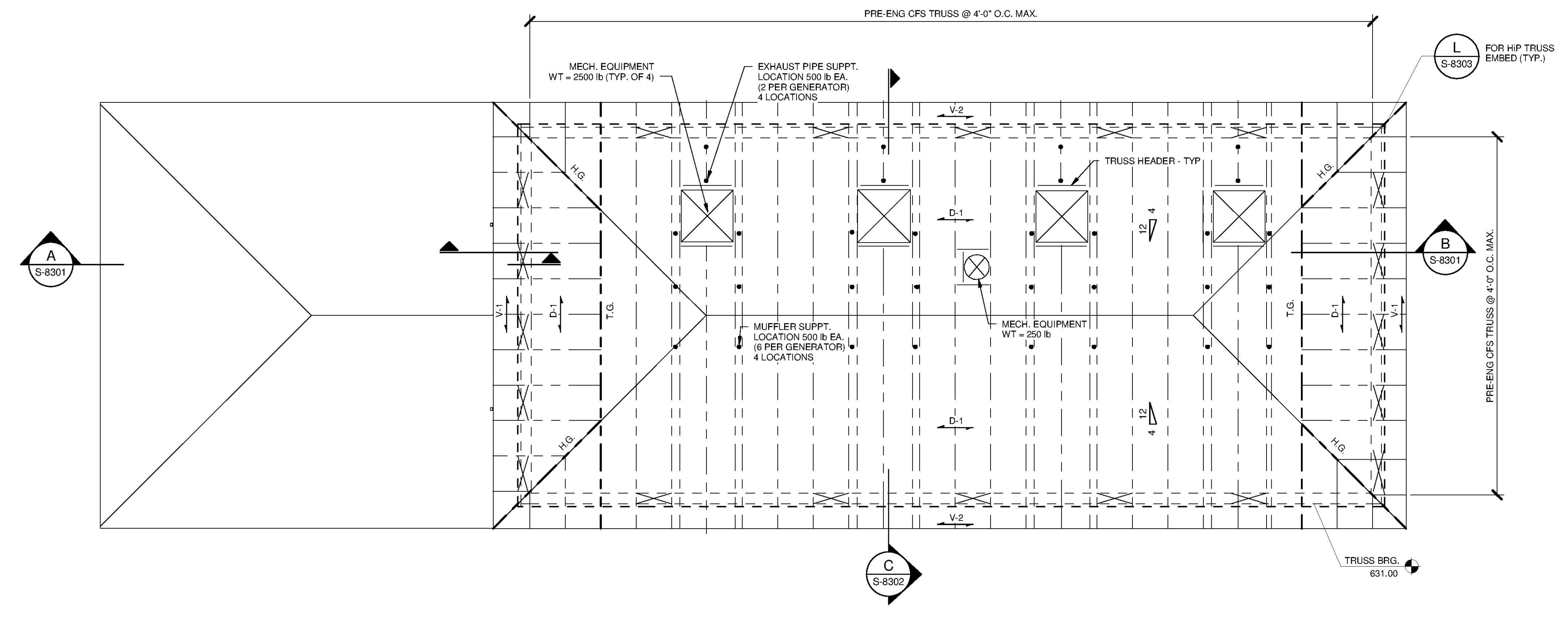
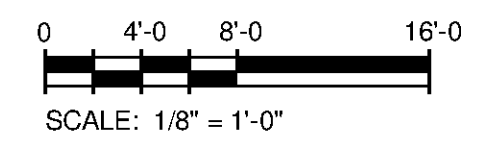


LOWER ROOF FRAMING PLAN
SCALE: 1/8" = 1'-0"

- ROOF PLAN NOTES:**
- REFER TO G-0003 FOR OVERALL SITE PLAN AND PROCESS AREA LOCATIONS
 - REFER TO S-001 THRU S-003 FOR GENERAL NOTES
 - TRUSS BEARING ELEVATION = 619.00 (LOW ROOF)
631.00 (HIGH ROOF)
 - ROOF TRUSSES SHALL BE DESIGNED TO INCLUDE A 10 PSF COLLATERAL LOAD WHICH INCLUDES ALL HANGING LOADS FOR SPRINKLERS, DUCTWORK, PLUMBING, CEILING AND OTHER COMPONENTS.
 - CONTRACTOR SHALL PROVIDE TRUSS MFR. WITH LOCATION OF ALL HANGING LOADS PRIOR TO TRUSS DESIGN
- LEGEND:**
- D-1 DENOTES SPAN DIRECTION OF 1 1/2"-20 GA. TYPE 'B' (Fy=33 KSI) STEEL ROOF DECK. ROOF DECK IS A DIAPHRAGM. ATTACH TO SUPPORTING STEEL W/ #12 TEK SCREWS IN A 36/9 PATTERN AND 8" O.C. AT RIDGES, HIPS AND LONGITUDINAL SUPPORTS. SIDELAP FASTENERS #10 TEK SCREWS @ 12" O.C.
 - X DENOTES TRUSS HEEL BRACING PROVIDED BY TRUSS MFR. TO RESIST DIAPHRAGM SHEAR
 - V-1 INDICATES 425 lb/ft SERVICE SHEAR LOAD TO BE RESISTED BY TRUSS HEEL BRACING
 - V-2 INDICATES 100 lb/ft SERVICE SHEAR LOAD TO BE RESISTED BY TRUSS HEEL BRACING
 - V-3 INDICATES 150 lb/ft SERVICE SHEAR LOAD TO BE RESISTED BY TRUSS HEEL BRACING
 - T.G. - INDICATES TRUSS GIRDER
 - H.G. - INDICATES HIP TRUSS GIRDER
 - # 12 - INDICATES ROOF SLOPE, COORD W/ ARCH. DWGS.
 - L-# - INDICATES CMU LINTEL, REF: TYP. DETAILS FOR SCHEDULE



HIGH ROOF FRAMING PLAN
SCALE: 1/8" = 1'-0"



TETRA TECH
www.tetra.tech.com
101 QUALITY CIRCLE, SUITE 140
HUNTSVILLE, ALABAMA 35806
PHONE: (256) 424-4077 FAX: (256) 424-4087

BID SET
ALABAMA PROFESSIONAL ENGINEER
No. 25103-E
J. R. G. JR.
10/24/14

BY	DESCRIPTION	DATE	MARK

HUNTSVILLE UTILITIES
SOUTHEAST WATER TREATMENT PLANT
**GENERATOR BUILDING
ROOF FRAMING PLANS**

Project No.: 200-11740-10003
Designed By: JRG
Drawn By: BRF
Checked By: CDC

S-8102