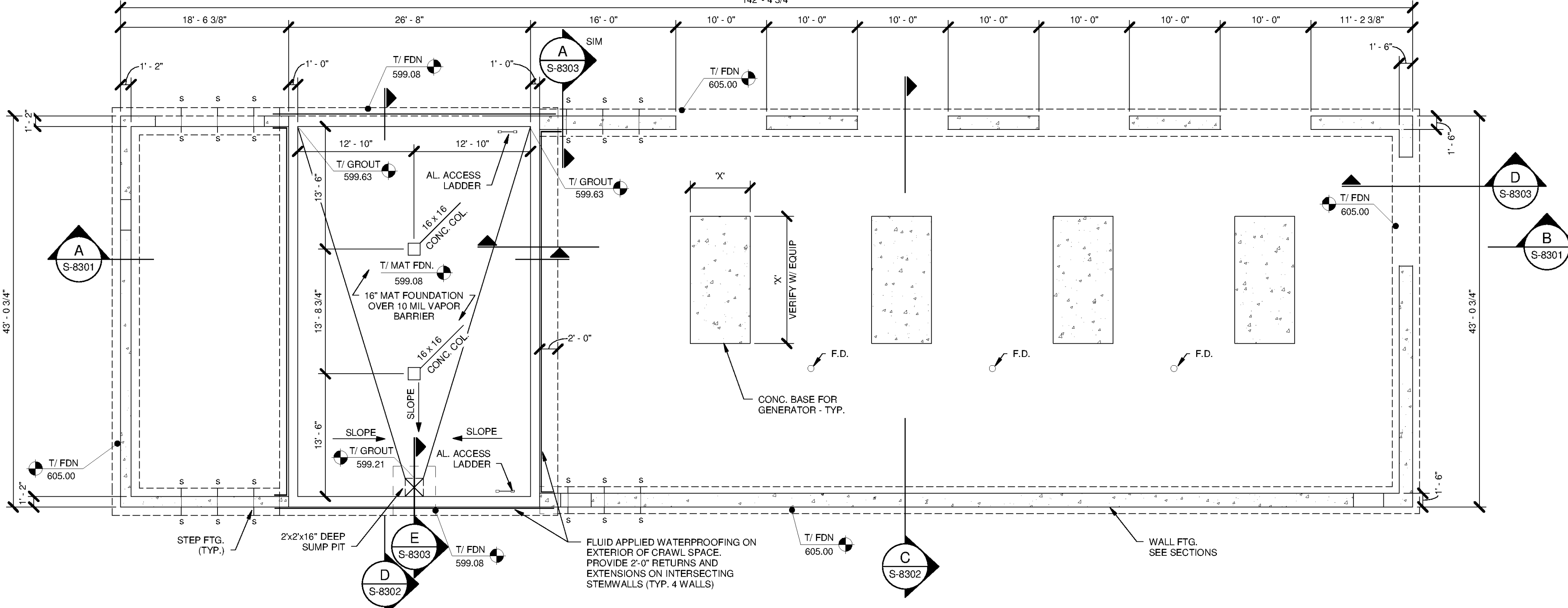
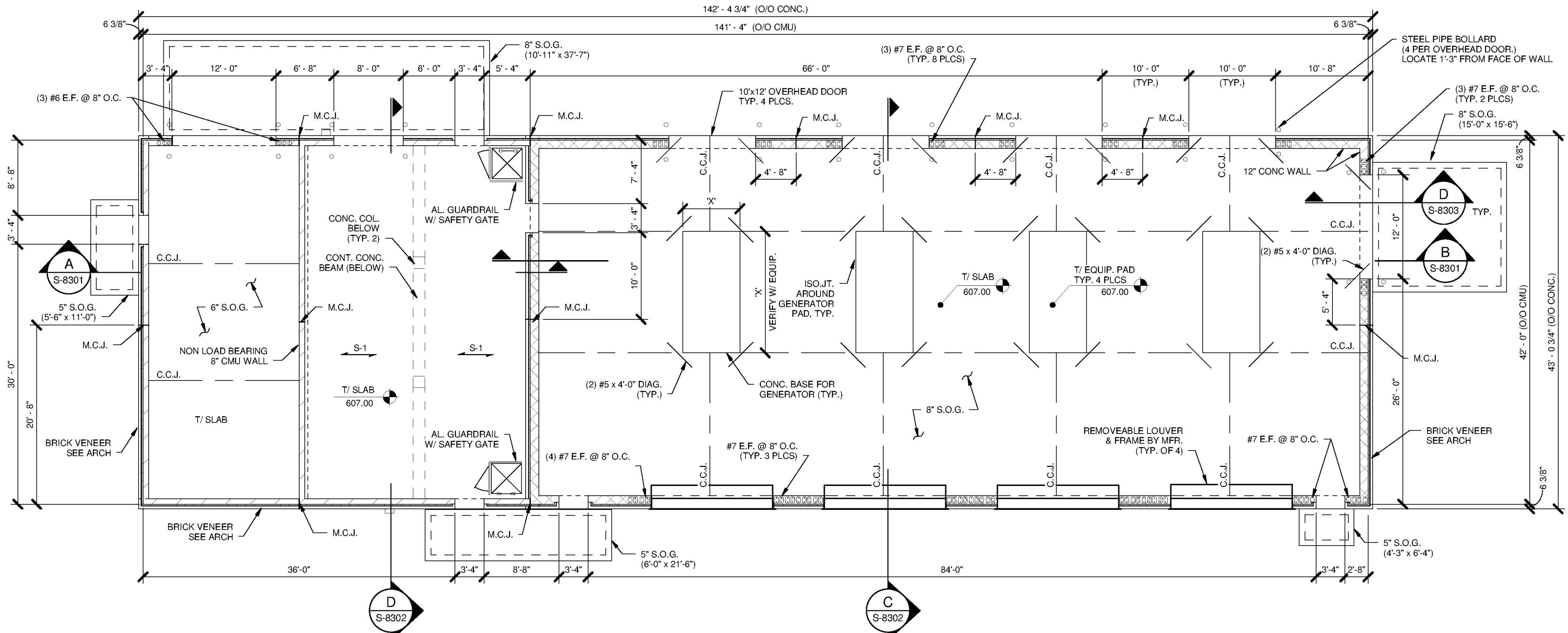


1 2 3 4 5 6 7

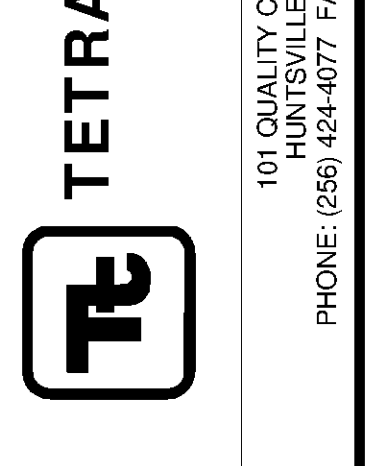
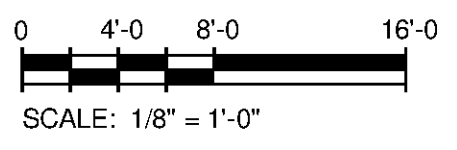


- PLAN NOTES:**
- REFER TO S-001 THRU S-003 FOR GENERAL NOTES
 - REFER TO G-0003 FOR OVERALL SITE KEY PLAN AND PROCESS AREA LOCATIONS
 - TOP OF FOOTING ELEVATION = 605.00, U.N.O.
 - BELOW GRADE WALLS AT ELECTRICAL ROOM SHALL BE WATERTIGHT W/ WATERSTOPS AT ALL CONSTRUCTION JOINTS.
 - 5" S.O.G., INDICATES 5" THICK CONC. SLAB ON GRADE REINFORCED W/ 6x6-W2.9xW2.9 WWF PLACED 2" FROM T/S LAB. TURN DOWN EDGES TO 8"x12" W (2) #5 CONT. BOT.
 - 8" S.O.G., INDICATES 8" THICK CONC. SLAB ON GRADE REINFORCED W/ #6 @ 12" O.C., E.W. PLACED 2" FROM T/ SLAB
 - REFER TO TYPICAL DETAIL SHEETS FOR EQUIP. PAD DETAILS. COORDINATE W/ EQUIP. MFR. DWGS PRIOR TO CONSTRUCTION
 - TOP SLAB DESIGN LIVE LOADS:
ELECT. ROOM = 300 PSF
GENERATOR ROOM = 8000 lb FORKLIFT WHEEL
 - WALLS OF ELECTRICAL CRAWL SPACE MAY BE BACKFILLED PRIOR TO POURING THE TOP SLAB
- LEGEND:**
- INDICATES 8" CMU W/ #5 VERTICALS CTDRD IN GROUT FILLED CELLS 32" O.C. MAX., CORNERS, AND INTERSECTIONS, U.N.O. OPENINGS < 4'-0" WIDE SHALL RECEIVE (2) #5 VERT. (CTRD) EA. SIDE OPENINGS > 4'-0" WIDE SHALL RECEIVE (2) #6 E.F., EA. SIDE U.N.O.
- INDICATES 12" CMU W/ #6 VERTICALS E.F. IN GROUT FILLED CELLS 24" O.C. MAX., CORNERS, AND INTERSECTIONS, U.N.O. OPENINGS < 4'-0" WIDE SHALL RECEIVE (1) #5 VERT. (CTRD.) EA. SIDE OPENINGS > 4'-0" WIDE SHALL RECEIVE REINF. AS NOTED
- S-1 SPAN DIRECTION OF 12" CONCRETE SLAB W/ #6 @ 6" O.C. TOP & BOT., #6 @ 12" O.C. TOP & BOT. TRANSVERSE
- M.C.J. INDICATES MASONRY CONTROL JOINT
- C.C.J. INDICATES SLAB CRACK CONTROL JOINT
- S — S DENOTES STEPPED FOOTING, RE: S/ S-9502

FOUNDATION PLAN
SCALE: 1/8" = 1'-0"



SLAB PLAN
SCALE: 1/8" = 1'-0"



BID SET
ALABAMA
PROFESSIONAL ENGINEER
No. 25132-E
J. R. G. JR.
10/24/14

BY	DATE	DESCRIPTION

HUNTSVILLE UTILITIES
SOUTHEAST WATER TREATMENT PLANT
GENERATOR BUILDING FOUNDATION PLAN

Project No.: 200-11740-10003
Designed By: JRG
Drawn By: BRF
Checked By: CDC

S-8101

9/30/2014 1:56:38 PM C:\Users\brent.fox\Documents\WTP-11740-GENATR-Central_brent.fox.rvt