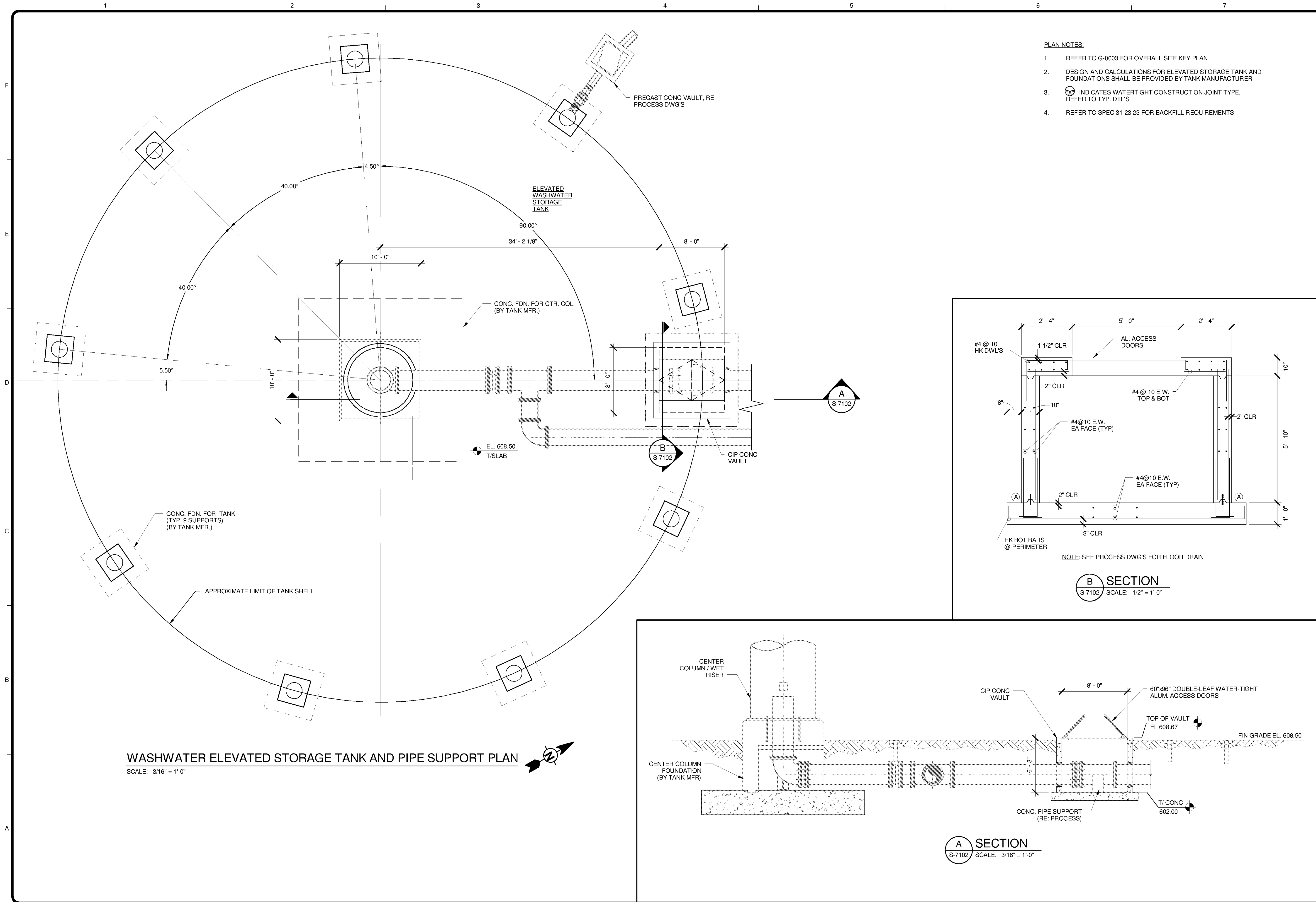
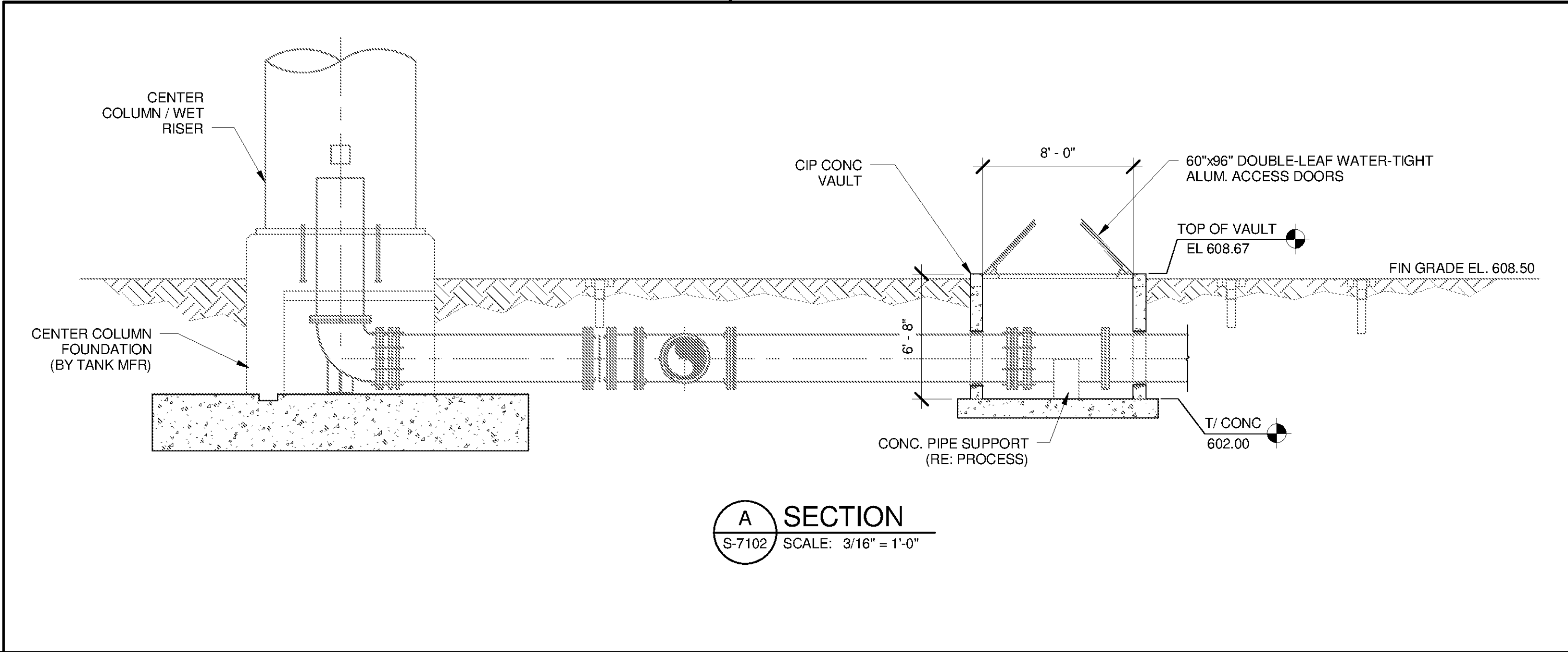
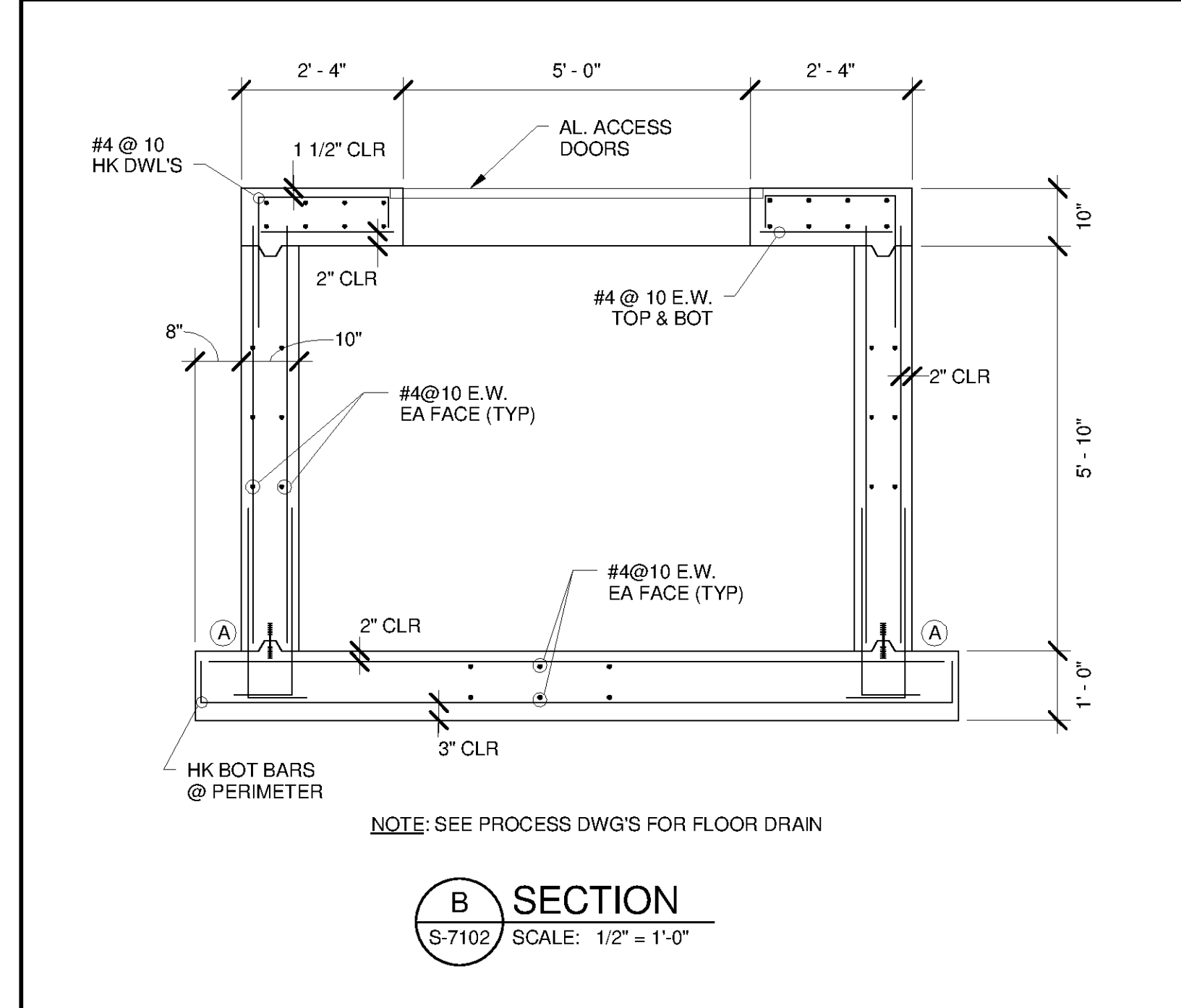


10/1/2014 3:11:36 PM C:\Users\brent.fox\Documents\WTP-11740-S-WASHBA\_brent.fox.rvt



- PLAN NOTES:**
- REFER TO G-0003 FOR OVERALL SITE KEY PLAN
  - DESIGN AND CALCULATIONS FOR ELEVATED STORAGE TANK AND FOUNDATIONS SHALL BE PROVIDED BY TANK MANUFACTURER
  - ⊗ INDICATES WATERTIGHT CONSTRUCTION JOINT TYPE. REFER TO TYP. DTL'S
  - REFER TO SPEC 31 23 23 FOR BACKFILL REQUIREMENTS



**WASHWATER ELEVATED STORAGE TANK AND PIPE SUPPORT PLAN**  
SCALE: 3/16" = 1'-0"

**TETRA TECH**  
www.tetra-tech.com  
101 QUALITY CIRCLE, SUITE 140  
HUNTSVILLE, ALABAMA 35806  
PHONE: (256) 424-4077 FAX: (256) 424-4087

**BID SET**  
ALABAMA  
LICENSED PROFESSIONAL ENGINEER  
No. 35103-E  
J. L. BENTLEY  
10/24/14

MARK	DATE	DESCRIPTION	BY

HUNTSVILLE UTILITIES  
SOUTHEAST WATER TREATMENT PLANT  
**WASHWATER ELEVATED STORAGE TANK AND PIPE SUPPORT PLAN**

Project No.: 200-11740-10003  
Designed By: JLB  
Drawn By: BRF  
Checked By: CDC

**S-7102**

Bar Measures 1 Inch

Copyright Tetra Tech