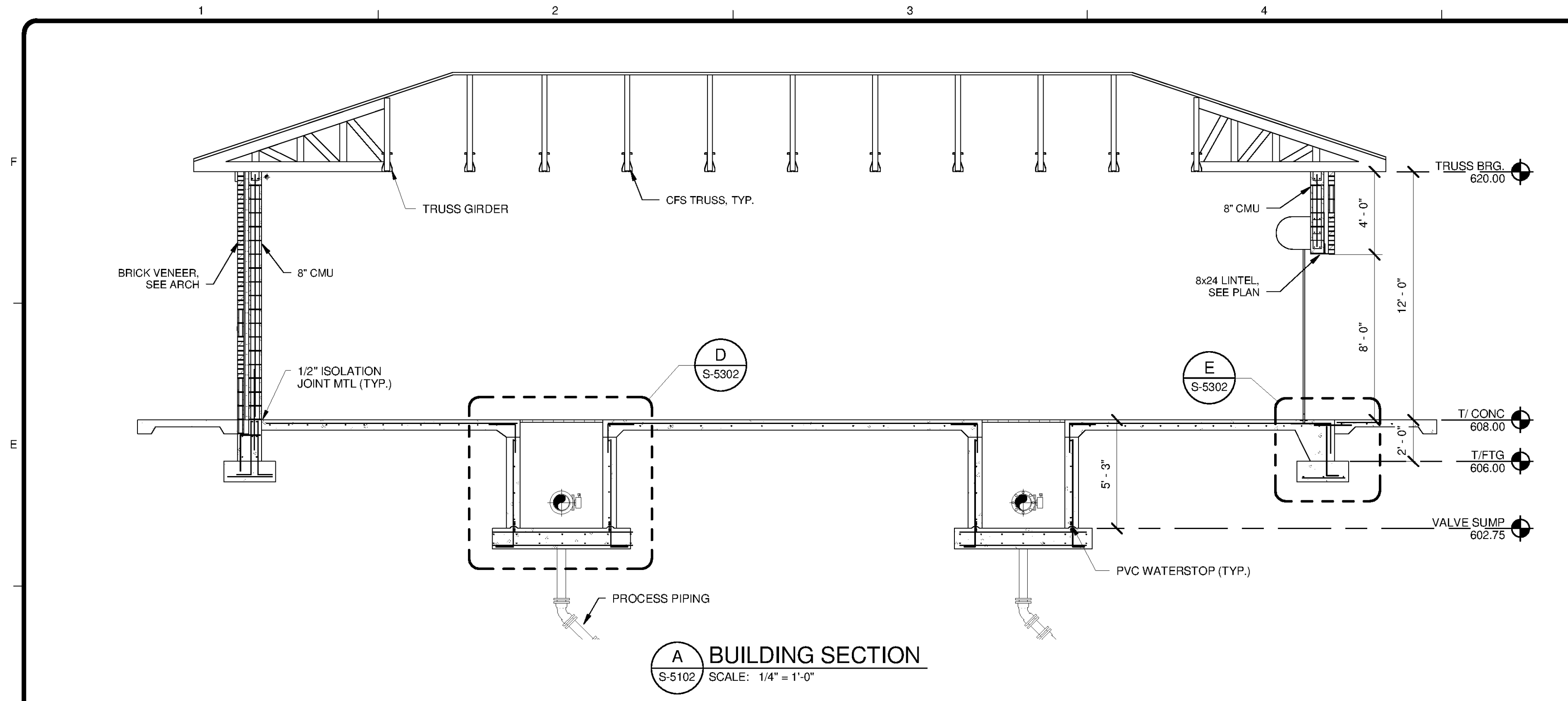
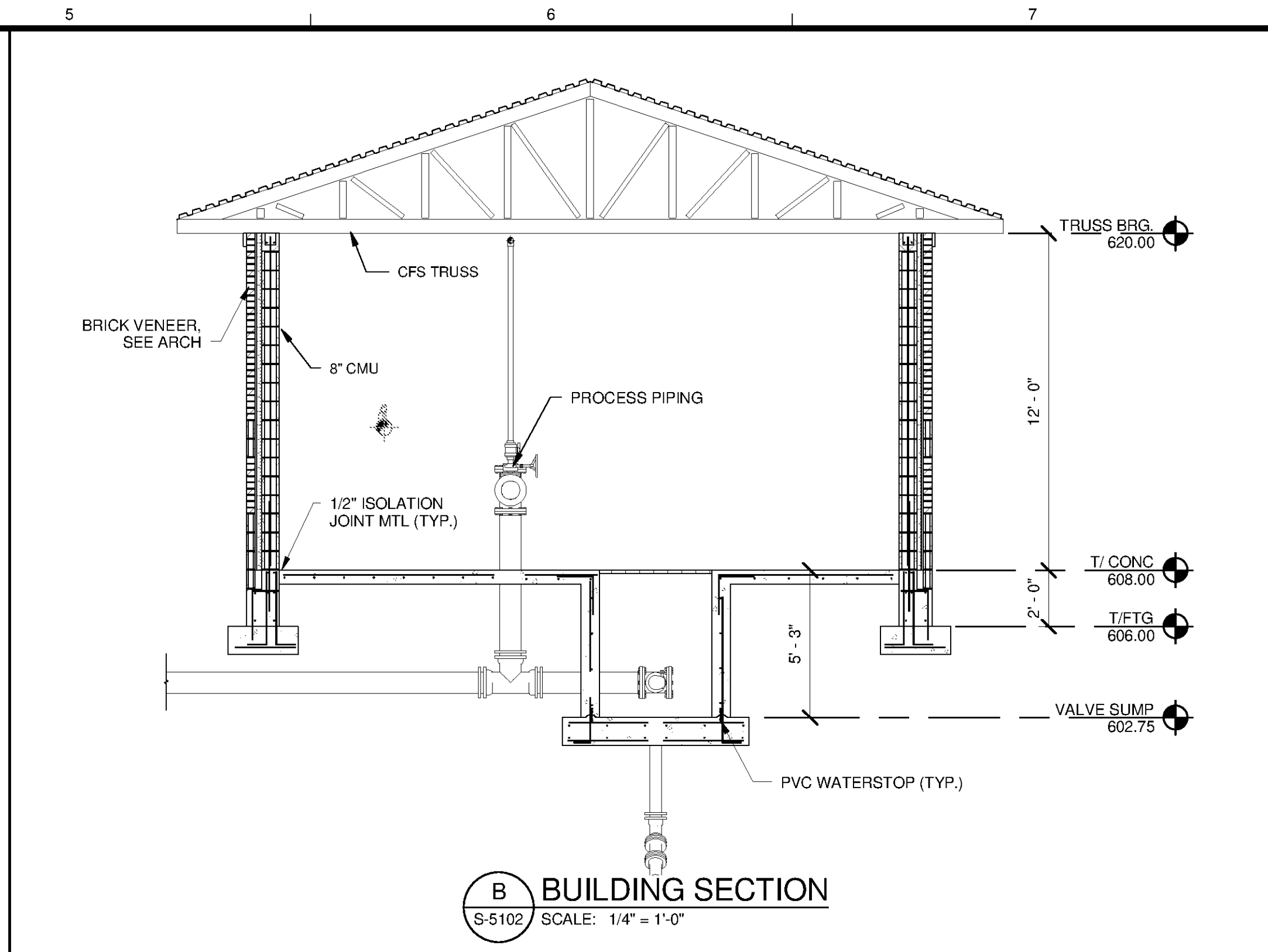


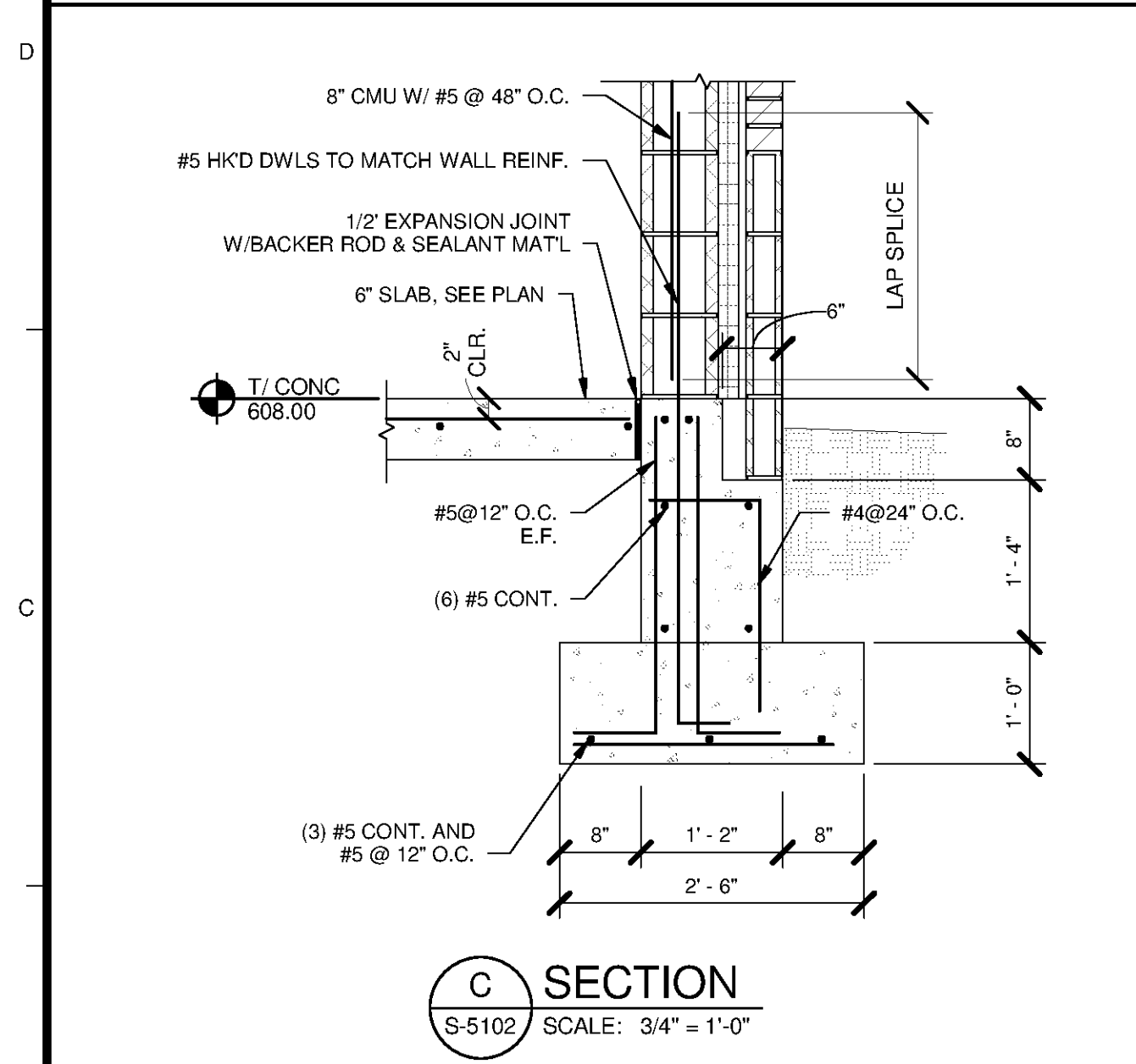
9/30/2014 4:38:38 PM C:\Users\brent.fox\Documents\WTP-11740-S-THCKPS_brent.fox.rvt



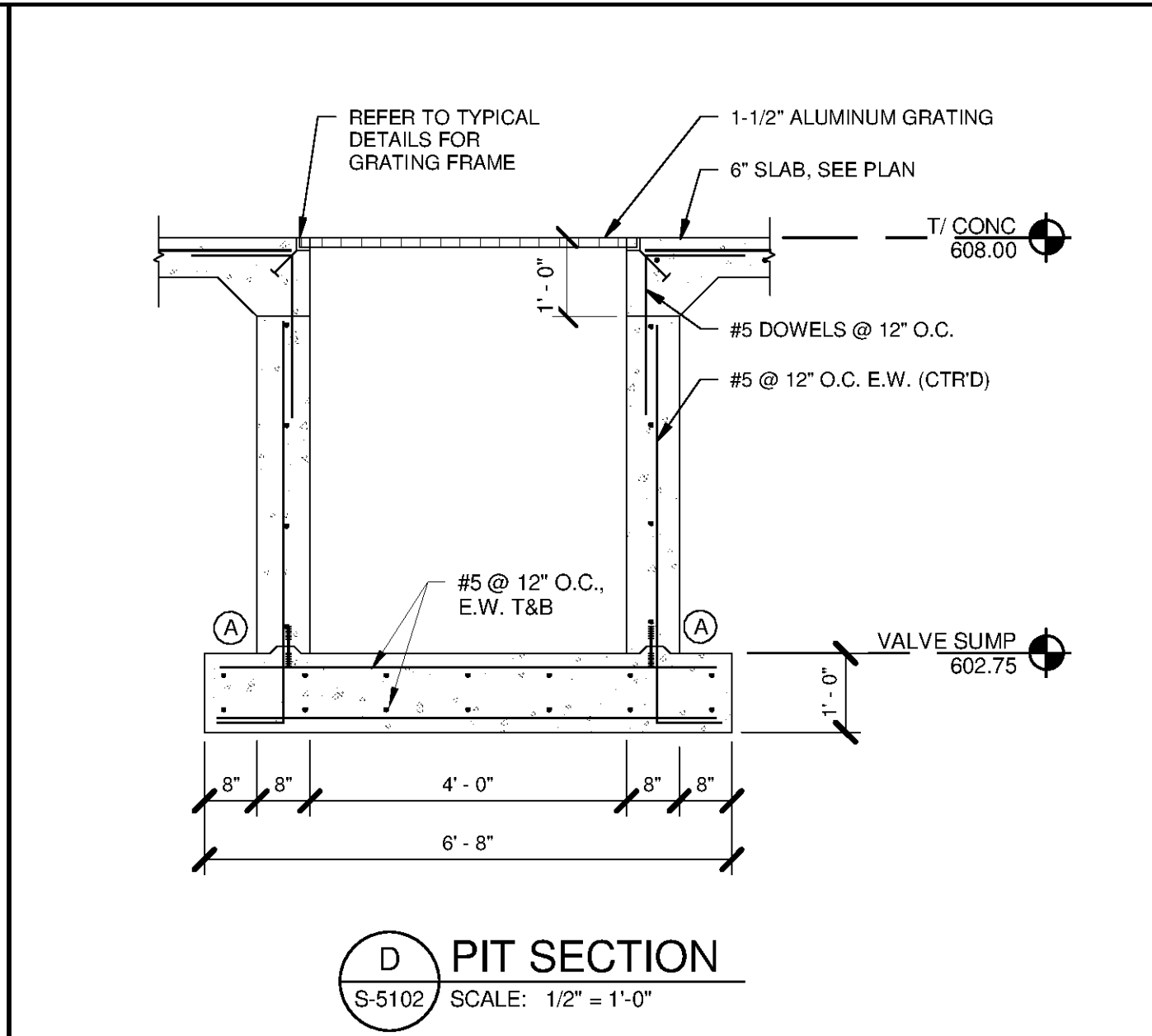
A BUILDING SECTION
S-5102 SCALE: 1/4" = 1'-0"



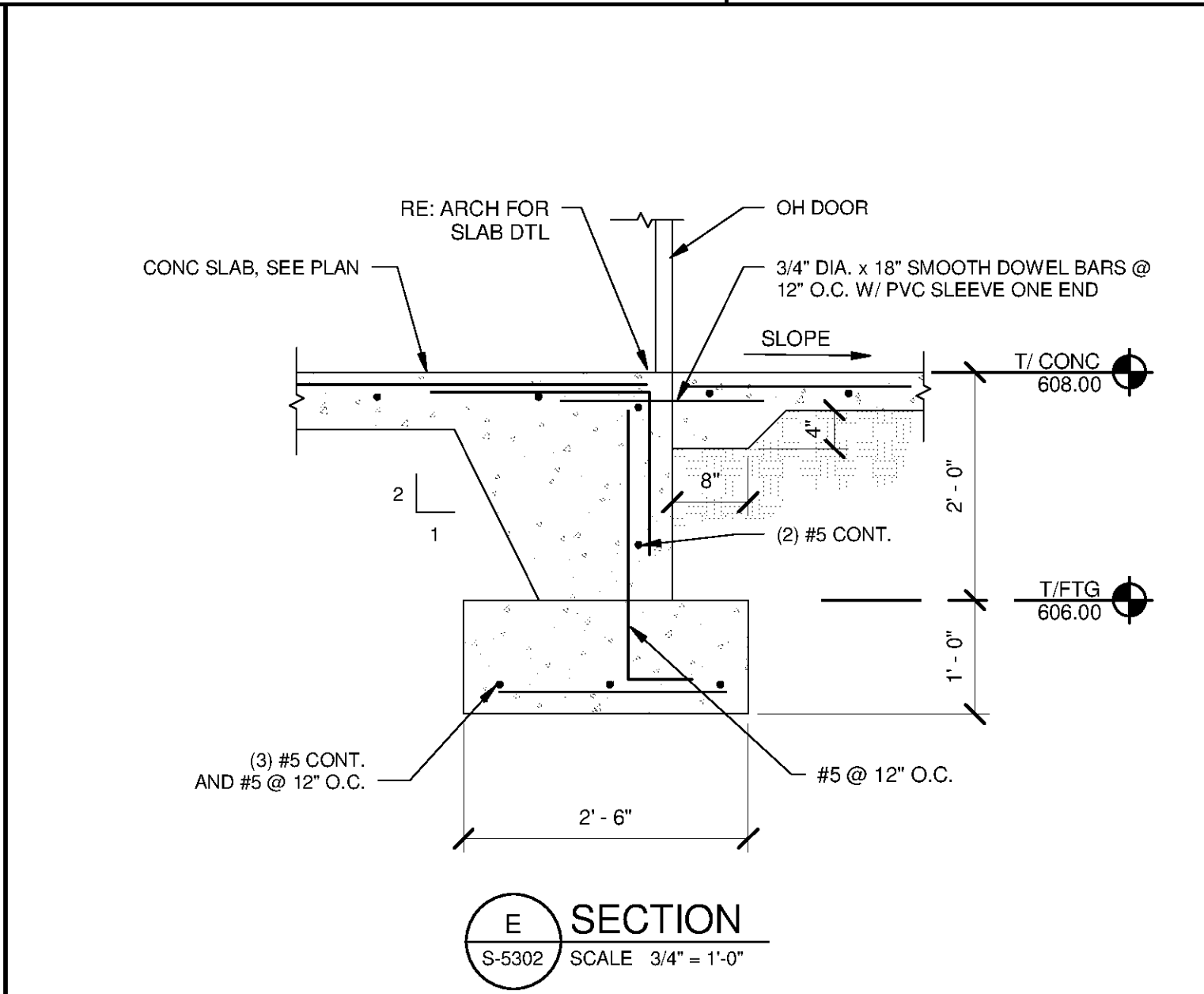
B BUILDING SECTION
S-5102 SCALE: 1/4" = 1'-0"



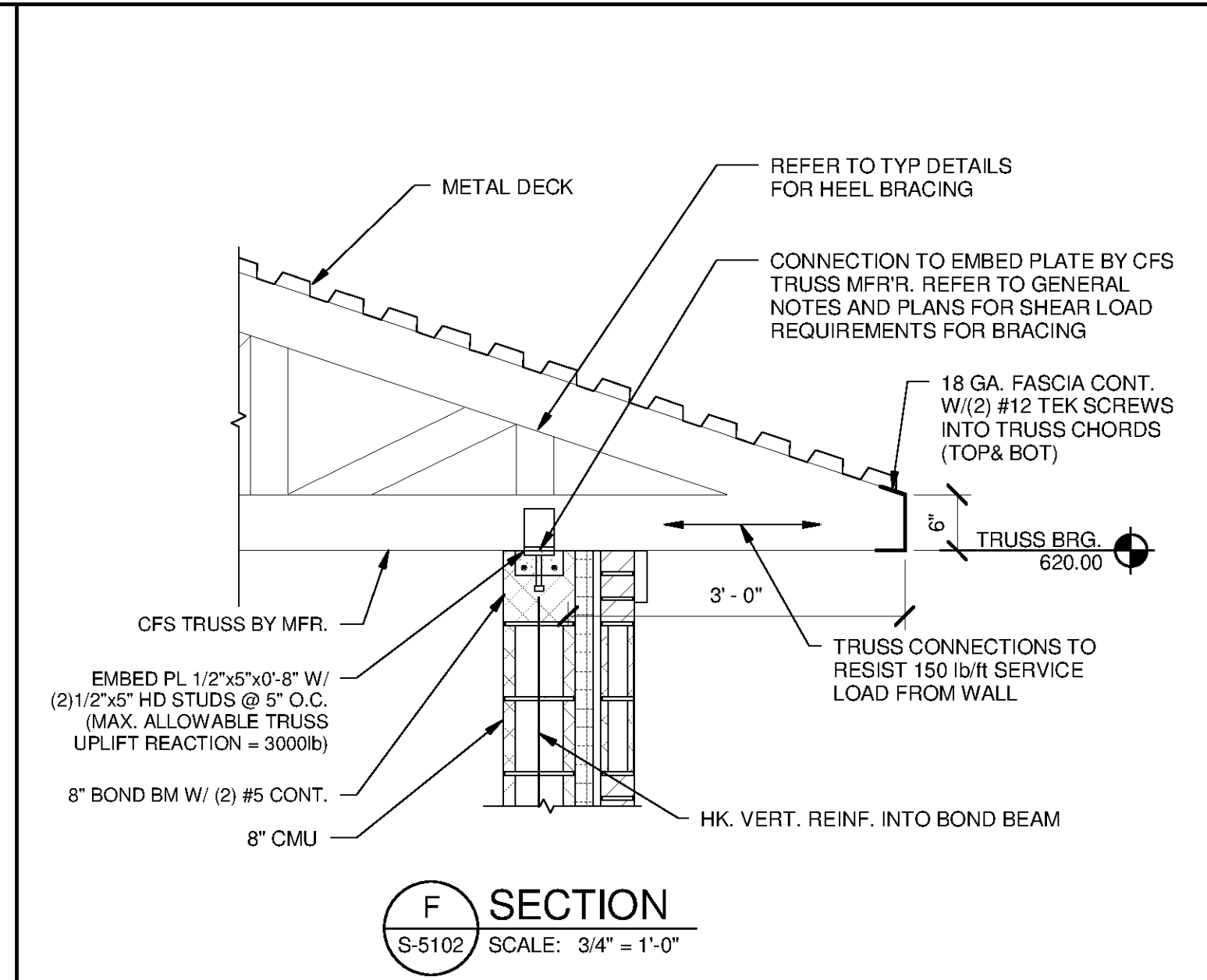
C SECTION
S-5102 SCALE: 3/4" = 1'-0"



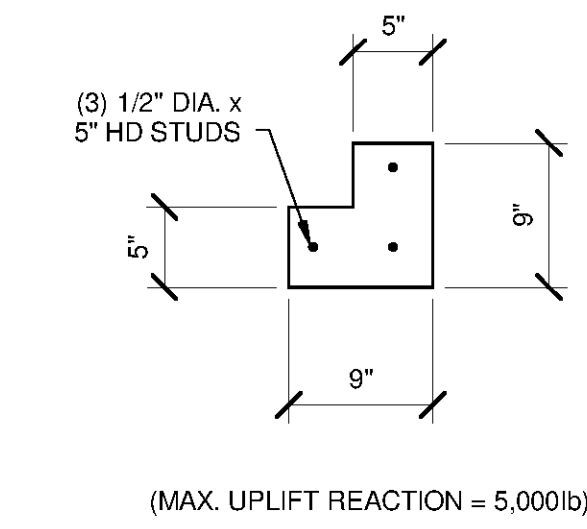
D PIT SECTION
S-5102 SCALE: 1/2" = 1'-0"



E SECTION
S-5302 SCALE: 3/4" = 1'-0"



F SECTION
S-5102 SCALE: 3/4" = 1'-0"



G HIP TRUSS EMBED
S-5302 SCALE: 1" = 1'-0"

TETRA TECH

www.tetrattech.com

101 QUALITY CIRCLE, SUITE 140
HUNTSVILLE, ALABAMA 35896
PHONE: (256) 424-4077 FAX: (256) 424-4087

BID SET

ALABAMA
LICENSED PROFESSIONAL ENGINEER
No. 31132
Brent Fox
10/24/14

BY	DATE	DESCRIPTION

HUNTSVILLE UTILITIES
SOUTHEAST WATER TREATMENT PLANT

**THICKENED SLUDGE PUMP
STATION SECTIONS AND
DETAILS**

Project No.: 200-11740-10003
Designed By: JLB

Drawn By: BRF
Checked By: CDC

S-5302

Copyright: Tetra Tech
Bar Measures 1 Inch