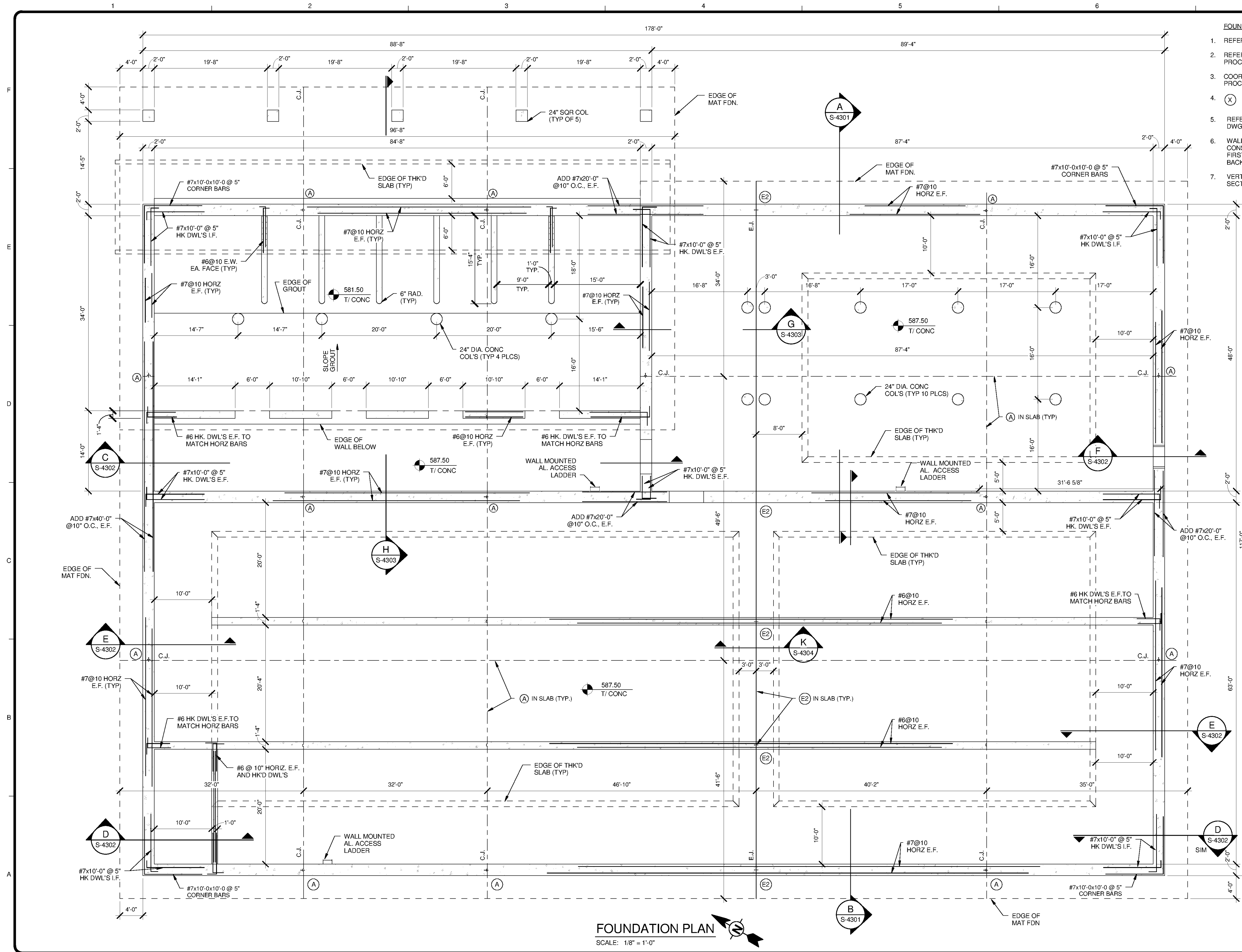


C:\Users\brent.fox\Documents\WTP-11740-S-FINWTR_brent.fox.rvt 9/30/2014 3:38:40 PM



- FOUNDATION PLAN NOTES**
- REFER TO S-001 THRU S-003 FOR GEN NOTES
 - REFER TO G-0003 FOR OVERALL SITE KEY PLAN AND PROCESS AREA LOCATIONS
 - COORD. ALL WALL PENETRATIONS AND OPNG'S W/ PROCESS DWG'S PRIOR TO CONSTRUCTION
 - (X) INDICATES WATERTIGHT CONST. JT. TYPE RE: TYP. DETAILS
 - REFER TO GEOTECH REPORT AND PROCESS DWG'S FOR UNDERDRAIN INSTALLATION
 - WALLS MAY BE BACKFILLED PRIOR TO CONSTRUCTION OF TOP SLAB. IF LEAK TESTED FIRST. REFER TO SPECIFICATION 31 23 23 FOR BACKFILL REQ'T'S
 - VERT WALL REINF. NOT SHOWN FOR CLARITY. SEE SECTIONS FOR ADDITIONAL REINF.

TETRA TECH
 www.tetra-tech.com
 101 QUALITY CIRCLE, SUITE 140
 HUNTSVILLE, ALABAMA 35896
 PHONE: (256) 424-4077 FAX: (256) 424-4087

BID SET
 ALABAMA PROFESSIONAL ENGINEER
 No. 35103-E
 BRENT FOX
 10/24/14

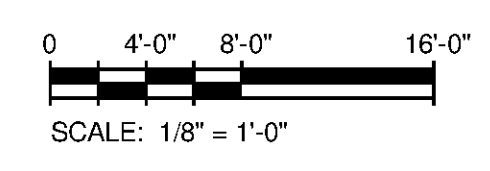
MARK	DATE	DESCRIPTION	BY

HUNTSVILLE UTILITIES
 SOUTHEAST WATER TREATMENT PLANT
**DISINFECTION & FINISHED
 WATER STORAGE BASIN
 FOUNDATION PLAN**

Project No.: 200-1170-10003
 Designed By: JLB
 Drawn By: BRF
 Checked By: CDC

S-4102

FOUNDATION PLAN
 SCALE: 1/8" = 1'-0"



Bar Measures 1 Inch