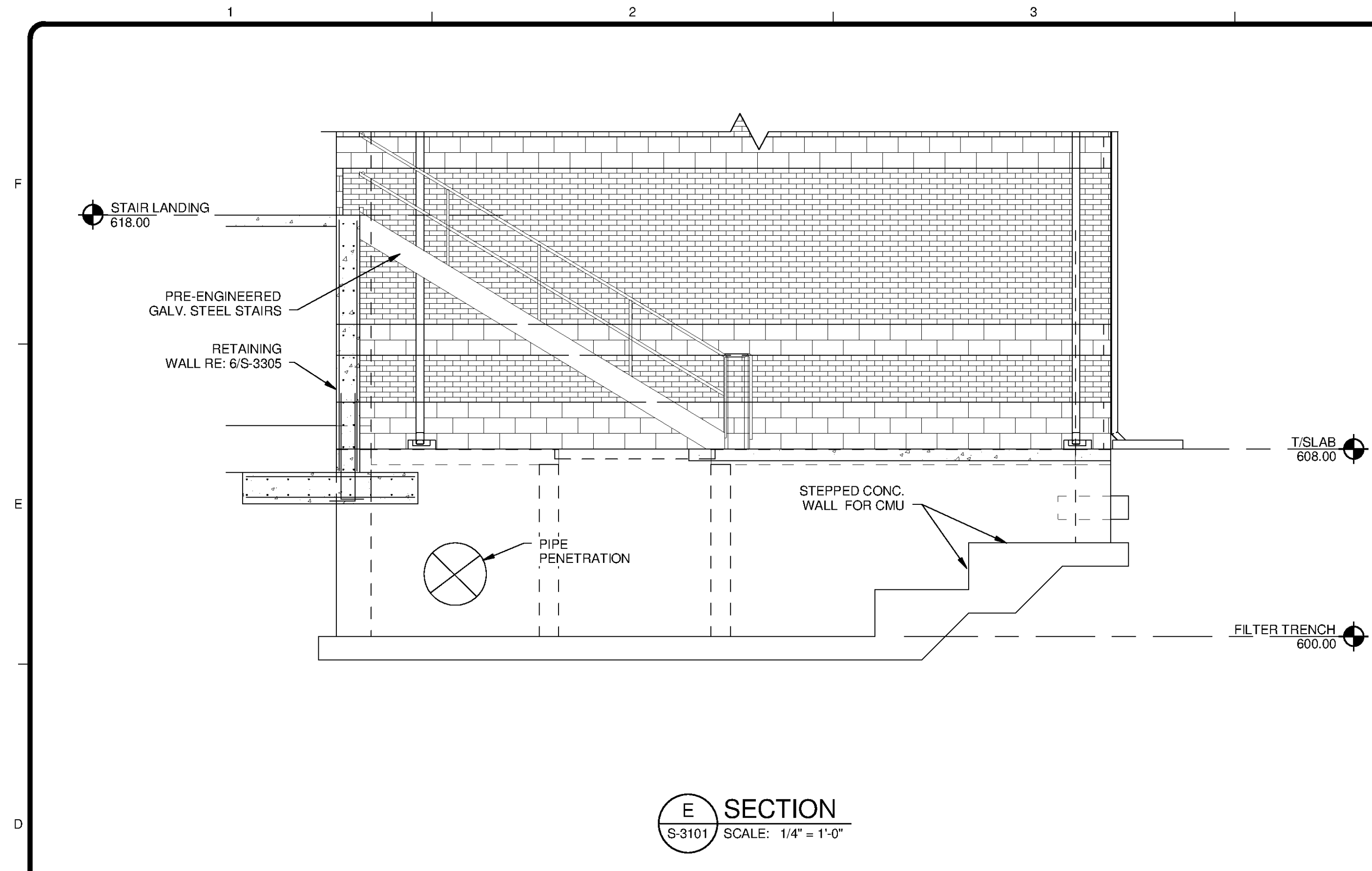
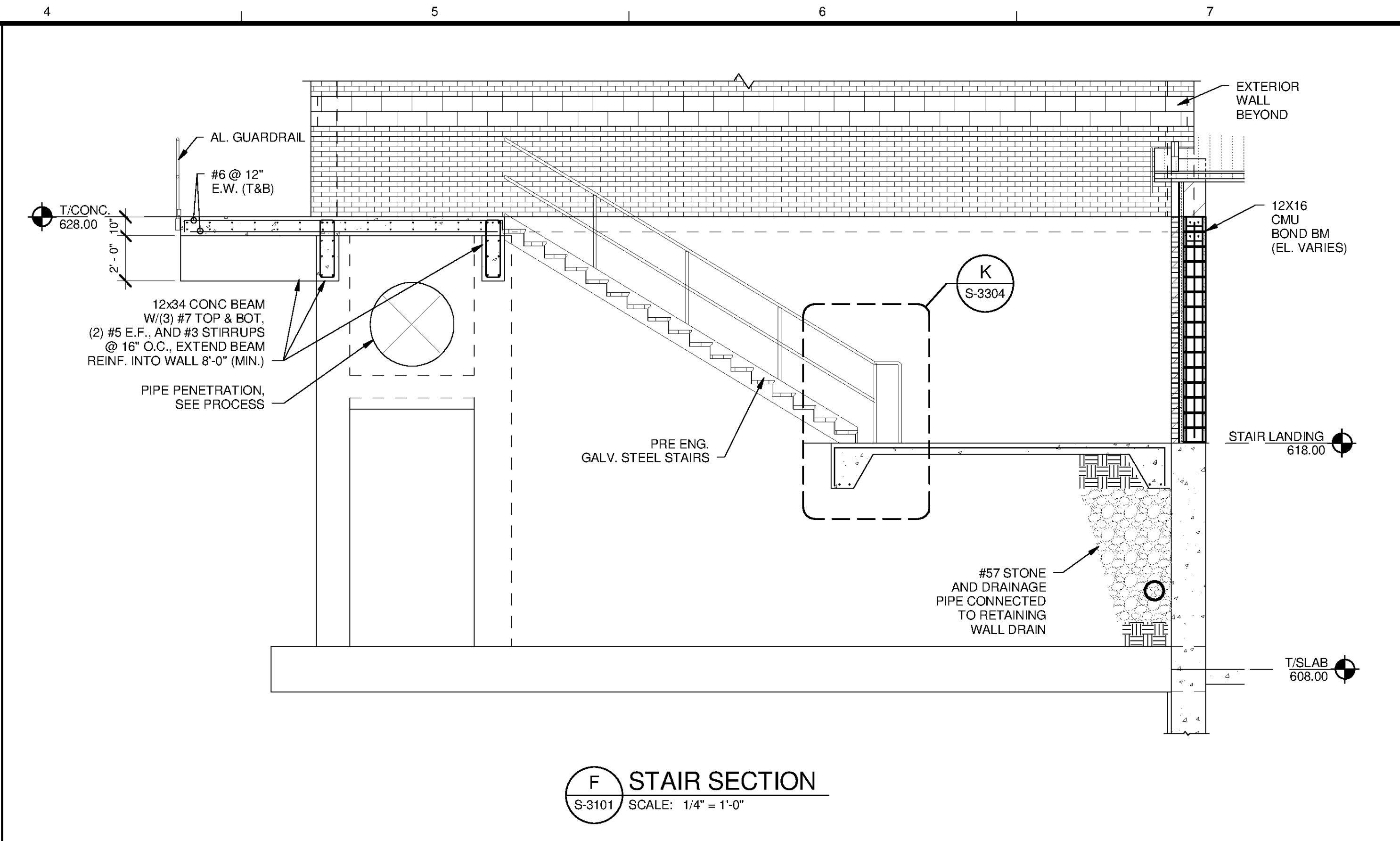


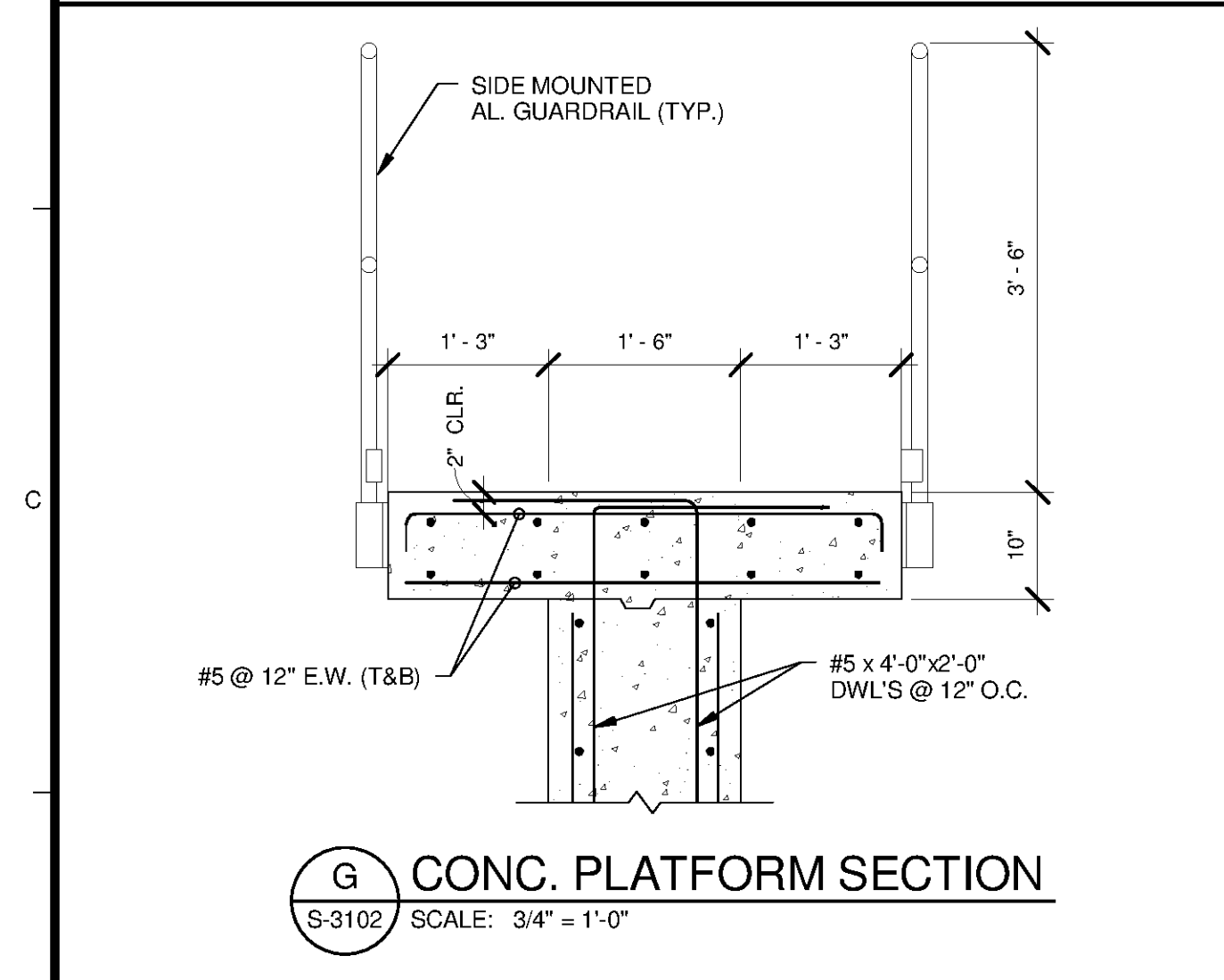
10/1/2014 4:20:23 PM C:\Users\brent.fox\Documents\WTP-11740-S-GACBAC\_brent.fox.rvt



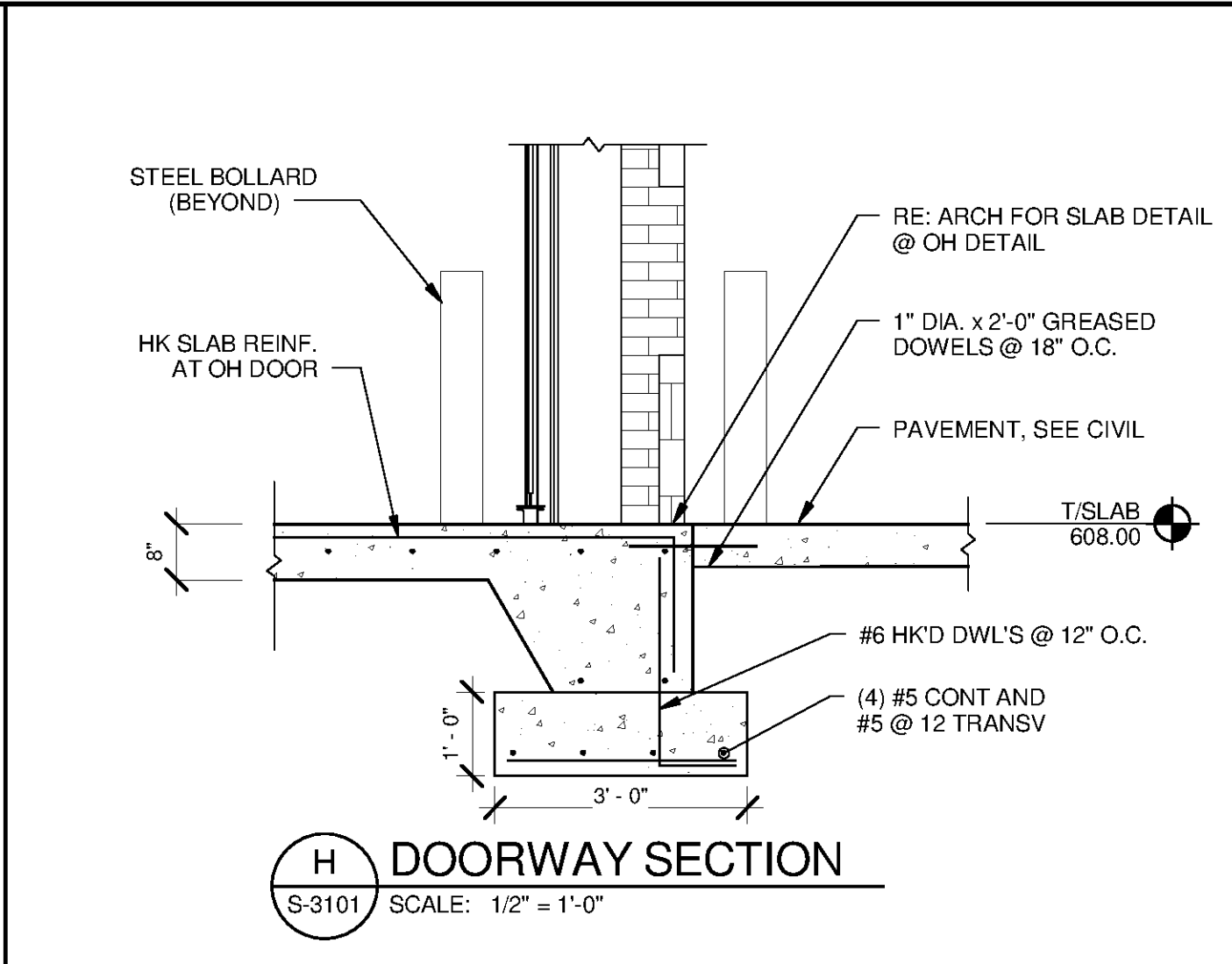
**E SECTION**  
S-3101 SCALE: 1/4" = 1'-0"



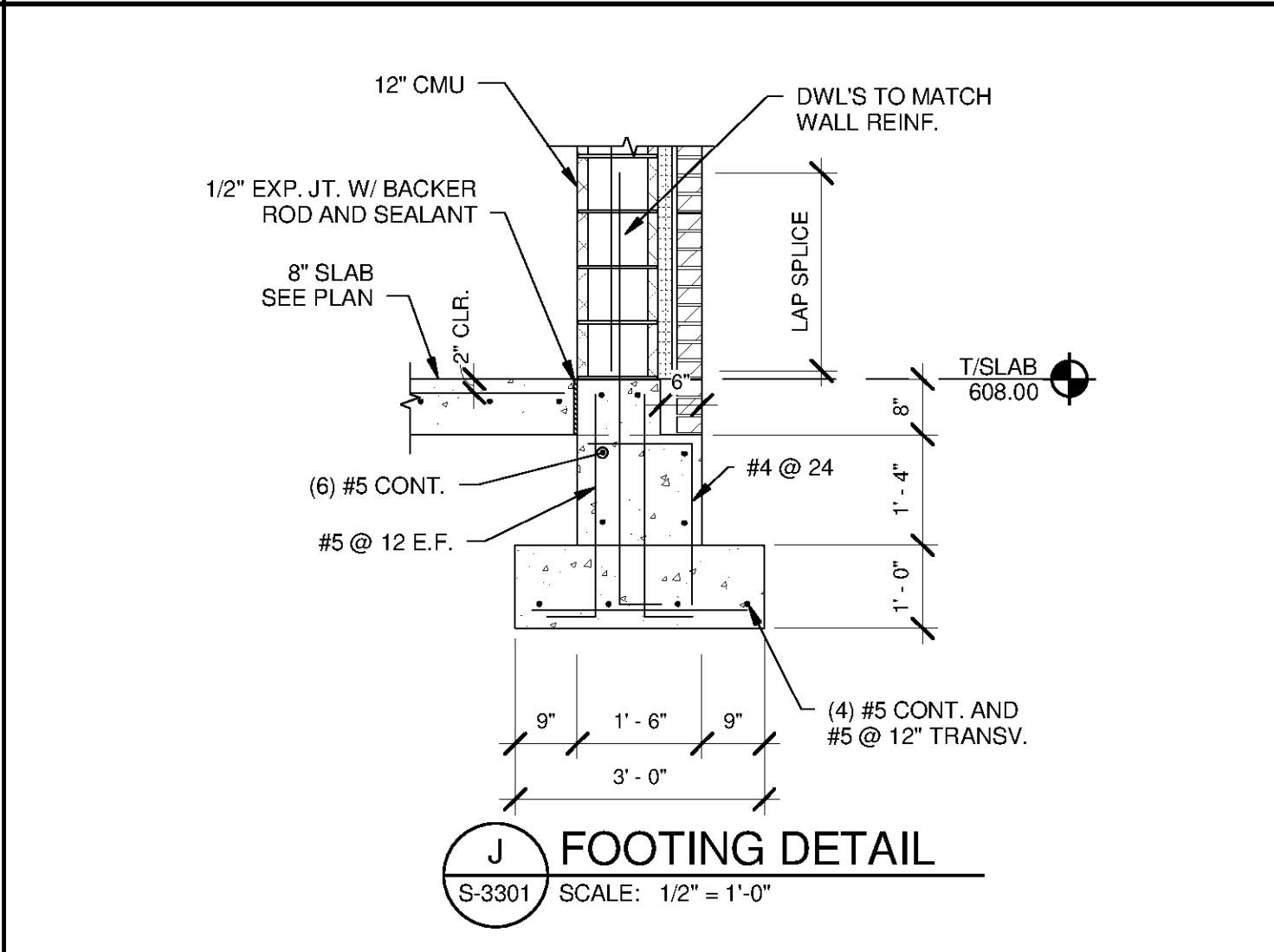
**F STAIR SECTION**  
S-3101 SCALE: 1/4" = 1'-0"



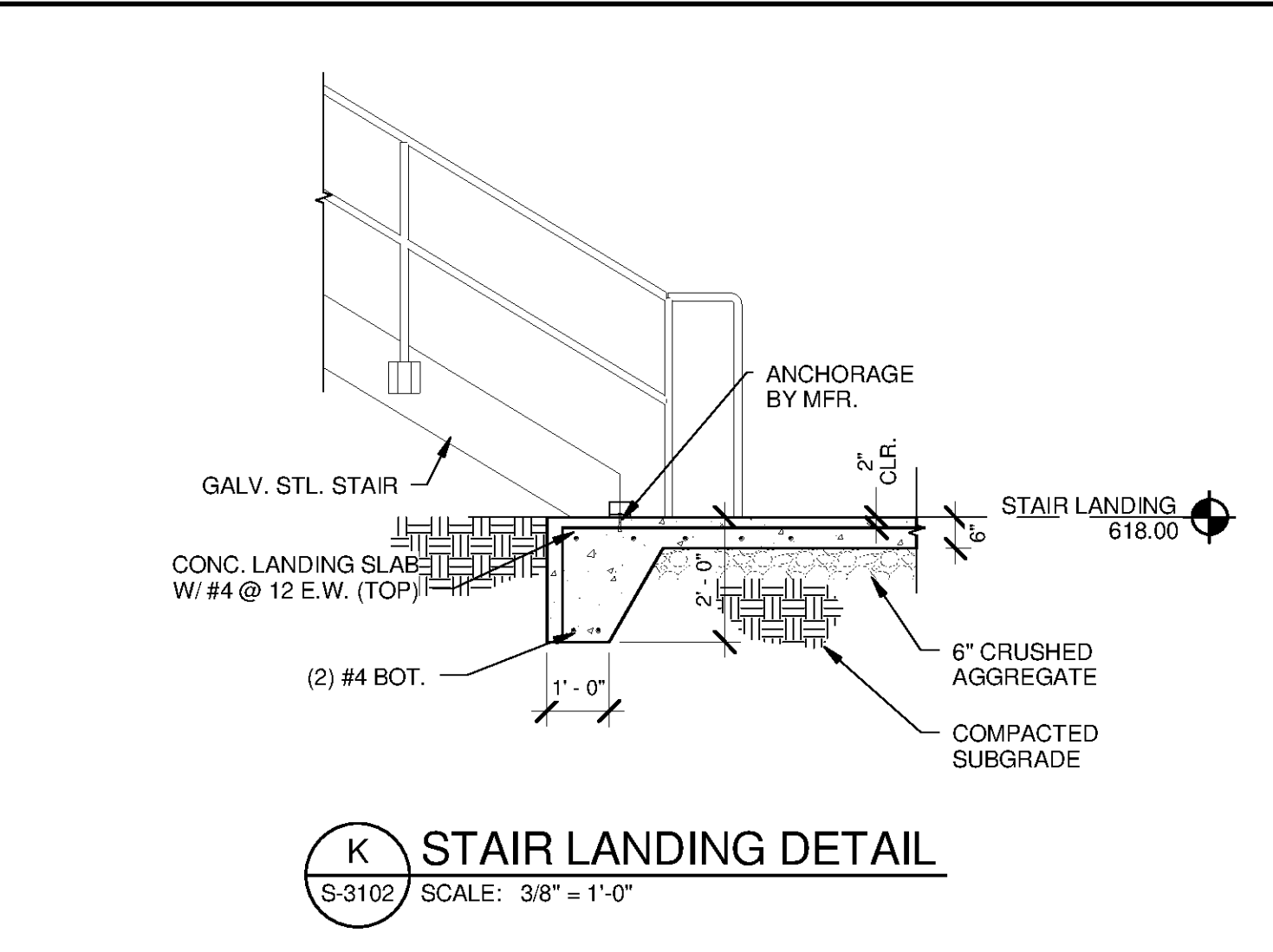
**G CONC. PLATFORM SECTION**  
S-3102 SCALE: 3/4" = 1'-0"



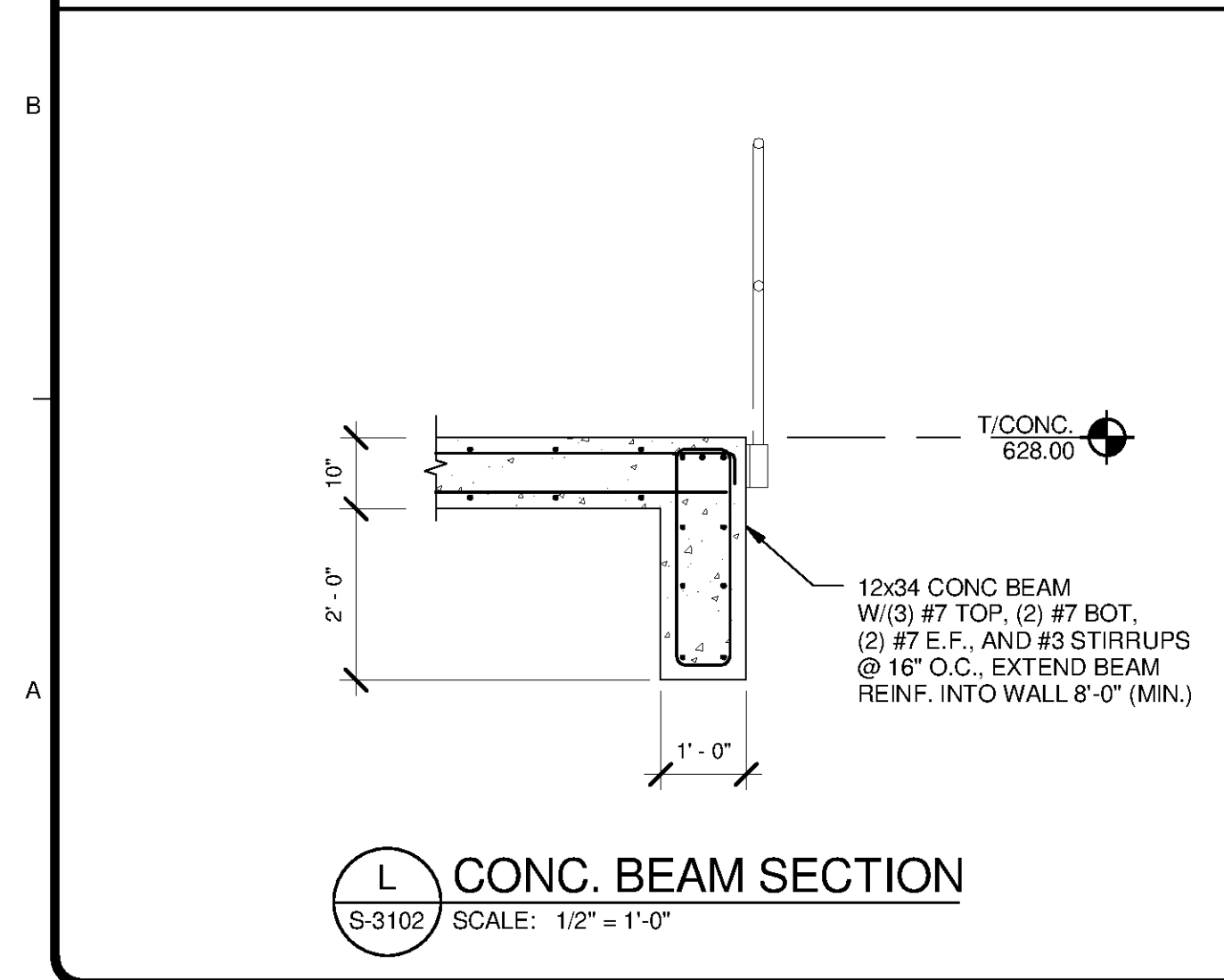
**H DOORWAY SECTION**  
S-3101 SCALE: 1/2" = 1'-0"



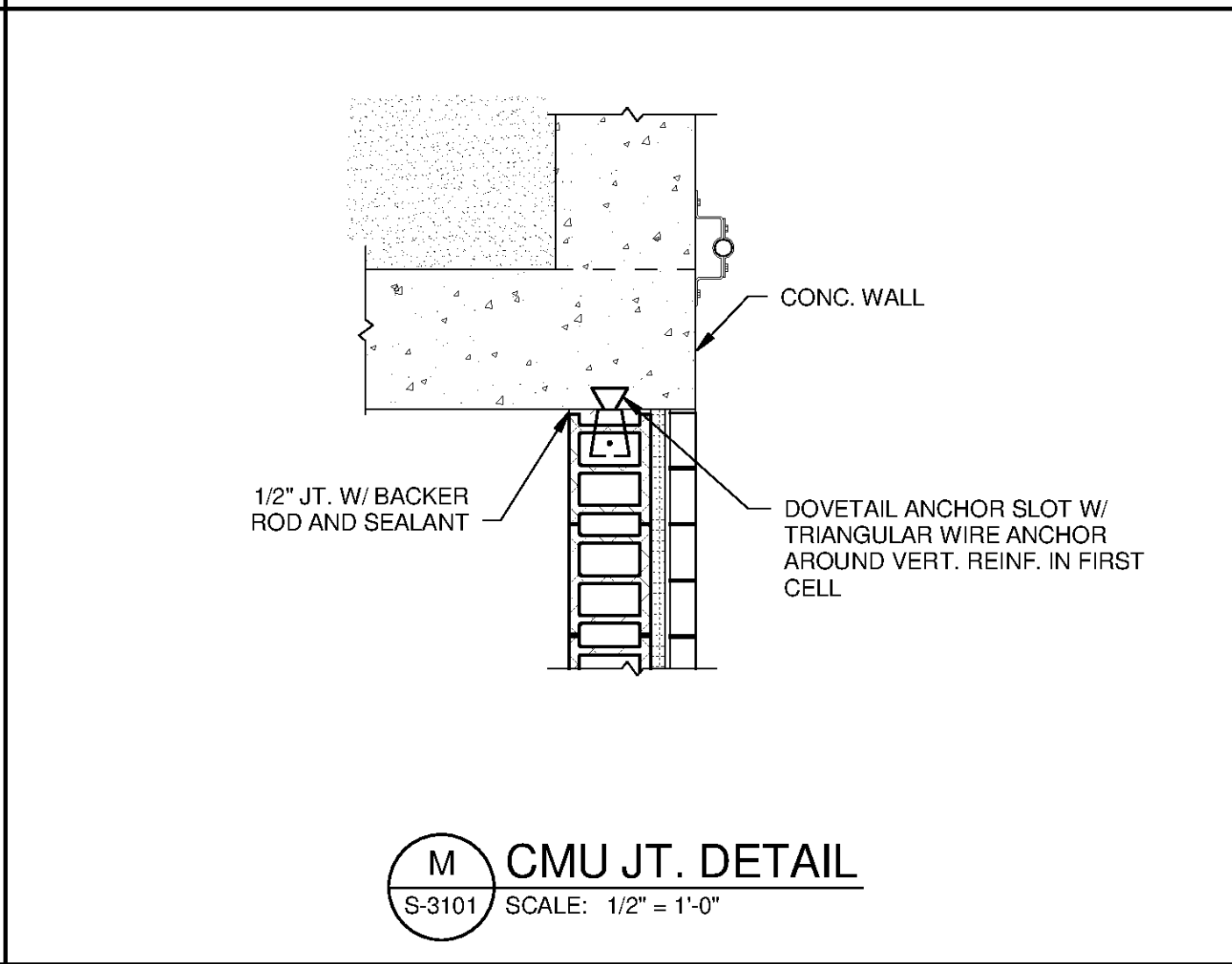
**J FOOTING DETAIL**  
S-3301 SCALE: 1/2" = 1'-0"



**K STAIR LANDING DETAIL**  
S-3102 SCALE: 3/8" = 1'-0"



**L CONC. BEAM SECTION**  
S-3102 SCALE: 1/2" = 1'-0"



**M CMU JT. DETAIL**  
S-3101 SCALE: 1/2" = 1'-0"

**TETRA TECH**  
www.tetra-tech.com  
101 QUALITY CIRCLE, SUITE 140  
HUNTSVILLE, ALABAMA 35806  
PHONE: (256) 424-4077 FAX: (256) 424-4087

**BID SET**  
ALABAMA PROFESSIONAL ENGINEER  
No. 32103-E  
BRENT FOX  
10/20/14

MARK	DATE	DESCRIPTION	BY

HUNTSVILLE UTILITIES  
SOUTHEAST WATER TREATMENT PLANT  
**GAC/BAC FILTERS & PIPE GALLERY SECTIONS AND DETAILS**

Project No.: 200-11740-10003  
Designed By: JLB  
Drawn By: BRF  
Checked By: CDC

**S-3304**

Bar Measures 1 Inch

Copyright Tetra Tech