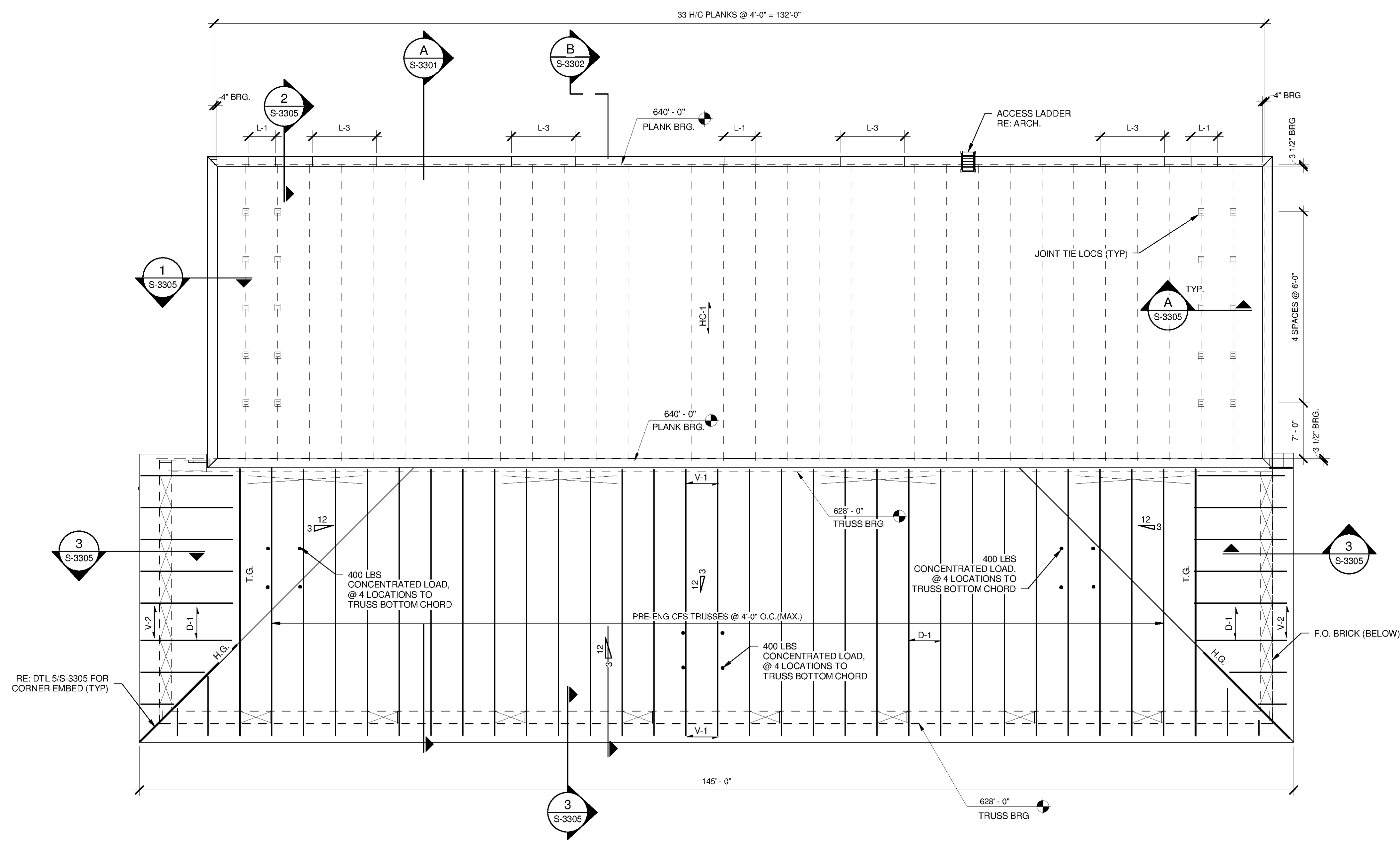


10/1/2014 4:20:14 PM C:\Users\brnt\Documents\WTP-11740-S-GACBAC_brent\fox.rvt

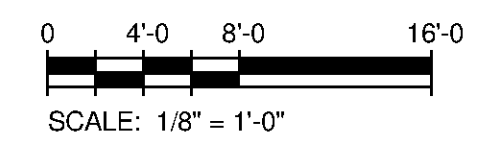
1 2 3 4 5 6 7

F
E
D
C
B
A

- ROOF PLAN NOTES:**
- REFER TO S-0001 THRU S-0003 FOR GENERAL NOTES.
 - REFER TO G-0003 FOR OVERALL SITE PLAN KEY AND PROCESS AREA LOCATIONS
 - ROOF DECK ATTACHMENT HAS BEEN DESIGNED FOR 20 GA. (MIN.) TRUSS TOP CHORD
- LEGEND:**
- D-1 DENOTES SPAN DIRECTION OF 1 1/2" x 20 GA. TYPE 'B' (F_y=33) STEEL ROOF DECK. ROOF DECK IS A DIAPHRAGM. ATTACH TO SUPPORTING STEEL W/ #12 TEK SCREWS IN A 36/9 PATTERN AND 4" O.C. AT RIDGES, HIPPS AND LONGITUDINAL SUPPORTS. SIDELAP FASTENERS #10 TEK SCREWS @ 8" O.C.
 - HC-1 INDICATES SPAN DIRECTION OF 12" x 4'-0" WIDE PRECAST HOLLOWCORE PLANKS W/ GROUTED KEYWAYS
 - X DENOTES TRUSS HEEL BRACING PROVIDED BY TRUSS MFR. TO RESIST DIAPHRAGM SHEAR
 - V-1 INDICATES 100 lb/ft SERVICE SHEAR LOAD TO BE RESISTED BY TRUSS HEEL BRACING
 - V-2 INDICATES 650 lb/ft SERVICE SHEAR LOAD TO BE RESISTED BY TRUSS HEEL BRACING
 - T.G. - INDICATES TRUSS GIRDER
 - H.G. - INDICATES HIP TRUSS GIRDER
 - # 12 INDICATES ROOF SLOPE. COORD W/ ARCH. DWGS.
 - L-# - INDICATES CMU LINTEL. REF. TYP. DETAILS FOR SCHEDULE



LOW & HIGH ROOF FRAMING PLAN
SCALE: 1/8" = 1'-0"



TETRA TECH
www.tetra.tech.com
101 QUALITY CIRCLE, SUITE 140
HUNTSVILLE, ALABAMA 35806
PHONE: (256) 424-4077 FAX: (256) 424-4087

BID SET

BY	DATE	DESCRIPTION

MARK	DATE	DESCRIPTION

HUNTSVILLE UTILITIES
SOUTHEAST WATER TREATMENT PLANT
**GAC/BAC FILTERS & PIPE
GALLERY ROOF FRAMING
PLAN**

Project No.: 200-11740-10003
Designed By: JLB
Drawn By: BRF
Checked By: CDC

S-3103

Copyright Tetra Tech
Bar Measures 1 Inch