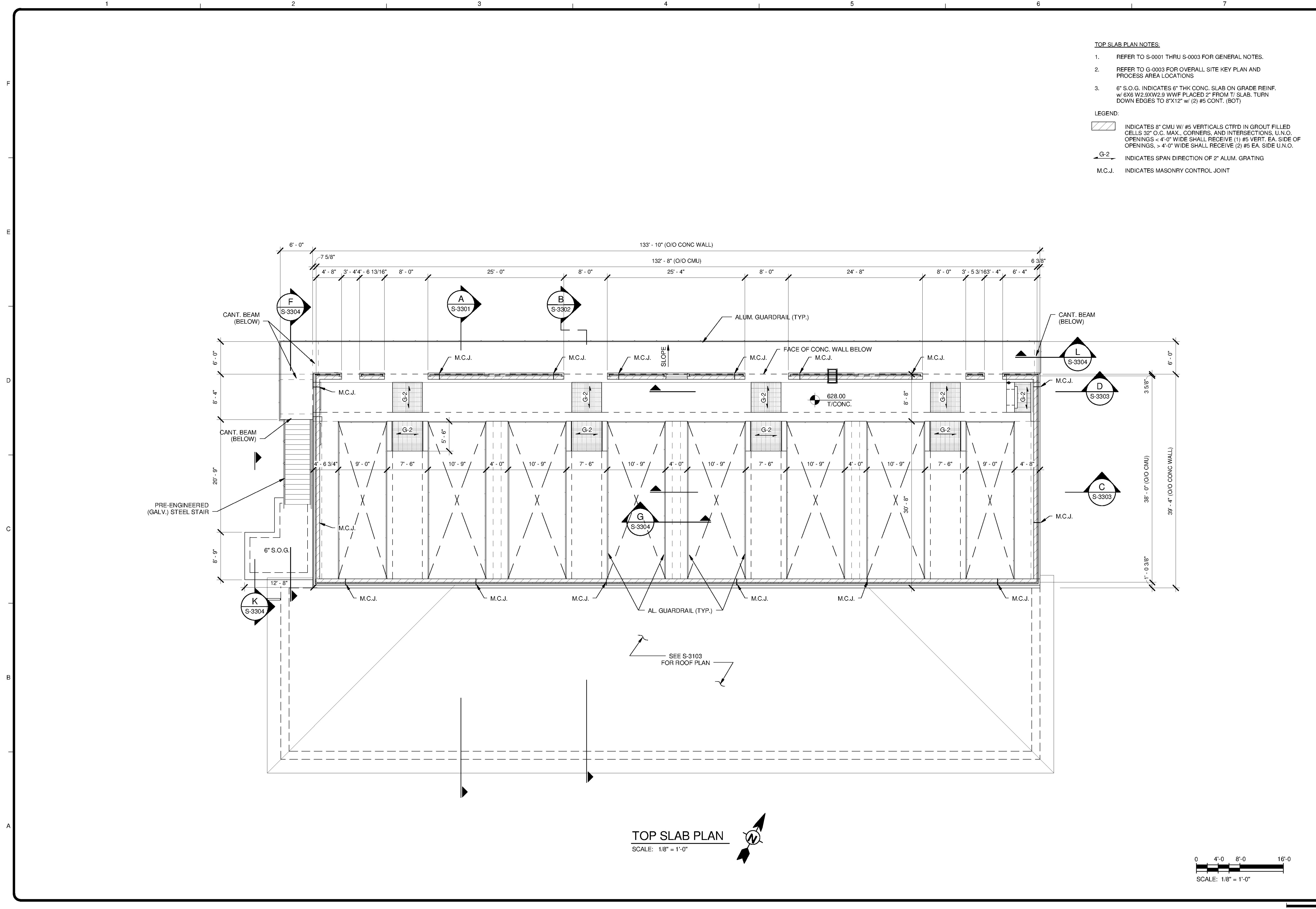


10/1/2014 4:20:13 PM C:\Users\brent.fox\Documents\WTF-11740-S-GACBAC_brent.fox.rvt



- TOP SLAB PLAN NOTES:**
- REFER TO S-0001 THRU S-0003 FOR GENERAL NOTES.
 - REFER TO G-0003 FOR OVERALL SITE KEY PLAN AND PROCESS AREA LOCATIONS
 - 6" S.O.G. INDICATES 6" THK CONC. SLAB ON GRADE REINF. w/ 6X6 W2.9XW2.9 WWF PLACED 2" FROM T/ SLAB. TURN DOWN EDGES TO 8"X12" w/ (2) #5 CONT. (BOT)
- LEGEND:**
- [Hatched Box] INDICATES 8" CMU W/ #5 VERTICALS CTR'D IN GROUT FILLED CELLS 32" O.C. MAX. CORNERS, AND INTERSECTIONS. U.N.O. OPENINGS < 4'-0" WIDE SHALL RECEIVE (1) #5 VERT. EA. SIDE OF OPENINGS. > 4'-0" WIDE SHALL RECEIVE (2) #5 EA. SIDE U.N.O.
 - [Arrow with G-2] INDICATES SPAN DIRECTION OF 2" ALUM. GRATING
 - [Dashed Line] M.C.J. INDICATES MASONRY CONTROL JOINT

TETRA TECH

www.tetra.tech.com

101 QUALITY CIRCLE, SUITE 140
HUNTSVILLE, ALABAMA 35806
PHONE: (256) 424-4077 FAX: (256) 424-4087

BID SET

ALABAMA
LICENSED PROFESSIONAL ENGINEER
No. 31132
Brent Fox
10/24/14

MARK	DATE	DESCRIPTION	BY

HUNTSVILLE UTILITIES
SOUTHEAST WATER TREATMENT PLANT
GAC/BAC FILTERS & PIPE
GALLERY TOP SLAB PLAN

Project No.: 200-11740-10003
Designed By: JLB
Drawn By: BRF
Checked By: CDC

S-3102

Copyright: Tetra Tech
Bar Measures 1 Inch

TOP SLAB PLAN
SCALE: 1/8" = 1'-0"

