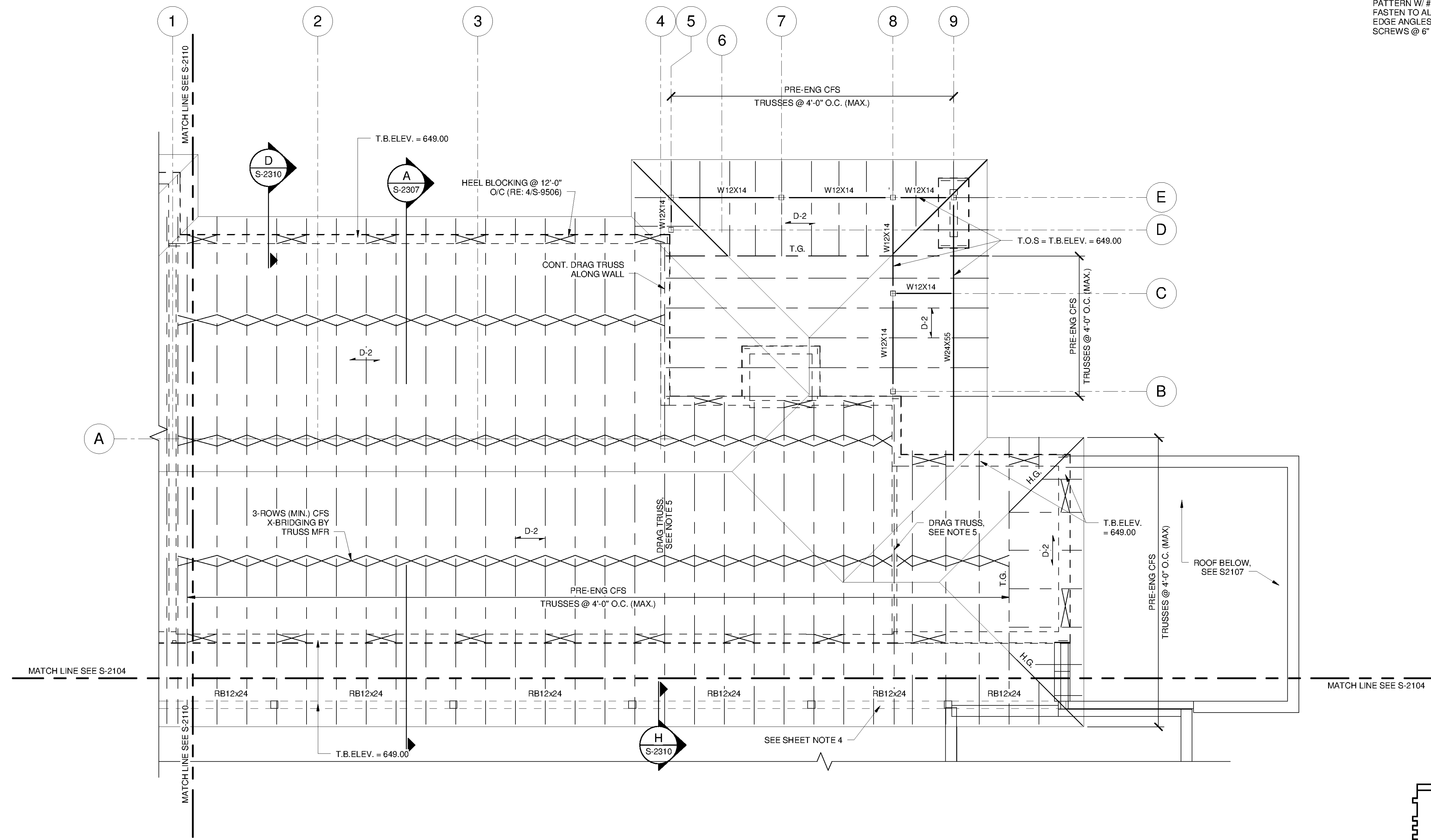
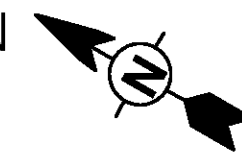


10/1/2014 3:20:18 PM C:\Revit Local\WTP-11740-S-MANPP\Justin.Greenwell.rvt



**OPERATIONS BLDG. ROOF PLAN**

SCALE: 1/8" = 1'-0"



**ROOF PLAN NOTES:**

- S-0001 THRU S-0003 FOR GENERAL NOTES.
- REFER TO G-0003 FOR OVERALL SITE KEY PLAN AND PROCESS AREA LOCATIONS
- TRUSS BEARING ELEVATION = 649.00 U.N.O.  
TOP OF STEEL ELEVATION = 649.00 U.N.O.
- RB12x24 DENOTES CONCRETE BEAM 12" WIDE x 24" DEEP. REINFORCE W/ (3) #6 TOP & BOTTOM CONTINUOUS. REFER TO 4/S-9504 FOR DETAILS.
- TRUSS MANUFACTURER SHALL DESIGN DRAG TRUSS FOR (-) 100 PLF TOP CHORD AXIAL WIND (SERVICE) LOAD TO BE DISTRIBUTED TO THE SUPPORTING WALL.

**LEGEND:**

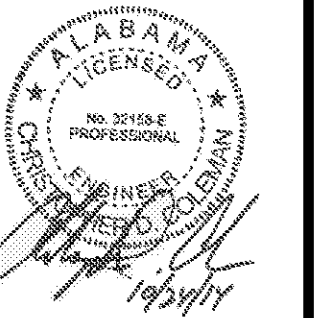
- D-2** → SPAN DIRECTION 1 1/2"x20GA. TYPE B (Fy=33 KSI) ROOF DECK. FASTEN W/ #12 SCREWS @ 36/7 PATTERN W/ #10 SIDELAP FASTENERS @ 12" O.C. FASTEN TO ALL DRAG TRUSSES HIPS, RIDGES, EDGE ANGLES & OPENING EDGES W/ #12 SCREWS @ 6" O.C..

**TETRA TECH**



www.tetrattech.com  
101 QUALITY CIRCLE, SUITE 140  
HUNTSVILLE, ALABAMA 35896  
PHONE: (256) 424-4077 FAX: (256) 424-4087

**BID SET**



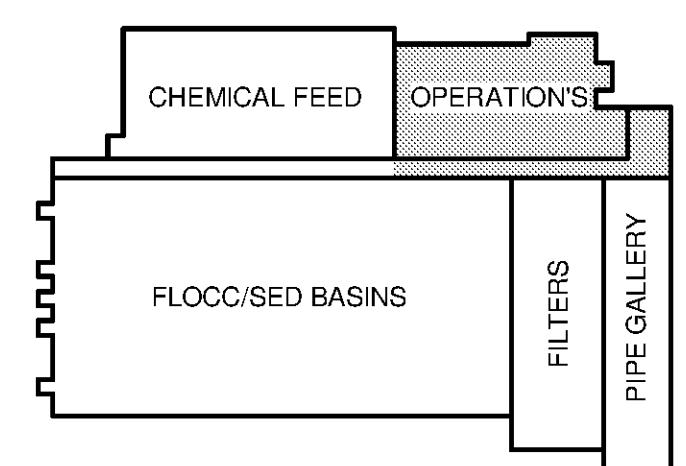
MARK	DATE	DESCRIPTION	BY

HUNTSVILLE UTILITIES  
SOUTHEAST WATER TREATMENT PLANT  
**MAIN PROCESS BUILDING  
OPERATIONS ROOF  
FRAMING PLAN**

Project No.: 200-11740-10003  
Designed By: JLB  
Drawn By: BRF  
Checked By: CDC

**S-2108**

Copyright: Tetra Tech  
Bar Measures 1 Inch



**KEY PLAN**

