




10/1/2014 3:20:17 PM C:\Revit Local\WTP-11740-S-MANPP\Justin.Green\wtp1.rvt

- FLOOR FRAMING PLAN NOTES:**
- REFER TO S-0001 AND S-0003 FOR GENERAL NOTES.
 - TOP OF CONC FLOOR = 639.00 U.N.O.
 - TOP OF STEEL ELEVATION = 638.67 U.N.O.
 - ADD #4x8'-0" CRACK BARS (TOP) @ 12" O.C. CTRD ON GIRDERS
 - 2-TON HOIST, SEE SPECIFICATIONS AND D / S-2311
 - LX - INDICATED MASONRY LINTEL. REFER TO SCHEDULE 5/S9505
 - FB12x24 - DENOTES CONCRETE FLOOR BEAM 12" WIDE x 24" DEEP. REINFORCE W/ (2) #8 TOP & BOTTOM CONTINUOUS W/ #3 (T2) TIES @ 10" O.C. REFER TO 4/S-9504 FOR DETAILS.

- LEGEND**
- DENOTES SPAN DIRECTION OF 2VL18 COMPOSITE METAL DECK FILLED W/ NORMAL-WEIGHT (4,000 PSIC) CONCRETE FOR TOTAL THICKNESS EQUAL TO 5" (l=3'). FASTEN DECK W/ 5/8" PUDDLE WELDS @ 36/4 PATTERN W/ #10 WELDED SIDELAP FASTENERS @ 12" O.C.. REINFORCE DECK W/ WWF 4x4-W2.9xW2.9. PLACE 1" FROM THE TOP OF SLAB.
 - SPAN DIRECTION 1 1/2"x20GA. TYPE B ROOF DECK. FASTEN W/ 5/8" DIA. PUDDLE WELDS IN 36/4 PATTERN W/ #10 SIDELAP FASTENERS @ 12" O.C..
 - DENOTES MOMENT CONNECTION FOR CONTINUOUS BEAM FRAMING WHERE INDICATED.
-  8" CMU
 12" CMU
 12" CMU SOUND BLOCK

TETRA TECH

www.tetrattech.com

101 QUALITY CIRCLE, SUITE 140
HUNTSVILLE, ALABAMA 35896
PHONE: (256) 424-4077 FAX: (256) 424-4087

BID SET

ALABAMA PROFESSIONAL ENGINEER

NO. 25103-E
J. L. BRYAN
10/24/14

MARK	DATE	DESCRIPTION	BY

MARK	DATE	DESCRIPTION	BY

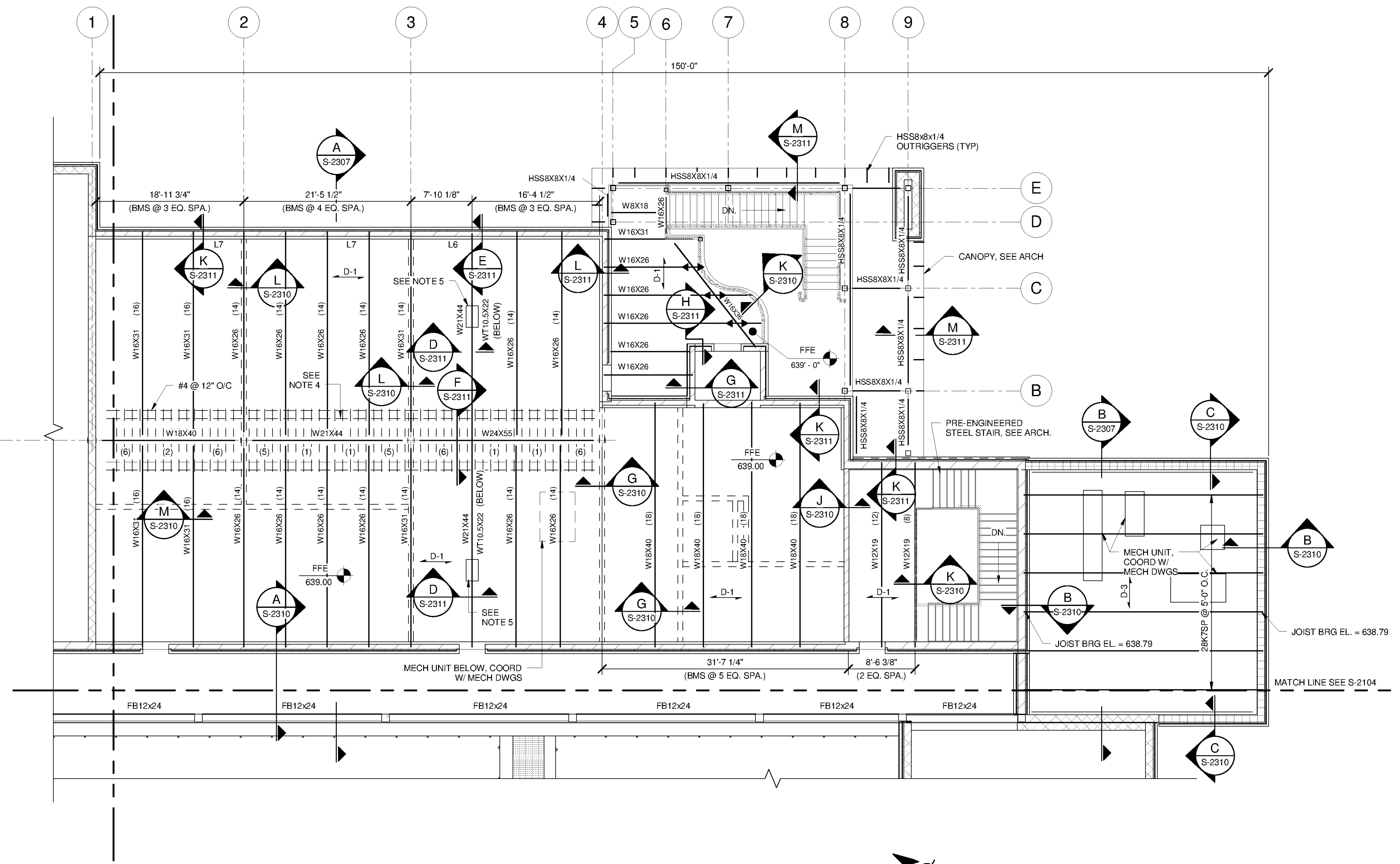
HUNTSVILLE UTILITIES
SOUTHEAST WATER TREATMENT PLANT

**MAIN PROCESS BUILDING
OPERATIONS SECOND
FLOOR FRAMING PLAN**

Project No.: 200-11740-10003
Designed By: JLB
Drawn By: BRF
Checked By: CDC

S-2107

Copyright: Tetra Tech
Bar Measures 1 Inch



OPERATIONS BLDG. SECOND FLOOR FRAMING PLAN
SCALE: 1/8" = 1'-0"

