

10/1/2014 3:20:15 PM C:\Revit Local\WTP-11740-S-MANPP\Justin.Greenwell.rvt

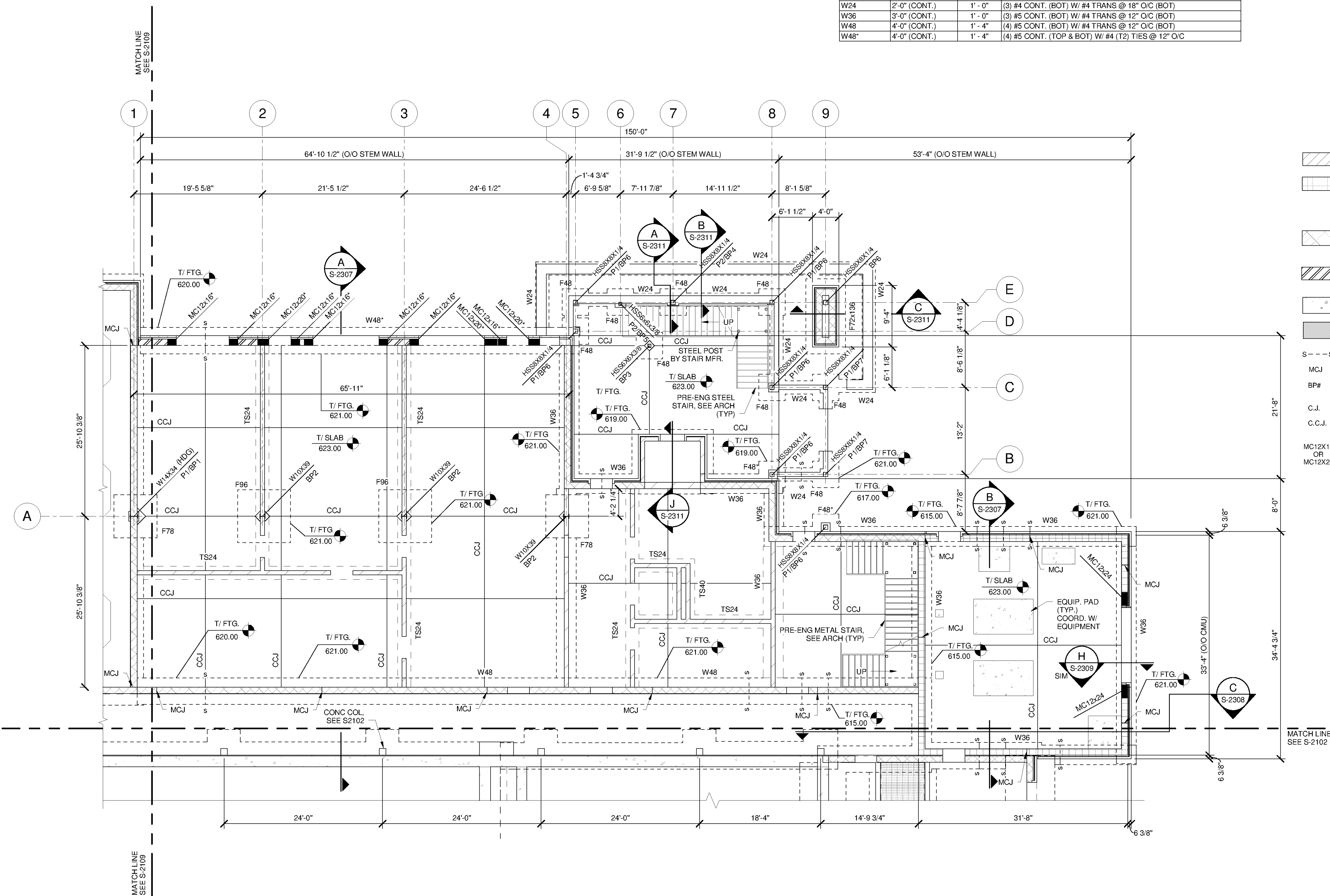
STRUCTURAL FOUNDATION SCHEDULE			
MARK	SIZE	THICK	REINFORCEMENT
F48	4'-0" x 4'-0"	1'-0"	(4) #5 E.W. (BOT)
F48*	4'-0" x 4'-0"	1'-2"	(5) #5 E.W. (BOT)
F72x136	6'-0" x 11'-4"	1'-2"	#6 @ 12" E.W. (BOT)
F78	6'-6" x 6'-6"	1'-2"	(6) #6 E.W. (BOT)
F96	8'-0" x 8'-0"	1'-4"	(8) #6 E.W. (BOT)
W24	2'-0" (CONT.)	1'-0"	(3) #4 CONT. (BOT) W/ #4 TRANS @ 18" O/C (BOT)
W36	3'-0" (CONT.)	1'-0"	(3) #5 CONT. (BOT) W/ #4 TRANS @ 12" O/C (BOT)
W48	4'-0" (CONT.)	1'-4"	(4) #5 CONT. (BOT) W/ #4 TRANS @ 12" O/C (BOT)
W48*	4'-0" (CONT.)	1'-4"	(4) #5 CONT. (TOP & BOT) W/ #4 (T2) TIES @ 12" O/C

**FOUNDATION PLAN NOTES:**

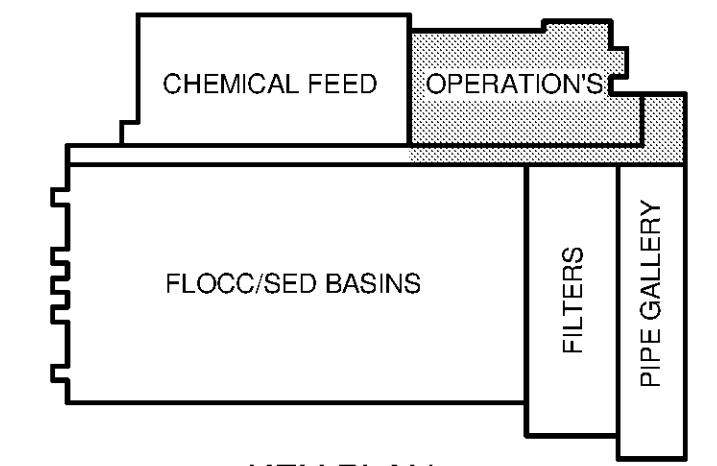
- REFER TO S-0001 THRU S-0003 FOR GENERAL NOTES.
- REFER TO G-0003 FOR OVERALL SITE KEY PLAN AND PROCESS AREA LOCATIONS
- ALL SLAB ON GRADE SHALL CONFORM TO AN 8" THICK SLAB, REINFORCED W/ #5 @ 12" O/C EACH WAY (PLACED 2" FROM TOP) OVER A 10MIL VAPOR BARRIER & 6" CRUSHED STONE, U.N.O.
- TOP OF FOUNDATION ELEVATIONS SHALL BE (-2'-0") AFF. U.N.O.
- FOUNDATIONS FOR CHEM FEED/OPERATIONS ARE BASED ON AN ALLOWABLE BEARING PRESSURE OF 3000 PSF.
- REFER TO ARCHITECTURAL DRAWINGS FOR MASONRY WALL LAYOUT
- PROVIDE TPER WATERSTOPS FOR ALL LIQUID CONTAINING AREAS, U.N.O.

**LEGEND**

- INDICATES 8" CMU W/ #6 VERT. CTRD IN GROUT FILLED CELLS @ 32" O.C. MAX., CORNERS, AND INTERSECTIONS U.N.O.
- INDICATES 12" SOUND BLOCK (8" STRUCT, 4" ACCOUST.) W/ #6 VERT. CTRD IN GROUT FILLED CELLS @ 32" O.C. MAX., CORNERS, AND INTERSECTIONS U.N.O. OPENING < 4'-0" SHALL RECEIVE (2) # 6 EA. SIDE. OPENINGS > 4'-0" SHALL BE REINFORCED AS SHOWN ON PLANS; REFER TO S-9505 FOR DETAILS.
- INDICATES 12" CMU W/ #6 VERT. CTRD IN GROUT FILLED CELLS @ 24" O.C. MAX., CORNERS, AND INTERSECTIONS U.N.O.; OPENING < 4'-0" SHALL RECEIVE (2) # 6 EA. SIDE. REFER TO CMU DETAILS ON SHEET S-9505.
- INDICATES 12" CMU W/ #6 VERT. CTRD IN GROUT FILLED CELLS @ 8" O.C. MAX. REFER TO CMU DETAILS ON SHEET S-9505.
- EQUIPMENT PAD, REFER TO 1/S-9504 & 2/S-9504 FOR TYPICAL DETAILS.
- 12" THICK SLAB, REINFORCED W/ #4 @ 12" O/C EACH WAY (TOP & BOTTOM) OVER A 10MIL VAPOR BARRIER & 6" OF CRUSHED STONE, U.N.O.
- S --- S DENOTES STEPPED FOOTING, SEE 8/ S-9502
- MCJ INDICATES CMU CONTROL JOINT
- BP# INDICATES COLUMN BASE PLATE TYPE. REFER TO 5/S-9506 FOR DETAILS.
- C.J. INDICATES CONSTRUCTION JOINT
- C.C.J. INDICATES CRACK CONTROL JOINT. REFER TO S-9000'S FOR TYPICAL DETAILS.
- MC12X16 INDICATES MASONRY COLUMN (WIDTH BY LENGTH). REFER TO DETAIL 4/S-9505 FOR REINFORCING DETAILS.
- MC12X24 OR MC12X24 (\*) INDICATED MASONRY COLUMN SPAN FROM GROUND FLOOR TO 2ND FLOOR
- (\*\*) INDICATES CONTINUOUS MASONRY COLUMN SPAN FROM GND FLOOR TO ROOF; SPLICE VERTICAL REINFORCING AT 1/3 SPAN LOCATION ONLY.



**OPERATIONS BLDG. FOUNDATION/SLAB PLAN**  
SCALE: 1/8" = 1'-0"



**KEY PLAN**  
SCALE: 1/8" = 1'-0"

**TETRA TECH**  
www.tetrattech.com  
101 QUALITY CIRCLE, SUITE 140  
HUNTSVILLE, ALABAMA 35896  
PHONE: (256) 424-4077 FAX: (256) 424-4087

**BID SET**  
ALABAMA  
LICENSED PROFESSIONAL ENGINEER  
No. 35103-E  
Professional Seal  
Justin Greenwell  
10/24/14

MARK	DATE	DESCRIPTION	BY

HUNTSVILLE UTILITIES  
SOUTHEAST WATER TREATMENT PLANT  
**MAIN PROCESS BUILDING OPERATIONS FOUNDATION PLAN**

Project No.: 200-11740-10003  
Designed By: JLB  
Drawn By: BRF  
Checked By: CDC

**S-2106**

Copyright: Tetra Tech  
Bar Measures 1 Inch