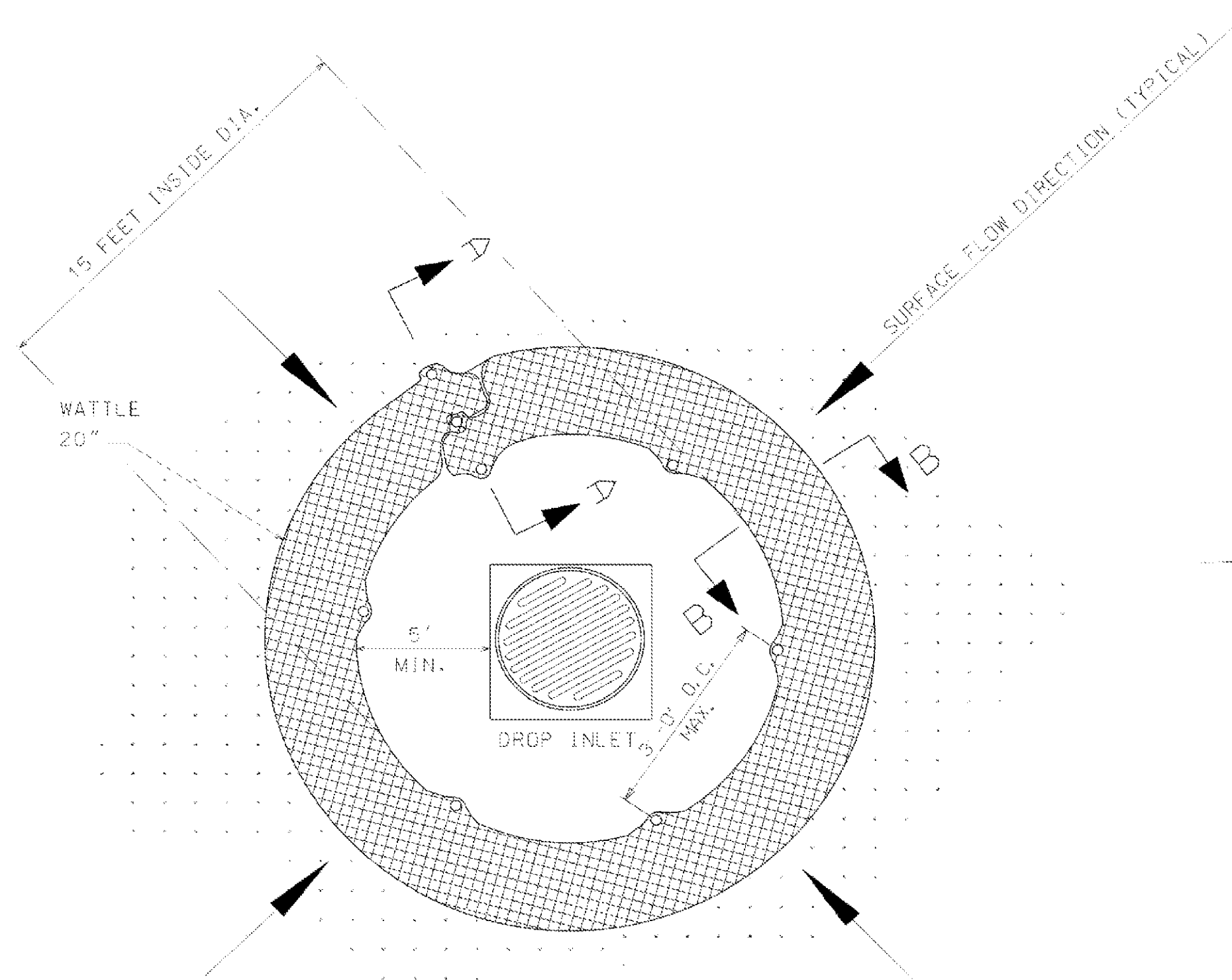
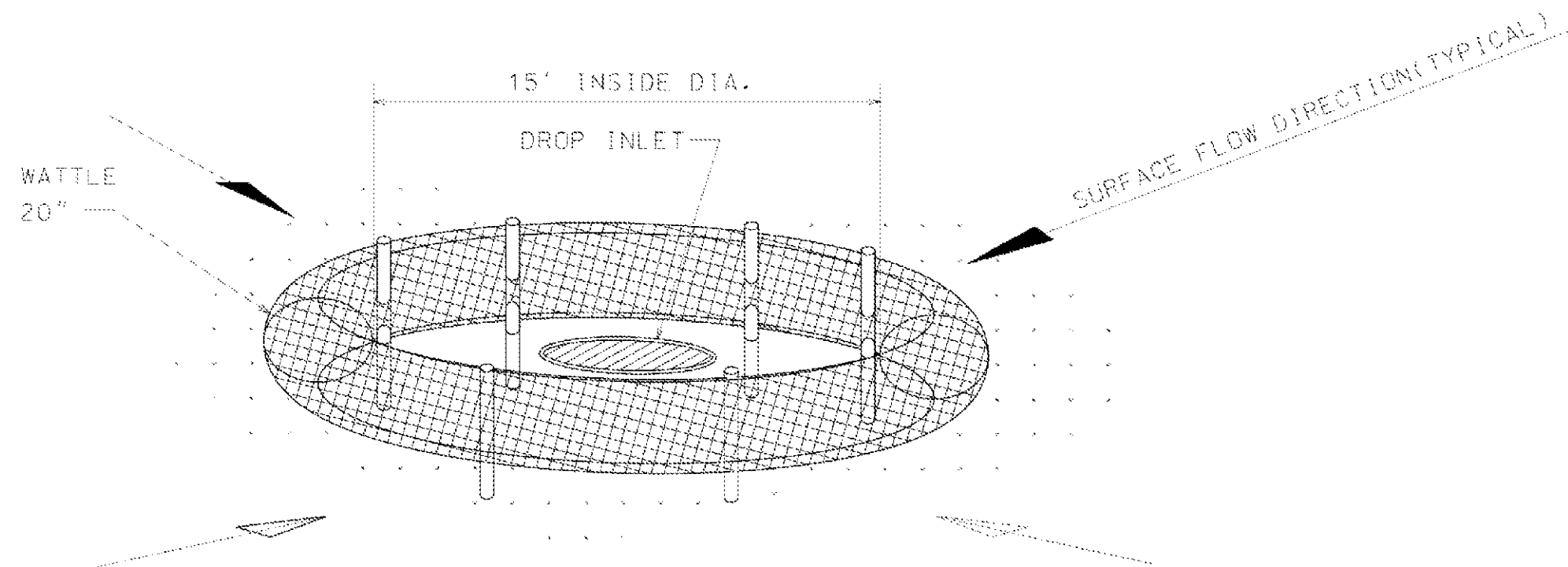


10/1/2014 3:59:19 PM - \\ERS161FS1\PROJECTS\IER11740\200-11740-10003\CAD\SHEET\FILES\TREATMENT PLANT\WTP C-9506 TO C-9506\DETAILS.DWG - REYES, HECTOR



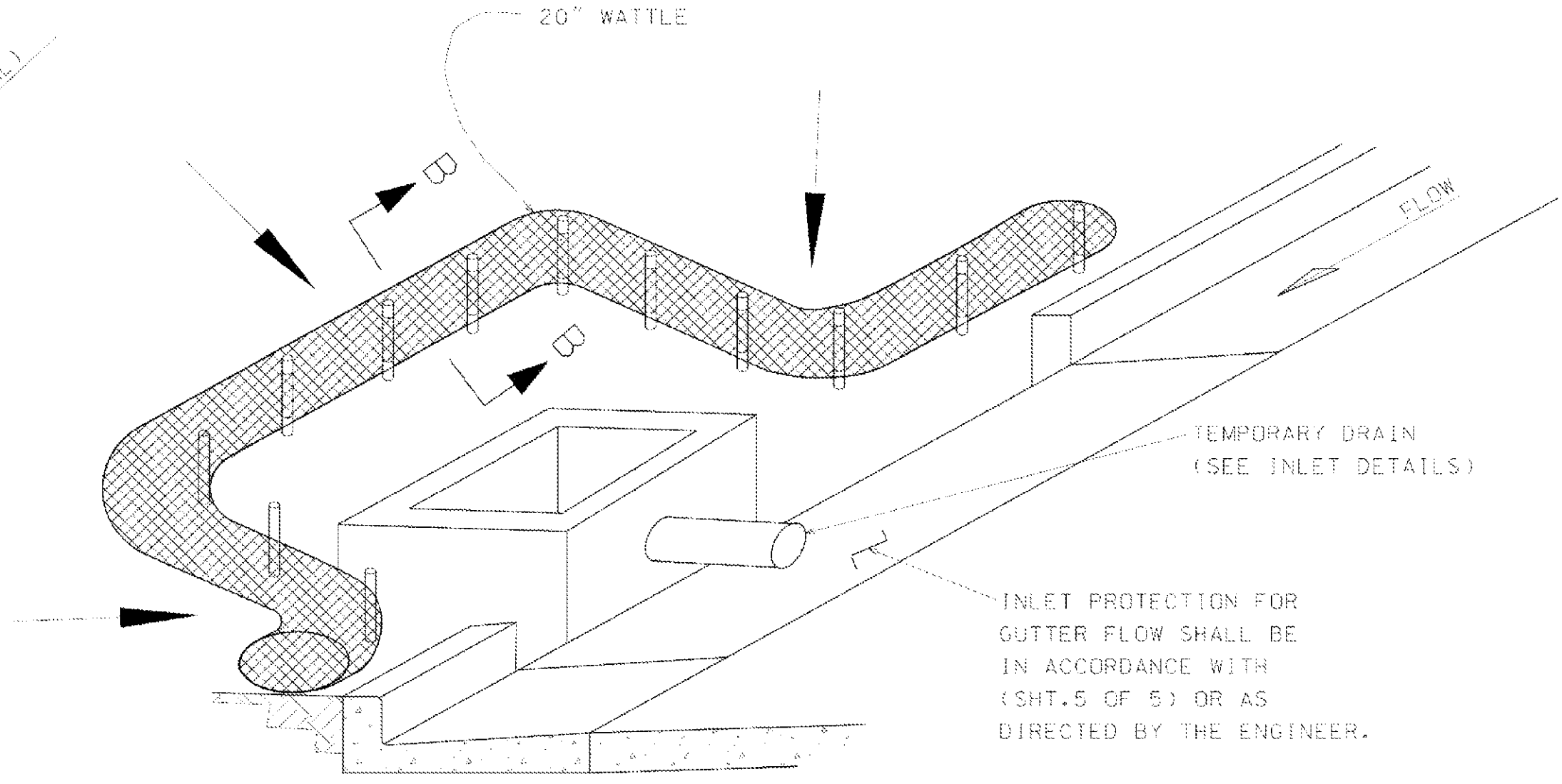
PLAN VIEW



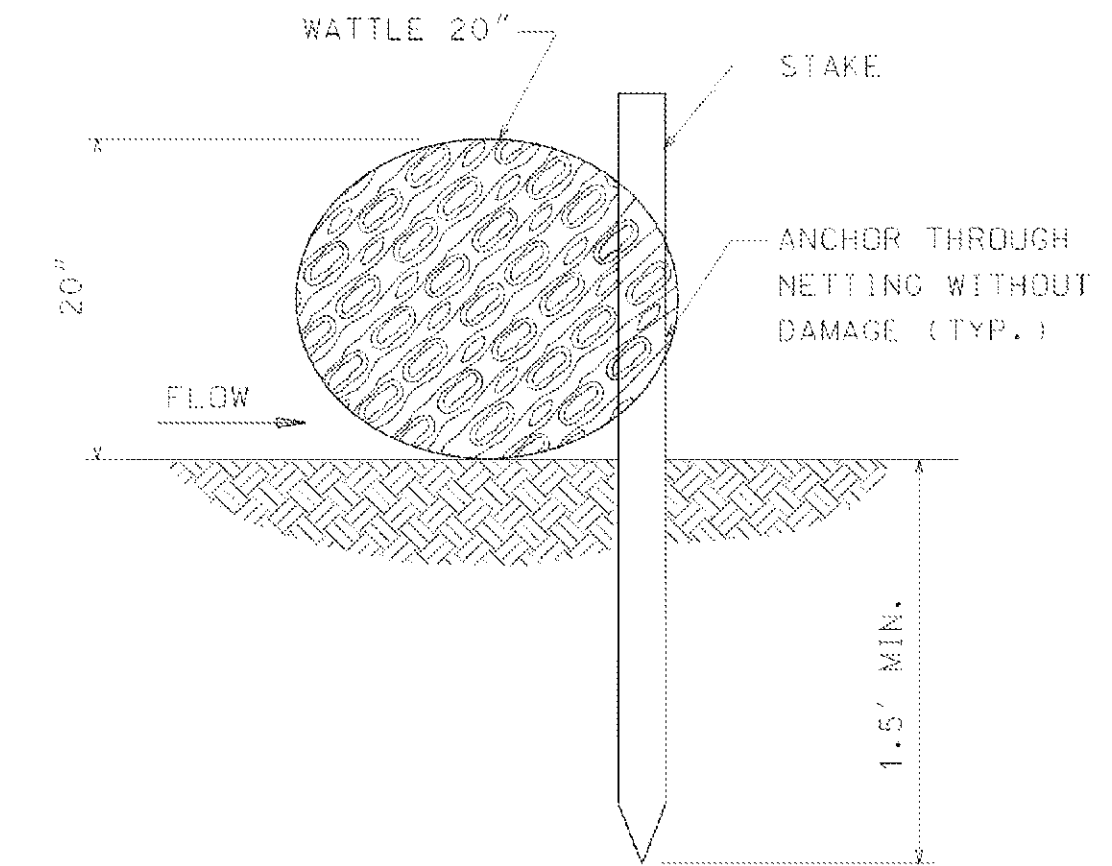
DROP INLET PROTECTION

- NOTES:
1. ANCHORING STAKES SHALL BE SIZED, SPACED, AND BE OF A MATERIAL THAT EFFECTIVELY SECURES THE WATTLE. STAKE SPACING SHALL BE A MAXIMUM OF THREE FEET.
 2. OVERLAP ENDS OF WATTLES PER MANUFACTURERS RECOMMENDATIONS (1' MIN., 3' MAX.).
 3. TRENCHING OF WATTLES MAY BE NECESSARY IF PIPING BECOMES EVIDENT.

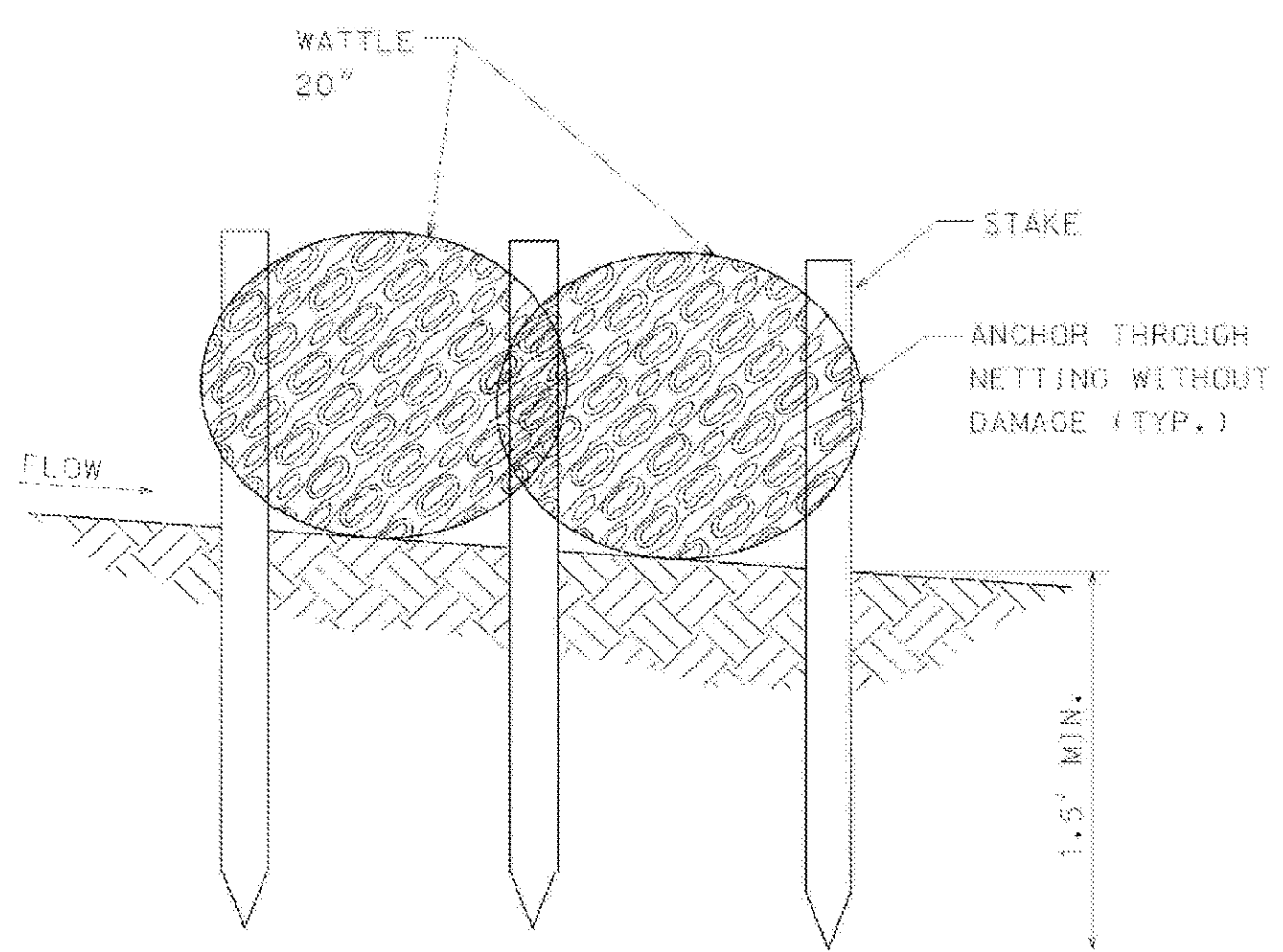
NOTE:
SILT FENCE OR SAND BAGS MAY ALSO BE USED FOR THIS APPLICATION.
HAY BALES NOT ACCEPTABLE DURING THIS STAGE.



CURB INLET PROTECTION (STAGE 2)
SINGLE OR DOUBLE WING INLET



SECTION B-B



SECTION A-A

INLET PROTECTION

1 **DETAIL**
SCALE: N.T.S.

ALABAMA DEPARTMENT
OF TRANSPORTATION
SPECIAL DRAWING NO.
ESC-400
INDEX NO.
1163-B

TETRA TECH
www.tetra-tech.com
101 QUALITY CIRCLE, SUITE 140
HUNTSVILLE, ALABAMA 35806
PHONE: (256) 424-4077 FAX: (256) 424-4097

BID SET
Professional Engineer
ALABAMA
No. 102474

MARK	DATE	DESCRIPTION	BY

HUNTSVILLE UTILITIES
SOUTHEAST WATER TREATMENT PLANT
STANDARD CIVIL DETAILS

Project No.: 200-11740-10003
Designed By: JRW
Drawn By: WDV
Checked By: JPT

C-9506

Copyright: Tetra Tech
Bar Measures 1 inch