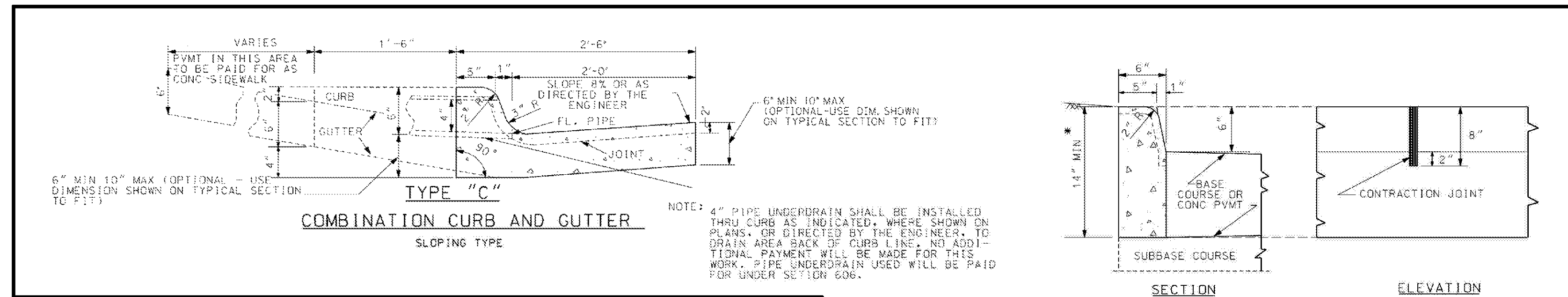


10/1/2014 3:56:27 PM - \\ERS\61\FS\PROJECTS\1740\200-11740-10003\CAD\SHEET\TREATMENT PLANT\TP C-9504 TO C-9506 DETAILS.DWG - REYES, HECTOR

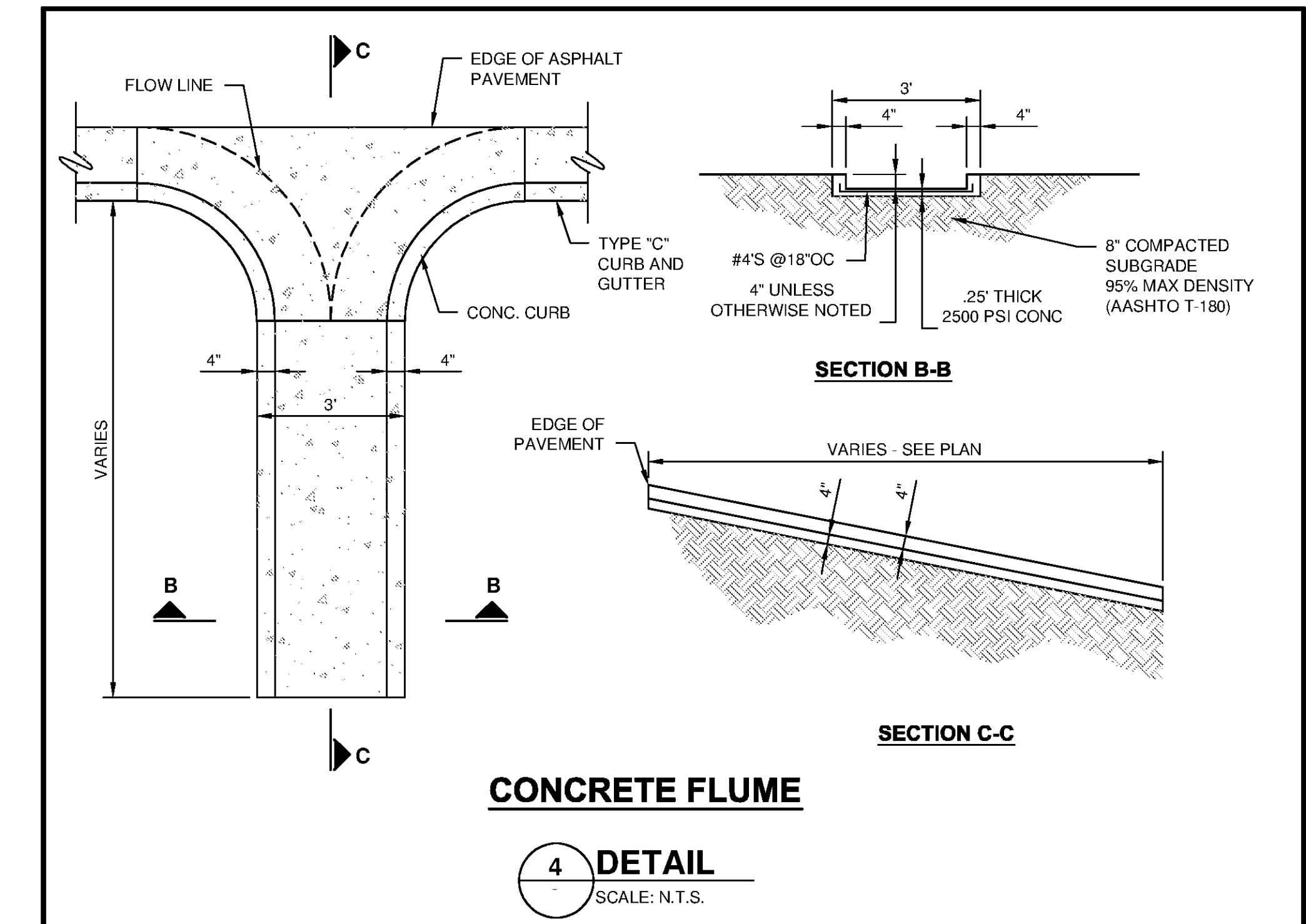


- NOTE:**
- CONSTRUCTION SHALL BE IN ACCORDANCE WITH ALDOT SPECIFICATION 623.
  - TOLERANCES: GRADE LINE AND ALIGNMENT, NOT MORE THAN 1/8" WHEN CHECKED WITH A 10' STRAIGHT EDGE.

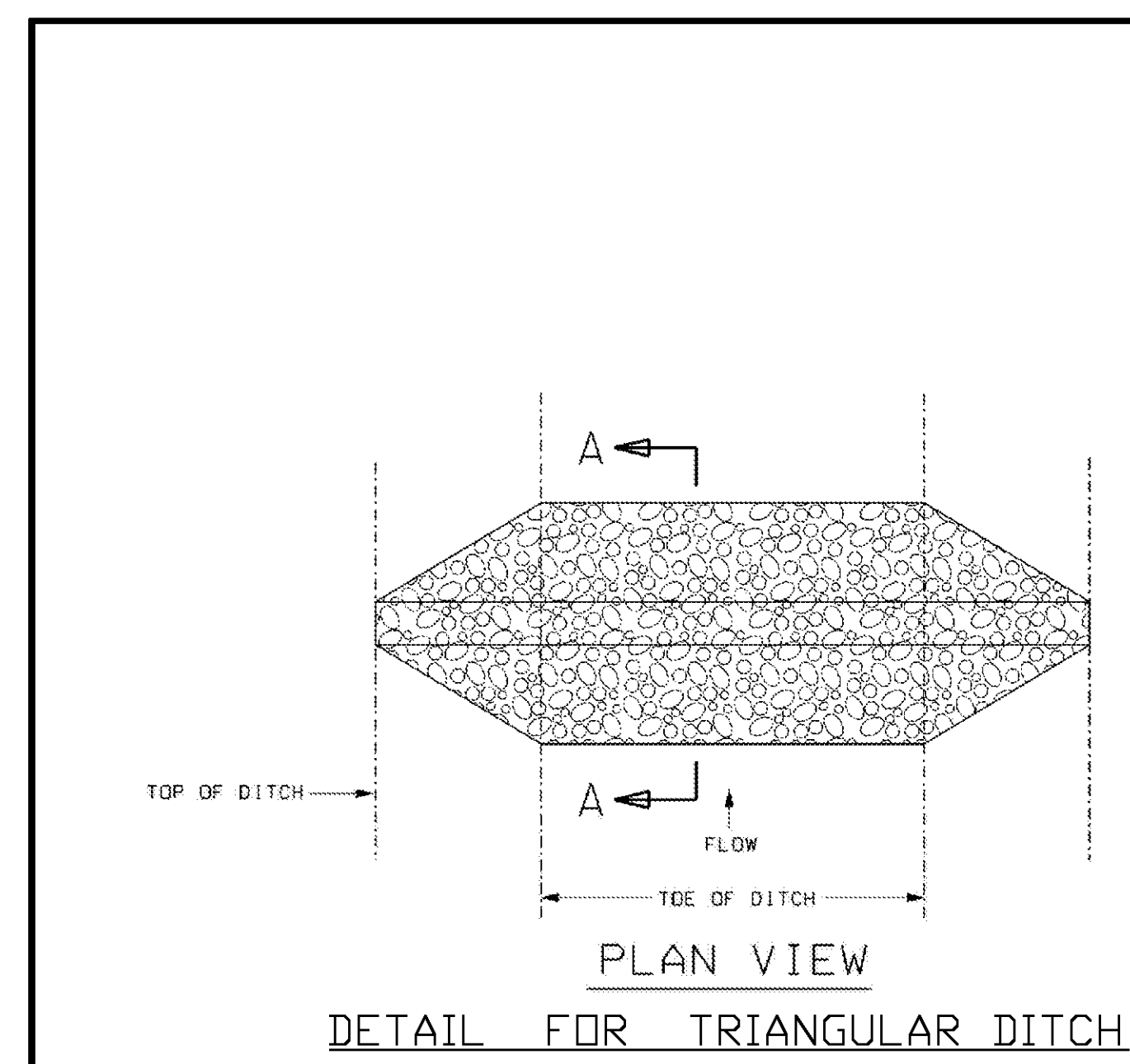
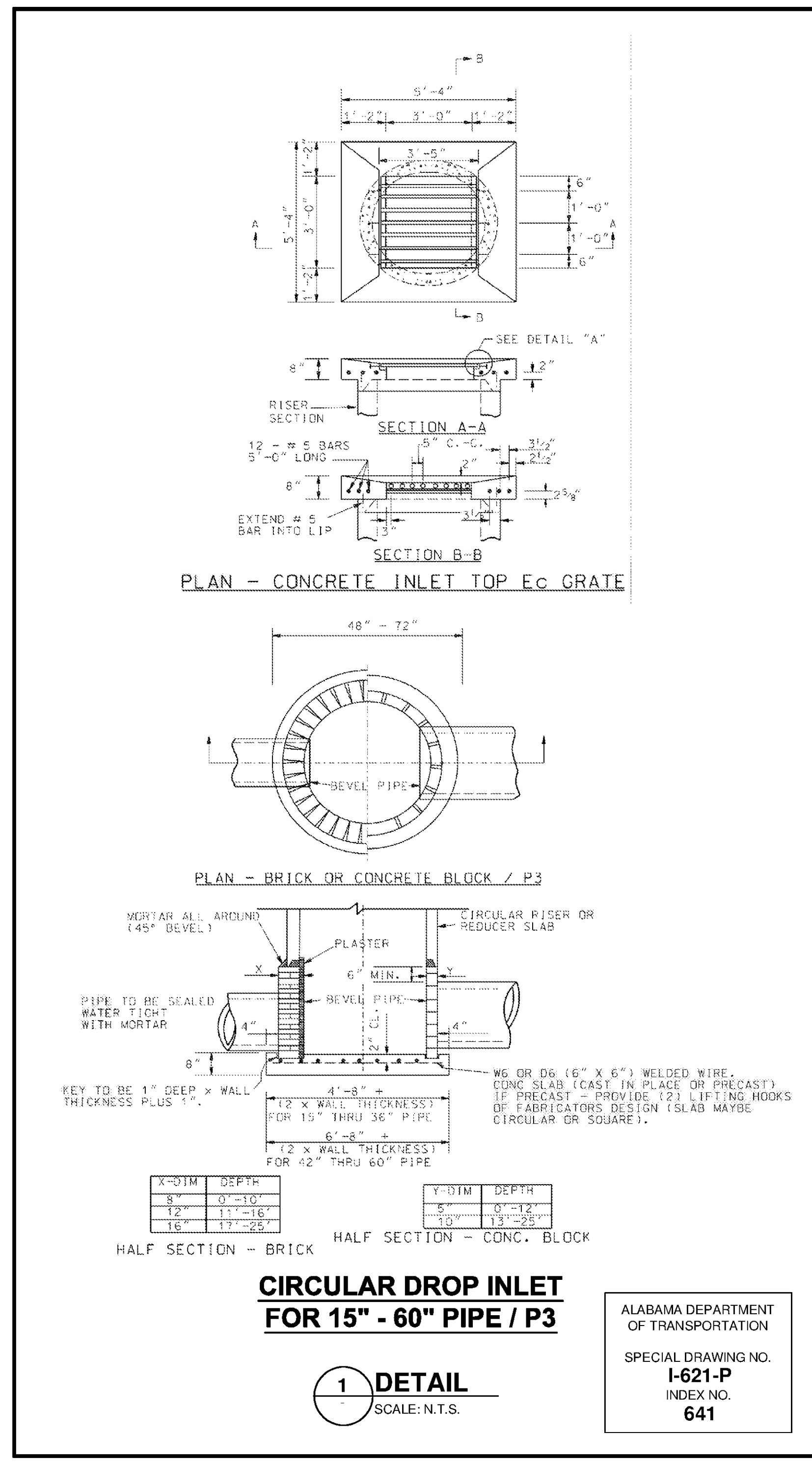
**TYPE "A" CURB AND TYPE "C" CURB AND GUTTER**

**2 DETAIL**  
SCALE: N.T.S.

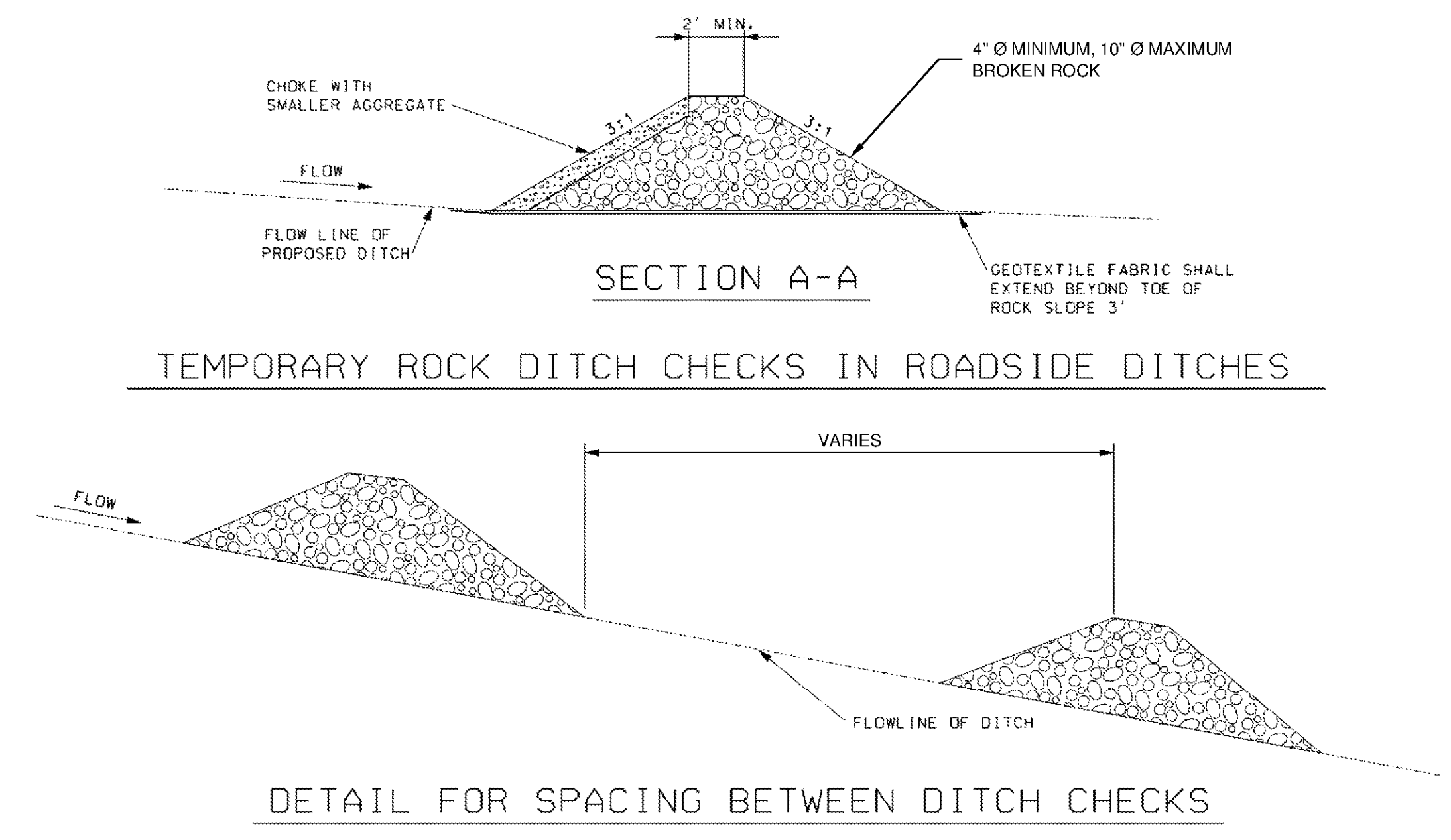
ALABAMA DEPARTMENT OF TRANSPORTATION  
SPECIAL DRAWING NO. **623-XY**  
INDEX NO. **703**



**4 DETAIL**  
SCALE: N.T.S.



- NOTE:**
- DITCH CHECKS CAN BE REMOVED FOR MAINTENANCE AND/OR REPLACEMENT BUT MUST REMAIN IN PLACE UNTIL UPSLOPE AREAS HAVE BEEN PERMANENTLY STABILIZED. MAINTENANCE INCLUDES REMOVAL OF SEDIMENT BEGINNING WHEN SEDIMENT ACCUMULATION REACHES 1/2 THE CAPACITY OR HEIGHT OF THE STRUCTURE AND NEVER ALLOWING FOR SEDIMENT TO ACCUMULATE MORE THAN 1/2 THE VOLUME OR HEIGHT OF THE DITCH CHECK STRUCTURE.



**DITCH CHECK STRUCTURE**

**3 DETAIL**  
SCALE: N.T.S.

ALABAMA DEPARTMENT OF TRANSPORTATION  
SPECIAL DRAWING NO. **ESC-300**  
INDEX NO. **1162-E**

**TETRA TECH**

www.tetratech.com

101 QUALITY CIRCLE, SUITE 140  
HUNTSVILLE, ALABAMA 35806  
PHONE: (256) 424-4077 FAX: (256) 424-4097

BID SET

MARK	DATE	DESCRIPTION

BY	DATE	DESCRIPTION

HUNTSVILLE UTILITIES  
SOUTHEAST WATER TREATMENT PLANT

**STANDARD CIVIL DETAILS**

Project No.: 200-11740-10003  
Designed By: JRW  
Drawn By: WDV  
Checked By: JPT

**C-9504**

Copyright Tetra Tech