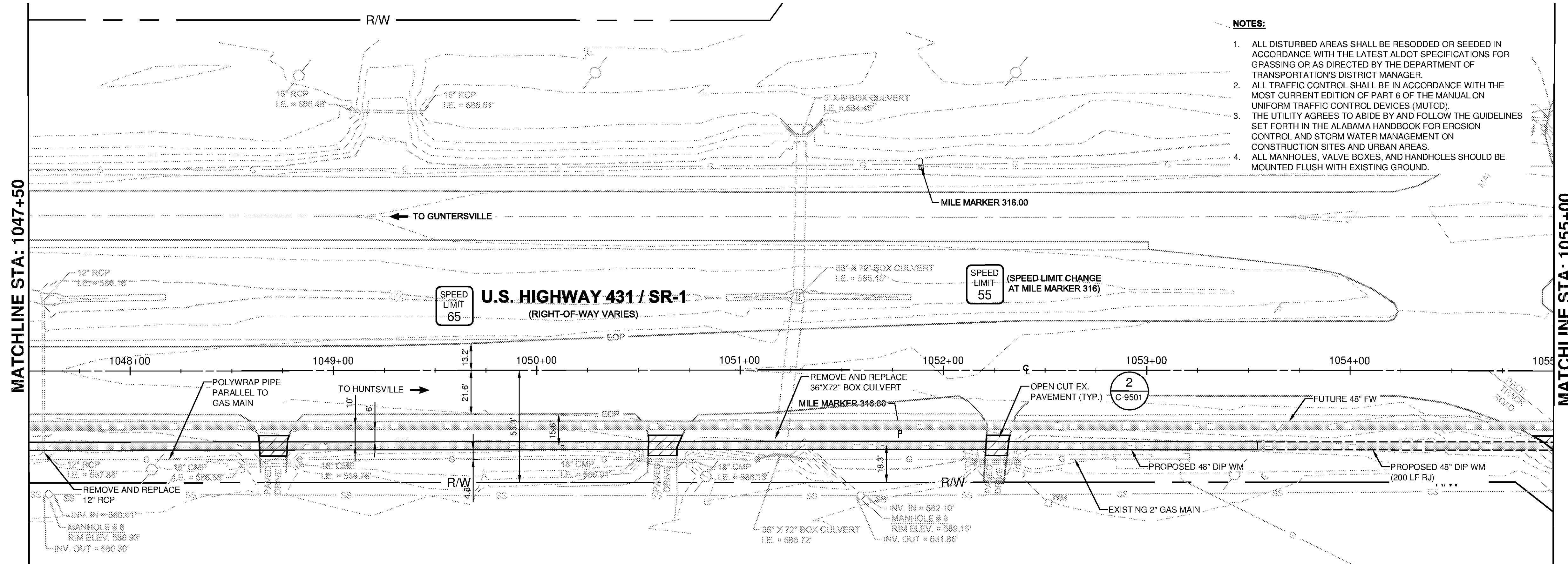
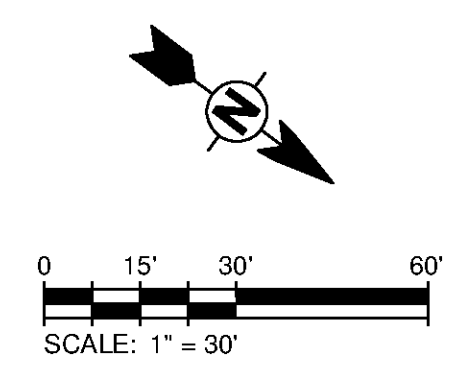


1 2 3 4 5 6 7



- NOTES:**
1. ALL DISTURBED AREAS SHALL BE RESODDED OR SEEDING IN ACCORDANCE WITH THE LATEST ALDOT SPECIFICATIONS FOR GRASSING OR AS DIRECTED BY THE DEPARTMENT OF TRANSPORTATION'S DISTRICT MANAGER.
 2. ALL TRAFFIC CONTROL SHALL BE IN ACCORDANCE WITH THE MOST CURRENT EDITION OF PART 6 OF THE MANUAL ON UNIFORM TRAFFIC CONTROL DEVICES (MUTCD). THE UTILITY AGREES TO ABIDE BY AND FOLLOW THE GUIDELINES SET FORTH IN THE ALABAMA HANDBOOK FOR EROSION CONTROL AND STORM WATER MANAGEMENT ON CONSTRUCTION SITES AND URBAN AREAS.
 3. ALL MANHOLES, VALVE BOXES, AND HANDHOLES SHOULD BE MOUNTED FLUSH WITH EXISTING GROUND.



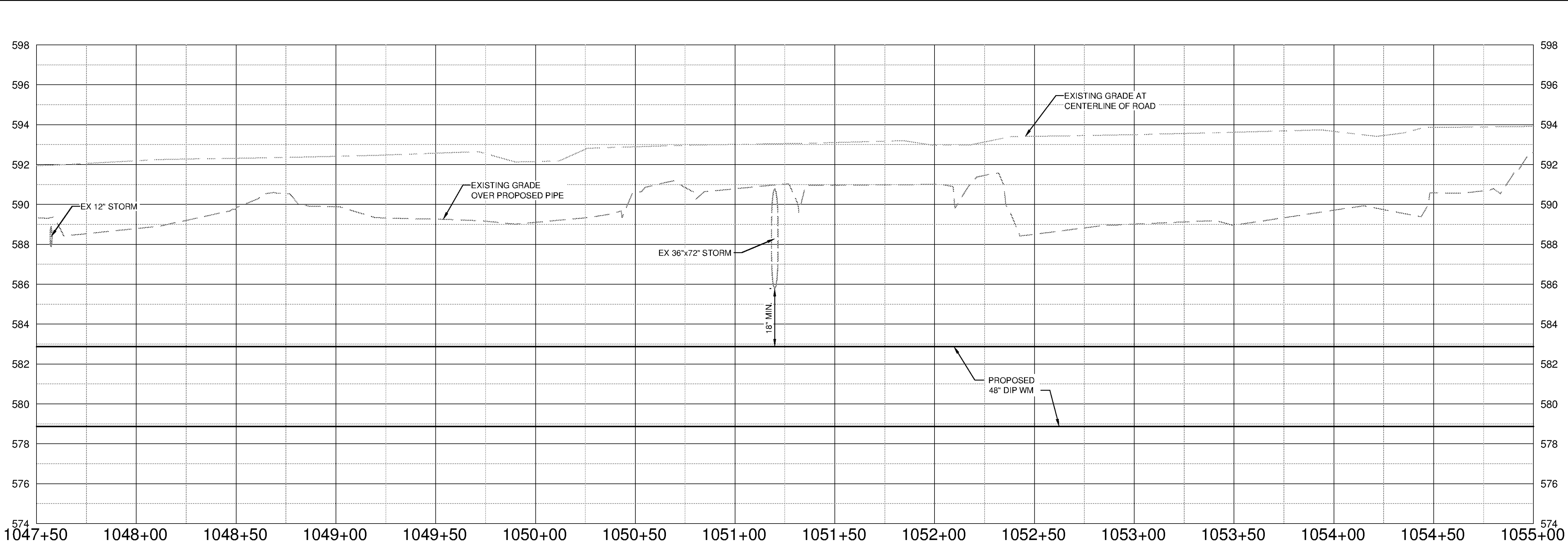
MATCHLINE STA: 1047+50

MATCHLINE STA: 1055+00

SPEED LIMIT 65

SPEED LIMIT 55
(SPEED LIMIT CHANGE AT MILE MARKER 316)

U.S. HIGHWAY 431 / SR-1
(RIGHT-OF-WAY VARIES)



SCALE
HORIZ. 1" = 30'
VERT. 1" = 3'

10/9/2014 5:59:02 PM - P:\IER\11740\200-11740-10003\CAD\SHEETFILES\TREATMENT PLANT\FWC-2046.DWG - DAVALOS, PAULA

TETRA TECH
www.tetra-tech.com
101 QUALITY CIRCLE, SUITE 140
HUNTSVILLE, ALABAMA 35806
PHONE: (256) 424-4077 FAX: (256) 424-4097

BID SET

BY	DATE	DESCRIPTION

MARK	DATE	DESCRIPTION

HUNTSVILLE UTILITIES
SOUTHEAST WATER TREATMENT PLANT
**FINISHED WATER MAIN
PLAN AND PROFILE
STA 1047+50 TO 1055+00**

Project No.: 200-11740-10003
Designed By: DNL
Drawn By: WDV
Checked By: JPT

C-2046

Copyright Tetra Tech
Bar Measures 1 inch