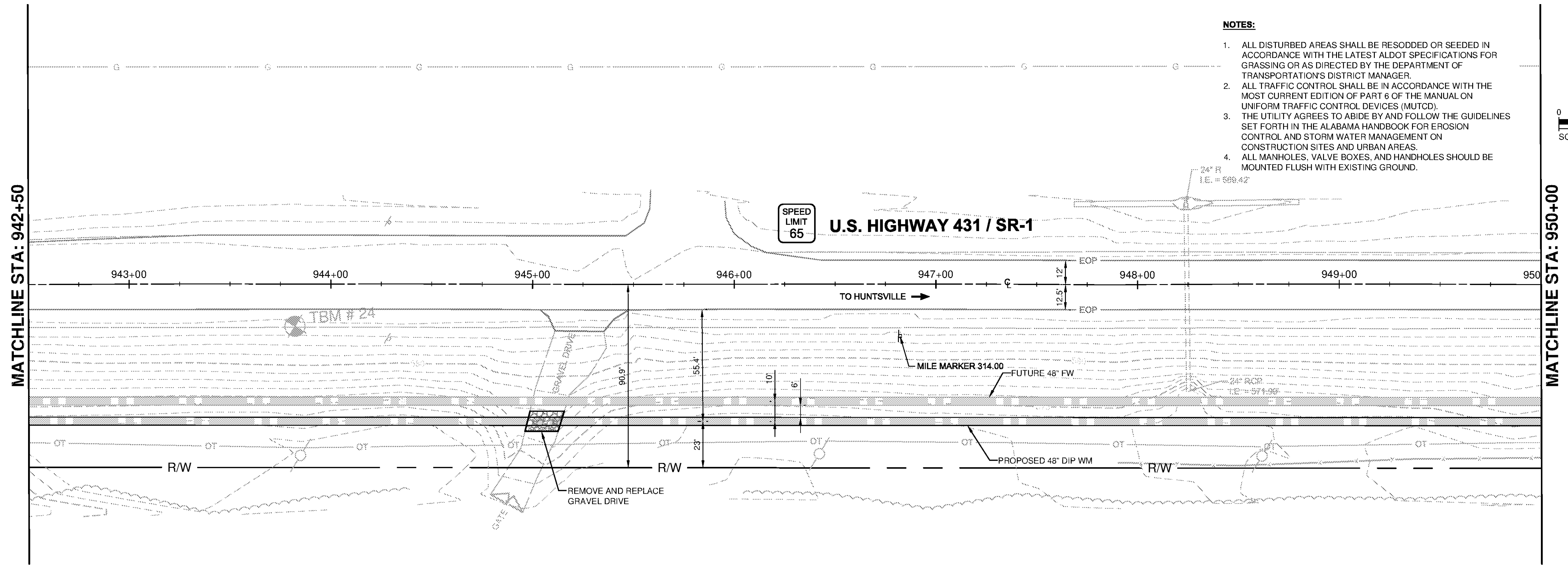
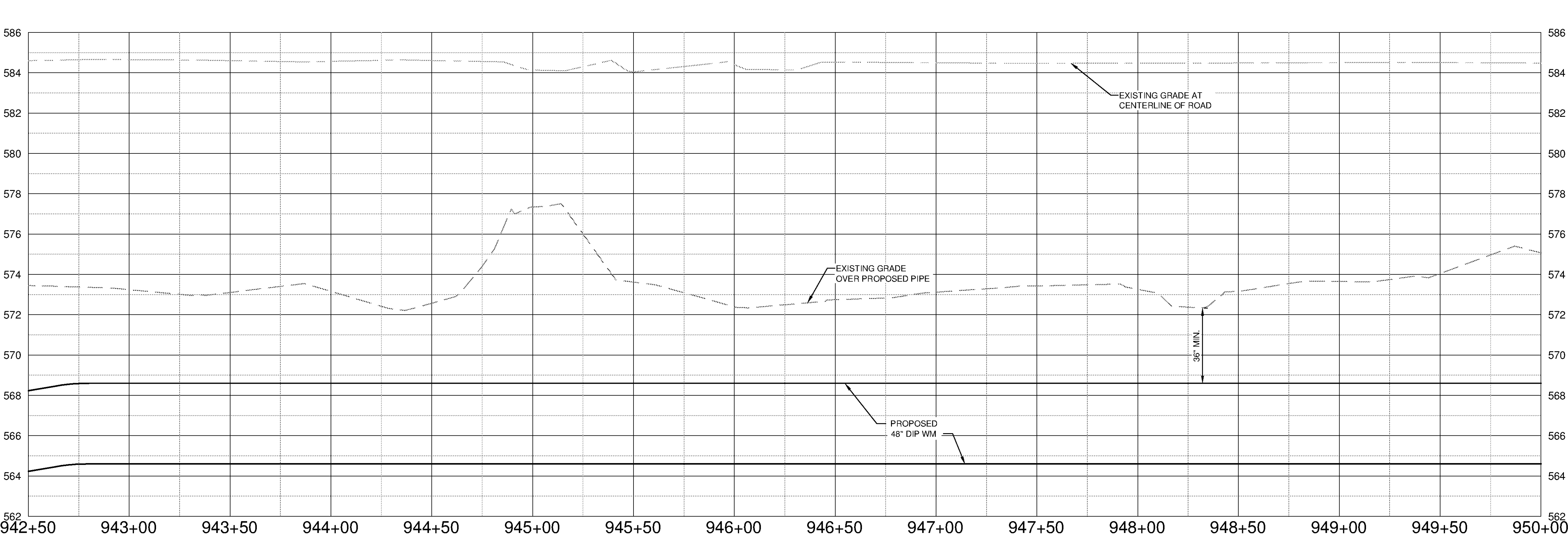


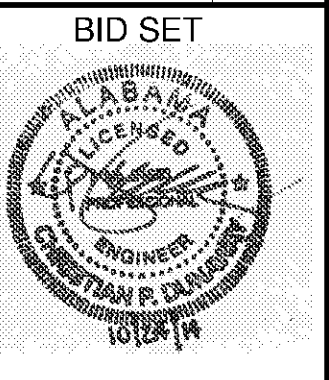
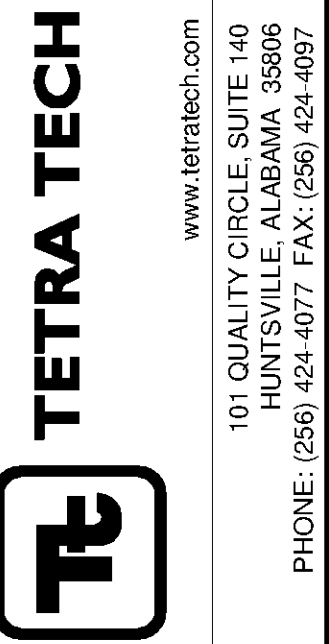
1 2 3 4 5 6 7



- NOTES:**
- ALL DISTURBED AREAS SHALL BE RESODDED OR SEEDING IN ACCORDANCE WITH THE LATEST ALDOT SPECIFICATIONS FOR GRASSING OR AS DIRECTED BY THE DEPARTMENT OF TRANSPORTATION'S DISTRICT MANAGER.
 - ALL TRAFFIC CONTROL SHALL BE IN ACCORDANCE WITH THE MOST CURRENT EDITION OF PART 6 OF THE MANUAL ON UNIFORM TRAFFIC CONTROL DEVICES (MUTCD).
 - THE UTILITY AGREES TO ABIDE BY AND FOLLOW THE GUIDELINES SET FORTH IN THE ALABAMA HANDBOOK FOR EROSION CONTROL AND STORM WATER MANAGEMENT ON CONSTRUCTION SITES AND URBAN AREAS.
 - ALL MANHOLES, VALVE BOXES, AND HANDHOLES SHOULD BE MOUNTED FLUSH WITH EXISTING GROUND.



SCALE
HORIZ. 1" = 30'
VERT. 1" = 3'



BID SET

10/9/2014 5:29:59 PM - P:\IER\11740\200-11740-10003\CAD\SHEETFILES\TREATMENT PLANT\FWC-2032 TO C-2032.DWG - DAVALOS, PAULA

BY	DATE	DESCRIPTION

HUNTSVILLE UTILITIES
SOUTHEAST WATER TREATMENT PLANT
**FINISHED WATER MAIN
PLAN AND PROFILE
STA 942+50 TO 950+00**

Project No.: 200-11740-10003
Designed By: DNL
Drawn By: WDV
Checked By: JPT

C-2032

Copyright: Tetra Tech
Bar Measures 1 inch