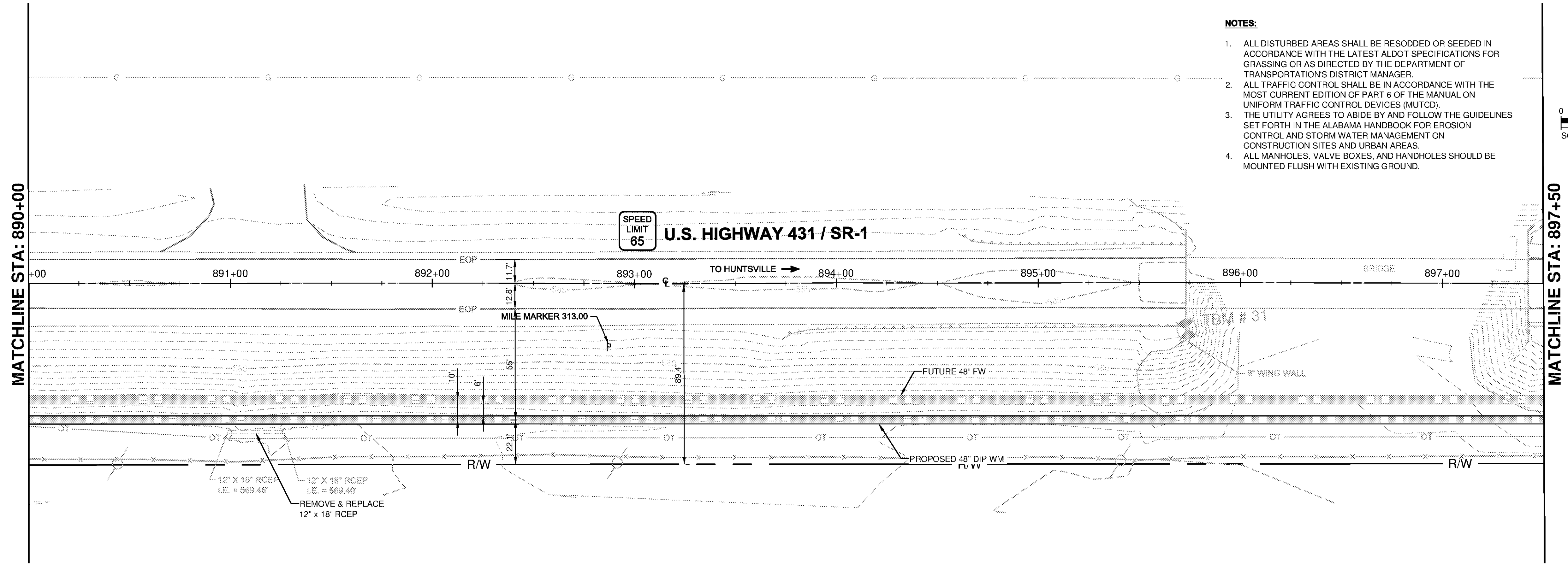
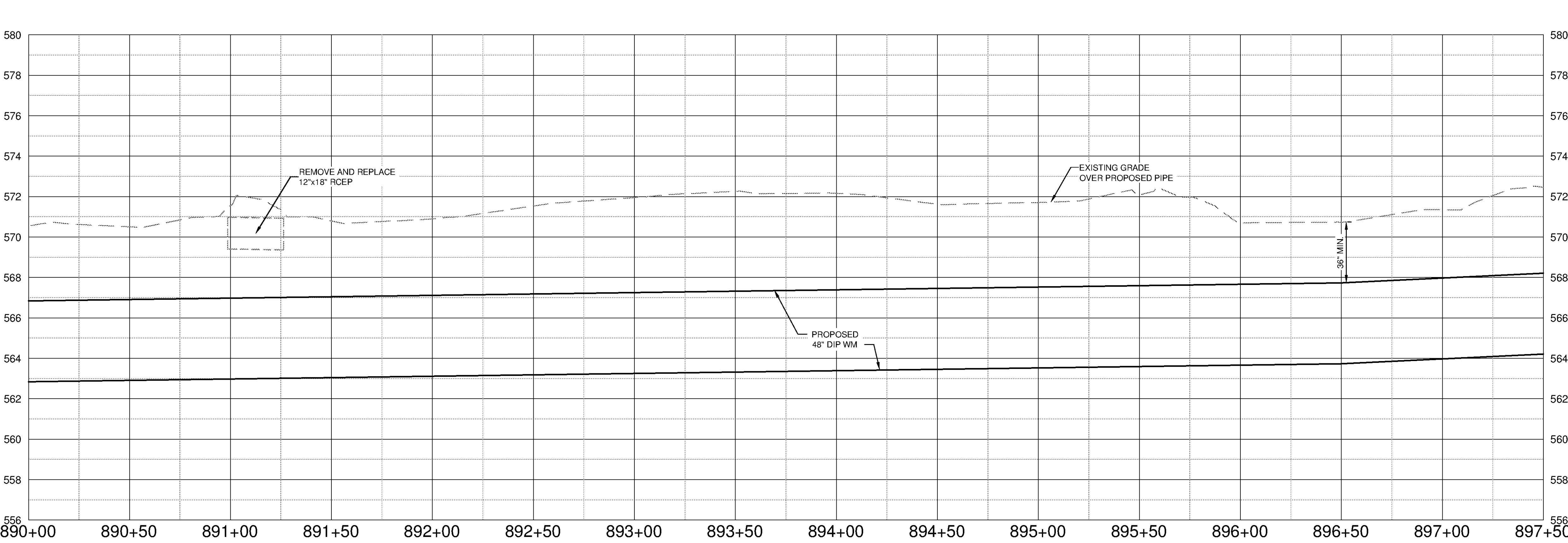
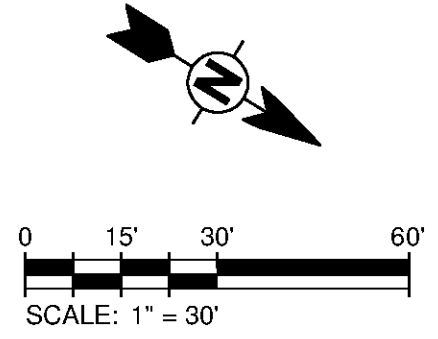


1 2 3 4 5 6 7

F
E
D
C
B
A



- NOTES:**
1. ALL DISTURBED AREAS SHALL BE RESODDED OR SEEDING IN ACCORDANCE WITH THE LATEST ALDOT SPECIFICATIONS FOR GRASSING OR AS DIRECTED BY THE DEPARTMENT OF TRANSPORTATION'S DISTRICT MANAGER.
 2. ALL TRAFFIC CONTROL SHALL BE IN ACCORDANCE WITH THE MOST CURRENT EDITION OF PART 6 OF THE MANUAL ON UNIFORM TRAFFIC CONTROL DEVICES (MUTCD).
 3. THE UTILITY AGREES TO ABIDE BY AND FOLLOW THE GUIDELINES SET FORTH IN THE ALABAMA HANDBOOK FOR EROSION CONTROL AND STORM WATER MANAGEMENT ON CONSTRUCTION SITES AND URBAN AREAS.
 4. ALL MANHOLES, VALVE BOXES, AND HANDHOLES SHOULD BE MOUNTED FLUSH WITH EXISTING GROUND.



SCALE
HORIZ. 1" = 30'
VERT. 1" = 3'

TETRA TECH
www.tetra.tech.com
101 QUALITY CIRCLE, SUITE 140
HUNTSVILLE, ALABAMA 35806
PHONE: (256) 424-4077 FAX: (256) 424-4097

BID SET
Professional Engineer Seal for Alabama, License No. 101247, dated 10/27/14.

MARK	DATE	DESCRIPTION	BY

HUNTSVILLE UTILITIES
SOUTHEAST WATER TREATMENT PLANT
**FINISHED WATER MAIN
PLAN AND PROFILE
STA 890+00 TO 897+50**

Project No.: 200-11740-10003
Designed By: JRW
Drawn By: WDV
Checked By: JT

C-2025

10/9/2014 5:16:56 PM - P:\IER\11740\200-11740-10003\CAD\SHEETFILES\TREATMENT PLANT\FW\C-2025.DWG - DAVALOS, PAULA