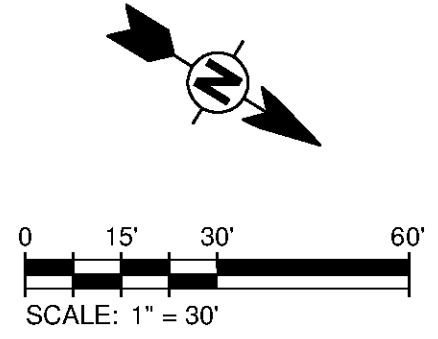


- NOTES:**
1. ALL DISTURBED AREAS SHALL BE RESODDED OR SEEDING IN ACCORDANCE WITH THE LATEST ALDOT SPECIFICATIONS FOR GRASSING OR AS DIRECTED BY THE DEPARTMENT OF TRANSPORTATION'S DISTRICT MANAGER.
 2. ALL TRAFFIC CONTROL SHALL BE IN ACCORDANCE WITH THE MOST CURRENT EDITION OF PART 6 OF THE MANUAL ON UNIFORM TRAFFIC CONTROL DEVICES (MUTCD).
 3. THE UTILITY AGREES TO ABIDE BY AND FOLLOW THE GUIDELINES SET FORTH IN THE ALABAMA HANDBOOK FOR EROSION CONTROL AND STORM WATER MANAGEMENT ON CONSTRUCTION SITES AND URBAN AREAS.
 4. ALL MANHOLES, VALVE BOXES, AND HANDHOLES SHOULD BE MOUNTED FLUSH WITH EXISTING GROUND.



MATCHLINE STA: 860+00

MATCHLINE STA: 867+50

SPEED LIMIT 65 U.S. HIGHWAY 431 / SR-1

TO HUNTSVILLE →

PROPOSED 48" 22.5° BEND (RJ)
STA=860+08.58, 67.90'R

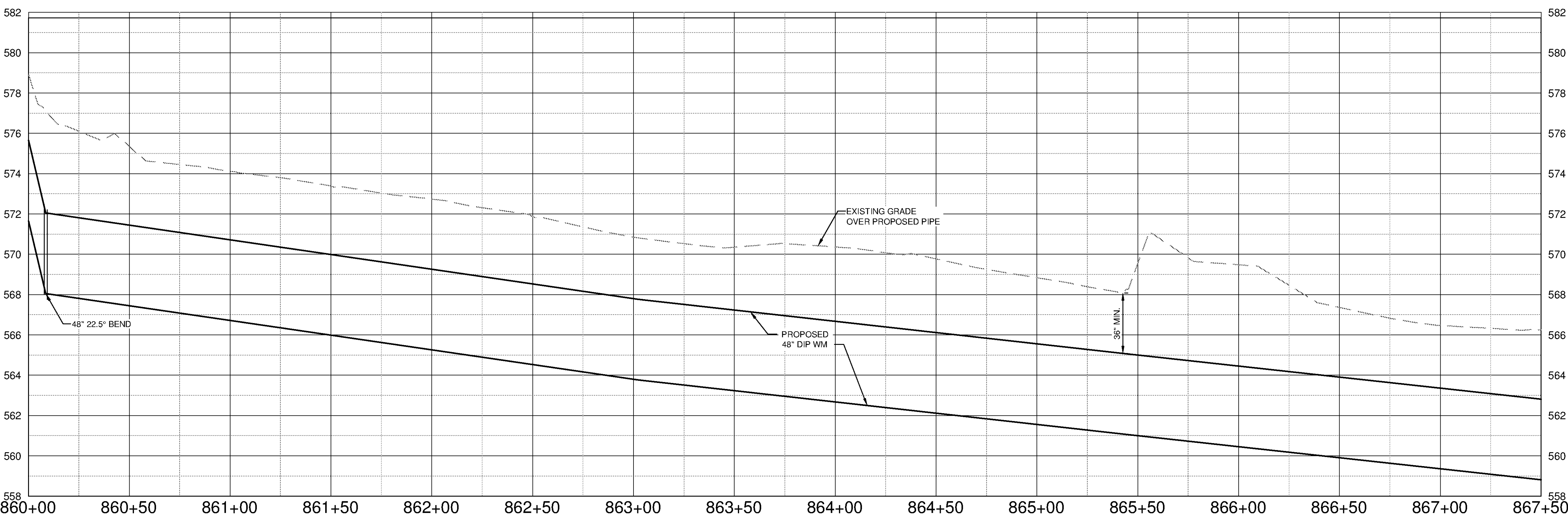
PROPOSED 48" DIP WM
(200 LF RJ)

HUNTSVILLE UTILITIES
TO RELOCATE
POWER POLE

PROPOSED 48" DIP WM

HUNTSVILLE UTILITIES
TO RELOCATE
POWER POLE

7
C-9502
WATER SAMPLE STATION
STA=866+50.00, 102.60'R



SCALE
HORIZ. 1" = 30'
VERT. 1" = 3'

10/9/2014 5:05:59 PM - P:\IER\11740\200-11740-10003\CAD\SHEETFILES\TREATMENT PLANT\FW C-2021 TO C-2024.DWG - DAVALOS, PAULA

TETRA TECH
www.tetra-tech.com
101 QUALITY CIRCLE, SUITE 140
HUNTSVILLE, ALABAMA 35806
PHONE: (256) 424-4077 FAX: (256) 424-4097

BID SET
Professional Engineer Seal for Paul A. Davalos, License No. 35806, State of Alabama.

BY	DATE	DESCRIPTION

HUNTSVILLE UTILITIES
SOUTHEAST WATER TREATMENT PLANT
**FINISHED WATER MAIN
PLAN AND PROFILE
STA 860+00 TO 867+50**

Project No.: 200-11740-10003
Designed By: DNL
Drawn By: WDV
Checked By: JPT

C-2021

Copyright: Tetra Tech
Bar Measures 1 inch