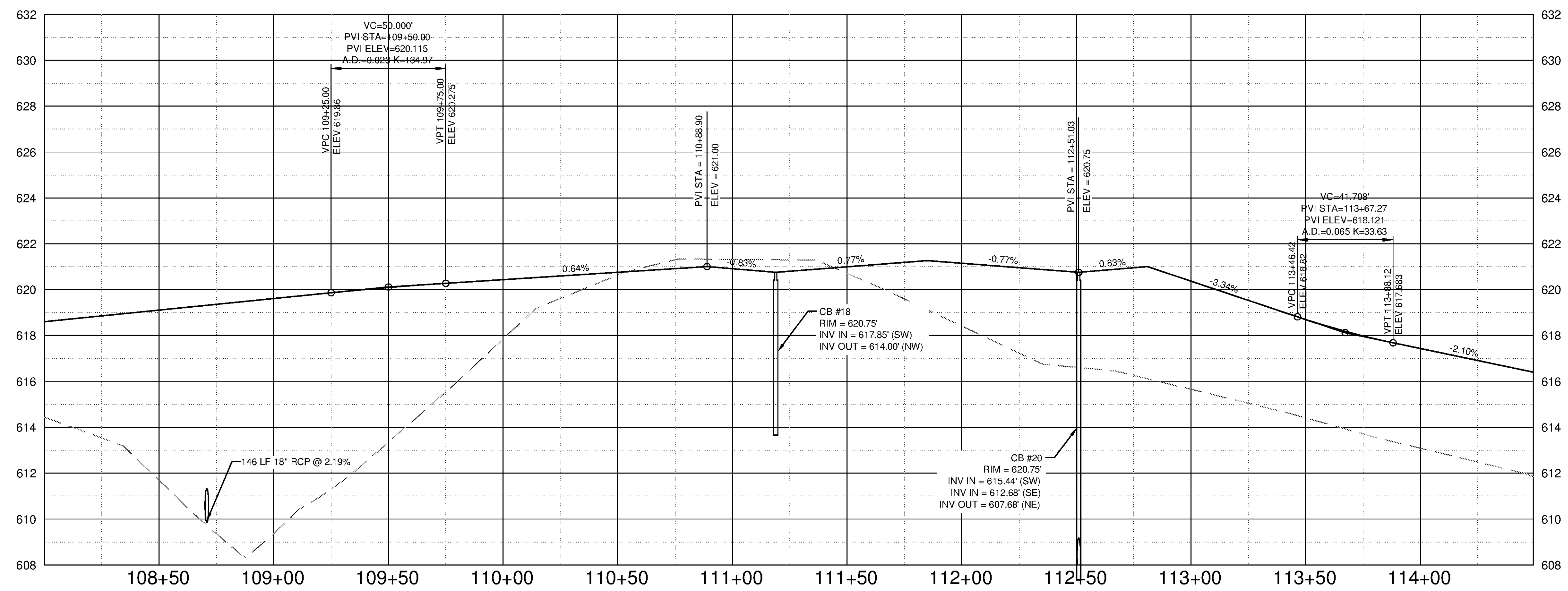
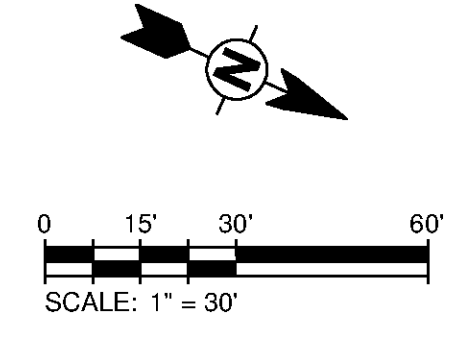
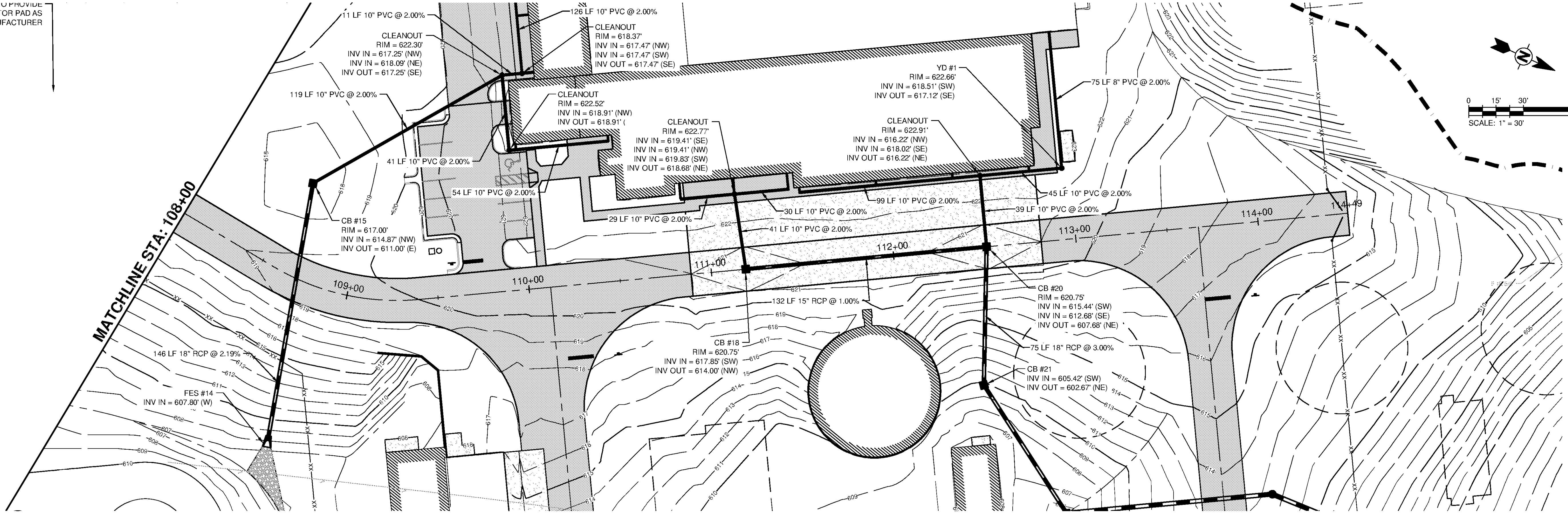


10/1/2014 2:20:08 PM - \\ERS161FS1\PROJECTS\IER11740\200-11740-10003\CAD\SHEETFILES\TREATMENT PLANT\WP C-1109 TO C-1109 ENTRANCE RD PLANS AND PROFILES.DWG - REVES, HECTOR

ACTOR TO PROVIDE  
ATE MOTOR PAD AS  
BY MANUFACTURER

MATCHLINE STA: 108+00



SCALE  
HORIZ. 1" = 30'  
VERT. 1" = 3'

**TETRA TECH**  
www.tetrattech.com  
101 QUALITY CIRCLE, SUITE 140  
HUNTSVILLE, ALABAMA 35806  
PHONE: (256) 424-4077 FAX: (256) 424-4097

BID SET  
*[Signature]*  
10/24/14

MARK	DATE	DESCRIPTION	BY

HUNTSVILLE UTILITIES  
SOUTHEAST WATER TREATMENT PLANT  
**WTP ENTRANCE RD  
PLAN AND PROFILE**

Project No.: 200-11740-10003  
Designed By: JRW  
Drawn By: JDW  
Checked By: JPT

**C-1109**

Copyright: Tetra Tech  
Bar Measures 1 inch