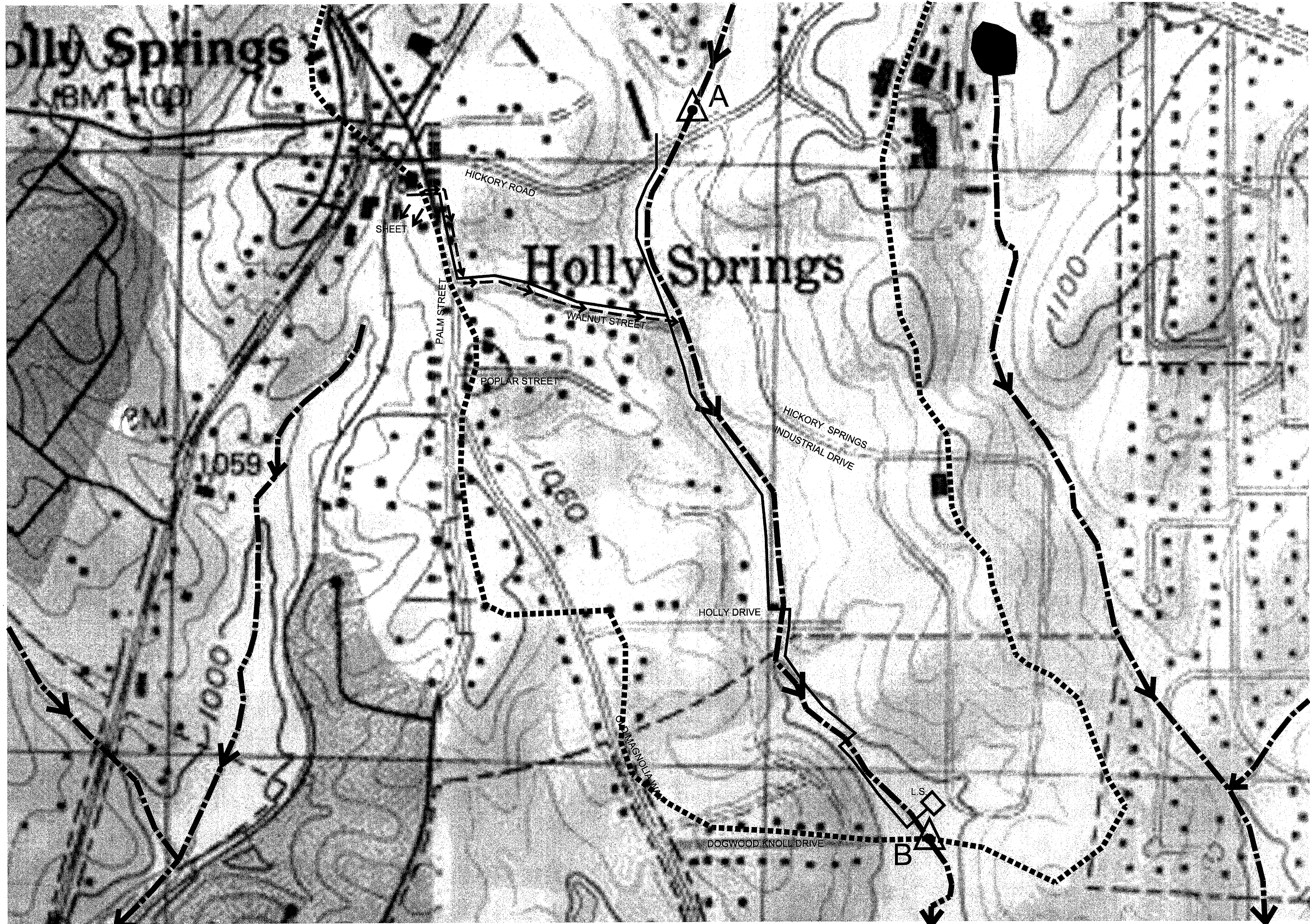
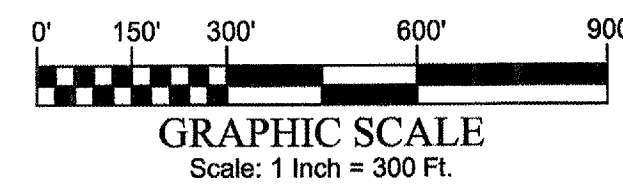


| LEGEND | |
|--------|-------------------------|
| | MONITORING LOCATION |
| | PERENNIAL STREAM |
| | DIRECTION OF FLOW |
| | DRAINAGE BASIN BOUNDARY |

NOTE:
SEE SHEET G-01 FOR DELINEATION OF ENTIRE DRAINAGE BASIN UPSTREAM OF STORMWATER MONITORING SITES.



NOTE:
1. NO NEW OUTFALLS SHALL BE CREATED BY THIS PROJECT.

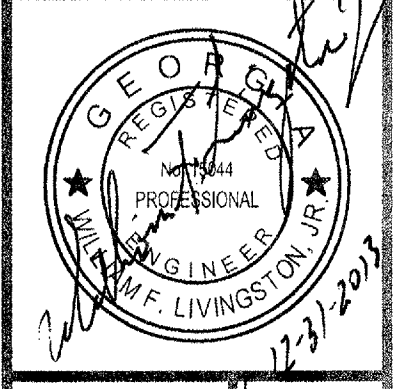


I certify that the permittee's Erosion, Sedimentation and Pollution Control Plan provides for an appropriate and comprehensive system of best management practices required by the Georgia Water Quality Control Act and the document "Manual for Erosion and Sediment Control in Georgia" (Manual) published by the State Soil and Water Conservation Commission as of January 1 of the year in which the land-disturbing activity was permitted, provides for the sampling of the receiving water(s) or the sampling of the storm water outfalls and that the designed system of best management practices and sampling methods is expected to meet the requirements contained in the General NPDES Permit No. Gar 100002.

William F. Livingston, Jr., Professional Engineer
GSWCC LEVEL II Certified Design Professional Certification # 21845

I CERTIFY UNDER PENALTY OF LAW THAT THIS PLAN WAS PREPARED AFTER A SITE VISIT TO THE LOCATION DESCRIBED HERE-IN BY MYSELF OR MY AUTHORIZED AGENT UNDER MY DIRECT SUPERVISION.

William F. Livingston, Jr.
William F. Livingston, Jr., Professional Engineer
GSWCC LEVEL II Certified Design Professional Certification # 21845



ATKINS
192 Anderson Street, Suite 150
Marietta, Ga 30060
P: 770-422-1902 F: 770-426-5316

| PROJ. NO.: | 100034005 |
|-----------------|--|
| DESIGNED BY: | R.A.G. |
| DRAWN BY: | M.R.T. |
| CHECKED BY: | W.F.L. |
| APPROVED BY: | W.F.L. |
| DATE: | AUGUST, 2013 |
| SCALE: | AS SHOWN |
| REVISION | |
| DATE | 12-23-13 |
| REVIEW COMMENTS | CITY OF HOLLY SPRINGS PLAN REVIEW COMMENTS |
| | |
| | |
| | |
| | |

CHEROKEE COUNTY WATER & SEWERAGE AUTHORITY
HOLLY SPRINGS
DOWNTOWN SANITARY SEWER SYSTEM
COMPREHENSIVE MONITORING PLAN

SHEET NO.
CMP-02