

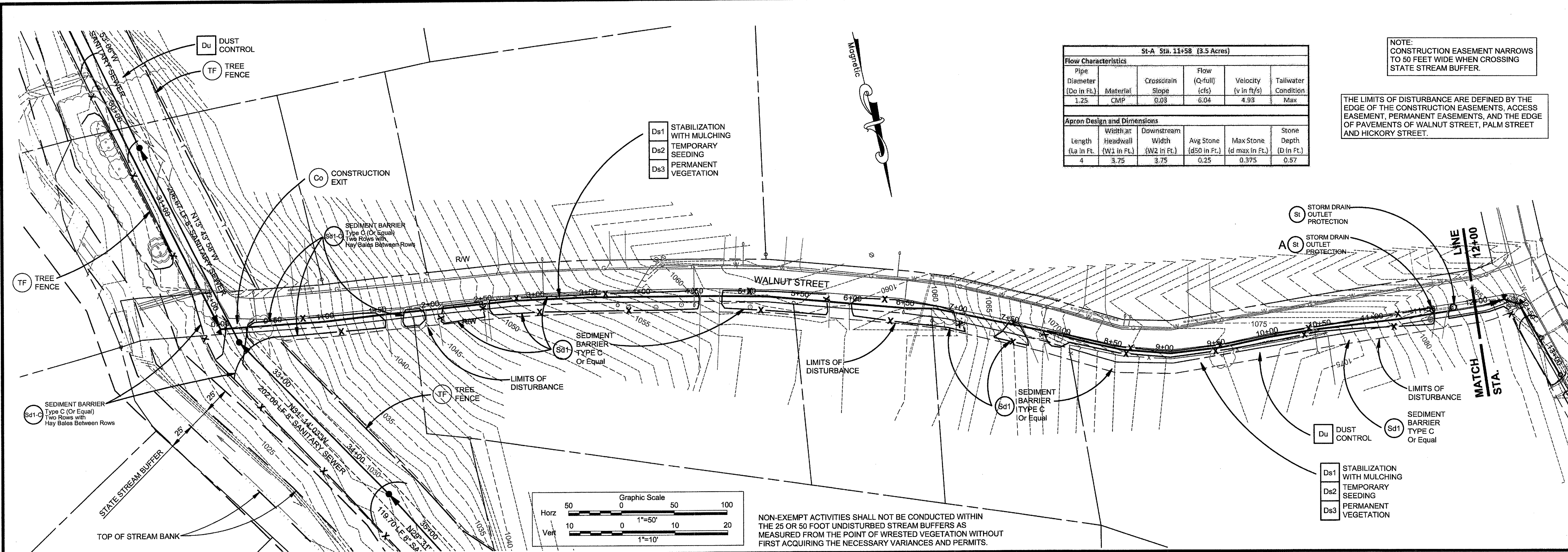
ATKINS
 192 Anderson Street, Suite 150
 Marietta Ga 30060
 P. 770-422-1902 F. 770-426-5316

DATE	REVISION
12-23-13	CITY OF HOLLY SPRINGS PLAN REVIEW COMMENTS
12-28-13	REVISED ALIGNMENT PER EASEMENT ACQUISITIONS
1/2/14	REVISED PLAN PER CITY OF HOLLY SPRINGS COMMENTS

CHEROKEE COUNTY WATER & SEWERAGE AUTHORITY
 HOLLY SPRINGS
 DOWNTOWN SANITARY SEWER SYSTEM
 EROSION CONTROL PLAN

SHEET NO.
EC-03

File Name: S:\CHEROKEECOWSA\PROJECTS\15_PLANS\EROSION CONTROL PLAN.Dwg Job: EC-03 Plotted: April 07, 2014 11:17am



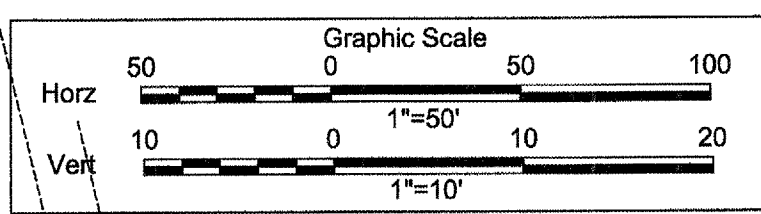
St-A Sta. 11+58 (3.5 Acres)

Flow Characteristics					
Pipe Diameter (Do in Ft.)	Material	Crossdrain Slope	Flow (Q-full) (cfs)	Velocity (v in ft/s)	Tailwater Condition
1.25	CMP	0.03	6.04	4.93	Max

Apron Design and Dimensions					
Length (La in Ft.)	Width at Headwall (W1 in Ft.)	Downstream Width (W2 in Ft.)	Avg Stone (d50 in Ft.)	Max Stone (d max in Ft.)	Stone Depth (D in Ft.)
4	3.75	3.75	0.25	0.375	0.57

NOTE: CONSTRUCTION EASEMENT NARROWS TO 50 FEET WIDE WHEN CROSSING STATE STREAM BUFFER.

THE LIMITS OF DISTURBANCE ARE DEFINED BY THE EDGE OF THE CONSTRUCTION EASEMENTS, ACCESS EASEMENT, PERMANENT EASEMENTS, AND THE EDGE OF PAVEMENTS OF WALNUT STREET, PALM STREET AND HICKORY STREET.



NON-EXEMPT ACTIVITIES SHALL NOT BE CONDUCTED WITHIN THE 25 OR 50 FOOT UNDISTURBED STREAM BUFFERS AS MEASURED FROM THE POINT OF WRESTED VEGETATION WITHOUT FIRST ACQUIRING THE NECESSARY VARIANCES AND PERMITS.

St-B Sta. 12+80 (1 Acre)

Flow Characteristics					
Pipe Diameter (Do in Ft.)	Material	Crossdrain Slope	Flow (Q-full) (cfs)	Velocity (v in ft/s)	Tailwater Condition
1.25	VCP	0.01	5.23	4.27	Max

Apron Design and Dimensions					
Length (La in Ft.)	Width at Headwall (W1 in Ft.)	Downstream Width (W2 in Ft.)	Avg Stone (d50 in Ft.)	Max Stone (d max in Ft.)	Stone Depth (D in Ft.)
2	3.75	3.75	0.2	0.3	0.45

St-C Sta. 13+20 (2.5 Acres)

Flow Characteristics					
Pipe Diameter (Do in Ft.)	Material	Crossdrain Slope	Flow (Q-full) (cfs)	Velocity (v in ft/s)	Tailwater Condition
1.25	RCP	0.01	6.44	5.25	Max

Apron Design and Dimensions					
Length (La in Ft.)	Width at Headwall (W1 in Ft.)	Downstream Width (W2 in Ft.)	Avg Stone (d50 in Ft.)	Max Stone (d max in Ft.)	Stone Depth (D in Ft.)
5	3.75	3.75	0.25	0.375	0.57

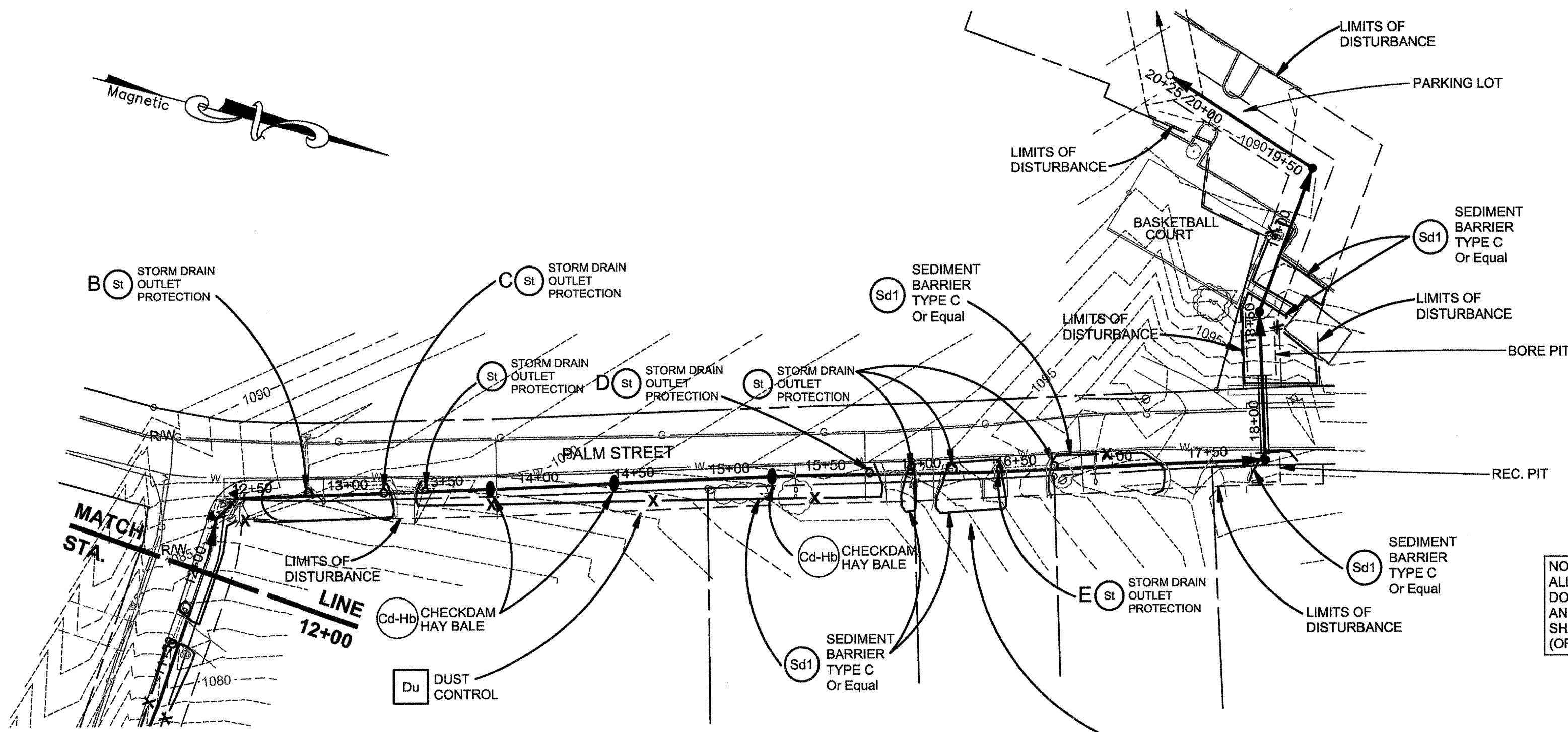
St-D Sta. 15+73 (2.0 Acres)

Flow Characteristics					
Pipe Diameter (Do in Ft.)	Material	Crossdrain Slope	Flow (Q-full) (cfs)	Velocity (v in ft/s)	Tailwater Condition
1.25	RCP	0.01	6.44	5.25	Max

Apron Design and Dimensions					
Length (La in Ft.)	Width at Headwall (W1 in Ft.)	Downstream Width (W2 in Ft.)	Avg Stone (d50 in Ft.)	Max Stone (d max in Ft.)	Stone Depth (D in Ft.)
5	3.75	3.75	0.25	0.375	0.57

NON-EXEMPT ACTIVITIES SHALL NOT BE CONDUCTED WITHIN THE 25 OR 50 FOOT UNDISTURBED STREAM BUFFERS AS MEASURED FROM THE POINT OF WRESTED VEGETATION WITHOUT FIRST ACQUIRING THE NECESSARY VARIANCES AND PERMITS.

NOTE: CITY OF HOLLY SPRINGS PLAN REVIEW COMMENT REQUIRED ST'S BE USED AT STORM DRAIN INLETS AT DRIVEWAY CROSSDRAINS.



St-E Sta. 16+40 (1.4 Acres)

Flow Characteristics					
Pipe Diameter (Do in Ft.)	Material	Crossdrain Slope	Flow (Q-full) (cfs)	Velocity (v in ft/s)	Tailwater Condition
1.25	CMP	0.01	9.5	2.85	Max

Apron Design and Dimensions					
Length (La in Ft.)	Width at Headwall (W1 in Ft.)	Downstream Width (W2 in Ft.)	Avg Stone (d50 in Ft.)	Max Stone (d max in Ft.)	Stone Depth (D in Ft.)
2	3.75	3.75	0.2	0.3	0.45

NOTE: ALL SILT FENCE INSTALLED DOWNSTREAM OF CONSTRUCTION AND WITHIN 200 L.F. OF STATE WATERS SHALL BE DOUBLE ROW OF TYPE C (OR EQUAL) WITH HAY BALES BETWEEN ROWS.

- Ds1 STABILIZATION WITH MULCHING
- Ds2 TEMPORARY SEEDING
- Ds3 PERMANENT VEGETATION

I certify under penalty of law that this Plan was prepared after a site visit to the locations described herein by myself or my authorized agent, under my supervision.
 W. F. Livingston
 Professional Engineer
 GSWCC Level II Certified Design Professional