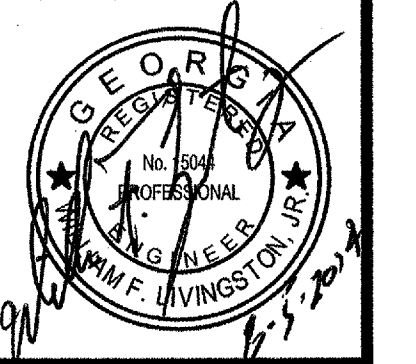


B.M. ELEV.= 1007.69
NAIL IN POWER POLE



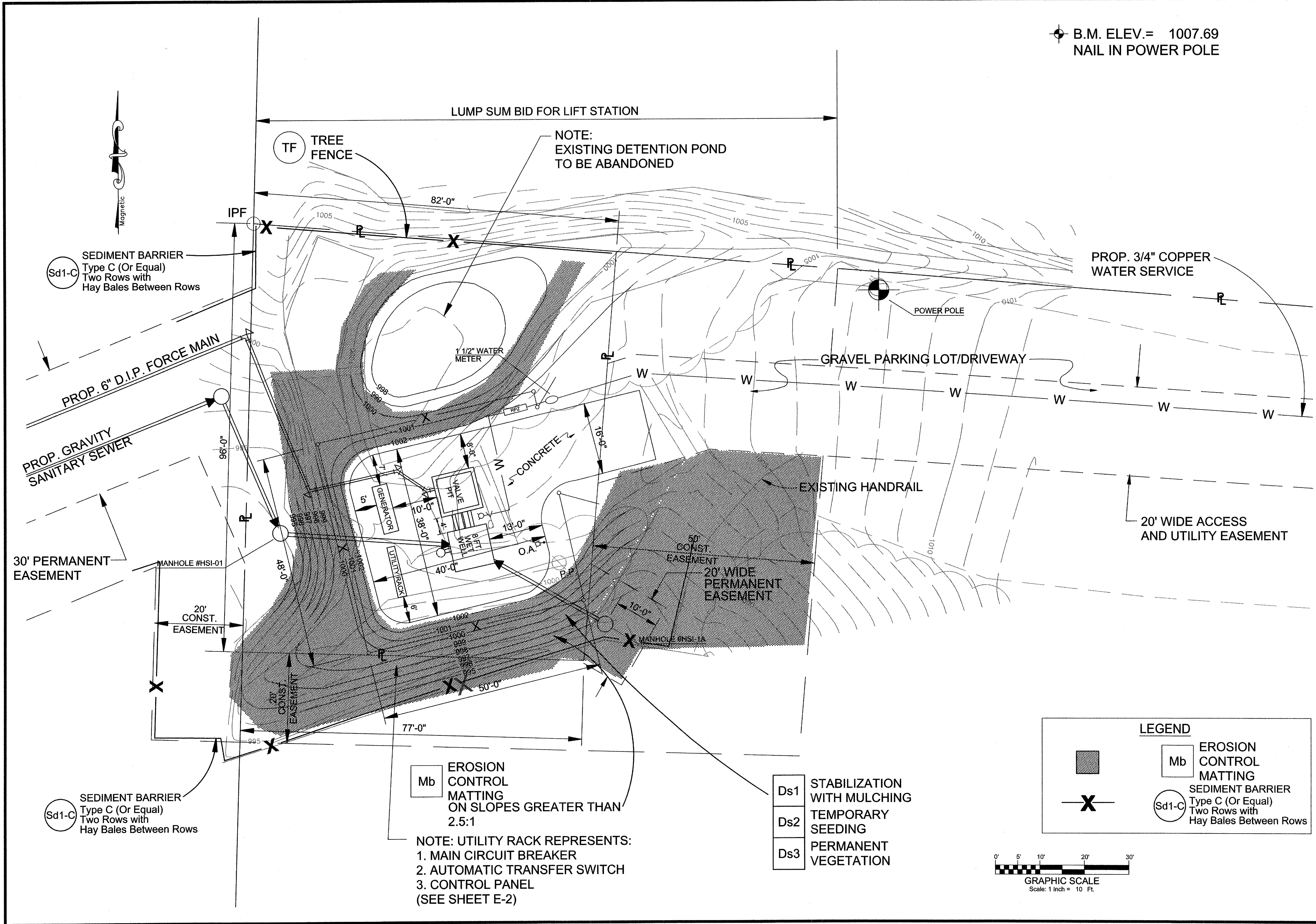
ATKINS

192 Anderson Street, Suite 150
Marietta, Ga 30060
P: 770-422-1902 F: 770-426-5316

| DATE | REVISION |
|----------|---------------------------------|
| 10-14-13 | 1 COWSA COMMENTS |
| 11-18-13 | 2 REVISED LIFT STATION PROPERTY |
| 02-28-14 | 3 REVISED LIFT STATION PROPERTY |
| 04-07-14 | 4 ADDED EROSION CONTROL |
| 07-07-14 | 5 REVISED PER GIS/CC COMMENTS |

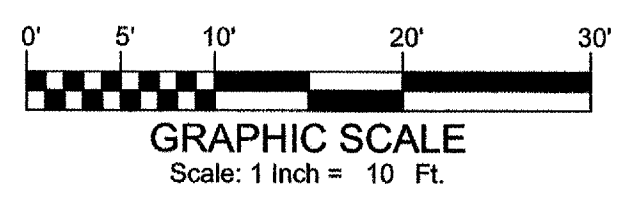
CHEROKEE COUNTY WATER & SEWERAGE AUTHORITY
HOLLY SPRINGS
DOWNTOWN SANITARY SEWER SYSTEM
PUMP STATION PLAN

SHEET NO.
PS-01



LEGEND

| | |
|--|--------------------------------------------------------------------------------------|
| | Mb EROSION CONTROL MATTING |
| | Sd1-C SEDIMENT BARRIER Type C (Or Equal) Two Rows with Hay Bales Between Rows |
| | Ds1 STABILIZATION WITH MULCHING |
| | Ds2 TEMPORARY SEEDING |
| | Ds3 PERMANENT VEGETATION |



Mb EROSION CONTROL MATTING ON SLOPES GREATER THAN 2.5:1

NOTE: UTILITY RACK REPRESENTS:
1. MAIN CIRCUIT BREAKER
2. AUTOMATIC TRANSFER SWITCH
3. CONTROL PANEL
(SEE SHEET E-2)