

**ATKINS**

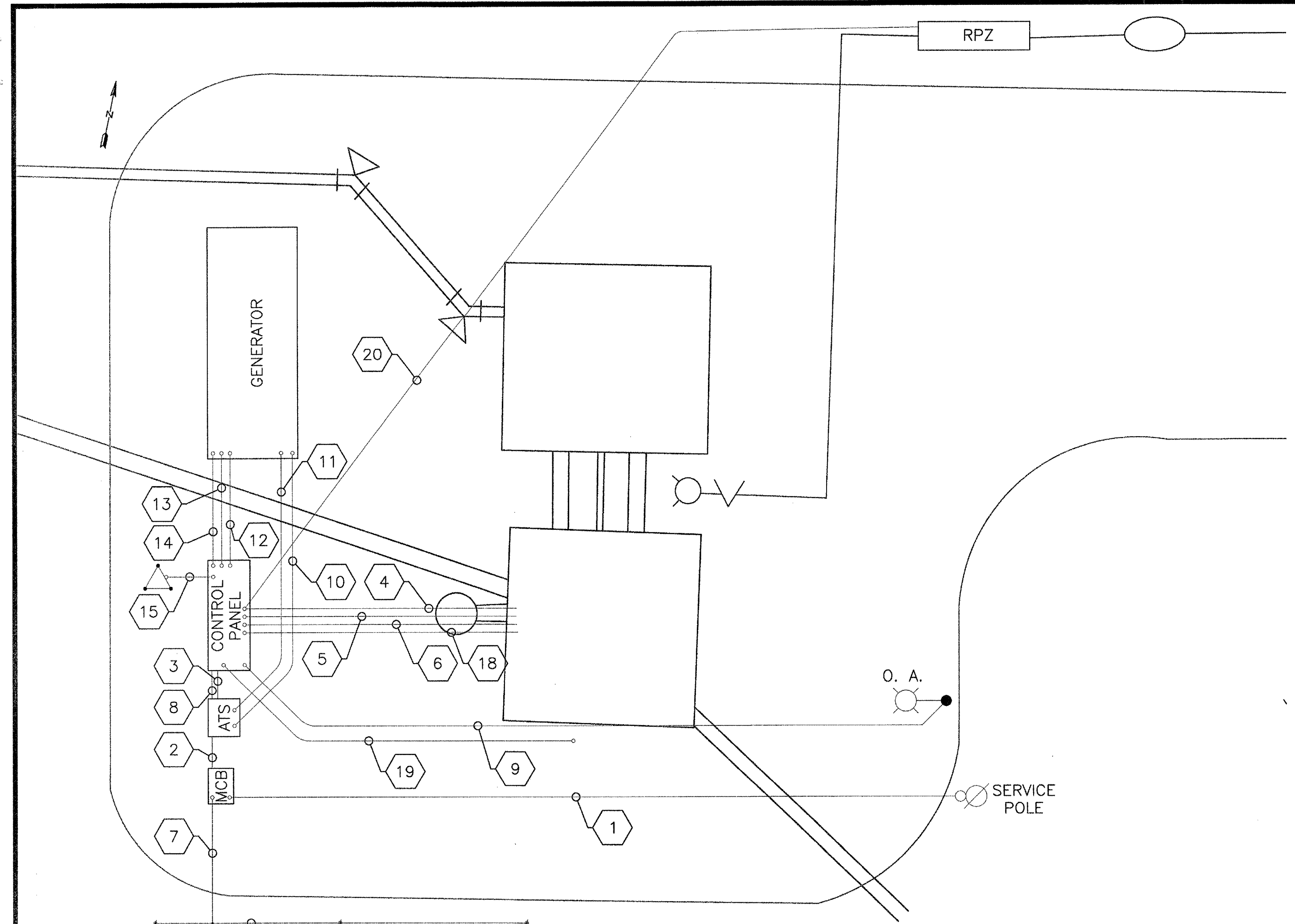
192 Anderson Street, Suite 150  
Marietta, Ga 30060  
P: 770-422-1902 F: 770-426-5316

DATE	REVISION	PROJ. NO.	DESIGNED BY:	DRAWN BY:	CHECKED BY:	APPROVED BY:	DATE:	SCALE:
10-14-13		100034005	PWW	JAL	PWW	PWW	AUGUST, 2013	AS NOTED
11-18-13	1							
	2							

CHEROKEE COUNTY WATER & SEWERAGE AUTHORITY  
HOLLY SPRINGS  
DOWNTOWN SANITARY SEWER SYSTEM

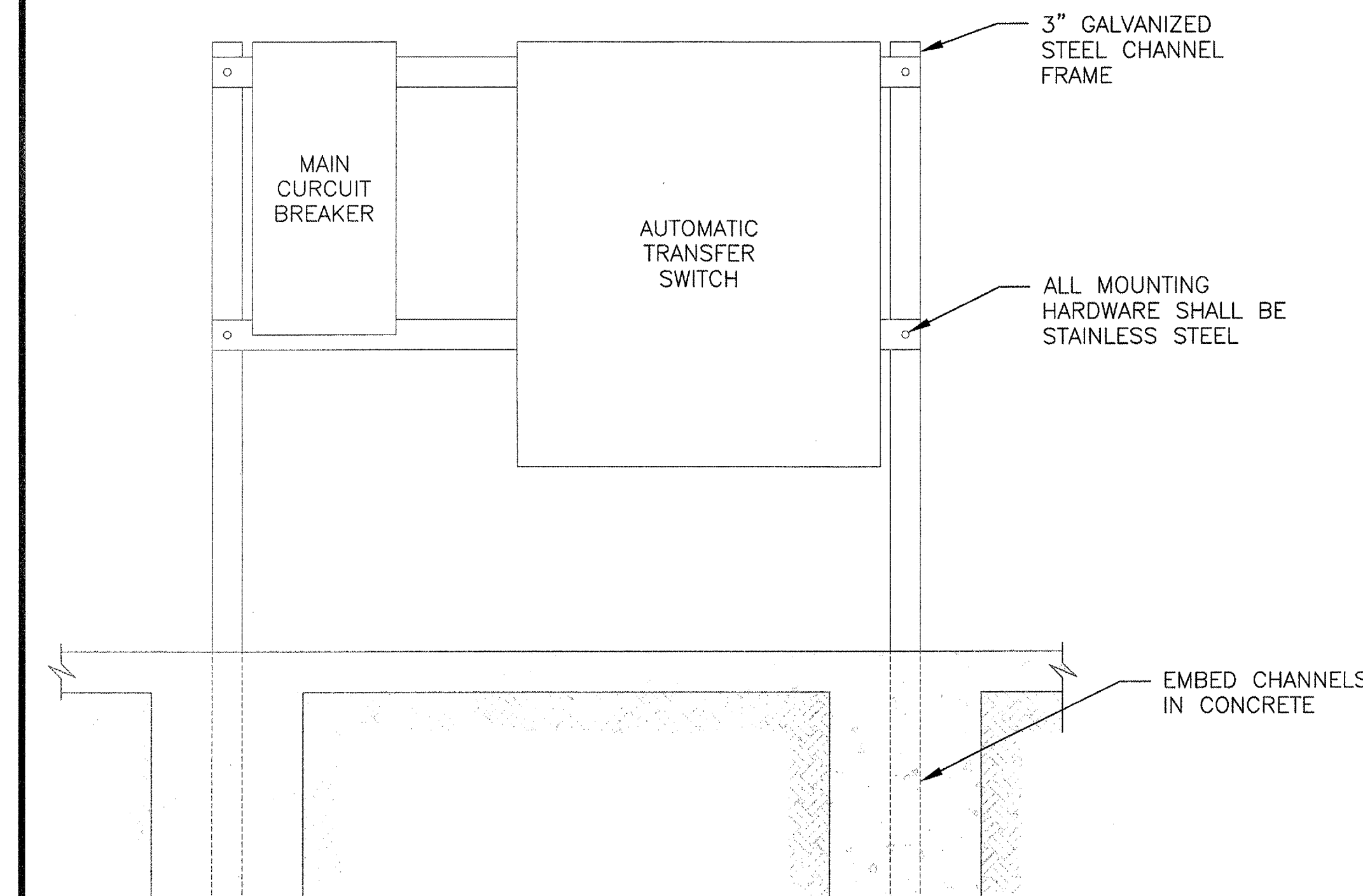
LIFT STATION PLAN VIEW

SHEET NO.  
**E-2**

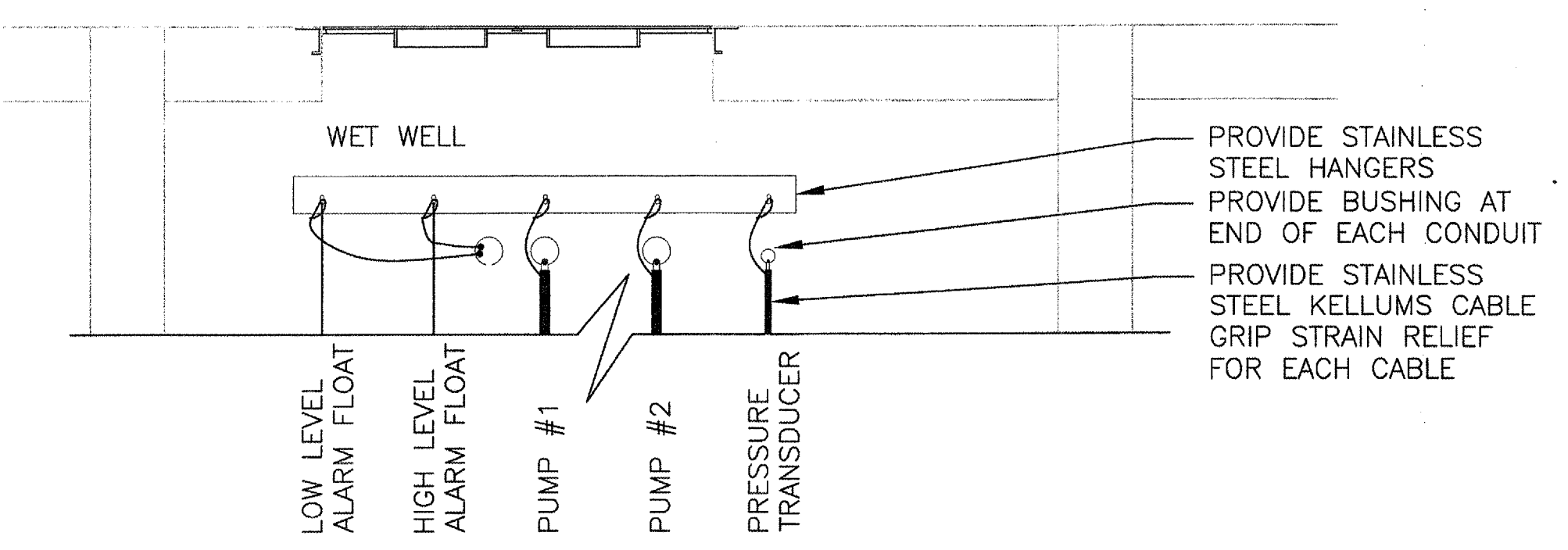


- 1 4 #1/0 IN 1-1/2" C TO UTILITY SERVICE POLE ROUTE 30" BELOW GRADE
- 2 4 #1/0 & 1 #6 CU. GND IN 1" GRS
- 3 4 #1/0 & 1 #6 CU. GND IN 1" GRS
- 4 2" GRS FOR PUMP #2 CABLE
- 5 2" GRS FOR PUMP #1 CABLE
- 6 1" GRS FOR PRESSURE TRANSDUCER CABLE
- 7 1 #2 IN 3/4" C TO GROUND ELECTRODE
- 8 10 #14 IN 3/4" C TO ARTU
- 9 2 #12 & 1 #12 CU. GND IN 3/4" C TO SITE LIGHT
- 10 4 #1/0 & 1 #6 GND IN 1-1/4" C TO GENERATOR
- 11 7 #14 IN 3/4" C TO GENERATOR CONTROL PANEL
- 12 2 #12 & 1 #12 GND IN 3/4" C TO GEN. BATTERY CHARGER
- 13 2 #12 & 1 #12 GND IN 3/4" C TO GEN. JACKET WATER HEATER
- 14 10 #14 IN 3/4" C TO ARTU FOR GENERATOR TROUBLE ALARMS AND CONTROL.
- 15 1" GRS FOR ANTENNA CABLE
- 16 20 LF #2 BARE CU. 30" BELOW GRADE FOR GROUND ELECTRODE. ALL CONNECTIONS SHALL BE BY EXOTHERMAL WELDS
- 17 5/8" x 10'-0" CU. CLAD STEEL DRIVEN GROUND ROD. PROVIDE 1 ROD EVERY 10'-0" IN LENGTH. CONNECT WITH EXOTHERMAL WELDS - 3 REQUIRED.
- 18 1" GRS FOR FLOAT SWITCH CABLES
- 19 2#12 & 1#12 GND IN 3/4" C FOR ODOR CONTROL MOTOR
- 20 2#12 & 1#12 GND IN 3/4" C FOR HEAT TAPE RECEPTACLE AT RPZ

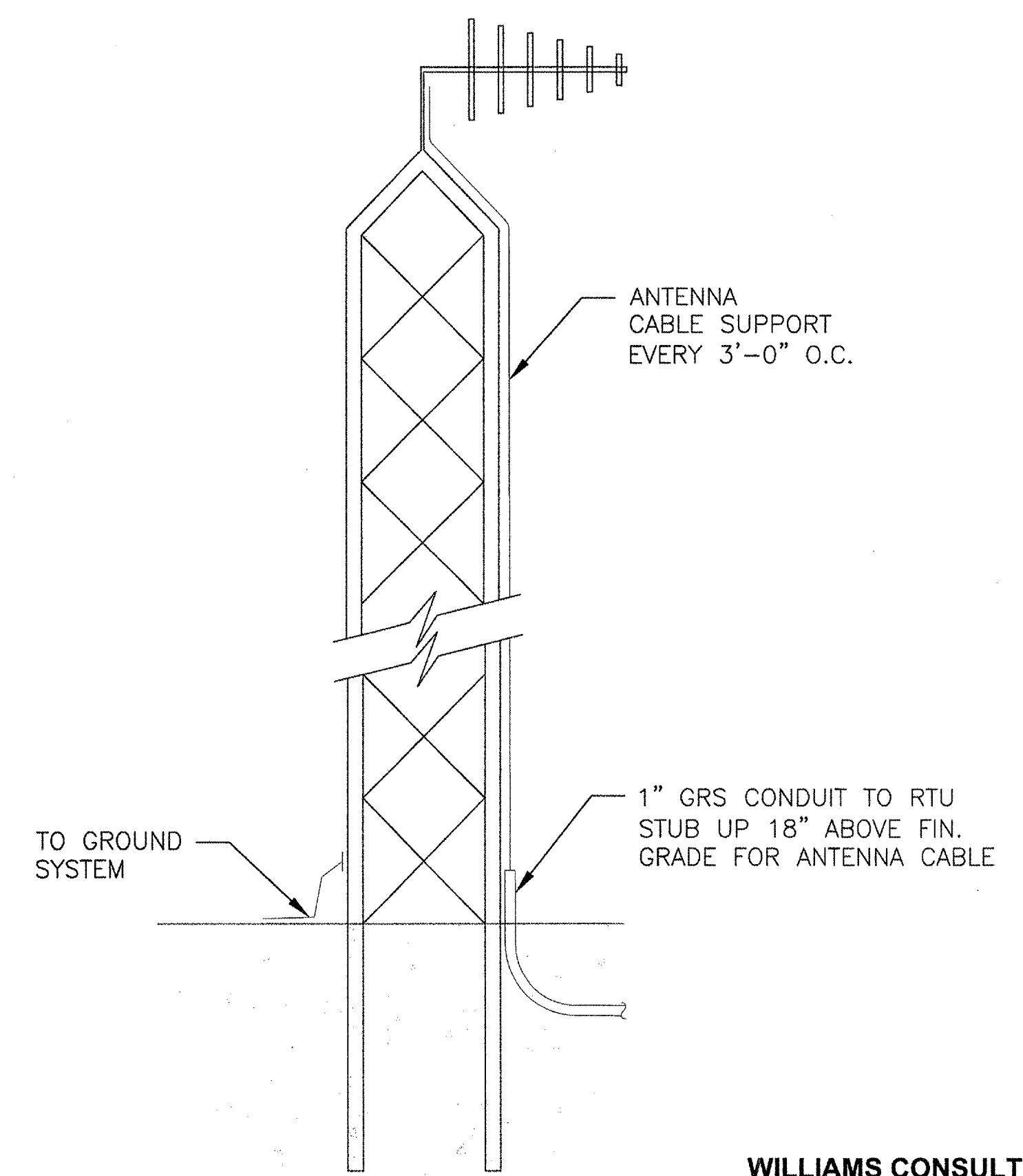
**VALVE VAULT & WET WELL TOP PLAN**  
SCALE: 1/4" = 1'-0"



**MAIN C.B. & A.T.S. MOUNTING**  
NOT TO SCALE



**PUMP CABLE SUPPORT DETAIL**  
NOT TO SCALE



**ANTENNA MAST AND ANTENNA MOUNTING**  
NOT TO SCALE

**WILLIAMS CONSULTING ENGINEERING, PC**  
901 Pinehurst Cove,  
Woodstock, Georgia 30188  
Phone: (770) 926-1239