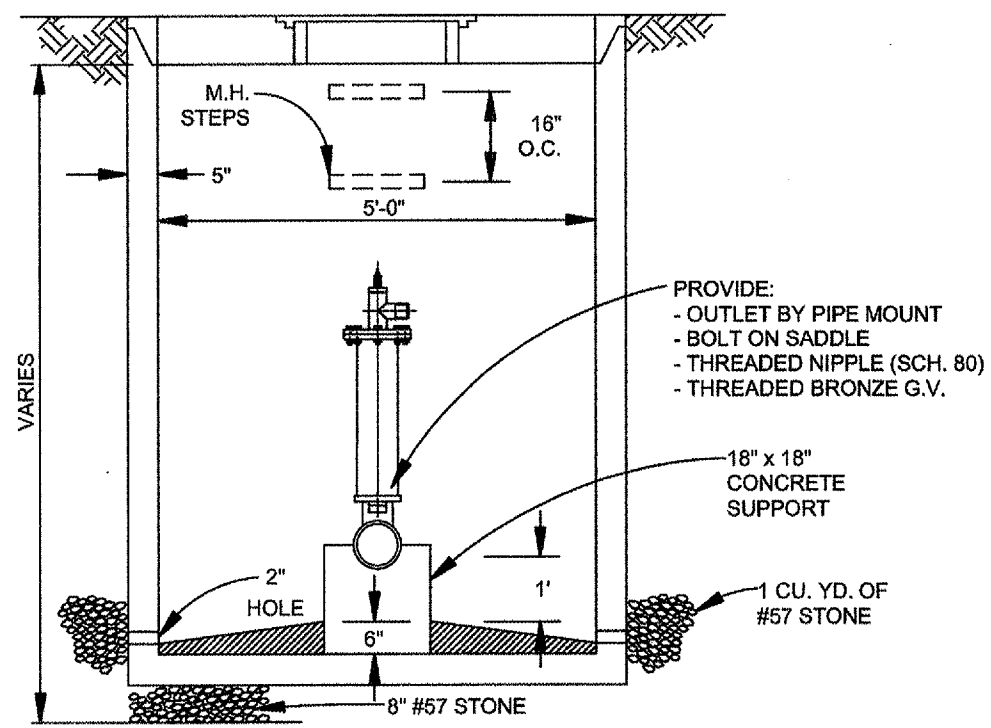


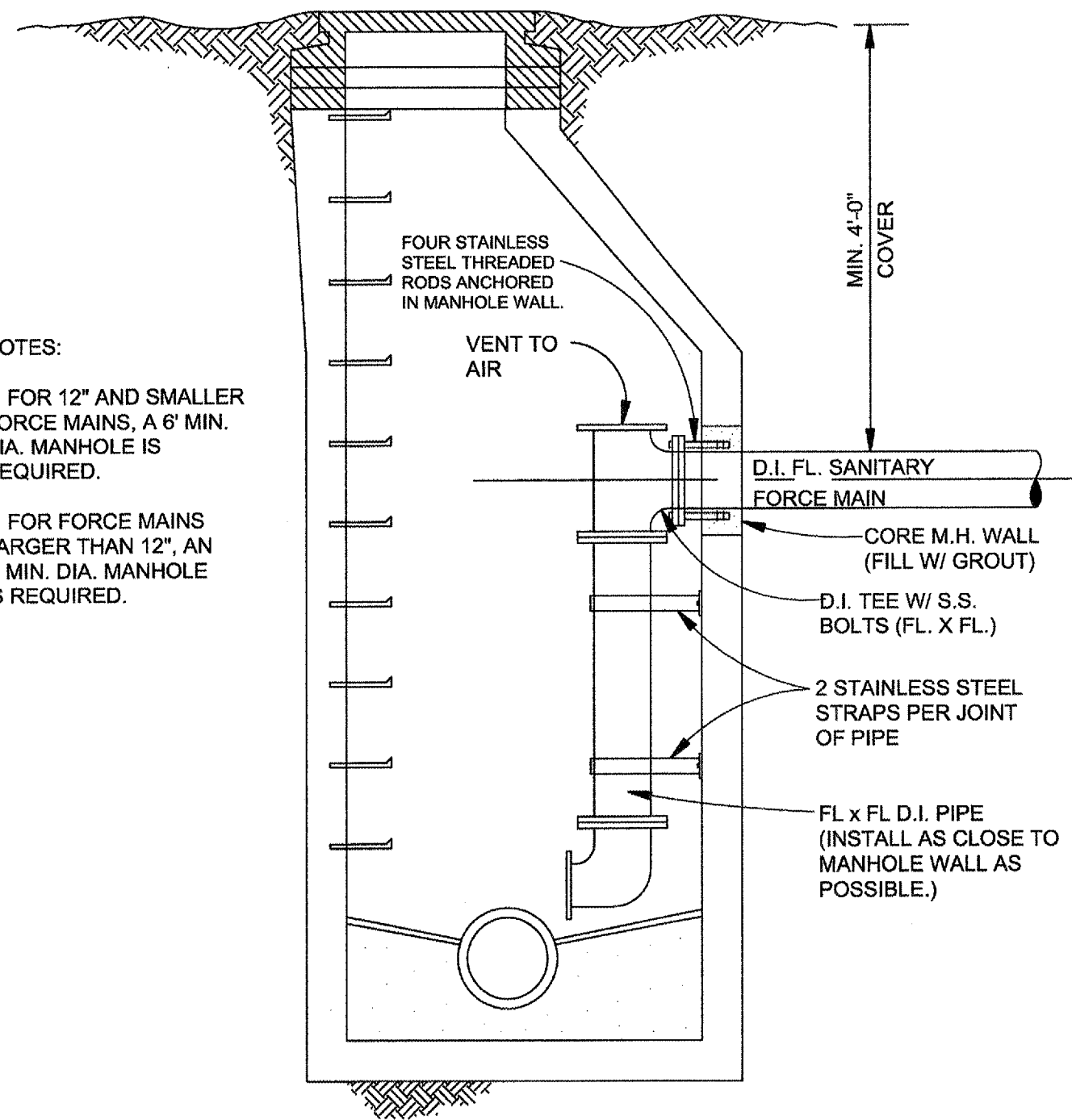
PLAN

- NOTES:
1. NO PIPE JOINTS ALLOWED WITHIN MANHOLE.
 2. ALL MANHOLES IN ROAD RIGHT-OF-WAY SHALL BE FLUSH WITH GRADE.



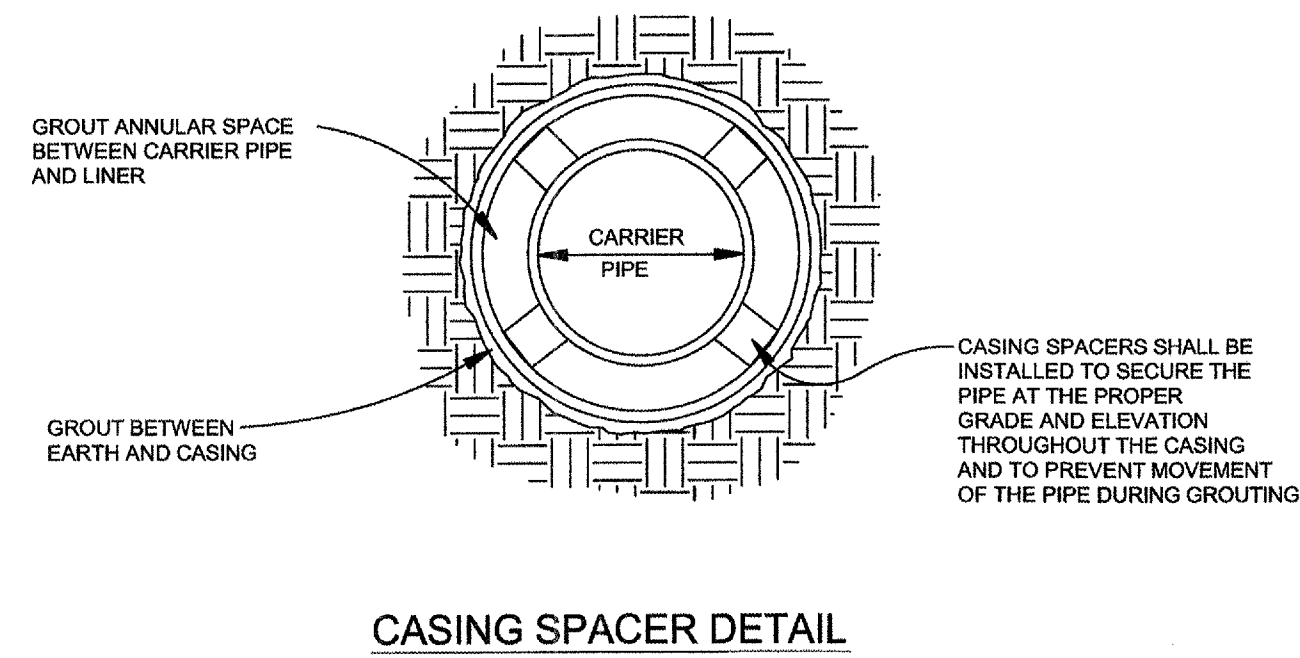
SECTION

SEWER AIR & VACUUM VALVE ASSEMBLY

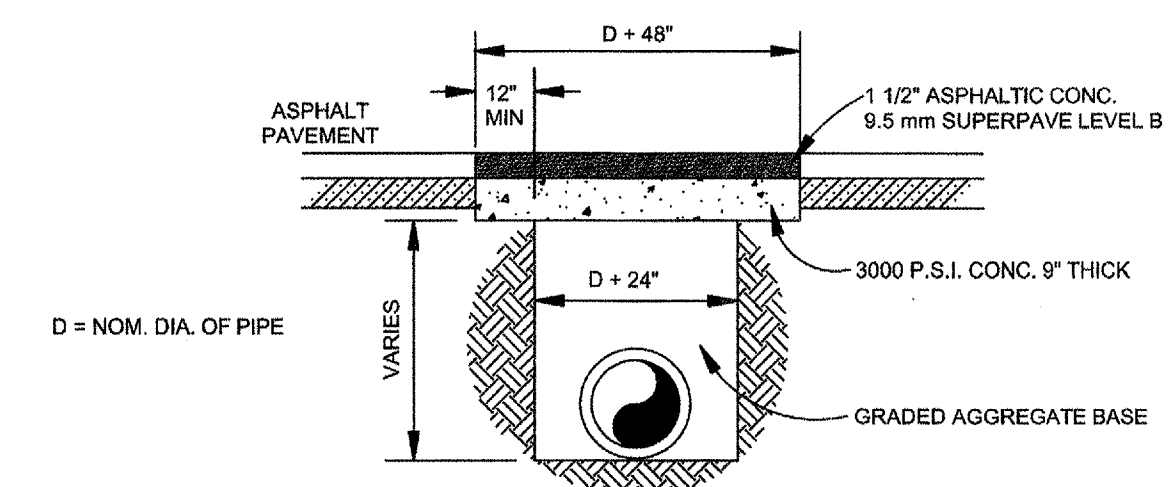


- NOTES:
1. FOR 12" AND SMALLER FORCE MAINS, A 6" MIN. DIA. MANHOLE IS REQUIRED.
 2. FOR FORCE MAINS LARGER THAN 12", AN 8" MIN. DIA. MANHOLE IS REQUIRED.

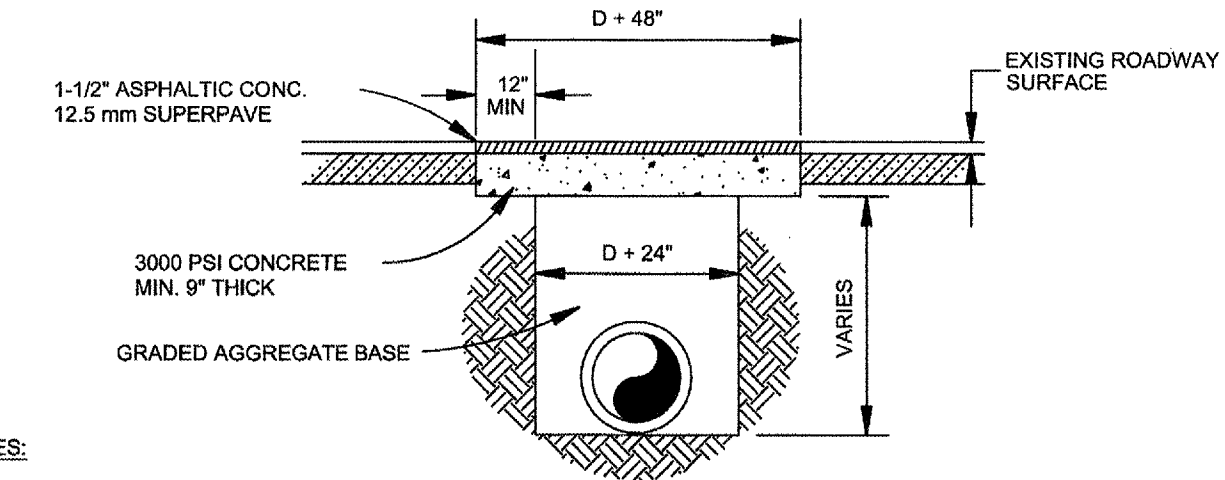
FORCE MAIN CONNECTION TO EXISTING MANHOLE



CASING SPACER DETAIL

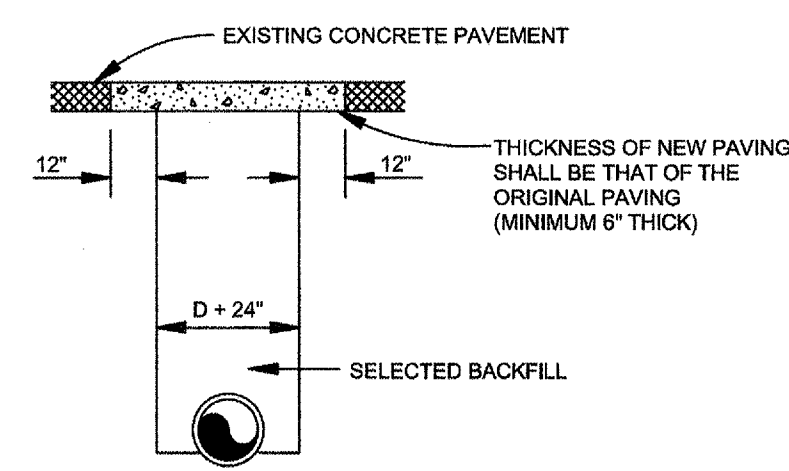


STATE OR STATE-AID ROADS

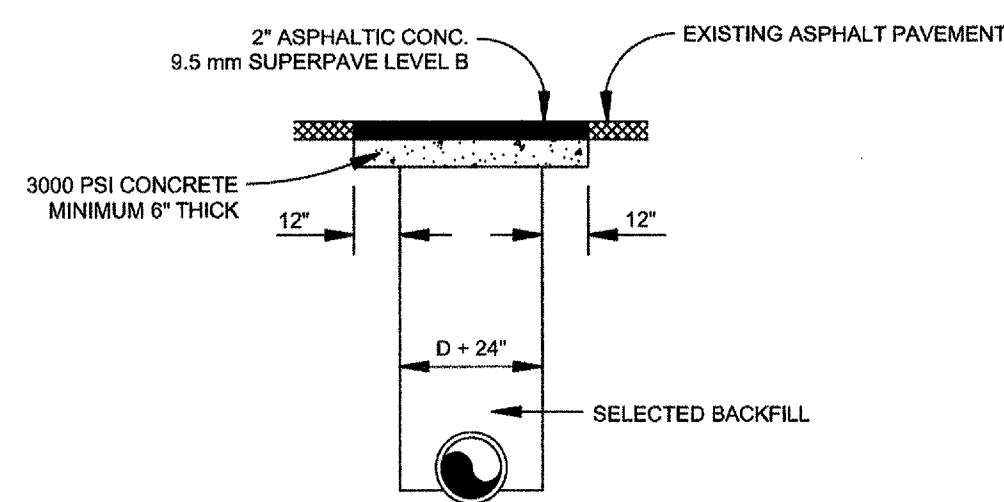


COUNTY ROADS

- NOTES:
1. PERMISSION MUST BE OBTAINED FROM CHEROKEE COUNTY TO OPEN CUT EXISTING ROADS.
 2. ROADWAYS WILL GENERALLY BE BORED OR TUNNELED FROM DITCH LINE TO DITCH LINE.
 3. IF CONCRETE PAVEMENT, REPLACE WITH ORIGINAL THICKNESS (MINIMUM 8"), FLUSH WITH EXISTING PAVEMENT.
 4. COMPACTION REQUIREMENTS: 95% STD. PROCTOR FROM PIPE BEDDING TO 1' BELOW GRADE. 100% STD. PROCTOR FOR TOP 1' OF TRENCH.

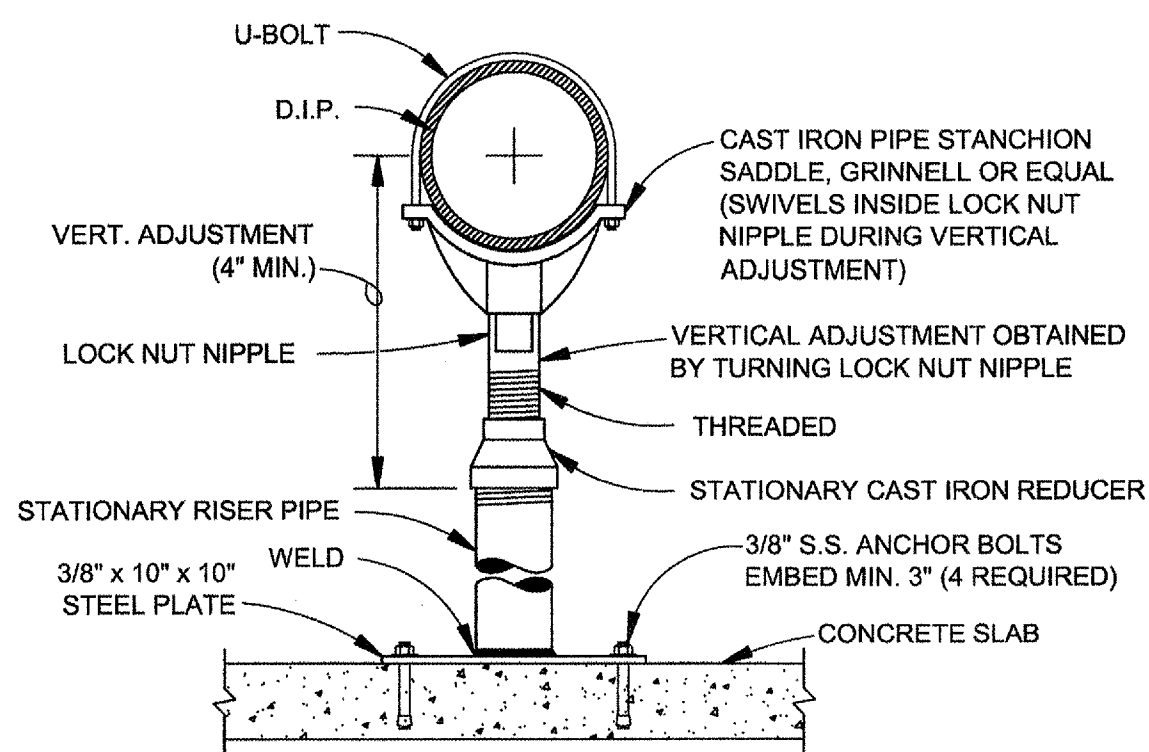


CONCRETE DRIVEWAY



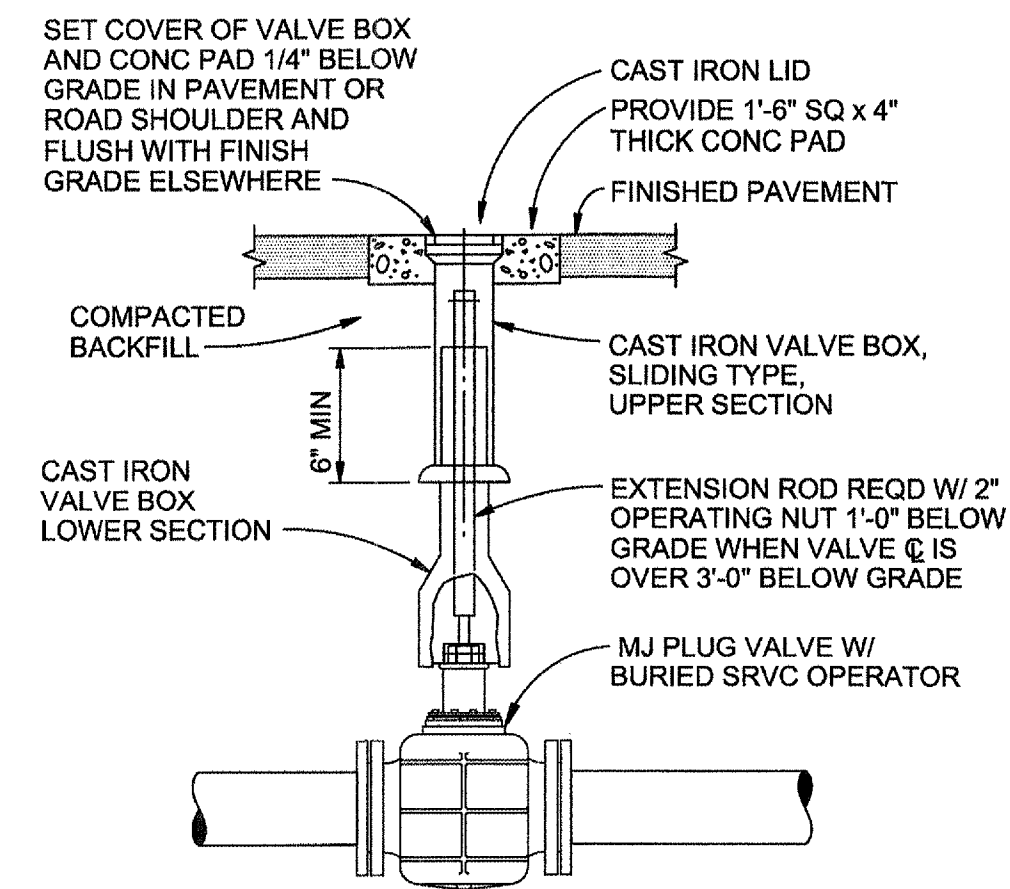
ASPHALT DRIVEWAY

- NOTES:
1. BACKFILL TO BE COMPACTED AS DIRECTED IN SPECIFICATIONS.
 2. D = NOMINAL PIPE DIAMETER
 3. COMPACTION REQUIREMENTS: 95% STD. PROCTOR FROM PIPE BEDDING TO 1' BELOW GRADE. 100% STD. PROCTOR FOR TOP 1' OF TRENCH.



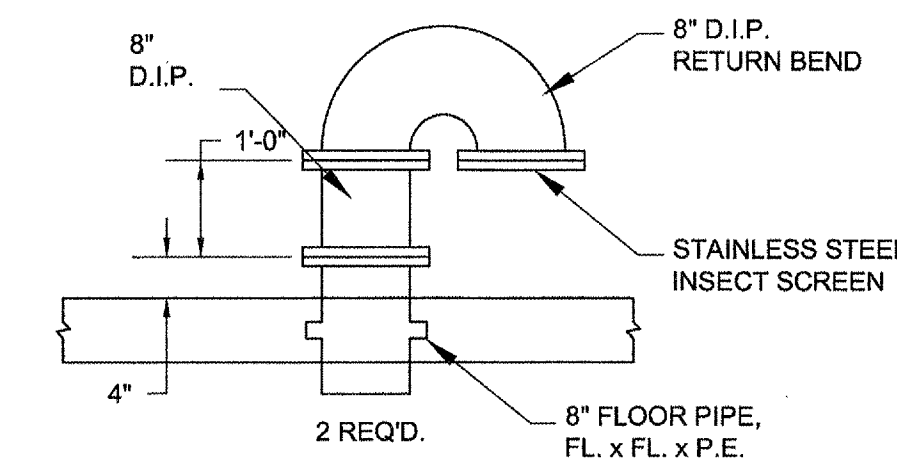
- NOTES:
1. LOCK NUT NIPPLE AND RISER PIPE SIZES TO BE IN ACCORDANCE WITH MANUFACTURER'S SPECIFICATIONS FOR SIZE OF PIPE BEING SUPPORTED.
 2. PIPE SUPPORTS SHALL BE SANDBLASTED, PRIMED AND PAINTED IN ACCORDANCE WITH THE SPECIFICATIONS.

ADJUSTABLE PIPE SUPPORT



BURIED PLUG VALVE AND BOX DETAIL

NTS



VENT DETAIL

NTS



ATKINS

192 Anderson Street, Suite 150
Marietta, Ga 30060
P: 770-422-1902 F: 770-426-5316

DATE	REVISION

PROJ. NO.: 100034005	DESIGNED BY: W.F.L.	CHECKED BY: W.F.L.	APPROVED BY: W.F.L.	DATE: AUGUST, 2013	SCALE: NTS
	DRAWN BY: M.R.T.				

CHEROKEE COUNTY WATER & SEWERAGE AUTHORITY
HOLLY SPRINGS
DOWNTOWN SANITARY SEWER SYSTEM

SEWER DETAILS

SHEET NO.
D-03