

COBB COUNTY WATER SYSTEM

Customer Services Facility
660 South Cobb Drive
Marietta, Georgia 30060-3105
770-419-6200
www.cobbwater.org

Judy B. Jones, P.E.
Director

Divisions:

Accounting
Communications & Education
Customer Services
Engineering & Records
Environmental Compliance
Stormwater Management
System Maintenance
Water Protection

November 4, 2020

To: Plan Holders

Re: **Addendum No. 2**

FY21 MULTIPLE PUMP STATIONS
PROJECTS Program No. S5036

NOTIFICATION TO BIDDERS

November 11 is an official Cobb County holiday and all County offices will be closed on that date. Please plan accordingly for delivery of your bid responses as no bids will be accepted on November 11, 2020. Bids may be delivered prior to that date or on the Bid Opening date of November 12, 2020 before 12:00 Noon.

The following addition/changes modify the Contract Documents for the project "FY21 Multiple Pump Stations Projects", dated September 25, 2020. The receipt of this addendum must be noted in the appropriate location on the bid form that is submitted to the Purchasing Department.

Part A - The additions/changes to the Contract Documents are as follows:

1. Reference Drawings:

The following "Drawings for S5036 FY21 Multiple Pump Stations Projects" have been reissued. Discard the previously-issued drawings and replace with the new version.

- a. DWG 45-C-01; Sheet 16 of 52
- b. DWG 45-E-01; Sheet 17 of 52
- c. DWG 45-E-02; Sheet 18 of 52
- d. DWG 50-C-01; Sheet 24 of 52
- e. DWG 50-E-01; Sheet 25 of 52
- f. DWG 55-C-01; Sheet 28 of 52
- g. DWG 55-E-01; Sheet 30 of 52
- h. DWG 55-E-02; Sheet 31 of 52
- i. DWG 60-C-01; Sheet 37 of 52
- j. DWG 60-E-01; Sheet 38 of 52
- k. DWG 65-C-01; Sheet 41 of 52
- l. DWG 65-E-01; Sheet 42 of 52
- m. DWG 70-C-01; Sheet 45 of 52
- n. DWG 70-E-01; Sheet 46 of 52
- o. DWG 75-C-01; Sheet 49 of 52
- p. DWG 75-E-01; Sheet 50 of 52

Addendum No. 2
FY21 MULTIPLE PUMP STATIONS PROJECTS
Program No. S5036
November 4, 2020
Page 2 of 3

Part B – Responses to written questions submitted on or before November 3, 2020:

1. **Question:** Please see high lighted line on the attached file and confirm this requirement applies to this solicitation.

Response: Refer to paragraph 6 of the Bidder's Qualification Statement (page 0310-2).
Delete the following sentence in its entirety.

“A minimum of five years of active experience in fire hydrant maintenance and replacement is required.”

Sincerely,

COBB COUNTY WATER SYSTEM
Engineering and Records Division

Eric W. Olson

Eric W. Olson, P.E.
Division Manager



COBB COUNTY WATER SYSTEM

Customer Services Facility
660 South Cobb Drive
Marietta, Georgia 30060-3105
770-419-6200
www.cobbwater.org

Judy B. Jones, P.E.
Director

Divisions:

Accounting
Communications & Education
Customer Services
Engineering & Records
Environmental Compliance
Stormwater Management
System Maintenance
Water Protection

ADDENDUM ACKNOWLEDGEMENT FORM

FY21 MULTIPLE PUMP STATIONS PROJECTS

PROGRAM NO. S5036

November 4, 2020

Addendum No. 2 hereby amends and/or modifies the bid documents as originally issued for this project. All proposers are subject to the provision of this addendum.

Receipt of this addendum MUST be acknowledged in the submitted bid. It is the Proposer's responsibility to ensure that they have all applicable addenda prior to submittal.

This acknowledgement form must be signed, dated, and included with our submitted bid after the cover page.

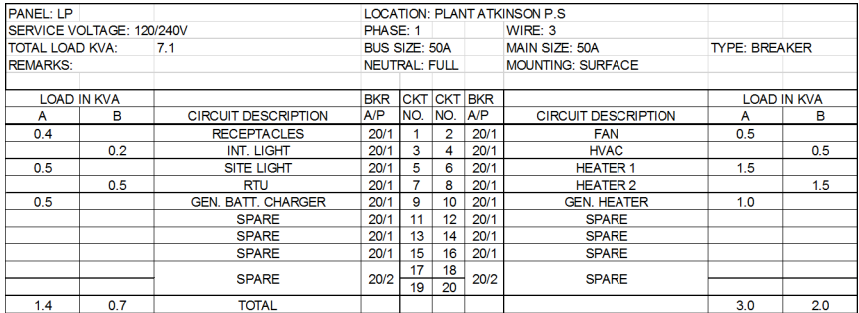
Company Name

Date

Signature

Printed Name





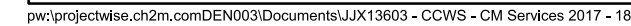

$$1'' = 1'-0''$$

1. EXISTING BUILDING TO BE REMOVED AND REPLACED WITH NEW BUILDING IN KIND ON THE EXISTING CONCRETE PAD. FAN, HEATER, INTERIOR LIGHT, AC UNIT, RECEPTACLES, AND ASSOCIATED SWITCHES WILL BE FURNISHED BY BUILDING VENDOR (KENCO PLASTIC CO.) CONTRACTOR SHALL PROVIDE NEW CONDUITS AND CONDUCTORS.
2. EXISTING EQUIPMENT AND SUPPORTS TO REMAIN. DISCONNECT THE EXISTING UNISTRUT FROM THE WALLS, PROVIDE TEMPORARY SUPPORT TO ENSURE EQUIPMENT AND ASSOCIATED CONDUITS ARE STABLE AND PROTECTED. RECONNECT TO NEW BUILDING STRUCTURE.
3. COORDINATE WITH BUILDING VENDOR (KENCO PLASTIC CO.) TO ENSURE THE LOCATION FOR NEW AC, HEATER, FAN, AND LOUVERS DO NOT CONFLICT WITH EXISTING BUILDING LAYOUT AND EQUIPMENT THAT ARE TO BE REMAIN.
4. REMOVE THE EXISTING ATS AND INSTALL NEW ATS IN THE SAME LOCATION. CONTRACTOR SHALL FIELD VERIFY AND RECORD ALL THE EXISTING CONDUITS AND CONDUCTORS TO AND FROM EXISTING ATS PRIOR TO REPLACE IT WITH NEW ATS. BOUND NEW ATS TO GROUND LOOP.
5. CONTRACTOR SHALL REUSE THE EXISTING CONDUITS. THE EXISTING CONDUCTORS THAT ARE CURRENTLY INSTALLED SHALL BE DEMOLISHED. ADDITIONALLY, THE CONTRACTOR SHALL PROVIDE AND INSTALL NEW CONDUCTORS WITHIN THE EXISTING CONDUITS AS SHOWN ON DRAWINGS. CONTRACTOR SHALL BE RESPONSIBLE FOR ALL MODIFICATIONS REQUIRED TO CONDUITS.
6. SEE DRAWING 45-E-03 FOR ONE LINE DIAGRAM.
7. BOND NEW BUILDING, ALL RACK EQUIPMENT, AND SUPPORT TO GROUND LOOP.

8. PROVIDE A 10A 40 BC FIRE EXTINGUISHER WITH A WEATHER PROOF ENCLOSURE MOUNTED TO OUTSIDE WALL OF BUILDING. DEMOLISH ANY EXISTING FIRE EXTINGUISHERS AT SITE.

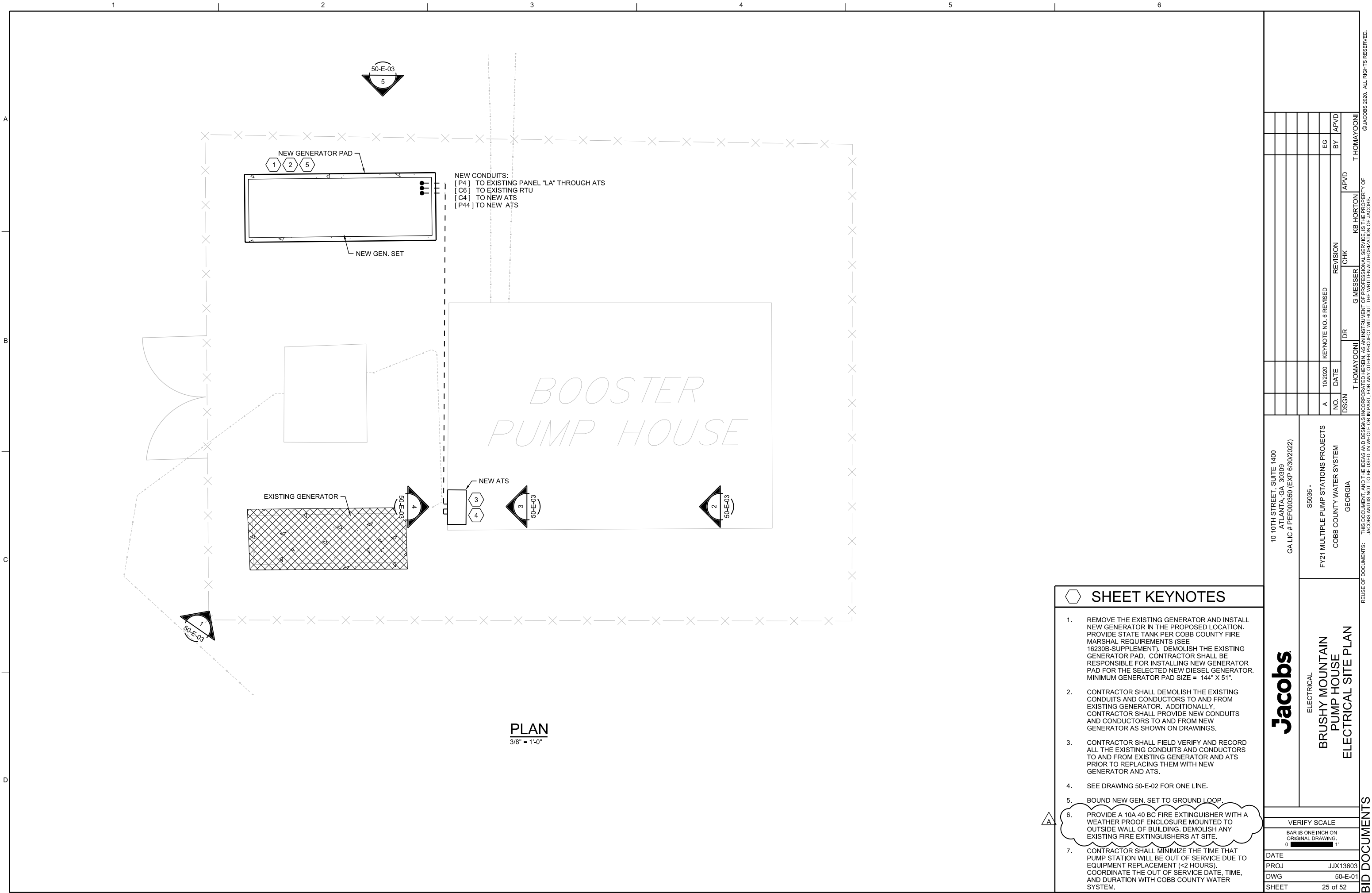
9. CONTRACTOR SHALL MINIMIZE THE TIME THAT PUMP STATION WILL BE OUT OF SERVICE DUE EQUIPMENT REPLACEMENT (<2 HOURS). COORDINATE THE OUT OF SERVICE DATE, TIME , AND DURATION WITH COBB COUNTY WATER SYSTEM.

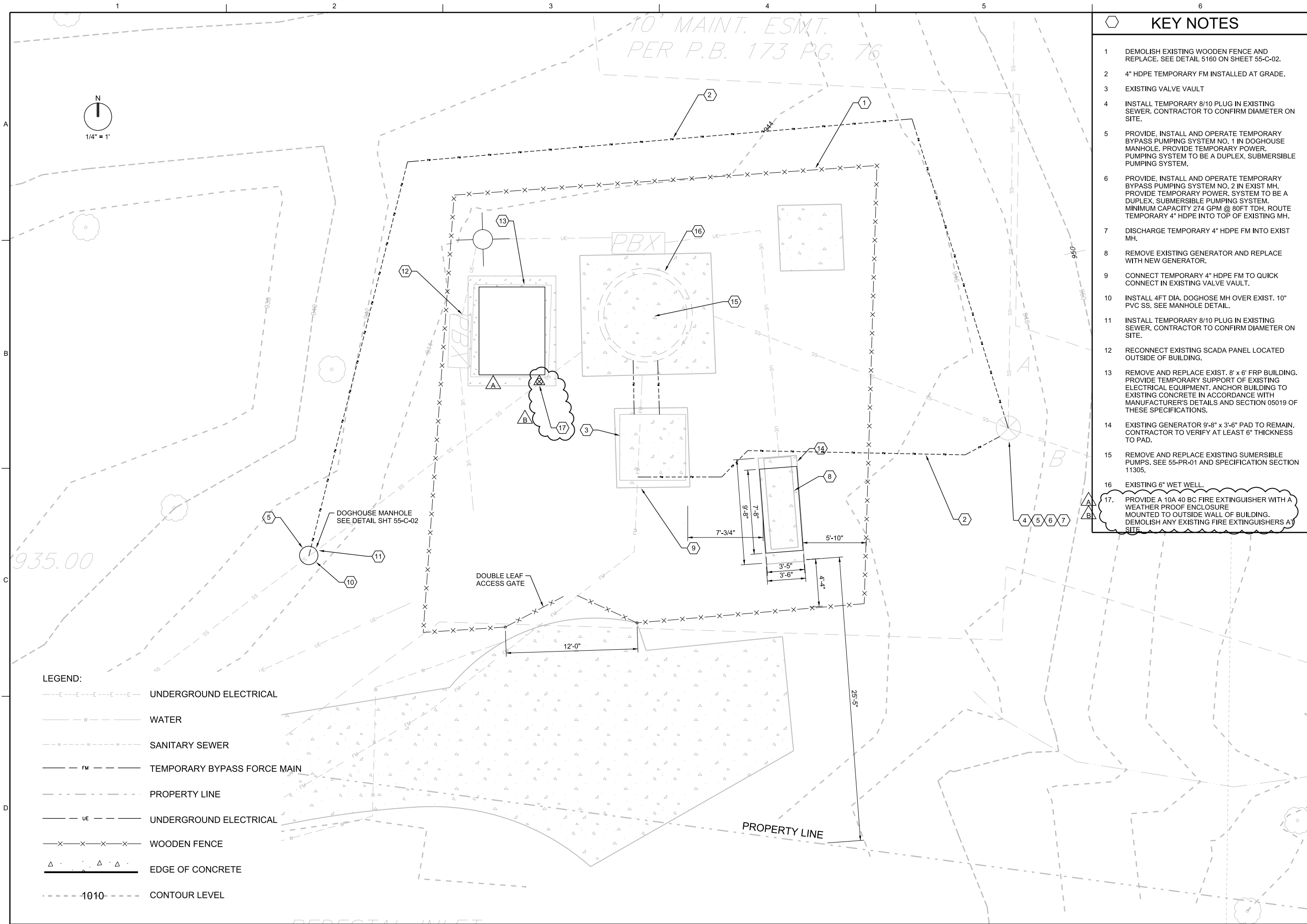
		10 10TH STREET, SUITE 1400 ATLANTA, GA 30309 GA LIC # PEF000350 (EXP 6/30/2022)													
		ELECTRICAL PLANT ATKINSON ROAD PUMP STATION ELECTRICAL EQUIPMENT BUILDING LAYOUT AND PANEL SCHEDULE		S5036 - FY21 MULTIPLE PUMP STATIONS PROJECTS COBB COUNTY WATER SYSTEM GEORGIA											
VERIFY SCALE BAR IS ONE INCH ON ORIGINAL DRAWING 0  1"															
DATE															
PROJ		JJX13603													
DWG		45-E-02													
SHEET		18 of 52													

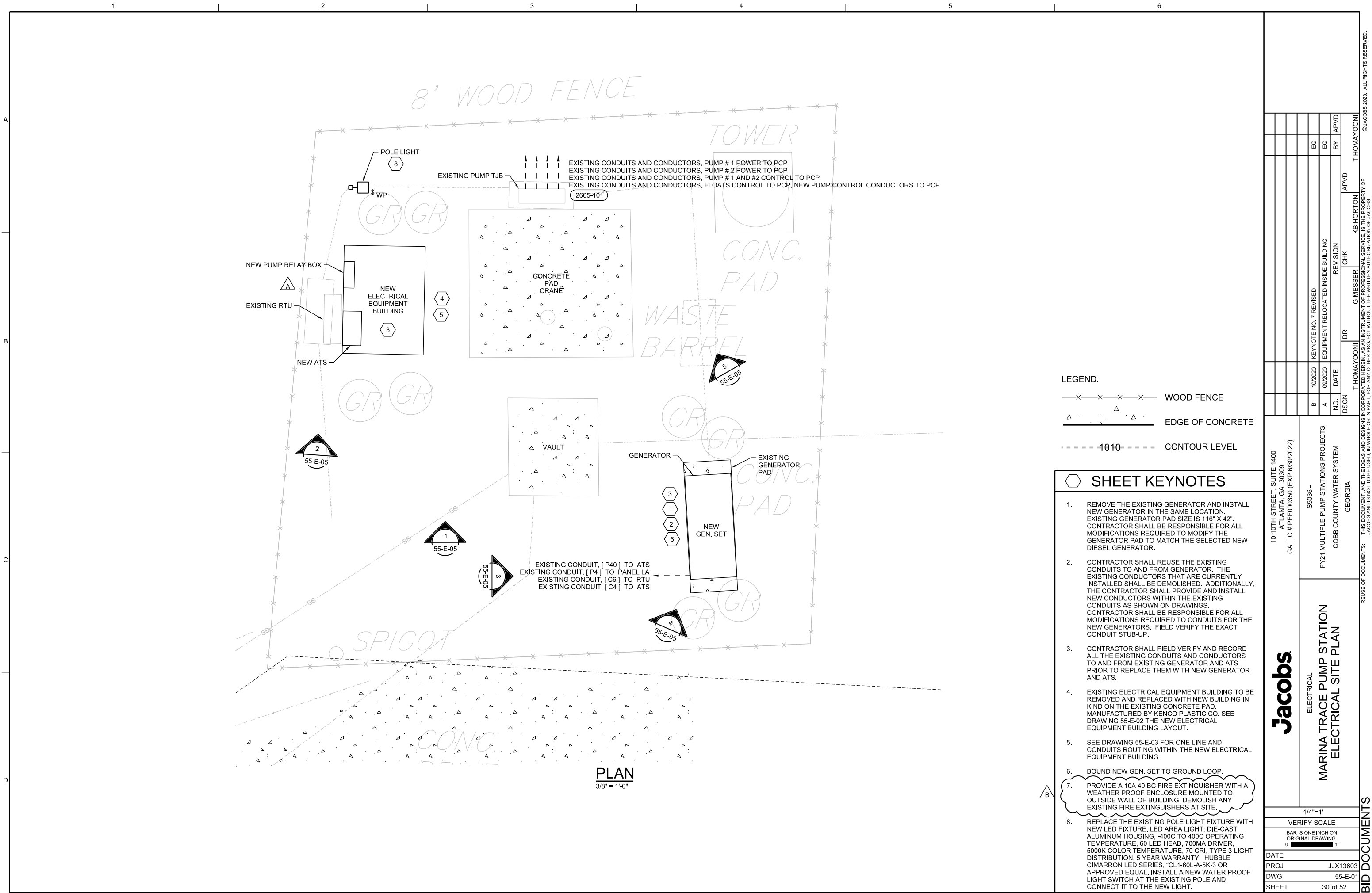


REUSE OF DOCUMENTS:	THIS DOCUMENT, AND THE IDEAS AND DESIGNS INCORPORATED HEREIN, AS AN INSTRUMENT OF PROFESSIONAL SERVICE, IS THE PROPERTY OF JACOBS AND IS NOT TO BE USED, IN WHOLE OR IN PART, FOR ANY OTHER PROJECT WITHOUT THE WRITTEN AUTHORIZATION OF JACOBS.	DATE	BY	FOR	FILED

BID DOCUMENTS







- LEGEND:
- WOOD FENCE
 - EDGE OF CONCRETE
 - CONTOUR LEVEL

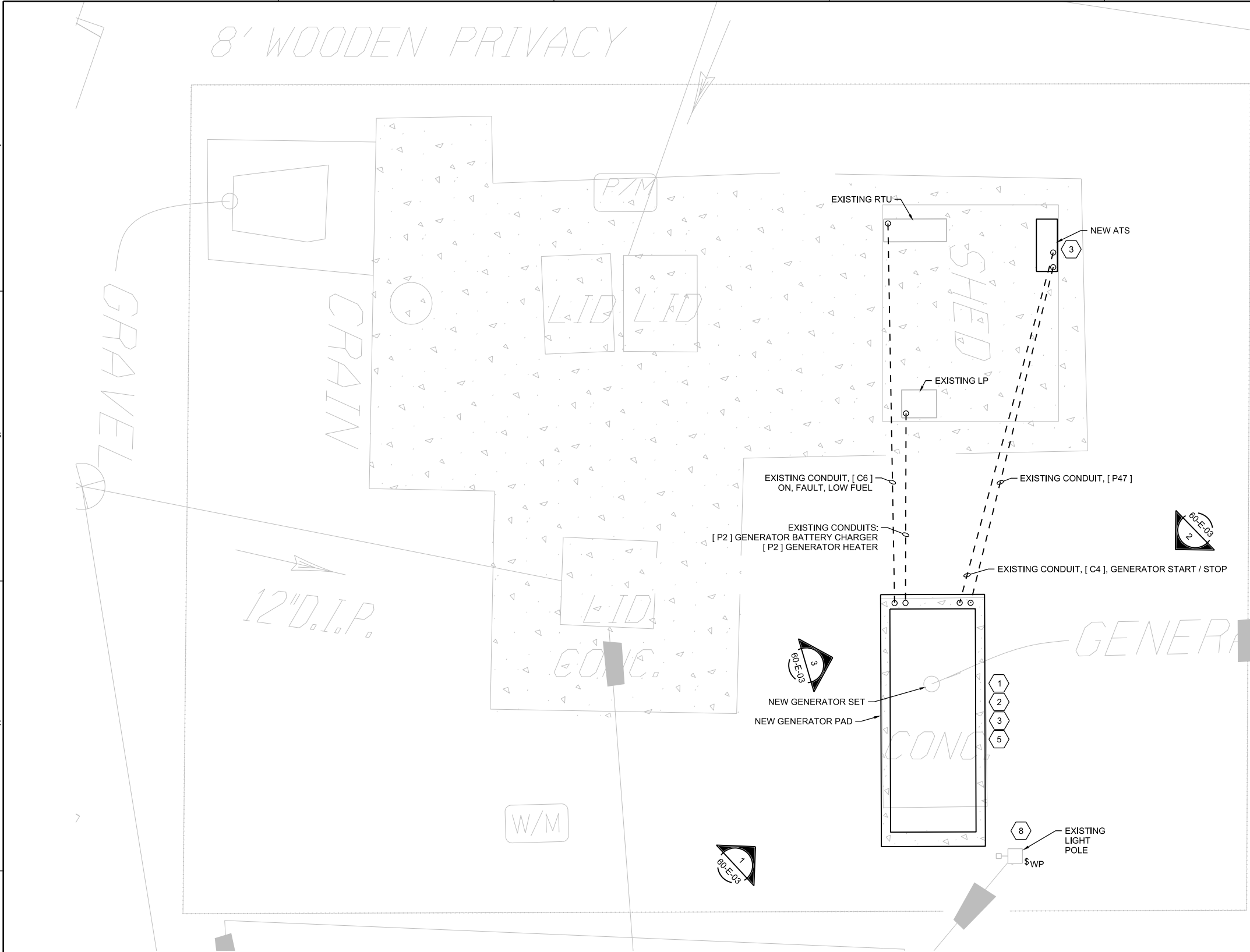
SHEET KEYNOTES

- REMOVE THE EXISTING GENERATOR AND INSTALL NEW GENERATOR IN THE SAME LOCATION. EXISTING GENERATOR PAD SIZE IS 116" X 42". CONTRACTOR SHALL BE RESPONSIBLE FOR ALL MODIFICATIONS REQUIRED TO MODIFY THE GENERATOR PAD TO MATCH THE SELECTED NEW DIESEL GENERATOR.
- CONTRACTOR SHALL REUSE THE EXISTING CONDUITS TO AND FROM GENERATOR. THE EXISTING CONDUITS THAT ARE CURRENTLY INSTALLED SHALL BE DEMOLISHED. ADDITIONALLY, THE CONTRACTOR SHALL PROVIDE AND INSTALL NEW CONDUITS WITHIN THE EXISTING CONDUITS AS SHOWN ON DRAWINGS. CONTRACTOR SHALL BE RESPONSIBLE FOR ALL MODIFICATIONS REQUIRED TO CONDUITS FOR THE NEW GENERATORS. FIELD VERIFY THE EXACT CONDUIT STUB-UP.
- CONTRACTOR SHALL FIELD VERIFY AND RECORD ALL THE EXISTING CONDUITS AND CONDUCTORS TO AND FROM EXISTING GENERATOR AND ATS PRIOR TO REPLACE THEM WITH NEW GENERATOR AND ATS.
- EXISTING ELECTRICAL EQUIPMENT BUILDING TO BE REMOVED AND REPLACED WITH NEW BUILDING IN KIND ON THE EXISTING CONCRETE PAD. MANUFACTURED BY KENCO PLASTIC CO. SEE DRAWING 55-E-02 THE NEW ELECTRICAL EQUIPMENT BUILDING LAYOUT.
- SEE DRAWING 55-E-03 FOR ONE LINE AND CONDUITS ROUTING WITHIN THE NEW ELECTRICAL EQUIPMENT BUILDING.
- BOUND NEW GEN. SET TO GROUND LOOP.
- PROVIDE A 10A 40 BC FIRE EXTINGUISHER WITH A WEATHER PROOF ENCLOSURE MOUNTED TO OUTSIDE WALL OF BUILDING. DEMOLISH ANY EXISTING FIRE EXTINGUISHERS AT SITE.
- REPLACE THE EXISTING POLE LIGHT FIXTURE WITH NEW LED FIXTURE. LED AREA LIGHT, DIE-CAST ALUMINUM HOUSING, -400C TO 400C OPERATING TEMPERATURE, 60 LED HEAD, 700MA DRIVER, 5000K COLOR TEMPERATURE, 70 CRI, TYPE 3 LIGHT DISTRIBUTION, 5 YEAR WARRANTY. HUBBLE CIMARRON LED SERIES, "CL1-60L-A-5K-3 OR APPROVED EQUAL. INSTALL A NEW WATER PROOF LIGHT SWITCH AT THE EXISTING POLE AND CONNECT IT TO THE NEW LIGHT.

<div>JACOBS</div>		10 10TH STREET, SUITE 1400 ATLANTA, GA 30309 GA LIC # PEF000350 (EXP 6/30/2022)		S5036 - FY21 MULTIPLE PUMP STATIONS PROJECTS COBB COUNTY WATER SYSTEM GEORGIA		B 10/2020 KEYNOTE NO. 7 REVISED		A 09/2020 EQUIPMENT RELOCATED INSIDE BUILDING		EG EG					
MARINA TRACE PUMP STATION ELECTRICAL SITE PLAN		ELECTRICAL													
1/4"=1'		VERIFY SCALE													
BAR IS ONE INCH ON ORIGINAL DRAWING.		0 1"													
DATE															
PROJ		JJX13603													
DWG		55-E-01													
SHEET		30 of 52													







PLAN
3/8" = 1'-0"

- LEGEND:
- WOODEN FENCE
 - EDGE OF CONCRETE
 - CONTOUR LEVEL

SHEET KEYNOTES

- REMOVE THE EXISTING GENERATOR AND INSTALL NEW GENERATOR IN THE SAME LOCATION. PROVIDE STATE TANK PER COBB COUNTY FIRE MARSHAL REQUIREMENTS. (SEE 16230B-SUPPLEMENT). EXISTING GENERATOR PAD SIZE IS 120" X 60". CONTRACTOR SHALL BE RESONSIBLE FOR REPLACING THE EXISTING GENERATOR PAD WITH NEW GENERATOR PAD FOR THE SELECTED NEW DIESEL GENERATOR. MINIMUM GENERATOR PAD SIZE = 144" X 51".
- CONTRACTOR SHALL REUSE THE EXISTING CONDUITS TO AND FROM GENERATOR. THE EXISTING CONDUCTORS THAT ARE CURRENTLY INSTALLED SHALL BE DEMOLISHED. ADDITIONALLY, THE CONTRACTOR SHALL PROVIDE AND INSTALL NEW CONDUCTORS WITHIN THE EXISTING CONDUITS AS SHOWN ON DRAWINGS. CONTRACTOR SHALL BE RESONSIBLE FOR ALL MODIFICATIONS REQUIRED TO CONDUITS FOR THE NEW GENERATORS. FIELD VERIFY THE CONDUITS TH EXACT CONDUIT STUB-UP.
- CONTRACTOR SHALL FIELD VERIFY AND RECORD ALL THE EXISTING CONDUITS AND CONDUCTORS TO AND FROM EXISTING GENERATOR AND ATS PRIOR TO REPLACING THEM WITH NEW GENERATOR AND ATS.
- SEE DRAWING 60-E-02 FOR ONE LINE AND CONDUITS ROUTING WITHIN THE ELECTRICAL EQUIPMENT BUILDING.
- BOUND NEW GEN. SET TO GROUND LOOP.
- PROVIDE A 10A 40 BC FIRE EXTINGUISHER WITH A WEATHER PROOF ENCLOSURE USE EXISTING ENCLOSURE IF IT MEETS CODE REQUIREMENT. DEMOLISH ANY EXISTING FIRE EXTINGUISHERS AT SITE.
- CONTRACTOR SHALL MINIMIZE THE THE TIME THAT PUMP STATION WILL BE OUT OF SERVICE DUE EQUIPMENT REPLACEMENT (<2 HOURS). COORDINATE THE OUT OF SERVICE DATE, TIME , AND DURATION WITH COBB COUNTY WATER SYSTEM.
- INSTALL A NEW WATER PROOF LIGHT SWITCH AT THE EXISTING POLE AND CONNECT IT TO THE EXISTING LIGHT.

JACOBS

ELECTRICAL

10 10TH STREET, SUITE 1400
ATLANTA, GA 30309
GA LIC # PEF000350 (EXP 6/30/2022)

ALLATOONA BEACH PUMP STATION
ELECTRICAL SITE PLAN

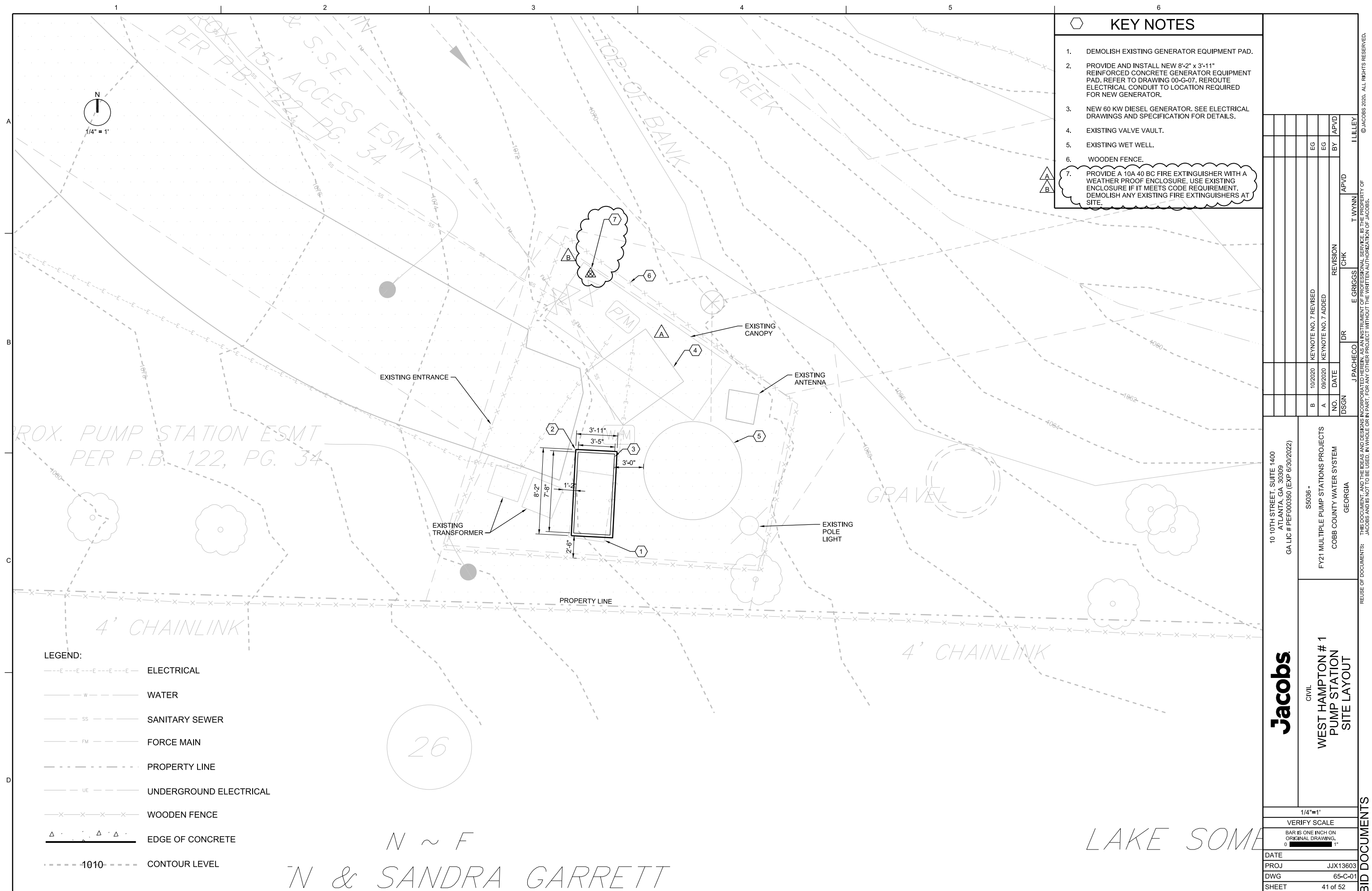
1/4"=1'
VERIFY SCALE
BAR IS ONE INCH ON ORIGINAL DRAWING.
DATE
PROJ JJX13603
DWG 60-E-01
SHEET 38 of 52

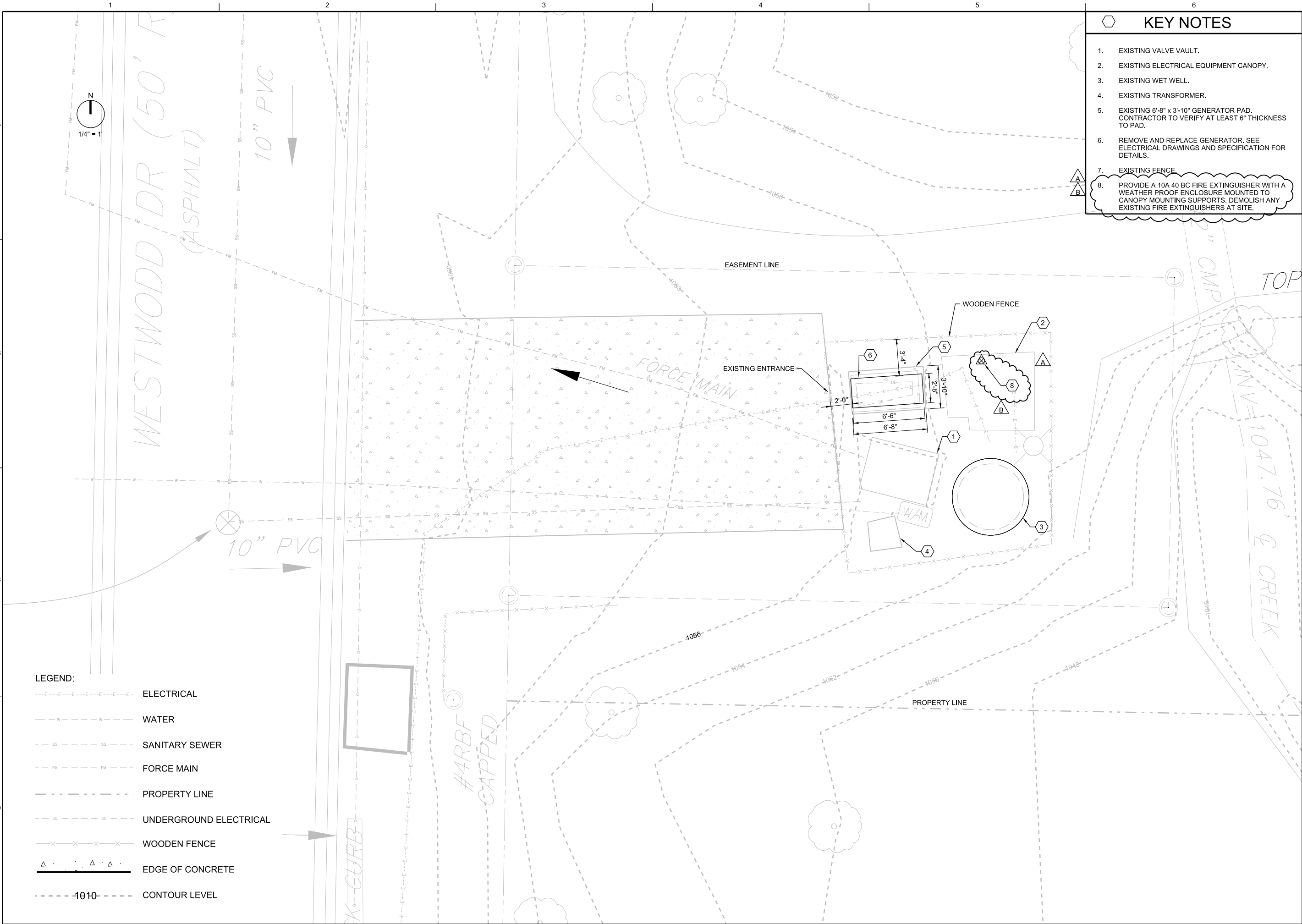
REUSE OF DOCUMENTS: THIS DOCUMENT, AND THE IDEAS AND DESIGNS INCORPORATED HEREIN, AS AN INSTRUMENT OF PROFESSIONAL SERVICE, IS THE PROPERTY OF JACOBS AND IS NOT TO BE USED, IN WHOLE OR IN PART, FOR ANY OTHER PROJECT WITHOUT THE WRITTEN AUTHORIZATION OF JACOBS.

10/2020
A
NO. DATE
KEYNOTE NO. 6 REVISED
EG
BY
APVD
T HOMAYOONI
DR
G MESSER
CHK
REVISION
KB HORTON
APVD
T HOMAYOONI

55036 -
FY21 MULTIPLE PUMP STATIONS PROJECTS
COBB COUNTY WATER SYSTEM
GEORGIA

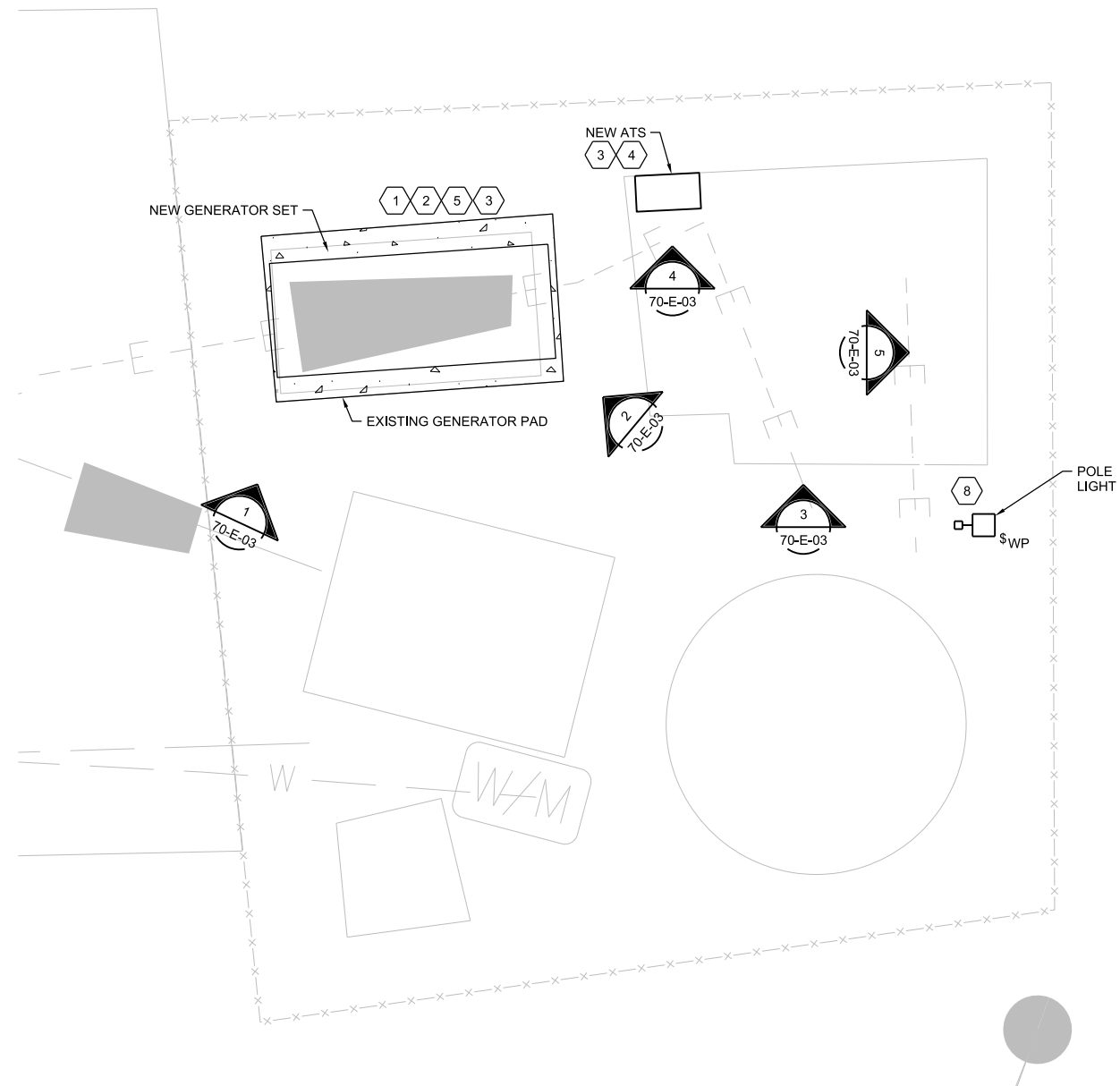
BID DOCUMENTS





- ### KEY NOTES
- EXISTING VALVE VAULT.
 - EXISTING ELECTRICAL EQUIPMENT CANOPY.
 - EXISTING WET WELL.
 - EXISTING TRANSFORMER.
 - EXISTING 6'-8" x 3'-10" GENERATOR PAD. CONTRACTOR TO VERIFY AT LEAST 6" THICKNESS TO PAD.
 - REMOVE AND REPLACE GENERATOR. SEE ELECTRICAL DRAWINGS AND SPECIFICATION FOR DETAILS.
 - EXISTING FENCE.
 - PROVIDE A 10A 40 BC FIRE EXTINGUISHER WITH A WEATHER PROOF ENCLOSURE MOUNTED TO CANOPY MOUNTING SUPPORTS. DEMOLISH ANY EXISTING FIRE EXTINGUISHERS AT SITE.

10 10TH STREET, SUITE 1400 ATLANTA, GA 30309 GA LIC # PEF000350 (EXP 6/30/2022)				J PACHICO E GRIGGS T WYNN I LILLEY			
FY21 MULTIPLE PUMP STATIONS PROJECTS COBB COUNTY WATER SYSTEM GEORGIA				NO. DATE DSGN DR			
S5036 - WEST HAMPTON # 2 PUMP STATION SITE LAYOUT				REVISION BY APVD			
DATE				CHK			
PROJ				APVD			
DWG				BY			
SHEET				EG			
1/4"=1'				EG			
VERIFY SCALE				EG			
BAR IS ONE INCH ON ORIGINAL DRAWING.				EG			
DATE				EG			
PROJ				EG			
DWG				EG			
SHEET				EG			
45 of 52				EG			
10 10TH STREET, SUITE 1400 ATLANTA, GA 30309 GA LIC # PEF000350 (EXP 6/30/2022)				EG			
FY21 MULTIPLE PUMP STATIONS PROJECTS COBB COUNTY WATER SYSTEM GEORGIA				EG			
S5036 - WEST HAMPTON # 2 PUMP STATION SITE LAYOUT				EG			
DATE				EG			
PROJ				EG			
DWG				EG			
SHEET				EG			
45 of 52				EG			



SHEET KEYNOTES

1. REMOVE THE EXISTING GENERATOR AND INSTALL NEW GENERATOR IN THE SAME LOCATION. EXISTING GENERATOR PAD SIZE IS 84" X 48". CONTRACTOR SHALL BE RESPONSIBLE FOR ALL MODIFICATIONS REQUIRED TO MODIFY THE EXISTING GENERATOR PAD FOR THE SELECTED NEW DIESEL GENERATOR.
2. CONTRACTOR SHALL REUSE THE EXISTING CONDUITS TO AND FROM GENERATOR. THE EXISTING CONDUCTORS THAT ARE CURRENTLY INSTALLED SHALL BE DEMOLISHED. ADDITIONALLY THE CONTRACTOR SHALL PROVIDE AND INSTALL NEW CONDUITS WITHIN THE EXISTING CONDUITS AS SHOWN ON DRAWINGS. CONTRACTOR SHALL BE RESPONSIBLE FOR ALL MODIFICATIONS REQUIRED TO CONDUITS FROM THE NEW GENERATORS FIELD VERIFY THE EXACT CONDUIT STUB-UP.
3. CONTRACTOR SHALL FIELD VERIFY AND RECORD ALL THE EXISTING CONDUITS AND CONDUCTORS TO AND FROM EXISTING GENERATOR AND ATS PRIOR TO REPLACING THEM WITH NEW GENERATOR AND ATS.
4. SEE DRAWING 70-E-02 FOR ONE LINE AND CONDUITS ROUTING WITHIN THE CONTROL ROOM.
5. BOUND NEW GENERATOR SET TO GROUND LOOP.
6. PROVIDE A 10A 40 BC FIRE EXTINGUISHER WITH A WEATHER PROOF ENCLOSURE MOUNTED TO CANOPY MOUNTING SUPPORTS. DEMOLISH ANY EXISTING FIRE EXTINGUISHERS AT SITE.
7. CONTRACTOR SHALL MINIMIZE THE TIME THAT PUMP STATION WILL BE OUT OF SERVICE DUE EQUIPMENT REPLACEMENT (<2 HOURS). COORDINATE THE OUT OF SERVICE DATE, TIME, AND DURATION WITH COBB COUNTY WATER SYSTEM.
8. REPLACE THE EXISTING POLE LIGHT FIXTURE WITH NEW LED FIXTURE. LED AREA LIGHT, DIE-CAST ALUMINUM HOUSING, -400C TO 400C OPERATING TEMPERATURE, 60 LED HEAD, 700MA DRIVER, 5000K COLOR TEMPERATURE, 70 CRI, TYPE 3 LIGHT DISTRIBUTION, 5 YEAR WARRANTY, HUBBLE CIMARON LED SERIES, "CL1-60L-A-5K-3 OR APPROVED EQUAL. INSTALL A NEW WATER PROOF LIGHT SWITCH AT THE EXISTING POLE AND CONNECT IT TO THE NEW LIGHT.

1/2"=1'

VERIFY SCALE

1" IS ONE INCH ON ORIGINAL DRAWING.

DATE

PROJ	JJX13603
------	----------

OWG 70-E-01

SHEET 46 of 52

[illegible]

10 10TH STREET, SUITE 1400
ATLANTA, GA 30309
GA LIC # PEF000350 (EXP 6/30/2022)

FY21 MULTIPLE PUMP STATIONS PROJECTS
COBB COUNTY WATER SYSTEM
GEORGIA

WEST HAMPTON # 2
PUMP STATION
ELECTRICAL SITE PLAN

BID DOCUMENTS

LEVEL OF DOCUMENTATION
JACOBS AND IS NOT TO BE USED, IN WHOLE OR IN PART, FOR ANY OTHER PROJECT WITHOUT THE WRITTEN AUTHORIZATION OF JACOBS.
© JACOBS 2020. ALL RIGHTS RESERVED.



