



COBB COUNTY WATER SYSTEM

Customer Services Facility
660 South Cobb Drive
Marietta, Georgia 30060-3105
770-419-6200
www.cobbwater.org

Judy B. Jones, P.E.

Director

Divisions:

Accounting
Communications & Education
Customer Services
Engineering & Records
Environmental Compliance
Stormwater Management
System Maintenance
Water Protection

October 8, 2020

To: Plan Holders

Re: **Addendum No. 1**
FY21 MULTIPLE PUMP STATIONS PROJECTS
Program No. S5036

The following addition/changes modify the Contract Documents for the project "FY21 Multiple Pump Stations Projects", dated September 25, 2020. The receipt of this addendum must be noted in the appropriate location on the bid form that is submitted to the Purchasing Department.

Part A - Additions/Deletions/Changes to the Contract Documents:

1. The bid solicitation for the proposed construction project has been extended:

Separate, sealed bids for furnishing all materials, labor, tools, equipment, and incidentals necessary for the construction of the aforementioned project will be received by **COBB COUNTY**, a political subdivision of the State of Georgia, herein referred to as "Owner", at the offices of the **Purchasing Department, 122 Waddell Street NE, Marietta, GA 30060, until 12:00 Noon** (local time) on **November 12, 2020. No bids will be accepted after the 12:00 Noon deadline.**

Bids will be opened at **2:00 PM** (local time) on **November 12, 2020**, at the **Purchasing Department, 122 Waddell Street NE, Marietta, GA 30060.**

No interpretation of the meaning of the drawings, specifications or other pre-bid documents will be made to any Bidder orally. Every request for such interpretation should be in writing, addressed to the Owner, and in order to be given consideration must be received by **5:00 PM** (local time) on **November 3, 2020**. Any and all such interpretations and any supplemental instructions will be in the form of written addenda to the bid. All addenda so issued shall become a part of the Contract Documents.

2. Change the date in the fourth line of the Paragraph 9 (Interpretations) of Section 00100 (Instructions to Bidders) from October 22, 2020 to November 3, 2020.
3. Add the following to Paragraph 10 (Site Examination) of Section 00100 (Instructions to Bidders:

Addendum No. 1

FY21 MULTIPLE PUMP STATIONS PROJECTS

Program No. S5036

October 8, 2020

Page 2 of 3

“Since the pump stations included in this project are located at remote, unattended, secured sites, visits to the several sites cannot be scheduled individually: therefore, a Bidder Site Visit Event has been scheduled, as follows:

All sites will be open for inspection on Thursday, October 15, 2020, from 7:00 AM until 12:00 PM. Note that several of the pump stations are in residential neighborhoods and parking on-site is limited.

Cobb County Water System maintenance personnel will be present at each site during the Bidder Site Visit Event; however, these personnel will not answer project-specific questions or provide any additional information regarding the nature of the proposed work. All requests for interpretation must be submitted in writing in accordance with Paragraph 9 of this Section.

Pre-registration is not required and while attendance at this Bidder Site Visit Event is not mandatory, the requirements of this paragraph (Site Examination) must be met by the Bidder.”

4. The following “Drawings for S5036 FY21 Multiple Pump Stations Projects” have been re-issued. Discard the previously-issued drawings and replace with the new version.
 - a. DWG 00-G-00; Sheet 1 of 52
 - b. DWG 00-G-01; Sheet 2 of 52
 - c. DWG 00-G-06; Sheet 7 of 52
 - d. DWG 45-C-01; Sheet 16 of 52
 - e. DWG 45-PR-01; Sheet 23 of 52
 - f. DWG 50-C-01; Sheet 24 of 52
 - g. DWG 55-C-01; Sheet 28 of 52
 - h. DWG 55-C-02; Sheet 29 of 52
 - i. DWG 55-E-01; Sheet 30 of 52
 - j. DWG 55-PR-01; Sheet 36 of 52
 - k. DWG 60-C-01; Sheet 37 of 52
 - l. DWG 65-C-01; Sheet 41 of 52
 - m. DWG 65-E-01; Sheet 42 of 52
 - n. DWG 70-C-01; Sheet 45 of 52
 - o. DWG 75-C-01; Sheet 49 of 52

Sincerely,

COBB COUNTY WATER SYSTEM
Engineering and Records Division

Eric W. Olson

Eric W. Olson, P.E.
Division Manager



COBB COUNTY WATER SYSTEM

Customer Services Facility
660 South Cobb Drive
Marietta, Georgia 30060-3105
770-419-6200
www.cobbwater.org

Judy B. Jones, P.E.
Director

Divisions:
Accounting
Communications & Education
Customer Services
Engineering & Records
Environmental Compliance
Stormwater Management
System Maintenance
Water Protection

ADDENDUM ACKNOWLEDGMENT FORM

FY21 MULTIPLE PUMP STATIONS PROJECTS PROGRAM NO. S5036

October 8, 2020

Addendum No. 1 hereby amends and/or modifies the bid documents as originally issued for this project. All proposers are subject to the provision of these addendum.

Receipt of this addendum MUST be acknowledged in the submitted bid. It is the Proposer's responsibility to ensure that they have all applicable addenda prior to submittal.

This acknowledgement form must be signed, dated, and included with your submitted bid after the cover page.

Company Name

Date

Signature

Printed Name

COBB COUNTY WATER SYSTEM

CONSTRUCTION PLANS FOR

FY 21 MULTIPLE PUMP STATIONS PROJECTS PROJECT NO. S5036



COBB COUNTY BOARD OF COMMISSIONERS:
MICHAEL H. BOYCE - CHAIRMAN
KELI GAMBRILL - DISTRICT 1 *JO ANN BIRRELL - DISTRICT 3*
BOB OTT - DISTRICT 2 *LISA CUPID - DISTRICT 4*

JUDY B. JONES, P.E.
DIRECTOR COBB COUNTY WATER SYSTEM

ERIC W. OLSON, P.E.
MANAGER, ENGINEERING AND RECORDS DIVISION

24-HOUR EMERGENCY CCWS
CONTACT NUMBER 770-419-6201

VOLUME 2 OF 2 - DRAWINGS

For information regarding this project, contact:

DAN GUILL, P.E.
10 10th STREET
SUITE 1400
ATLANTA, GA 30309
404-751-5577

Jacobs

JACOBS Project No. JJX13603
OCTOBER 2020

BID DOCUMENTS

<u>SHT NO.</u>	<u>DWG NO.</u>	<u>TITLE</u>
----------------	----------------	--------------

<u>GENERAL</u>		
01	00-G-00	COVER
02	00-G-01	LOCATION MAP, DRAWING INDEX
03	00-G-02	GENERAL ABBREVIATIONS
04	00-G-03	GENERAL ELECTRICAL LEGEND 1
05	00-G-04	GENERAL ELECTRICAL LEGEND 2
06	00-G-05	GENERAL ELECTRICAL STANDARD DETAILS
07	00-G-06	GENERAL STRUCTURAL NOTES
08	00-G-07	STRUCTURAL STANDARD DETAILS

SIX FLAGS PUMP STATION

09	31-E-01	SIX FLAGS PUMP STATION ONE LINE DIAGRAM & PANEL SCHEDULE
10	31-E-02	SIX FLAGS PUMP STATION UPPER LEVEL POWER PLAN
11	31-E-03	SIX FLAGS PUMP STATION LOWER LEVEL POWER PLAN
12	31-E-04	SIX FLAGS PUMP STATION CONTROL DIAGRAM
13	31-E-05	SIX FLAGS PUMP STATION UPPER LEVEL PHOTO DETAILS
14	31-E-06	SIX FLAGS PUMP STATION LOWER LEVEL PHOTO DETAILS
15	31-PR-01	SIX FLAGS PUMP STATION SECTION

PLANT ATKINSON ROAD PUMP STATION

16	45-C-01	PLANT ATKINSON ROAD PUMP STATION LAYOUT
17	45-E-01	PLANT ATKINSON ROAD PUMP STATION ELECTRICAL SITE PLAN
18	45-E-02	PLANT ATKINSON ROAD PUMP STATION ELECTRICAL EQUIPMENT BUILDING LAYOUT AND PANEL SCHEDULE
19	45-E-03	PLANT ATKINSON ROAD PUMP STATION ONE LINE DIAGRAM
20	45-E-04	PLANT ATKINSON ROAD PUMP STATION PHOTO DETAILS
21	45-E-05	PLANT ATKINSON ROAD PUMP STATION PHOTO DETAILS
22	45-E-06	PLANT ATKINSON ROAD PUMP STATION PHOTO DETAILS
23	45-PR-01	PLANT ATKINSON ROAD PUMP STATION PLAN AND SECTION

BRUSHY MOUNTAIN WB PUMP STATION

24	50-C-01	BRUSHY MOUNTAIN PUMP HOUSE LAYOUT
25	50-E-01	BRUSHY MOUNTAIN PUMP HOUSE ELECTRICAL SITE PLAN
26	50-E-02	BRUSHY MOUNTAIN PUMP HOUSE ONE LINE DIAGRAM
27	50-E-03	BRUSHY MOUNTAIN PUMP HOUSE PHOTO DETAILS

MARINA TRACE

28	55-C-01	MARINA TRACE PUMP STATION LAYOUT
29	55-C-02	MARINA TRACE PUMP STATION MANHOLE AND FENCE DETAILS
30	55-E-01	MARINA TRACE PUMP STATION ELECTRICAL SITE PLAN
31	55-E-02	MARINA TRACE PUMP STATION ELECTRICAL EQUIPMENT BUILDING LAYOUT AND PANEL SCHEDULE
32	55-E-03	MARINA TRACE PUMP STATION ONE LINE DIAGRAM
33	55-E-04	MARINA TRACE PUMP STATION CONTROL DIAGRAM
34	55-E-05	MARINA TRACE PUMP STATION PHOTO DETAILS
35	55-E-06	MARINA TRACE PUMP STATION PHOTO DETAILS
36	55-PR-01	MARINA TRACE PUMP STATION PLAN AND SECTION

ALLATOONA BEACH PUMP STATION

37	60-C-01	ALLATOONA BEACH PUMP STATION PUMP STATION LAYOUT
38	60-E-01	ALLATOONA BEACH PUMP STATION ELECTRICAL SITE PLAN
39	60-E-02	ALLATOONA BEACH PUMP STATION ONE-LINE DIAGRAM AND ELECTRICAL EQUIPMENT BUILDING LAYOUT
40	60-E-03	ALLATOONA BEACH PUMP STATION PHOTO DETAILS

WEST HAMPTON #1 PUMP STATION

41	65-C-01	WEST HAMPTON #1 PUMP STATION LAYOUT
42	65-E-01	WEST HAMPTON #1 PUMP STATION ELECTRICAL SITE PLAN
43	65-E-02	WEST HAMPTON #1 PUMP STATION ONE-LINE DIAGRAM
44	65-E-03	WEST HAMPTON #1 PUMP STATION PHOTO DETAILS

WEST HAMPTON #2 PUMP STATION

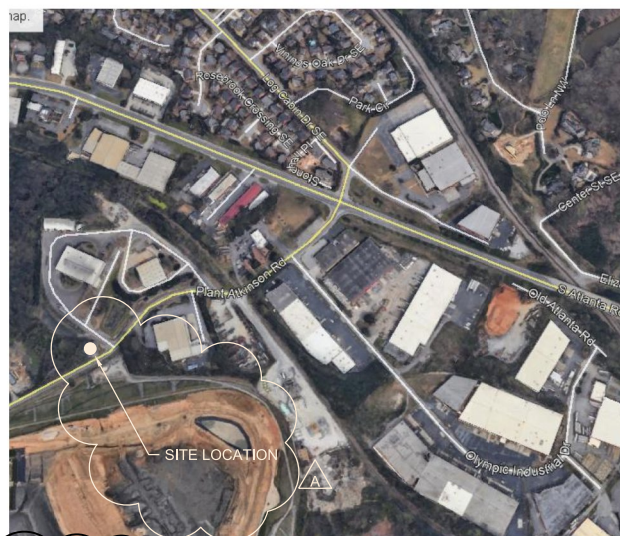
45	70-C-01	WEST HAMPTON #2 PUMP STATION LAYOUT
46	70-E-01	WEST HAMPTON #2 PUMP STATION ELECTRICAL SITE PLAN
47	70-E-02	WEST HAMPTON #2 PUMP STATION ONE-LINE DIAGRAM
48	70-E-03	WEST HAMPTON #2 PUMP STATION PHOTO DETAILS

WOODY VALLEY PUMP STATION

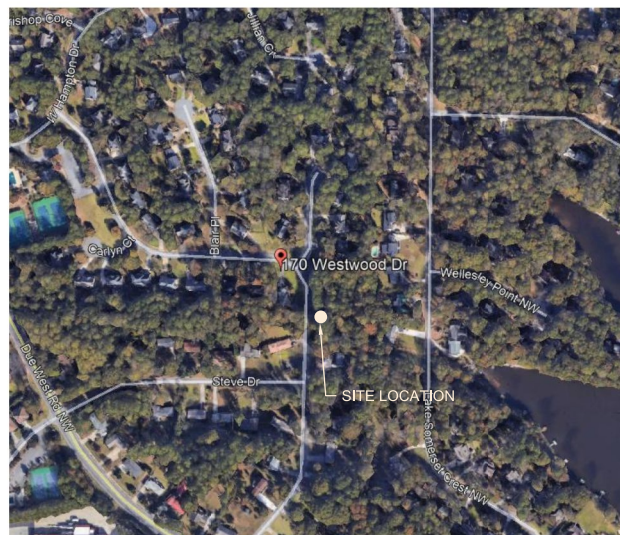
49	75-C-01	WOOD VALLEY PUMP STATION LAYOUT
50	75-E-01	WOOD VALLEY PUMP STATION ELECTRICAL SITE PLAN
51	75-E-02	WOOD VALLEY PUMP STATION ONE-LINE DIAGRAM AND ELECTRICAL EQUIPMENT BUILDING LAYOUT
52	75-E-03	WOOD VALLEY PUMP STATION PHOTO DETAILS



ALLATOONA BEACH
5112 ALLATOONA DRIVE
ACWORTH GA. 30101



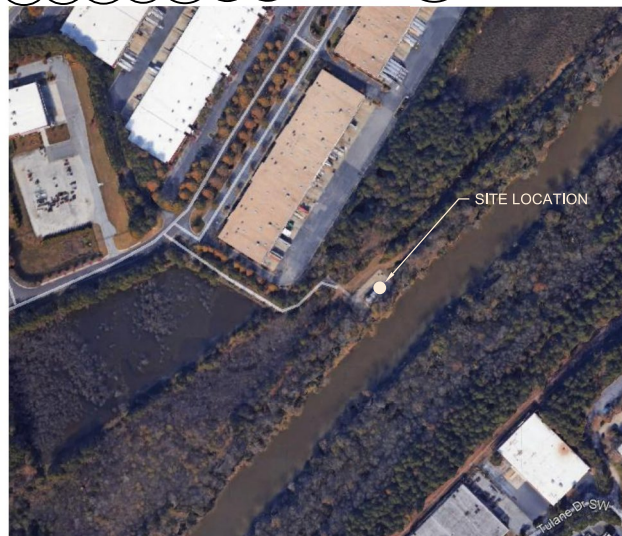
PLANT ATKINSON ROAD
4964 PLANT ATKINSON ROAD,
SMYRNA GA. 30080



WEST HAMPTON #2
170 WESTWOOD DRIVE,
MARIETTA, GA 30064



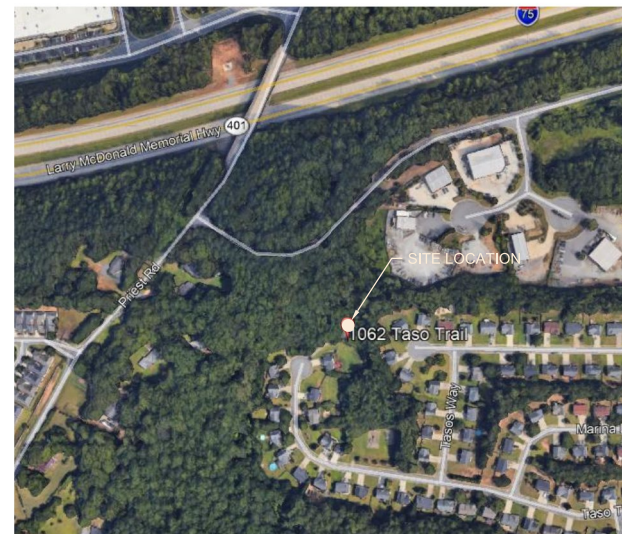
BRUSHY MOUNTAIN PUMP HOUSE
GEORGIA POWER NEAR THE INTERSECTION OF WHITE CIRCLE
NOONDAY CHURCH ROAD,
KENNESAW GA, 30144



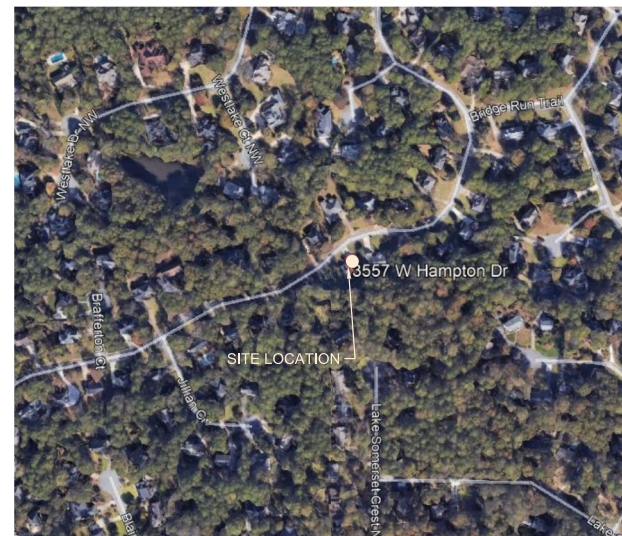
SIX FLAGS
8110 TROON CIRCLE,
AUSTELL GA. 30168




WOOD VALLEY
4539 WOODVALLEY DRIVE
ACWORTH GA. 30101



MARINA TRACE
1062 TASO TRAIL, NW
ACWORTH GA. 30101



WEST HAMPTON #1
3557B WEST HAMPTON DRIVE,
MARIETTA, GA 30064

		10 10TH STREET, SUITE 1400 ATLANTA, GA. 30309 GA LIC # PEF000350 (EXP 6/30/2022)		S5036 - FY21 MULTIPLE PUMP STATIONS PROJECTS COBB COUNTY WATER SYSTEM GEORGIA		NO. DATE A 10/2020		REVISION ALLATOONA BA BRUSHY MTN & PLANT ATKINSON ADDRESS REVISED		BY APVD EG	
GENERAL LOCATION MAP, DRAWING INDEX		S5036 - FY21 MULTIPLE PUMP STATIONS PROJECTS COBB COUNTY WATER SYSTEM GEORGIA		NO. DATE A 10/2020		REVISION ALLATOONA BA BRUSHY MTN & PLANT ATKINSON ADDRESS REVISED		BY APVD EG			
<div style="display: flex; justify-content: space-between;"> <div> DATE JUNE 2020 PROJ JJX13603 DWG 00-G-01 SHEET 2 of 52 </div> <div> <div style="border: 1px solid black; padding: 5px; text-align: center;"> VERIFY SCALE BAR IS ONE INCH ON ORIGINAL DRAWING. 0 1" </div> </div> </div>											
<div style="display: flex; justify-content: space-between;"> <div> DATE JUNE 2020 PROJ JJX13603 DWG 00-G-01 SHEET 2 of 52 </div> <div> <div style="border: 1px solid black; padding: 5px; text-align: center;"> VERIFY SCALE BAR IS ONE INCH ON ORIGINAL DRAWING. 0 1" </div> </div> </div>											
<div style="display: flex; justify-content: space-between;"> <div> DATE JUNE 2020 PROJ JJX13603 DWG 00-G-01 SHEET 2 of 52 </div> <div> <div style="border: 1px solid black; padding: 5px; text-align: center;"> VERIFY SCALE BAR IS ONE INCH ON ORIGINAL DRAWING. 0 1" </div> </div> </div>											
<div style="display: flex; justify-content: space-between;"> <div> DATE JUNE 2020 PROJ JJX13603 DWG 00-G-01 SHEET 2 of 52 </div> <div> <div style="border: 1px solid black; padding: 5px; text-align: center;"> VERIFY SCALE BAR IS ONE INCH ON ORIGINAL DRAWING. 0 1" </div> </div> </div>											
<div style="display: flex; justify-content: space-between;"> <div> DATE JUNE 2020 PROJ JJX13603 DWG 00-G-01 SHEET 2 of 52 </div> <div> <div style="border: 1px solid black; padding: 5px; text-align: center;"> VERIFY SCALE BAR IS ONE INCH ON ORIGINAL DRAWING. 0 1" </div> </div> </div>											
<div style="display: flex; justify-content: space-between;"> <div> DATE JUNE 2020 PROJ JJX13603 DWG 00-G-01 SHEET 2 of 52 </div> <div> <div style="border: 1px solid black; padding: 5px; text-align: center;"> VERIFY SCALE BAR IS ONE INCH ON ORIGINAL DRAWING. 0 1" </div> </div> </div>											
<div style="display: flex; justify-content: space-between;"> <div> DATE JUNE 2020 PROJ JJX13603 DWG 00-G-01 SHEET 2 of 52 </div> <div> <div style="border: 1px solid black; padding: 5px; text-align: center;"> VERIFY SCALE BAR IS ONE INCH ON ORIGINAL DRAWING. 0 1" </div> </div> </div>											
<div style="display: flex; justify-content: space-between;"> <div> DATE JUNE 2020 PROJ JJX13603 DWG 00-G-01 SHEET 2 of 52 </div> <div> <div style="border: 1px solid black; padding: 5px; text-align: center;"> VERIFY SCALE BAR IS ONE INCH ON ORIGINAL DRAWING. 0 1" </div> </div> </div>											
<div style="display: flex; justify-content: space-between;"> <div> DATE JUNE 2020 PROJ JJX13603 DWG 00-G-01 SHEET 2 of 52 </div> <div> <div style="border: 1px solid black; padding: 5px; text-align: center;"> VERIFY SCALE BAR IS ONE INCH ON ORIGINAL DRAWING. 0 1" </div> </div> </div>											
<div style="display: flex; justify-content: space-between;"> <div> DATE JUNE 2020 PROJ JJX13603 DWG 00-G-01 SHEET 2 of 52 </div> <div> <div style="border: 1px solid black; padding: 5px; text-align: center;"> VERIFY SCALE BAR IS ONE INCH ON ORIGINAL DRAWING. 0 1" </div> </div> </div>											
<div style="display: flex; justify-content: space-between;"> <div> DATE JUNE 2020 PROJ JJX13603 DWG 00-G-01 SHEET 2 of 52 </div> <div> <div style="border: 1px solid black; padding: 5px; text-align: center;"> VERIFY SCALE BAR IS ONE INCH ON ORIGINAL DRAWING. 0 1" </div> </div> </div>											
<div style="display: flex; justify-content: space-between;"> <div> DATE JUNE 2020 PROJ JJX13603 DWG 00-G-01 SHEET 2 of 52 </div> <div> <div style="border: 1px solid black; padding: 5px; text-align: center;"> VERIFY SCALE BAR IS ONE INCH ON ORIGINAL DRAWING. 0 1" </div> </div> </div>											
<div style="display: flex; justify-content: space-between;"> <div> DATE JUNE 2020 PROJ JJX13603 DWG 00-G-01 SHEET 2 of 52 </div> <div> <div style="border: 1px solid black; padding: 5px; text-align: center;"> VERIFY SCALE BAR IS ONE INCH ON ORIGINAL DRAWING. 0 1" </div> </div> </div>											
<div style="display: flex; justify-content: space-between;"> <div> DATE JUNE 2020 PROJ JJX13603 DWG 00-G-01 SHEET 2 of 52 </div> <div> <div style="border: 1px solid black; padding: 5px; text-align: center;"> VERIFY SCALE BAR IS ONE INCH ON ORIGINAL DRAWING. 0 1" </div> </div> </div>											
<div style="display: flex; justify-content: space-between;"> <div> DATE JUNE 2020 PROJ JJX13603 DWG 00-G-01 SHEET 2 of 52 </div> <div> <div style="border: 1px solid black; padding: 5px; text-align: center;"> VERIFY SCALE BAR IS ONE INCH ON ORIGINAL DRAWING. 0 1" </div> </div> </div>											
<div style="display: flex; justify-content: space-between;"> <div> DATE JUNE 2020 PROJ JJX13603 DWG 00-G-01 SHEET 2 of 52 </div> <div> <div style="border: 1px solid black; padding: 5px; text-align: center;"> VERIFY SCALE BAR IS ONE INCH ON ORIGINAL DRAWING. 0 1" </div> </div> </div>											
<div style="display: flex; justify-content: space-between;"> <div> DATE JUNE 2020 PROJ JJX13603 DWG 00-G-01 SHEET 2 of 52 </div> <div> <div style="border: 1px solid black; padding: 5px; text-align: center;"> VERIFY SCALE BAR IS ONE INCH ON ORIGINAL DRAWING. 0 1" </div> </div> </div>											
<div style="display: flex; justify-content: space-between;"> <div> DATE JUNE 2020 PROJ JJX13603 DWG 00-G-01 SHEET 2 of 52 </div> <div> <div style="border: 1px solid black; padding: 5px; text-align: center;"> VERIFY SCALE BAR IS ONE INCH ON ORIGINAL DRAWING. 0 1" </div> </div> </div>											
<div style="display: flex; justify-content: space-between;"> <div> DATE JUNE 2020 PROJ JJX13603 DWG 00-G-01 SHEET 2 of 52 </div> <div> <div style="border: 1px solid black; padding: 5px; text-align: center;"> VERIFY SCALE BAR IS ONE INCH ON ORIGINAL DRAWING. 0 1" </div> </div> </div>											
<div style="display: flex; justify-content: space-between;"> <div> DATE JUNE 2020 PROJ JJX13603 DWG 00-G-01 SHEET 2 of 52 </div> <div> <div style="border: 1px solid black; padding: 5px; text-align: center;"> VERIFY SCALE BAR IS ONE INCH ON ORIGINAL DRAWING. 0 1" </div> </div> </div>											
<div style="display: flex; justify-content: space-between;"> <div> DATE JUNE 2020 PROJ JJX13603 DWG 00-G-01 SHEET 2 of 52 </div> <div> <div style="border: 1px solid black; padding: 5px; text-align: center;"> VERIFY SCALE BAR IS ONE INCH ON ORIGINAL DRAWING. 0 1" </div> </div> </div>											
<div style="display: flex; justify-content: space-between;"> <div> DATE JUNE 2020 PROJ JJX13603 DWG 00-G-01 SHEET 2 of 52 </div> <div> <div style="border: 1px solid black; padding: 5px; text-align: center;"> VERIFY SCALE BAR IS ONE INCH ON ORIGINAL DRAWING. 0 1" </div> </div> </div>											
<div style="display: flex; justify-content: space-between;"> <div> DATE JUNE 2020 PROJ JJX13603 DWG 00-G-01 SHEET 2 of 52 </div> <div> <div style="border: 1px solid black; padding: 5px; text-align: center;"> VERIFY SCALE BAR IS ONE INCH ON ORIGINAL DRAWING. 0 1" </div> </div> </div>											
<div style="display: flex; justify-content: space-between;"> <div> DATE JUNE 2020 PROJ JJX13603 DWG 00-G-01 SHEET 2 of 52 </div> <div> <div style="border: 1px solid black; padding: 5px; text-align: center;"> VERIFY SCALE BAR IS ONE INCH ON ORIGINAL DRAWING. 0 1" </div> </div> </div>											
<div style="display: flex; justify-content: space-between;"> <div> DATE JUNE 2020 PROJ JJX13603 DWG 00-G-01 SHEET 2 of 52 </div> </div>											

DESIGN CRITERIA

1. APPLICABLE CODE: 2018 INTERNATIONAL BUILDING CODE (IBC), AS AMENDED BY THE STATE OF GEORGIA IN 2020 AND APPLICABLE LOCAL AGENCIES.
2. REFER TO THE DRAWINGS FOR ADDITIONAL AND SPECIFIC STRUCTURE LOADINGS AND REQUIREMENTS.
3. ALL LOADS SHOWN ARE SERVICE LEVEL (UNFACTORED) UNLESS SPECIFICALLY NOTED OTHERWISE.
4. DEAD LOADS:
SELF WEIGHT
5. ROOF LOADS:
- = 5 PSF
- SNOW EXPOSURE FACTOR, C_e = 0.9
- THERMAL FACTOR, C_t = 1.0
- SLOPE FACTOR, C_s = 1.0
- IMPORTANCE FACTOR, I = 1.10
- MINIMUM FLAT ROOF SNOW LOAD, P_f = 4 PSF
- ROOF LIVE LOAD = 20 PSF
- MISCELLANEOUS MECHANICAL AND ELECTRICAL LOADS = 10 PSF
- DEFLECTION CRITERIA FOR CONTRACTOR DESIGNED ROOF FRAMING MEMBERS:
- TOTAL LOAD $L/240$
- LIVE LOAD $L/360$
- SNOW LOAD $L/360$
6. WIND LOADS:
- BASIC WIND SPEED (3-SECOND GUST)
- Vult = 113 MPH
- Vasd = 88 MPH
- EXPOSURE CATEGORY C
- RISK CATEGORY = III
- IMPORTANCE FACTOR, I_w = 1.00
7. SEISMIC LOADS:
- | | ALLATOONA
BEACH | WEST
HAMPTON #2 | PLANT
ATKINSON | WOOD
VALLEY | WEST
HAMPTON #1 | BUSHY
MOUNTAIN | MARINA
TRACE |
|---|--------------------|--------------------|-------------------|----------------|--------------------|-------------------|-----------------|
| MAPPED SPECTRAL
RESPONSE ACCELERATIONS | | | | | | | |
| S_s | 0.251g | 0.224g | 0.194g | 0.250g | 0.224g | 0.223g | 0.246g |
| S_1 | 0.092g | 0.090g | 0.087g | 0.092g | 0.090g | 0.090g | 0.092g |
| DESIGN SPECTRAL
RESPONSE ACCELERATIONS | | | | | | | |
| S_{DS} | 0.268g | 0.238g | 0.207g | 0.266g | 0.239g | 0.238g | 0.262g |
| S_{D1} | 0.148g | 0.144g | 0.139g | 0.148g | 0.144g | 0.144g | 0.148g |
- SITE CLASS = D
- SEISMIC DESIGN CATEGORY = C
- IMPORTANCE FACTOR, I_e = 1.25
9. FROST DEPTH: = 12 IN

GENERAL INFORMATION

1. FOR ABBREVIATIONS NOT LISTED, SEE ASME Y14.38 "ABBREVIATIONS AND ACRONYMS: PUBLICATION AS DISTRIBUTED BY THE AMERICAN SOCIETY OF MECHANICAL ENGINEERS (ASME).
2. DESIGN DETAILS ARE INTENDED TO BE TYPICAL AND SHALL APPLY TO SIMILAR SITUATIONS OCCURRING THROUGHOUT THE PROJECT, WHETHER OR NOT THEY ARE INDIVIDUALLY CALLED OUT.
3. VERIFY FINAL OPENING DIMENSIONS IN SLAB WITH OTHER DISCIPLINE DRAWINGS PRIOR TO CONSTRUCTION OF THESE ELEMENTS.
4. FOR NUMBER, TYPE, SIZE, ARRANGEMENT, AND/OR LOCATION OF EQUIPMENT PADS, SEE OTHER DISCIPLINE DRAWINGS. COORDINATE WITH EQUIPMENT SUPPLIER PRIOR TO PLACING SLABS, WALLS AND FOUNDATIONS. COORDINATE OPENINGS WITH OTHER DISCIPLINE DRAWINGS.
5. DO NOT CUT OR MODIFY STRUCTURAL MEMBERS FOR PIPES, DUCTS, ETC. UNLESS SPECIFICALLY DETAILED OR APPROVED IN WRITING BY THE ENGINEER.
6. VISITS TO THE JOB SITE BY THE ENGINEER TO OBSERVE THE CONSTRUCTION DO NOT IN ANY WAY MEAN THAT ENGINEER IS GUARANTOR OF CONSTRUCTOR'S WORK, NOR RESPONSIBLE FOR THE COMPREHENSIVE OR SPECIAL INSPECTIONS, COORDINATION, SUPERVISION, OR SAFETY AT THE JOB SITE.
7. INFORMATION (DETAILING, DIMENSIONS, CONFIGURATIONS, AND ELEVATIONS, ETC.) OF EXISTING CONSTRUCTION SHOWN REFLECTS AVAILABLE EXISTING DESIGN DOCUMENTS, AND DOES NOT NECESSARILY REPRESENT THE AS-CONSTRUCTED CONDITIONS. THE CONTRACTOR SHALL FIELD VERIFY DIMENSIONS, ELEVATIONS AND DETAILING OF THE EXISTING STRUCTURES PRIOR TO UNDERTAKING ANY WORK THAT IS AFFECTED BY THE EXISTING STRUCTURE. NOTIFY ENGINEER IF CONDITIONS VARY FROM THAT SHOWN PRIOR TO STARTING WORK

INSPECTION AND TESTING

1. SPECIAL INSPECTION DOES NOT INCLUDE OR WAIVE THE RESPONSIBILITY FOR INSPECTIONS REQUIRED BY THE BUILDING OFFICIAL. THE CONTRACTOR SHALL SCHEDULE BOTH INSPECTIONS.
2. SPECIFIED CONCRETE AND OTHER MATERIAL TESTING RELATED TO SPECIAL INSPECTION DURING CONSTRUCTION WILL BE OWNER FURNISHED.
3. SPECIFIED LABORATORY TEST MIXES AND SIMILAR TEST RESULTS TO VERIFY MATERIAL QUALITY AND CONFORMANCE TO SPECIFICATIONS, AND SUBMITTED FOR REVIEW PRIOR TO ACCEPTANCE FOR USE ON THE PROJECT, SHALL BE THE RESPONSIBILITY OF THE CONTRACTOR.
4. SPECIAL INSPECTION, TESTING AND OBSERVATION (OWNER FURNISHED) IS REQUIRED IN ACCORDANCE WITH IBC SECTIONS 110, 1704, AND 1705 AS INDICATED IN THE STATEMENT OF SPECIAL INSPECTIONS. REFER TO 014533 SPECIAL INSPECTION OBSERVATIONS AND TESTING.

FORMWORK, SHORING, AND BRACING

1. STRUCTURES SHOWN ON THE DRAWINGS HAVE BEEN DESIGNED FOR STABILITY UNDER FINAL CONDITIONS ONLY. DESIGN SHOWN DOES NOT INCLUDE NECESSARY COMPONENTS OR EQUIPMENT FOR STABILITY OF THE STRUCTURES DURING CONSTRUCTION. CONTRACTOR IS RESPONSIBLE FOR WORK RELATING TO CONSTRUCTION ERECTION METHODS, BRACING, SHORING, RIGGING, GUYS, SCAFFOLDING, FORMWORK, AND OTHER WORK AIDS REQUIRED TO SAFELY PERFORM THE WORK SHOWN.
2. TEMPORARY SHORING SHALL REMAIN IN PLACE UNTIL ELEVATED CONCRETE FLOOR OR SLABS HAVE REACHED 80 PERCENT OF THE 28 DAY COMPRESSIVE STRENGTH AS DETERMINED BY FIELD CYLINDER BREAKS.

CONCRETE REINFORCING

1. REINFORCING STEEL:
TYPICAL: ASTM A615, GRADE 60
2. FABRICATION AND PLACEMENT OF REINFORCING STEEL SHALL BE IN ACCORDANCE WITH CRSI MSP-1 "MANUAL OF STANDARD PRACTICE" AND ACI 301 "SPECIFICATIONS FOR STRUCTURAL CONCRETE".
3. MINIMUM REINFORCING FOR CONCRETE WALLS AND SLABS SHALL BE AS FOLLOWS:
- | <u>THICKNESS</u> | <u>REINF EACH WAY</u> | <u>LOCATION</u> |
|------------------|-----------------------|-----------------|
| 6" | #4@12" | CENTERED |
| 8" | #5@12" | CENTERED |
| 10" | #4@12" | EACH FACE |
| 12" | #5@12" | EACH FACE |
- PROVIDE LARGER SIZES AND MORE REINFORCING IN SECTIONS OF CONCRETE WHERE REQUIRED BY THE DETAILS ON THE DRAWINGS OR BY THE SPECIFICATIONS.
4. CONCRETE COVER FOR REINFORCING, UNLESS SHOWN OTHERWISE, SHALL BE:
WHEN CAST AGAINST EARTH: 3"
TYPICAL: 2"
5. REINFORCEMENT BENDS AND LAPS, UNLESS OTHERWISE NOTED, SHALL SATISFY THE FOLLOWING MINIMUM REQUIREMENTS:

CONCRETE DESIGN STRENGTH = 4,000 PSI MIN AT 28 DAYS ³ GRADE 60 REINFORCING STEEL											
BAR SIZE		#3	#4	#5	#6	#7	#8	#9	#10	#11	
LAP SPLICE LENGTH											
SPACING = 3"	TOP BAR ²	1'-4"	1'-8"	2'-1"	3'-0"	5'-2"	6'-8"	8'-6"	10'-10"	13'-4"	
	OTHER BAR	1'-4"	1'-4"	1'-8"	2'-4"	4'-0"	5'-2"	6'-7"	8'-4"	10'-3"	
SPACING = 4"	TOP BAR ²	1'-4"	1'-8"	2'-0"	2'-5"	3'-10"	5'-0"	6'-5"	8'-1"	10'-0"	
	OTHER BAR	1'-4"	1'-4"	1'-7"	1'-10"	3'-0"	3'-11"	4'-11"	6'-3"	7'-8"	
SPACING ≥ 6"	TOP BAR ²	1'-4"	1'-8"	2'-0"	2'-5"	3'-6"	4'-0"	5'-0"	6'-2"	7'-5"	
	OTHER BAR	1'-4"	1'-4"	1'-7"	1'-10"	2'-9"	3'-1"	3'-10"	4'-9"	5'-8"	
EMBEDMENT LENGTH											
SPACING = 3"	TOP BAR ²	1'-0"	1'-3"	1'-8"	2'-4"	4'-0"	5'-2"	6'-7"	8'-4"	10'-3"	
	OTHER BAR	1'-0"	1'-0"	1'-3"	1'-10"	3'-1"	4'-0"	5'-1"	6'-5"	7'-11"	
SPACING = 4"	TOP BAR ²	1'-0"	1'-3"	1'-7"	1'-10"	3'-0"	3'-11"	4'-11"	6'-3"	7'-8"	
	OTHER BAR	1'-0"	1'-0"	1'-3"	1'-5"	2'-4"	3'-0"	3'-10"	4'-10"	5'-11"	
SPACING ≥ 6"	TOP BAR ²	1'-0"	1'-3"	1'-7"	1'-10"	2'-9"	3'-1"	3'-10"	4'-9"	5'-8"	
	OTHER BAR	1'-0"	1'-0"	1'-3"	1'-5"	2'-1"	2'-5"	3'-0"	3'-8"	4'-5"	

1. LAP LENGTHS ARE BASED ON MINIMUM CONCRETE COVER OF 2". LONGER LENGTHS ARE REQUIRED FOR CONCRETE COVER LESS THAN 2".
2. TOP BARS SHALL BE DEFINED AS ANY HORIZONTAL BARS PLACED SUCH THAT MORE THAN 12 INCHES OF CONCRETE IS CAST IN THE MEMBER BELOW THE BAR IN ANY SINGLE POUR. HORIZONTAL WALL BARS ARE CONSIDERED TOP BARS.
3. WHERE 3000 PSI CONCRETE IS USED, INCREASE ABOVE LENGTHS BY 16 PERCENT. WHERE 3500 PSI CONCRETE IS USED, INCREASE ABOVE LENGTHS BY 7 PERCENT.

CAST IN PLACE CONCRETE


1. 28-DAY COMPRESSIVE STRENGTHS (TO MEET STRUCTURAL STRENGTH REQUIREMENTS): 4000 PSI
2. DESIGN STRENGTHS ARE SAME AS 28-DAY COMPRESSIVE STRENGTHS.
3. CONSTRUCTION JOINTS INDICATED ARE SUGGESTED LOCATIONS. CONTRACTOR MAY REVISE LOCATION OF JOINTS, SUBJECT TO SPECIFIED REQUIREMENTS. LAYOUT SHOWING ALL CONSTRUCTION JOINT LOCATIONS SHALL BE SUBMITTED FOR REVIEW BY ENGINEER.
4. ROUGHEN AND CLEAN CONSTRUCTION JOINTS IN WALLS AND SLABS AS SPECIFIED PRIOR TO PLACING ADJACENT CONCRETE.
5. COORDINATE PLACEMENT OF OPENINGS, PIPE PENETRATIONS, CURBS, DOWELS, SLEEVES, CONDUITS, BOLTS AND INSERTS PRIOR TO PLACEMENT OF CONCRETE.
6. NO ALUMINUM CONDUIT OR PRODUCTS CONTAINING ALUMINUM OR ANY OTHER MATERIAL INJURIOUS TO THE CONCRETE SHALL BE EMBEDDED IN THE CONCRETE.
7. PATCH FORM TIE HOLES WITH POLYMER MODIFIED CONCRETE REPAIR MORTAR.


WELDING

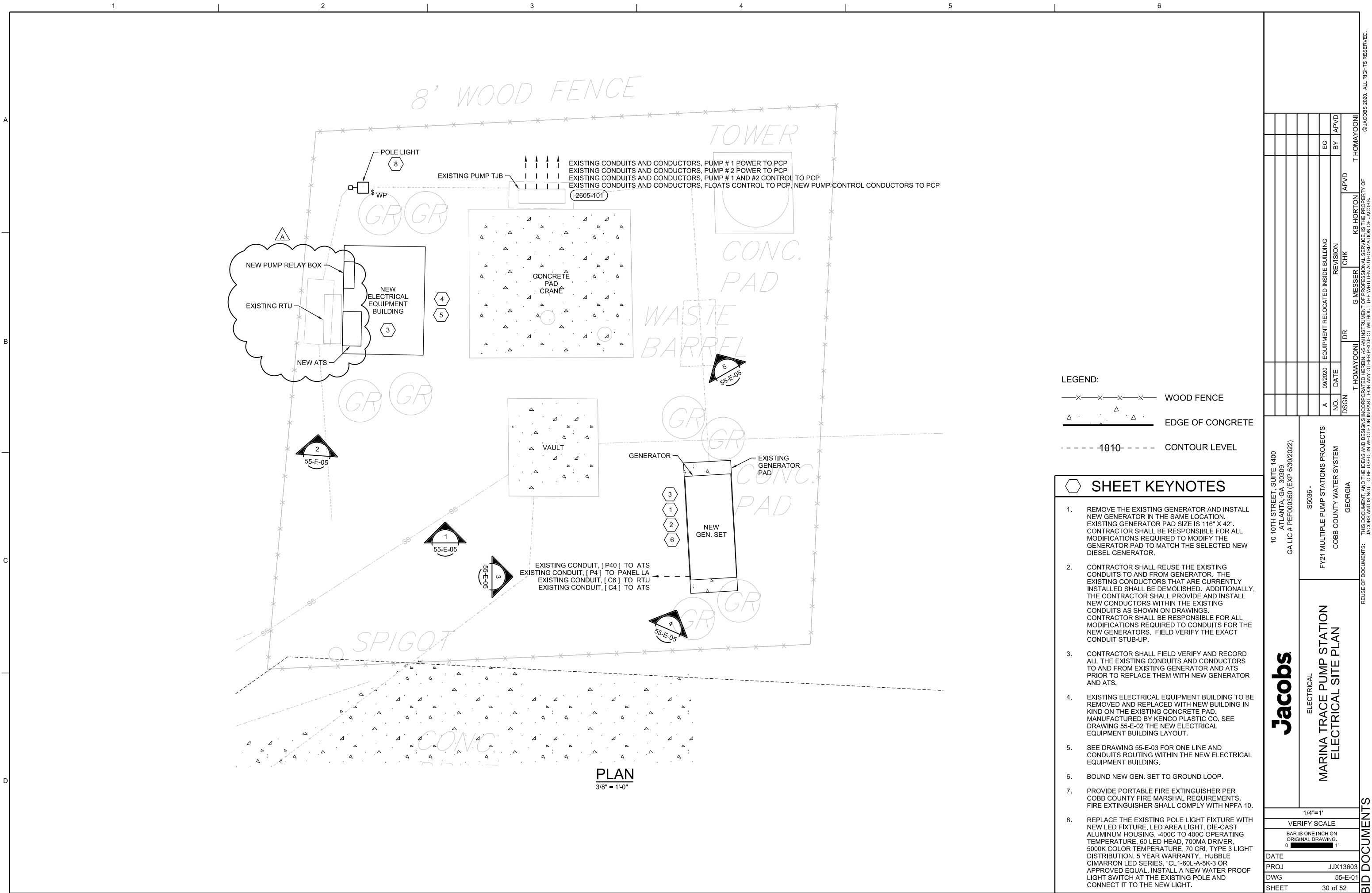
1. WELDS SHALL CONFORM TO AMERICAN WELDING SOCIETY (AWS D1.1, STRUCTURAL WELDING CODE STEEL D1.2, STRUCTURAL WELDING CODE ALUMINUM D1.6, STRUCTURAL WELDING CODE STAINLESS STEEL
2. REPAIR WELDS FOUND DEFECTIVE IN ACCORDANCE WITH AWS D1.1 SECTION 5.26.
3. USE INTERMITTENT WELDS AT FIELD WELDS OF EMBED PLATES AND ANGLES TO AVOID SPALLING OR CRACKING OF THE EXISTING CONCRETE.

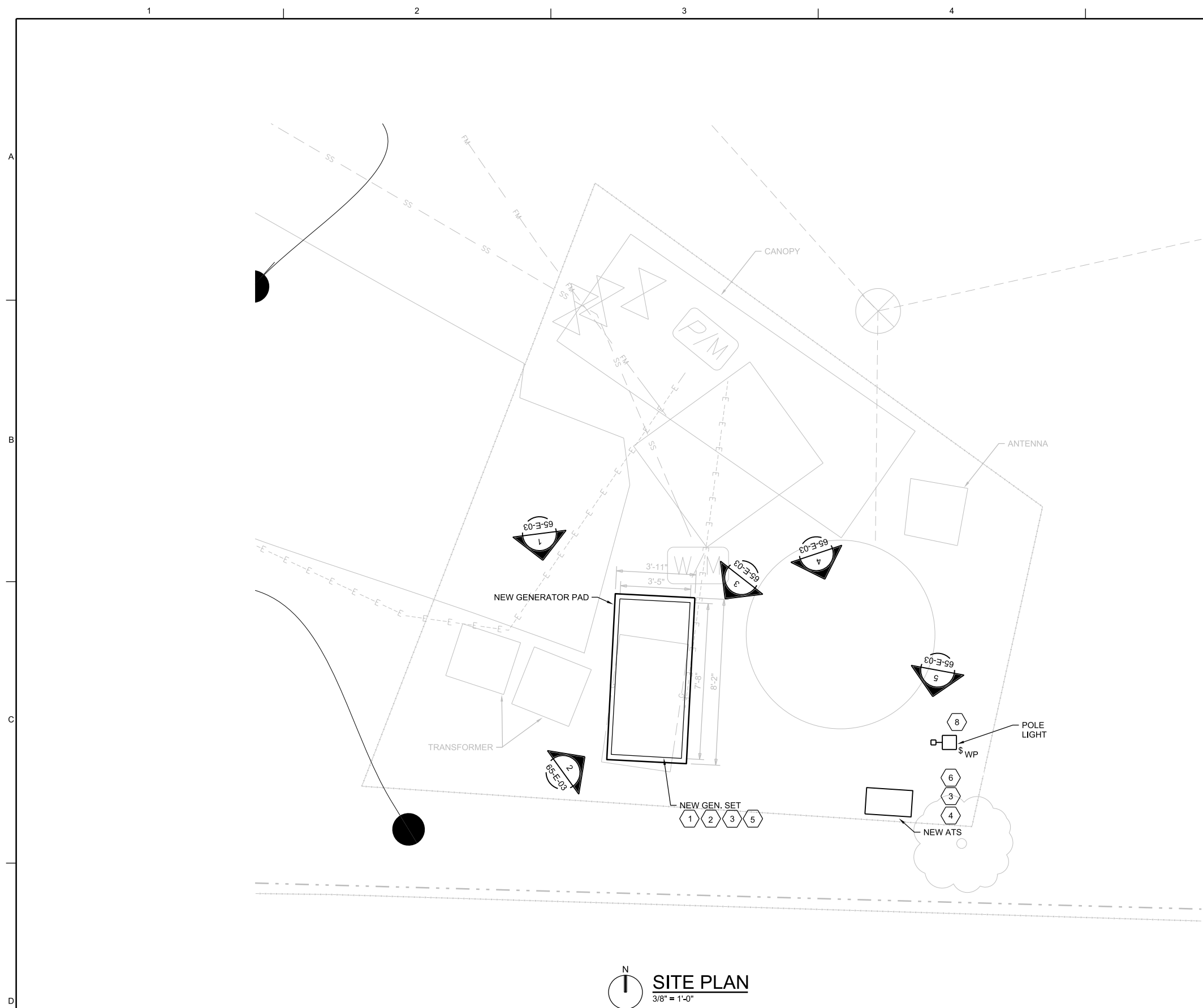
DEFERRED SUBMITTALS

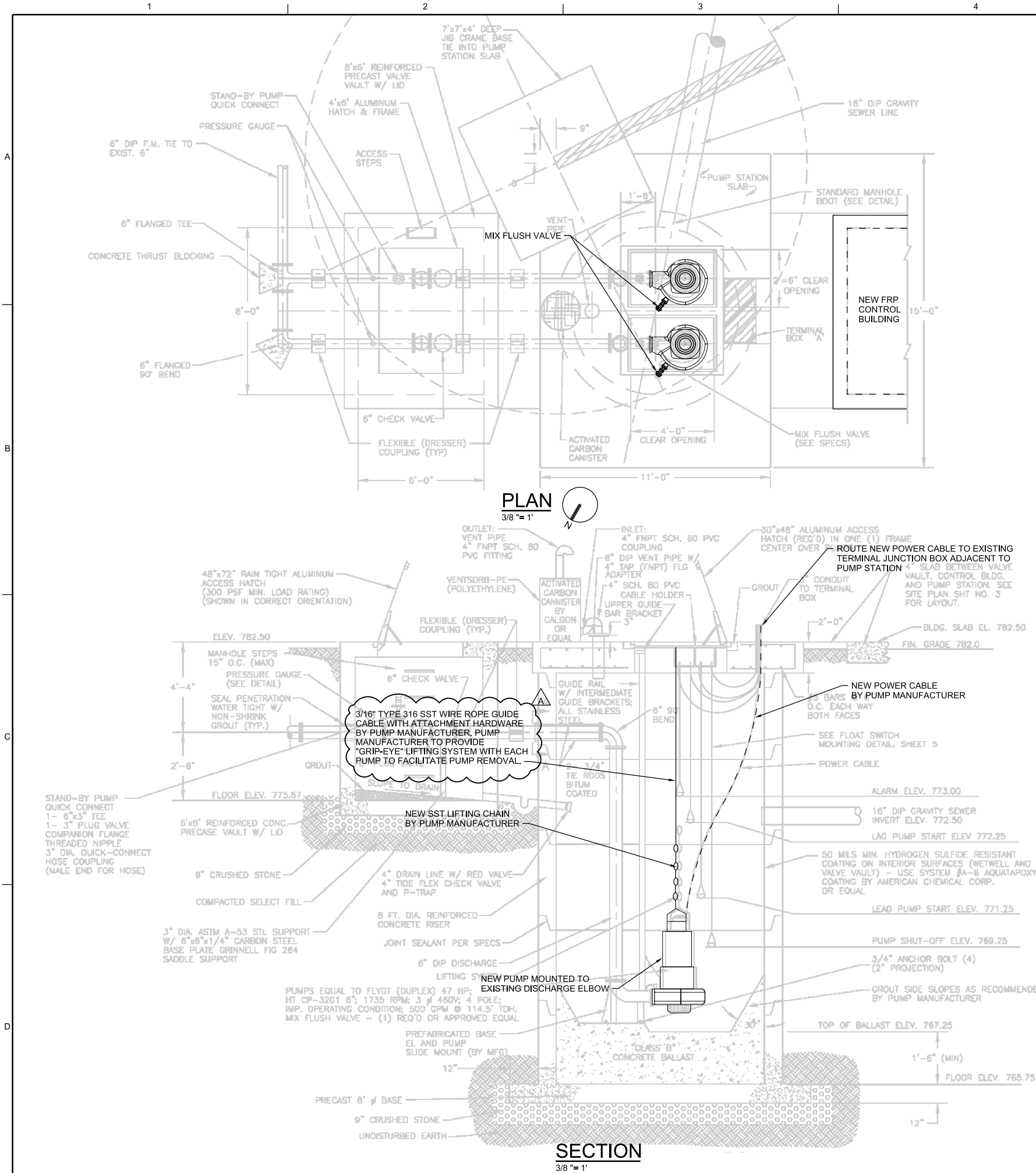
1. DEFERRED SUBMITTALS ARE THOSE PORTIONS OF THE DESIGN WHICH ARE NOT SUBMITTED AT THE TIME OF PERMIT APPLICATION AND WHICH ARE TO BE SUBMITTED TO THE PERMITTING AGENCY FOR ACCEPTANCE PRIOR TO INSTALLATION OF THAT PORTION OF THE WORK OR ARE REQUIRED TO BE SUBMITTED FOR REVIEW ONLY BY THE ENGINEER.
2. WHERE DEFERRED SUBMITTALS INCLUDE ADDITIONAL MATERIALS, INSTALLATION, ANCHORAGE, OR CERTIFICATION OF COMPONENTS THAT REQUIRE SPECIAL INSPECTION AND/OR STRUCTURAL OBSERVATION TO MEET CODE REQUIREMENTS, THE DEFERRED SUBMITTAL SHALL INCLUDE SPECIFIC LINE ITEMS TO BE ADDED TO THE APPROPRIATE TABLES IN THE PROJECT'S STATEMENT OF SPECIAL INSPECTIONS PLAN IF THEY ARE NOT ALREADY IDENTIFIED.
3. THE FOLLOWING IS A LIST OF DEFERRED SUBMITTALS PER IBC SECTION 107.3.4.1 OF IBC THAT ARE EXPECTED TO CONTAIN STRUCTURAL CALCULATIONS OR SAFETY RELATED SYSTEM INFORMATION FOR REVIEW TO MEET BUILDING PERMITTING REQUIREMENTS FOR DESIGNED SYSTEMS. PRIOR TO INSTALLATION OF THE INDICATED STRUCTURAL ELEMENT, EQUIPMENT, DISTRIBUTION SYSTEM, OR COMPONENT OR ITS ANCHORAGE, THE CONTRACTOR SHALL SUBMIT THE REQUIRED CALCULATIONS AND SUPPORTING DATA AND DRAWINGS FOR REVIEW AND ACCEPTANCE BY THE ENGINEER. ADDITIONALLY, ACCEPTANCE INDICATED ON THE ENGINEER'S COMMENT FORM, ALONG WITH THE COMPLETED, FINAL SUBMITTAL SHALL THEN BE SUBMITTED BY THE CONTRACTOR TO THE PERMITTING AGENCY AND APPROVED PRIOR TO INSTALLATION OF THESE ITEMS.

SPECIFICATION SECTION	CODE REQUIRED DEFERRED SUBMITTALS FOR REVIEW BY PERMITTING AGENCY
 (01611)	ANCHORAGE AND BRACING
13121	FABRICATED STRUCTURES
OTHER	ANY EQUIPMENT OR COMPONENT IN WHICH A TECHNICAL SPECIFICATION REQUIRES SUBMITTAL OF EQUIPMENT OR ANCHORAGE SYSTEM CALCULATIONS

<div></div> <div>10 10TH STREET, SUITE 1400 ATLANTA, GA 30309 GA LIC # PEF000350 (EXP 6/30/2022)</div>										







GENERAL NOTES

- 1 PUMP REMOVAL AND REPLACEMENT SHALL BE PERFORMED ONE AT A TIME.
- 2 ISOLATE PUMP ELECTRICALLY USING CCWS TAG -OUT/LOCK-OUT PROCEDURES.
- 3 ISOLATE PUMP USING EXISTING VALVES.
- 4 REMOVE EXISTING PUMP AND POWER CABLES.
- 5 INSTALL NEW PUMP, CONNECT TO EXISTING PUMP DISCHARGE ELBOW. PUMP SHALL BE A XYLEM NP 3203-462, 1775 RPM, 460 VOLT/3PHASE, 45 HP, SEE SPECIFICATION 11305 FOR ADDITIONAL PUMP INSTALLATION AND START-UP DETAILS AND REQUIREMENTS.
- 6 INSTALL NEW POWER CABLE. SEE ELECTRICAL DRAWINGS FOR CONNECTION DETAILS.
- 7 REMOVE EXISTING AND INSTALL AND CONNECT NEW PUMP PROTECTIVE RELAYS, MINI-CAS, IN EXISTING PUMP CONTROL PANEL LOCATED IN FRP CONTROL BUILDING ADJACENT TO PUMP STATION. SEE ELECTRICAL DRAWINGS FOR DETAILS.
- 8 PROVIDE MANUFACTURER SERVICES TO INSPECT INSTALLATION AND ASSIST IN START-UP. MANUFACTURER SHALL CERTIFY PUMP INSTALLATION PRIOR TO START-UP.
- 9 RESTORE POWER AND START-UP PUMP.
- 10 PERFORM PUMP START-UP AND FIELD TESTING. PERFORM 48 HR FUNCTIONAL TESTING. RECORD PUMP PERFORMANCE DATA AD PROVIDE START-UP-REPORT.
- 11 REPLACE PUMP INTO SERVICE.
- 12 REPEAT PROCEDURE FOR NEXT PUMP.

10 10TH STREET, SUITE 1400
ATLANTA, GA 30309
GA LIC # PEF000350 (EXP 6/30/2022)

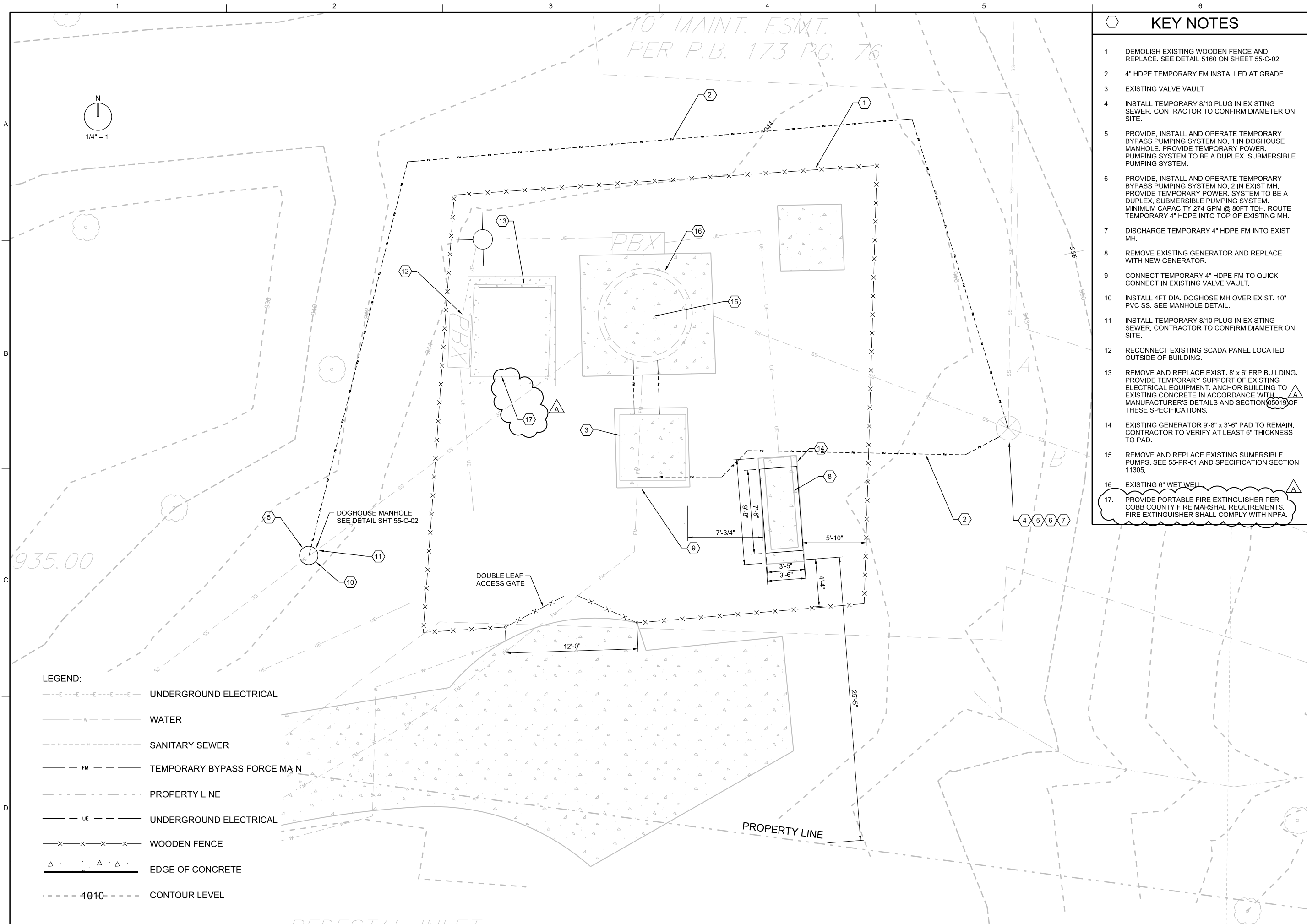
Jacobs
PROCESS MECHANICAL

SY036 -
FY21 MULTIPLE PUMP STATIONS PROJECTS
COBB COUNTY WATER SYSTEM

PLANT ATKINSON ROAD
PUMP STATION
PLAN AND SECTION

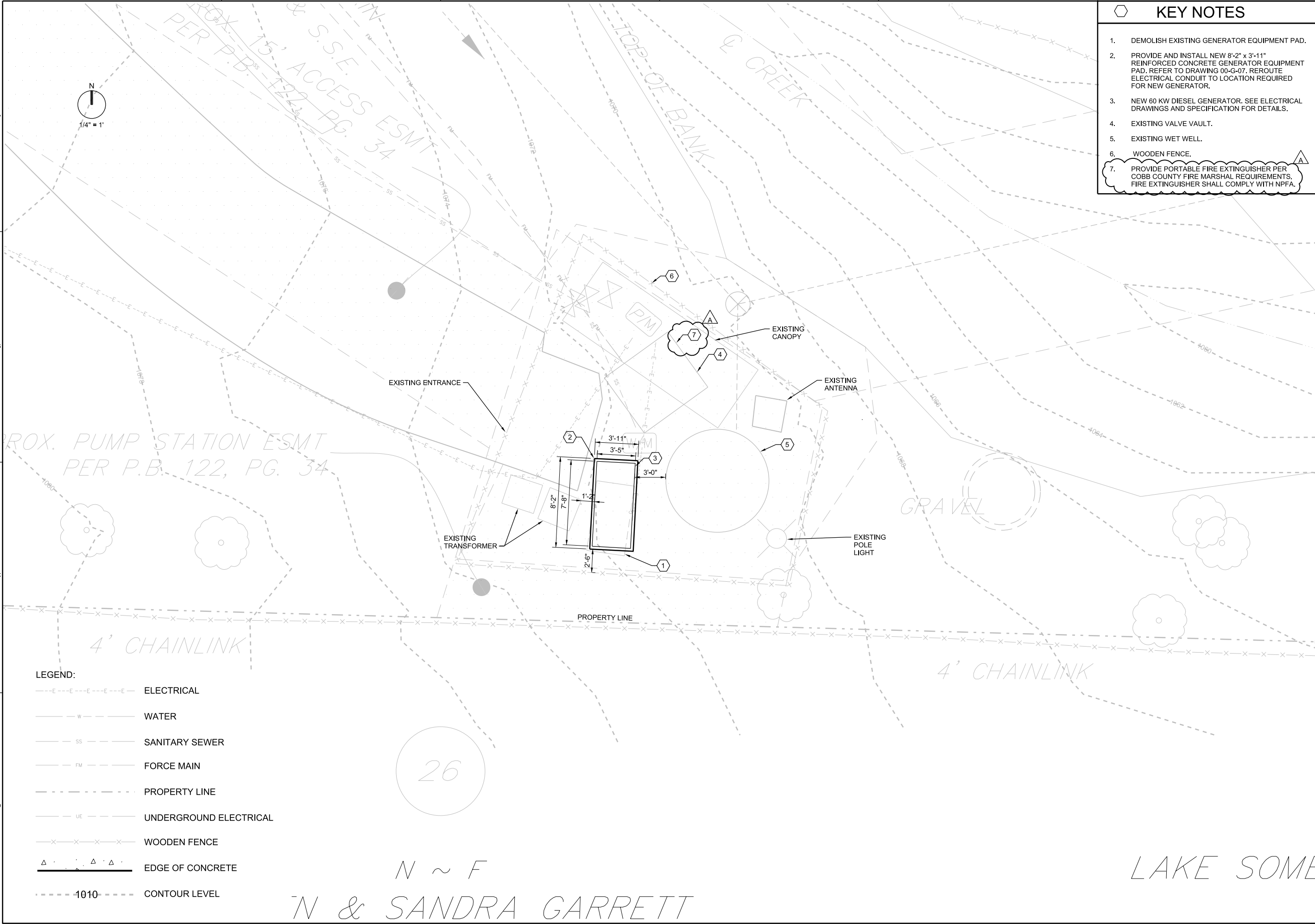
DATE	
PROJ	JJX13603
DWG	45-PR-01
SHEET	23 of 52

BID DOCUMENTS



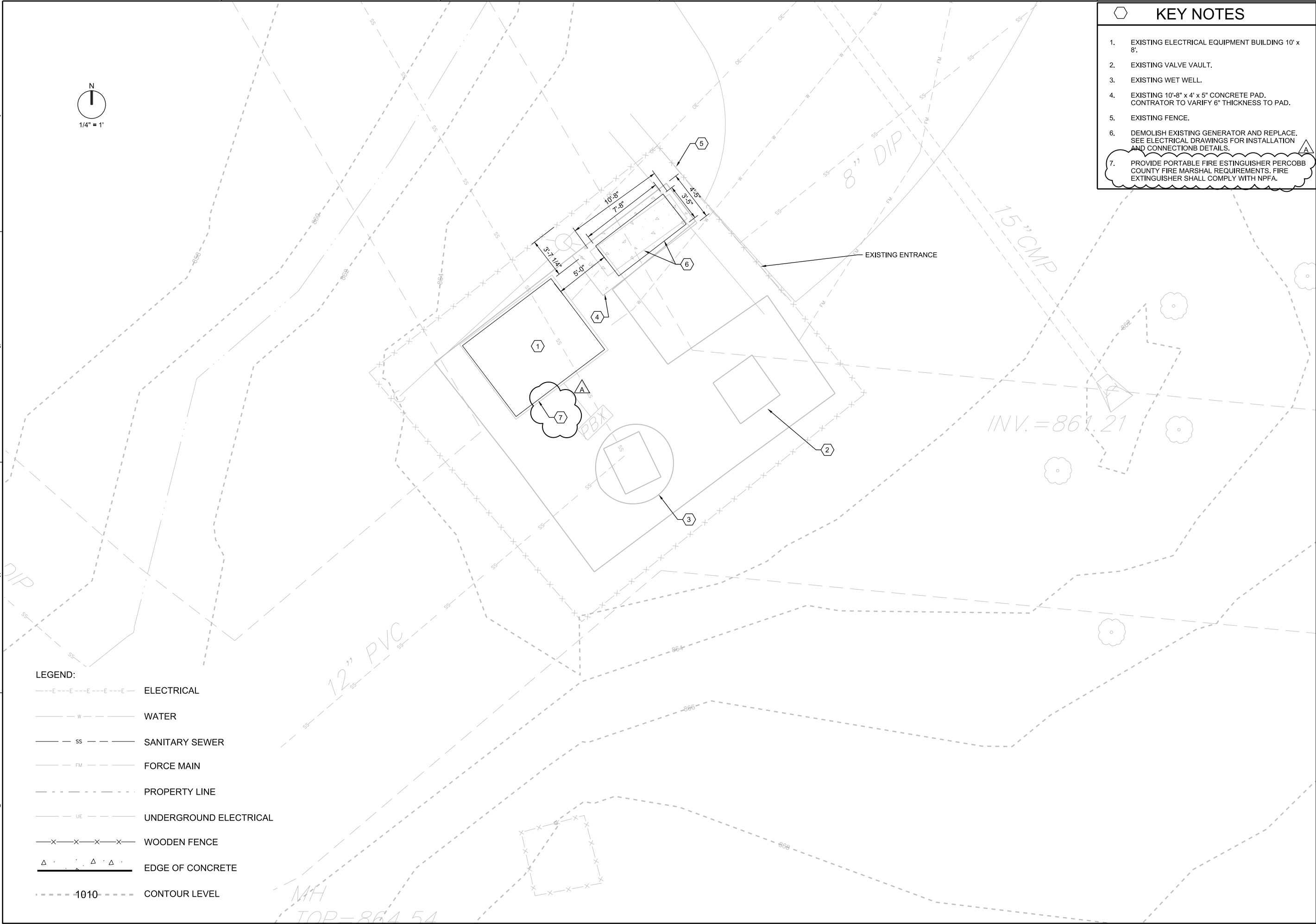
KEY NOTES	
1	DEMOLISH EXISTING WOODEN FENCE AND REPLACE. SEE DETAIL 5160 ON SHEET 55-C-02.
2	4" HDPE TEMPORARY FM INSTALLED AT GRADE.
3	EXISTING VALVE VAULT
4	INSTALL TEMPORARY 8/10 PLUG IN EXISTING SEWER. CONTRACTOR TO CONFIRM DIAMETER ON SITE.
5	PROVIDE, INSTALL AND OPERATE TEMPORARY BYPASS PUMPING SYSTEM NO. 1 IN DOGHOUSE MANHOLE. PROVIDE TEMPORARY POWER. PUMPING SYSTEM TO BE A DUPLEX, SUBMERSIBLE PUMPING SYSTEM.
6	PROVIDE, INSTALL AND OPERATE TEMPORARY BYPASS PUMPING SYSTEM NO. 2 IN EXIST. MH. PROVIDE TEMPORARY POWER. SYSTEM TO BE A DUPLEX, SUBMERSIBLE PUMPING SYSTEM. MINIMUM CAPACITY 274 GPM @ 80FT TDH. ROUTE TEMPORARY 4" HDPE INTO TOP OF EXISTING MH.
7	DISCHARGE TEMPORARY 4" HDPE FM INTO EXIST. MH.
8	REMOVE EXISTING GENERATOR AND REPLACE WITH NEW GENERATOR.
9	CONNECT TEMPORARY 4" HDPE FM TO QUICK CONNECT IN EXISTING VALVE VAULT.
10	INSTALL 4FT DIA. DOGHOUSE MH OVER EXIST. 10" PVC SS. SEE MANHOLE DETAIL.
11	INSTALL TEMPORARY 8/10 PLUG IN EXISTING SEWER. CONTRACTOR TO CONFIRM DIAMETER ON SITE.
12	RECONNECT EXISTING SCADA PANEL LOCATED OUTSIDE OF BUILDING.
13	REMOVE AND REPLACE EXIST. 8' x 6' FRP BUILDING. PROVIDE TEMPORARY SUPPORT OF EXISTING ELECTRICAL EQUIPMENT. ANCHOR BUILDING TO EXISTING CONCRETE IN ACCORDANCE WITH MANUFACTURER'S DETAILS AND SECTION 05019 OF THESE SPECIFICATIONS.
14	EXISTING GENERATOR 9'-8" x 3'-6" PAD TO REMAIN. CONTRACTOR TO VERIFY AT LEAST 6" THICKNESS TO PAD.
15	REMOVE AND REPLACE EXISTING SUMERSIBLE PUMPS. SEE 55-PR-01 AND SPECIFICATION SECTION 11305.
16	EXISTING 6" WET WELL
17.	PROVIDE PORTABLE FIRE EXTINGUISHER PER COBB COUNTY FIRE MARSHAL REQUIREMENTS. FIRE EXTINGUISHER SHALL COMPLY WITH NPFA.

10 10TH STREET, SUITE 1400 ATLANTA, GA 30309 GA LIC # PEF000350 (EXP 6/30/2022)		S5036 - FY21 MULTIPLE PUMP STATIONS PROJECTS COBB COUNTY WATER SYSTEM GEORGIA																																																																																																																																																																																																																																																																																																																																																																																																																																																																																																																																																																																																																																																																																																																																																																																																																																																																																																																																																																																																																																																																																																																																																																																											
---	--	--	--	--	--	--	--	--	--	--	--	--	--	--	--	--	--	--	--	--	--	--	--	--	--	--	--	--	--	--	--	--	--	--	--	--	--	--	--	--	--	--	--	--	--	--	--	--	--	--	--	--	--	--	--	--	--	--	--	--	--	--	--	--	--	--	--	--	--	--	--	--	--	--	--	--	--	--	--	--	--	--	--	--	--	--	--	--	--	--	--	--	--	--	--	--	--	--	--	--	--	--	--	--	--	--	--	--	--	--	--	--	--	--	--	--	--	--	--	--	--	--	--	--	--	--	--	--	--	--	--	--	--	--	--	--	--	--	--	--	--	--	--	--	--	--	--	--	--	--	--	--	--	--	--	--	--	--	--	--	--	--	--	--	--	--	--	--	--	--	--	--	--	--	--	--	--	--	--	--	--	--	--	--	--	--	--	--	--	--	--	--	--	--	--	--	--	--	--	--	--	--	--	--	--	--	--	--	--	--	--	--	--	--	--	--	--	--	--	--	--	--	--	--	--	--	--	--	--	--	--	--	--	--	--	--	--	--	--	--	--	--	--	--	--	--	--	--	--	--	--	--	--	--	--	--	--	--	--	--	--	--	--	--	--	--	--	--	--	--	--	--	--	--	--	--	--	--	--	--	--	--	--	--	--	--	--	--	--	--	--	--	--	--	--	--	--	--	--	--	--	--	--	--	--	--	--	--	--	--	--	--	--	--	--	--	--	--	--	--	--	--	--	--	--	--	--	--	--	--	--	--	--	--	--	--	--	--	--	--	--	--	--	--	--	--	--	--	--	--	--	--	--	--	--	--	--	--	--	--	--	--	--	--	--	--	--	--	--	--	--	--	--	--	--	--	--	--	--	--	--	--	--	--	--	--	--	--	--	--	--	--	--	--	--	--	--	--	--	--	--	--	--	--	--	--	--	--	--	--	--	--	--	--	--	--	--	--	--	--	--	--	--	--	--	--	--	--	--	--	--	--	--	--	--	--	--	--	--	--	--	--	--	--	--	--	--	--	--	--	--	--	--	--	--	--	--	--	--	--	--	--	--	--	--	--	--	--	--	--	--	--	--	--	--	--	--	--	--	--	--	--	--	--	--	--	--	--	--	--	--	--	--	--	--	--	--	--	--	--	--	--	--	--	--	--	--	--	--	--	--	--	--	--	--	--	--	--	--	--	--	--	--	--	--	--	--	--	--	--	--	--	--	--	--	--	--	--	--	--	--	--	--	--	--	--	--	--	--	--	--	--	--	--	--	--	--	--	--	--	--	--	--	--	--	--	--	--	--	--	--	--	--	--	--	--	--	--	--	--	--	--	--	--	--	--	--	--	--	--	--	--	--	--	--	--	--	--	--	--	--	--	--	--	--	--	--	--	--	--	--	--	--	--	--	--	--	--	--	--	--	--	--	--	--	--	--	--	--	--	--	--	--	--	--	--	--	--	--	--	--	--	--	--	--	--	--	--	--	--	--	--	--	--	--	--	--	--	--	--	--	--	--	--	--	--	--	--	--	--	--	--	--	--	--	--	--	--	--	--	--	--	--	--	--	--	--	--	--	--	--	--	--	--	--	--	--	--	--	--	--	--	--	--	--	--	--	--	--	--	--	--	--	--	--	--	--	--	--	--	--	--	--	--	--	--	--	--	--	--	--	--	--	--	--	--	--	--	--	--	--	--	--	--	--	--	--	--	--	--	--	--	--	--	--	--	--	--	--	--	--	--	--	--	--	--	--	--	--	--	--	--	--	--	--	--	--	--	--	--	--	--	--	--	--	--	--	--	--	--	--	--	--	--	--	--	--	--	--	--	--	--	--	--	--	--	--	--	--	--	--	--	--	--	--	--	--	--	--	--	--	--	--	--	--	--	--	--	--	--	--	--	--	--	--	--	--	--	--	--	--	--	--	--	--	--	--	--	--	--	--	--	--	--	--	--	--	--	--	--	--	--	--	--	--	--	--	--	--	--	--	--	--	--	--	--	--	--	--	--	--	--	--	--	--	--	--	--	--	--	--	--	--	--	--	--	--	--	--	--	--	--	--	--	--	--	--	--	--	--	--	--	--	--	--	--	--	--	--	--	--	--	--	--	--	--	--	--	--	--	--	--	--	--	--	--	--	--	--	--	--	--	--	--	--	--	--	--	--	--	--	--	--	--	--	--	--	--	--	--	--	--	--	--	--	--	--	--	--	--	--	--	--	--	--	--	--	--	--	--	--	--	--	--	--	--	--	--	--	--	--	--	--	--	--	--	--	--	--	--	--	--	--	--	--	--	--	--	--	--	--	--	--	--	--	--	--	--	--	--	--	--	--	--	--	--	--	--	--	--	--	--	--	--	--	--	--	--	--	--	--	--	--	--	--	--	--	--	--	--	--	--	--	--	--	--	--	--	--	--	--	--	--	--	--	--	--	--	--	--	--	--	--	--	--	--	--	--	--	--	--	--	--	--	--	--	--	--	--	--	--	--	--	--	--	--	--	--	--	--	--	--	--	--	--	--	--	--	--	--	--	--	--	--	--	--	--	--	--	--	--	--	--	--	--	--	--	--	--	--	--	--	--	--	--	--	--	--	--	--	--	--	--	--	--	--	--	--	--



- ### KEY NOTES
- DEMOLISH EXISTING GENERATOR EQUIPMENT PAD.
 - PROVIDE AND INSTALL NEW 8'-2" x 3'-11" REINFORCED CONCRETE GENERATOR EQUIPMENT PAD. REFER TO DRAWING 00-G-07. REROUTE ELECTRICAL CONDUIT TO LOCATION REQUIRED FOR NEW GENERATOR.
 - NEW 60 KW DIESEL GENERATOR. SEE ELECTRICAL DRAWINGS AND SPECIFICATION FOR DETAILS.
 - EXISTING VALVE VAULT.
 - EXISTING WET WELL.
 - WOODEN FENCE.
 - PROVIDE PORTABLE FIRE EXTINGUISHER PER COBB COUNTY FIRE MARSHAL REQUIREMENTS. FIRE EXTINGUISHER SHALL COMPLY WITH NPFA.

10 10TH STREET, SUITE 1400 ATLANTA, GA 30309 GA LIC # PEF000350 (EXP 6/30/2022)		FY21 MULTIPLE PUMP STATIONS PROJECTS COBB COUNTY WATER SYSTEM		S5036 - GEORGIA	
JACOBS		CIVIL		WEST HAMPTON #1 PUMP STATION SITE LAYOUT	
1/4"=1'		VERIFY SCALE		BAR IS ONE INCH ON ORIGINAL DRAWING.	
DATE		PROJ		DWG	
10/7/2020		JJX13603		65-C-01	
SHEET		41 of 52		FILENAME: 65-C-01_JJX13603.dgn	
PLOT DATE: 10/7/2020		PLOT TIME: 3:25:47 PM		BID DOCUMENTS	
J PACHECO		E GRIGGS		T WYNN	
DSGN		NO. DATE		REVISION	
A		09/2020		KEYNOTE NO. 7 ADDED	
DR		CHK		APVD	
BY		EG		BY	
I LILLEY		APVD		BY	



- KEY NOTES
1.

EXISTING ELECTRICAL EQUIPMENT BUILDING 10' x 8'.
2.

EXISTING VALVE VAULT.
3.

EXISTING WET WELL.
4.

EXISTING 10'-8" x 4' x 5" CONCRETE PAD.
CONTRATOR TO VERIFY 6" THICKNESS TO PAD.
5.

EXISTING FENCE.
6.

DEMOLISH EXISTING GENERATOR AND REPLACE.
SEE ELECTRICAL DRAWINGS FOR INSTALLATION
AND CONNECTIONB DETAILS.
7.

PROVIDE PORTABLE FIRE ESTINGUISHER PERCOBB
COUNTY FIRE MARSHAL REQUIREMENTS. FIRE
EXTINGUISHER SHALL COMPLY WITH NPFA.

- LEGEND:
- ELECTRICAL
- WATER
- SANITARY SEWER
- FORCE MAIN
- PROPERTY LINE
- UNDERGROUND ELECTRICAL
- WOODEN FENCE
- EDGE OF CONCRETE
- CONTOUR LEVEL

10 10TH STREET, SUITE 1400
ATLANTA, GA 30309
GA LIC # PEF000350 (EXP 6/30/2022)

SS036 -
FY21 MULTIPLE PUMP STATIONS PROJECTS
COBB COUNTY WATER SYSTEM
GEORGIA

CIVIL
WOOD VALLEY
PUMP STATION LAYOUT

J PACHECO
DR

E GRIGGS
CHK

I LILLEY
APVD

T WYNN
APVD

NO. DATE

09/2020 A

KEYNOTE NO. 7 ADDED

EG BY

APVD

1/4"=1'

VERIFY SCALE

BAR IS ONE INCH ON
ORIGINAL DRAWING.
0 1"

DATE

PROJ JJX13603

DWG 75-C-01

SHEET 49 of 52

BID DOCUMENTS

pw:\projectwise.ch2m.com\DEN003\Documents\JJX13603 - CCWS - CM Services 2017 - 18

FILENAME: 75-C-01_JJX13603.dgn

PLOT DATE: 10/7/2020

PLOT TIME: 3:28:00 PM