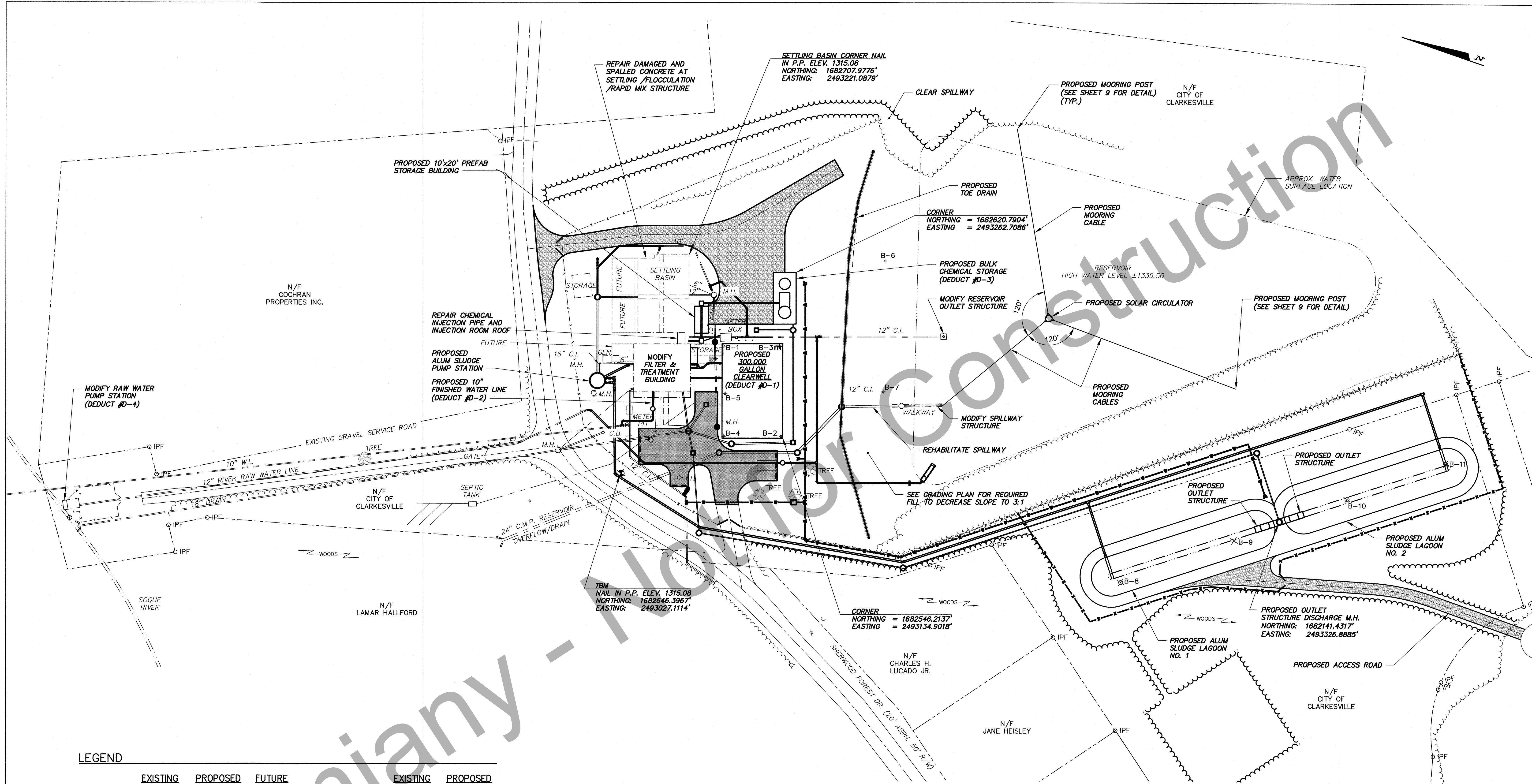
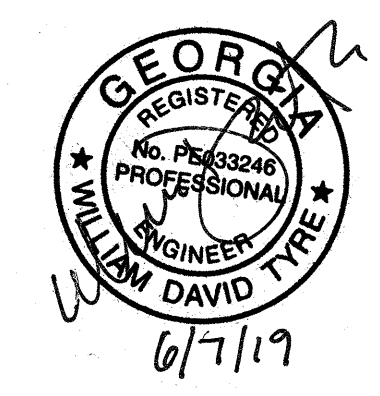
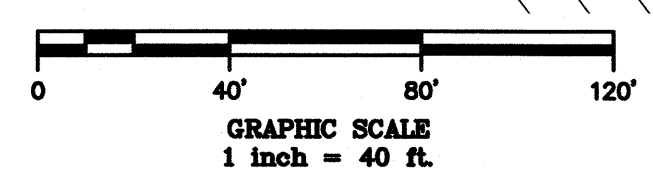


P:\Clarkesville\151985 WTP - USDA\Drawings\151985 WTP SITE.DWG



LEGEND

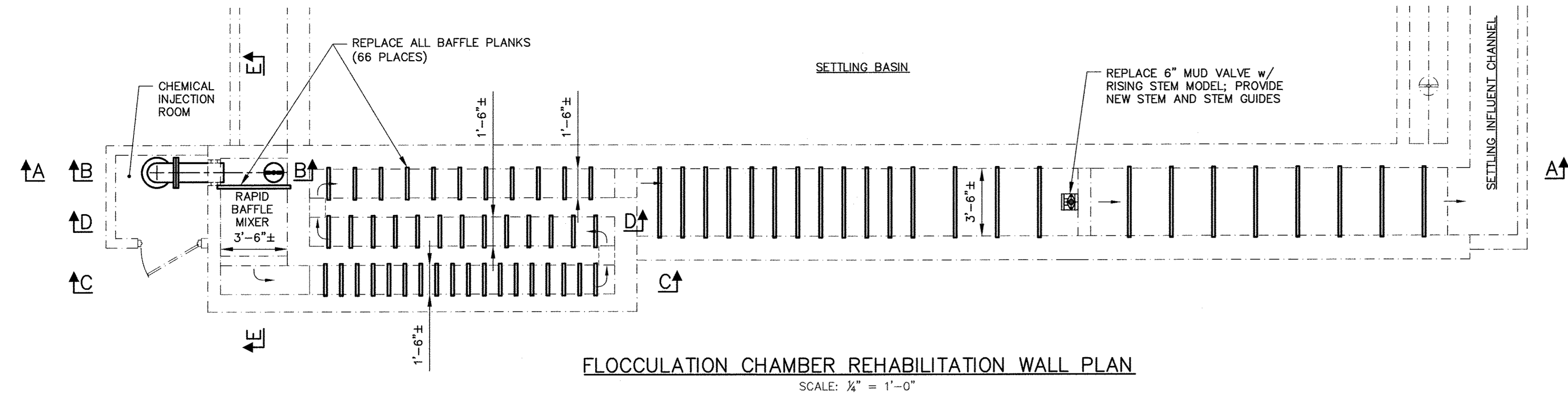
	EXISTING	PROPOSED	FUTURE		EXISTING	PROPOSED
STRUCTURE	[Dashed Box]	[Solid Box]	[Dotted Box]	FENCE	[X-X Line]	[X-X Line]
				PROPERTY LINE	[Dashed Line]	[Dashed Line]
				TREE LINE	[Wavy Line]	[Wavy Line]
ROADWAY	[Solid Line]	[Solid Line]	[Solid Line]	C.I. OR D.I. PIPE	[Line with 'OR']	[Line with 'OR']
				CONC. OR V.C. PIPE	[Line with 'OR']	[Line with 'OR']
ROADWAY OVERLAY	[Dashed Line]	[Dashed Line]	[Dashed Line]	CHEMICAL LINE	[Line with 'C']	[Line with 'C']
				REUSE LINE	[Line with 'R']	[Line with 'R']
GRAVEL DRIVE	[Dashed Line]	[Dashed Line]	[Dashed Line]	WATER LINE	[Line with 'W']	[Line with 'W']
SIDEWALK	[Dashed Line]	[Dashed Line]	[Dashed Line]	YARD HYDRANT	[Line with 'Y.H.']	[Line with 'Y.H.']
				CLEANOUT	[Line with 'C.O.']	[Line with 'C.O.']
				SOIL BORE	[Line with 'B-1']	[Line with 'B-1']



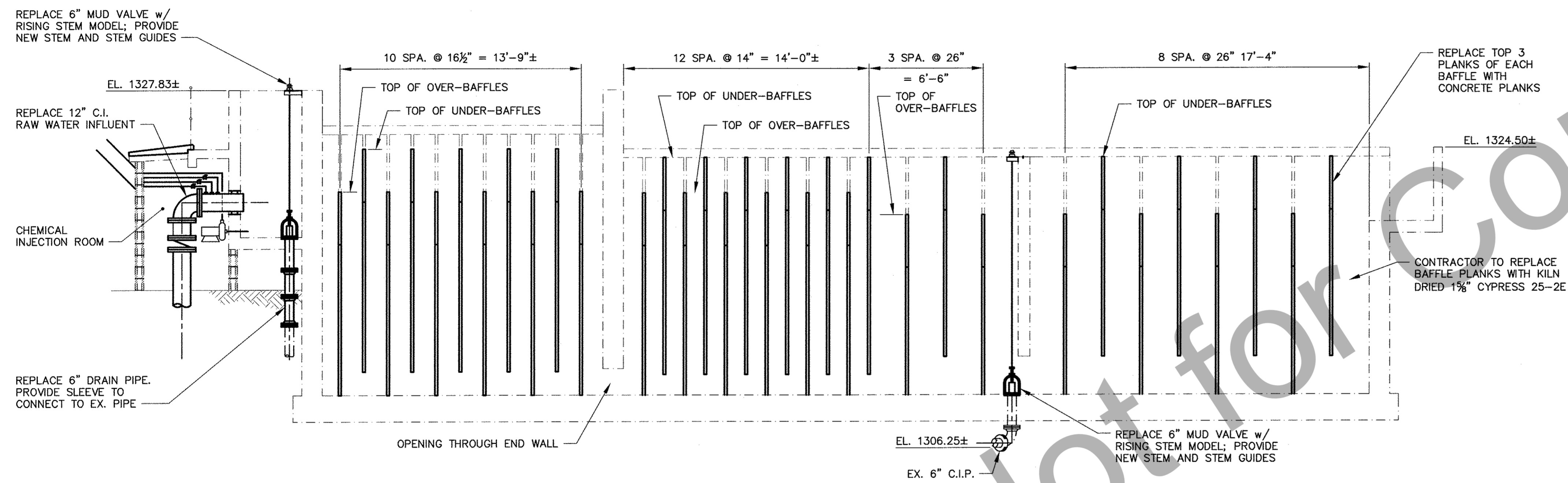
REVISIONS		CITY OF CLARKESVILLE, GEORGIA WATER SYSTEM IMPROVEMENTS	
		ADDITIONS TO WATER TREATMENT PLANT	
		OVERALL SITE PLAN	
DRAWN	CHECKED	SCALE: AS SHOWN	DATE: MAY 2018
GKA	WDT		
TURNIPSEED ENGINEERS		ATLANTA AUGUSTA ST. SIMONS ISLAND	
		SHEET 2 OF 48	

NOTES

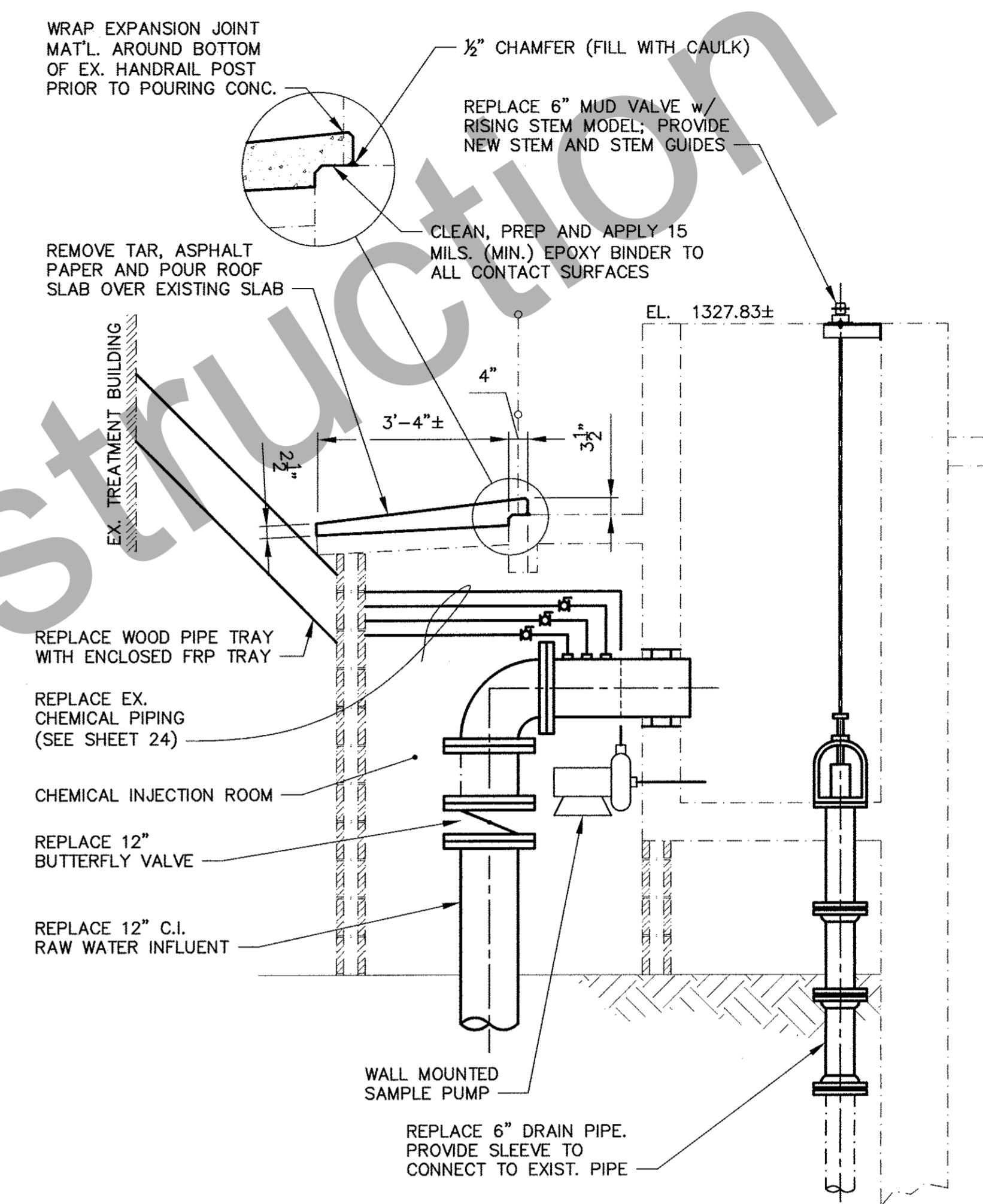
1. ALL PLANKS ARE 1 5/8" THICK.
2. REMOVE GROUT IN BAFFLE SLOTS AS NECESSARY TO INSTALL BAFFLES.



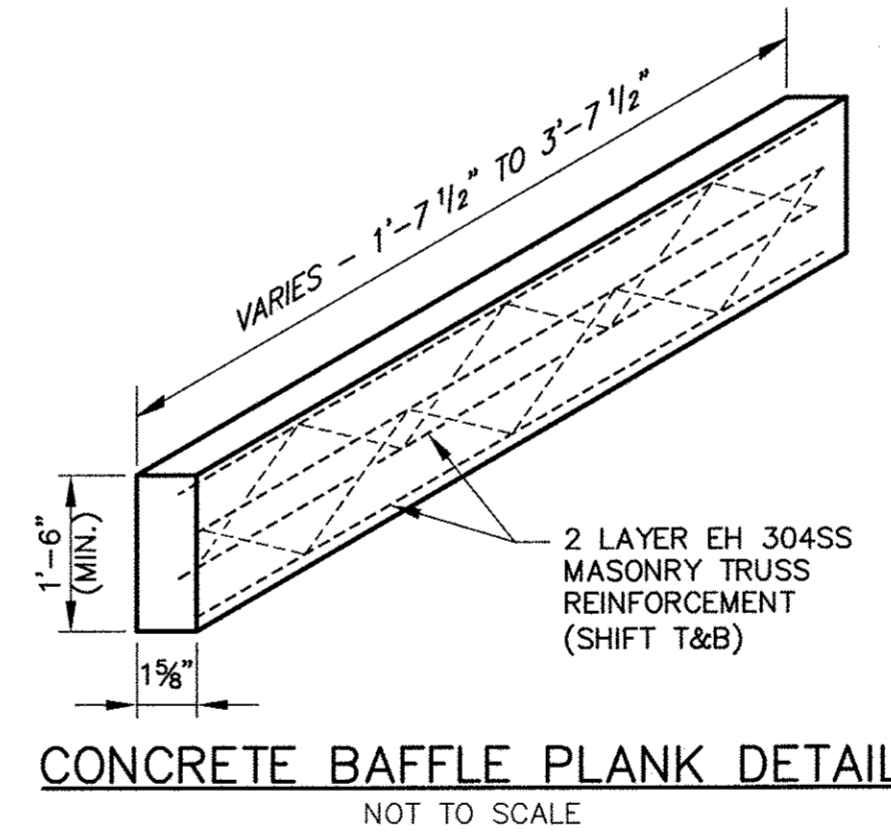
FLOCCULATION CHAMBER REHABILITATION WALL PLAN
SCALE: 1/4" = 1'-0"



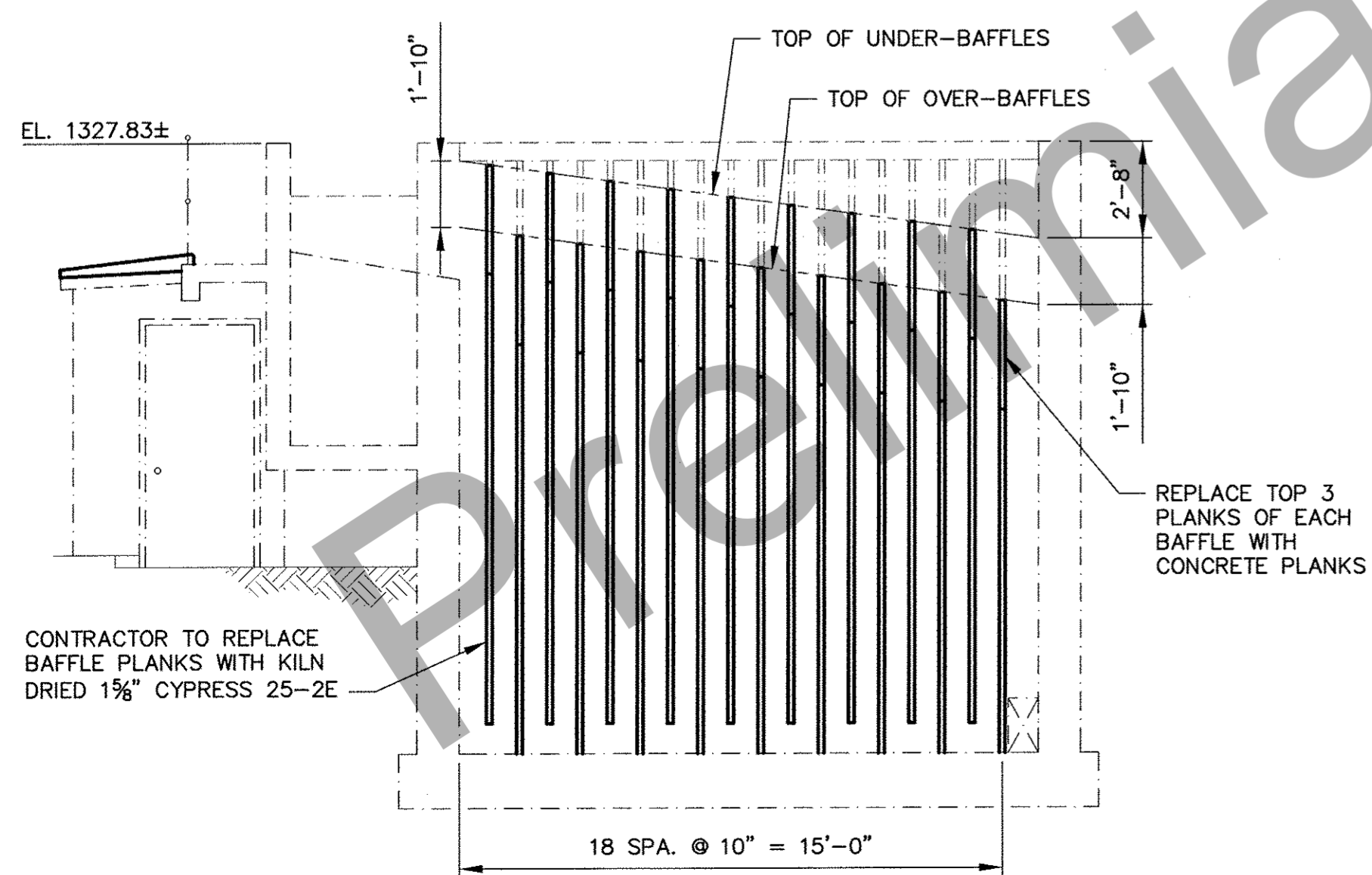
SECTION A-A
SCALE: 1/4" = 1'-0"



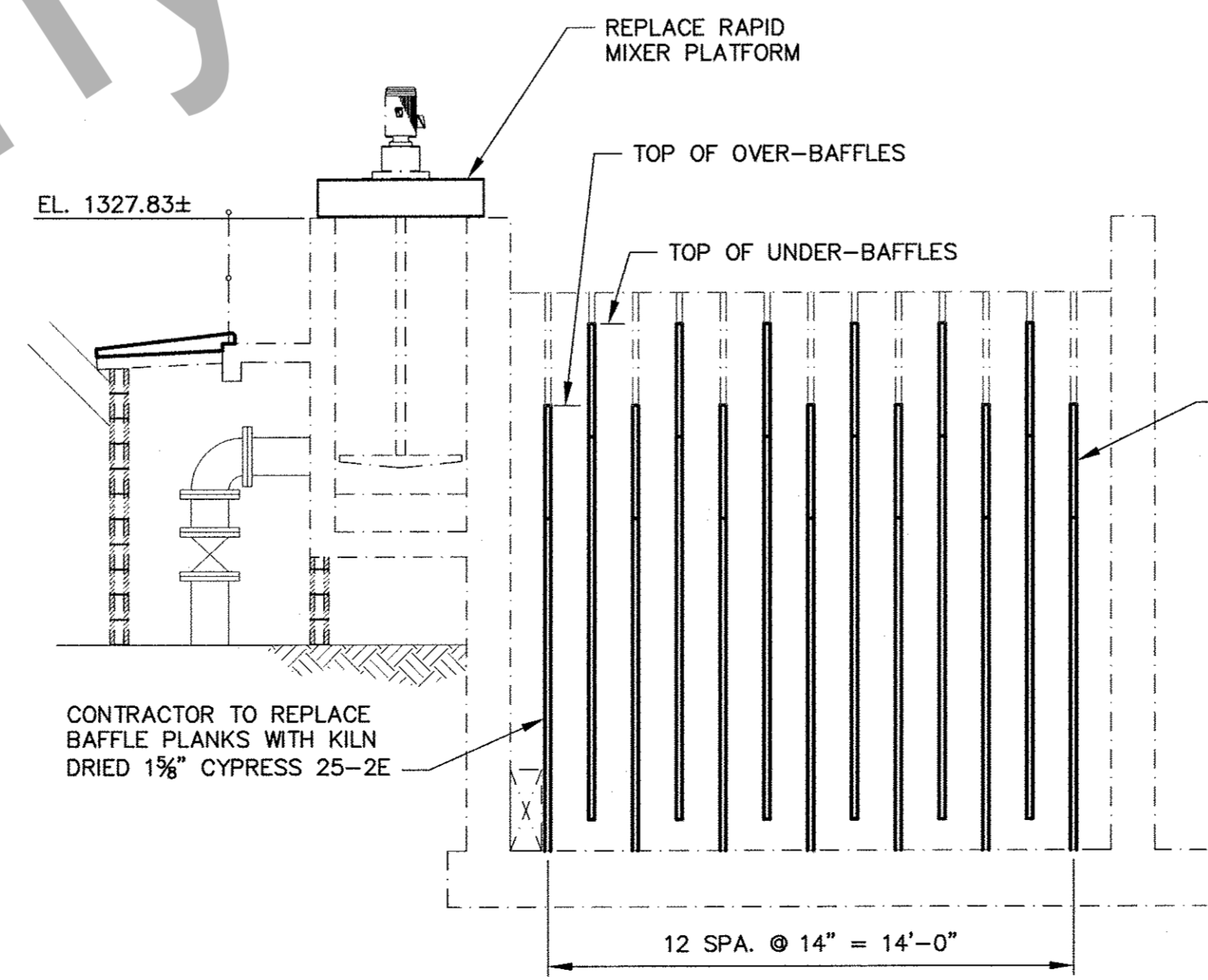
SECTION B-B
SCALE: 1/2" = 1'-0"



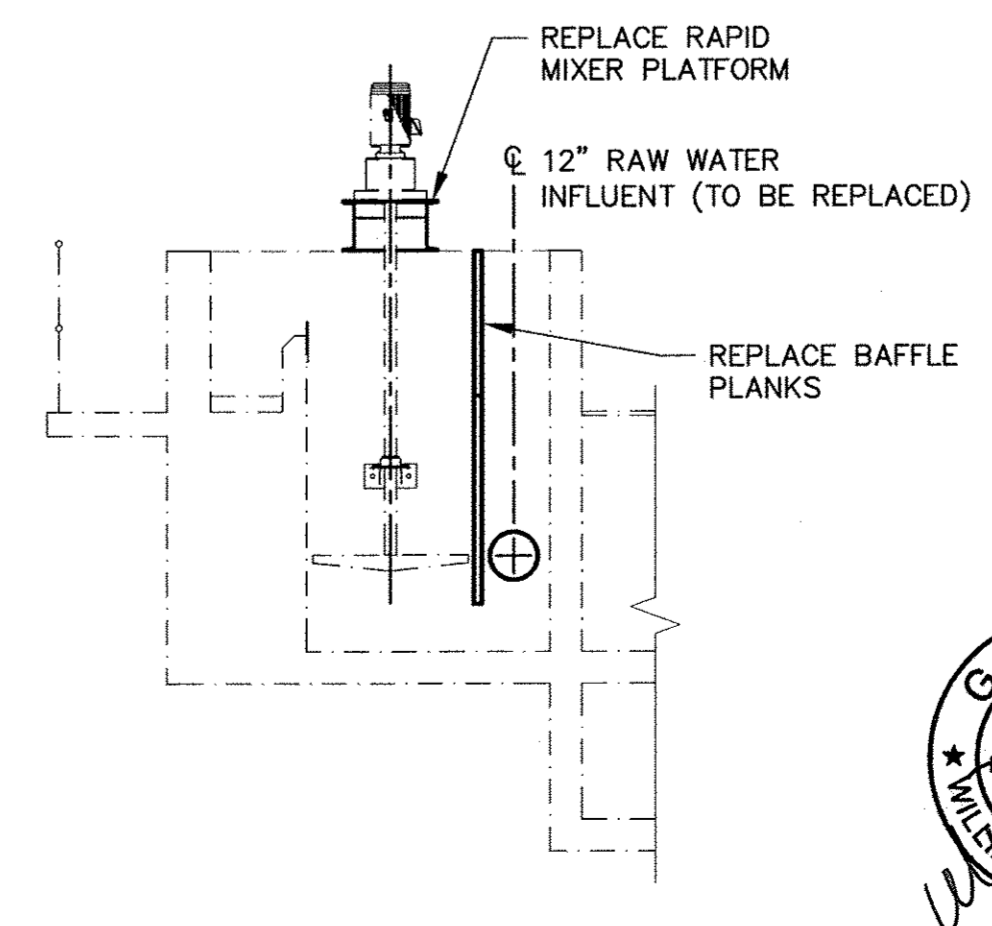
CONCRETE BAFFLE PLANK DETAIL
NOT TO SCALE



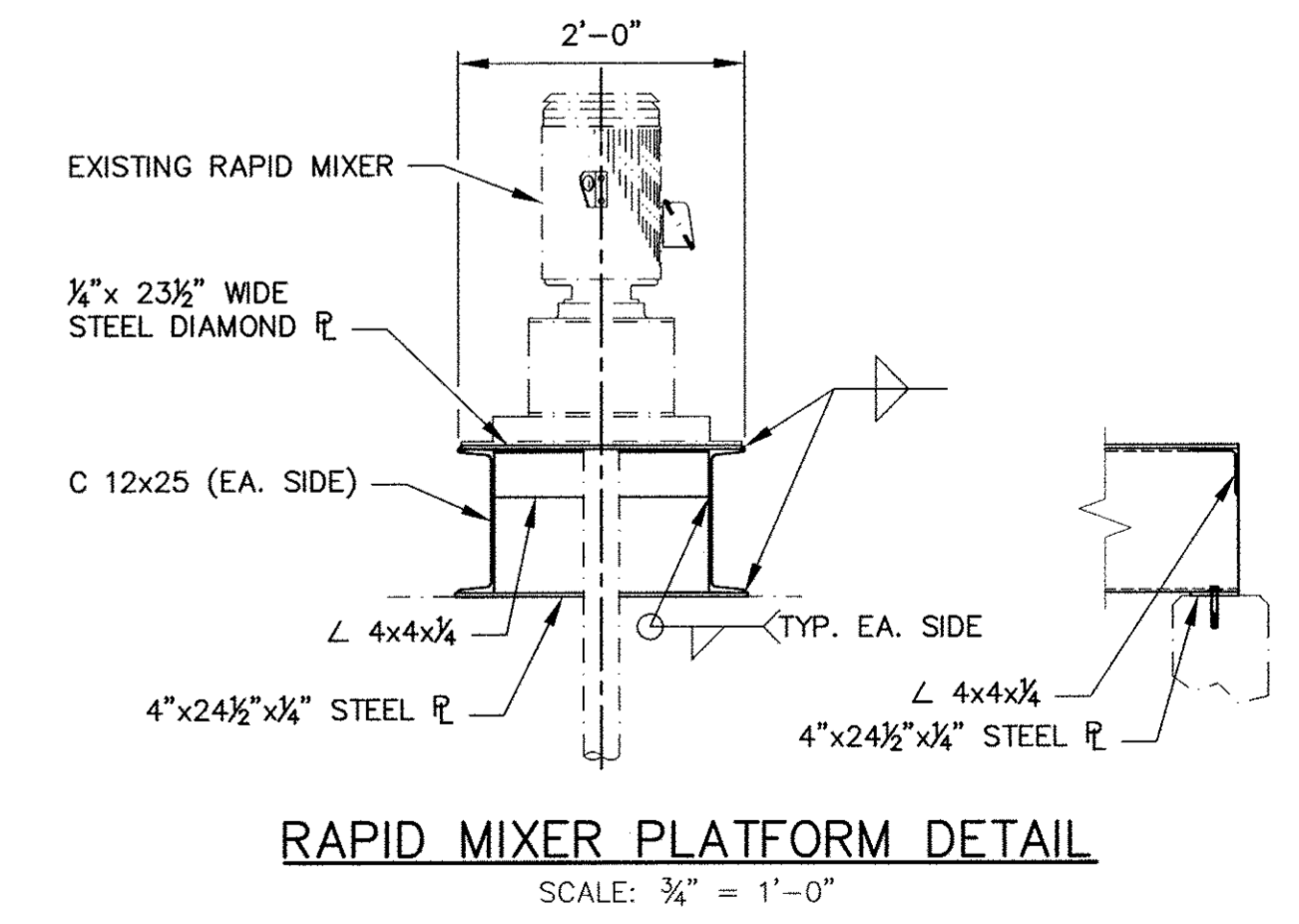
SECTION C-C
SCALE: 1/4" = 1'-0"



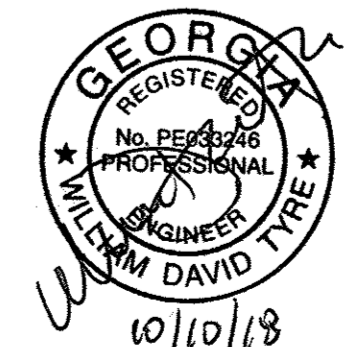
SECTION D-D
SCALE: 1/4" = 1'-0"



SECTION E-E
SCALE: 1/4" = 1'-0"



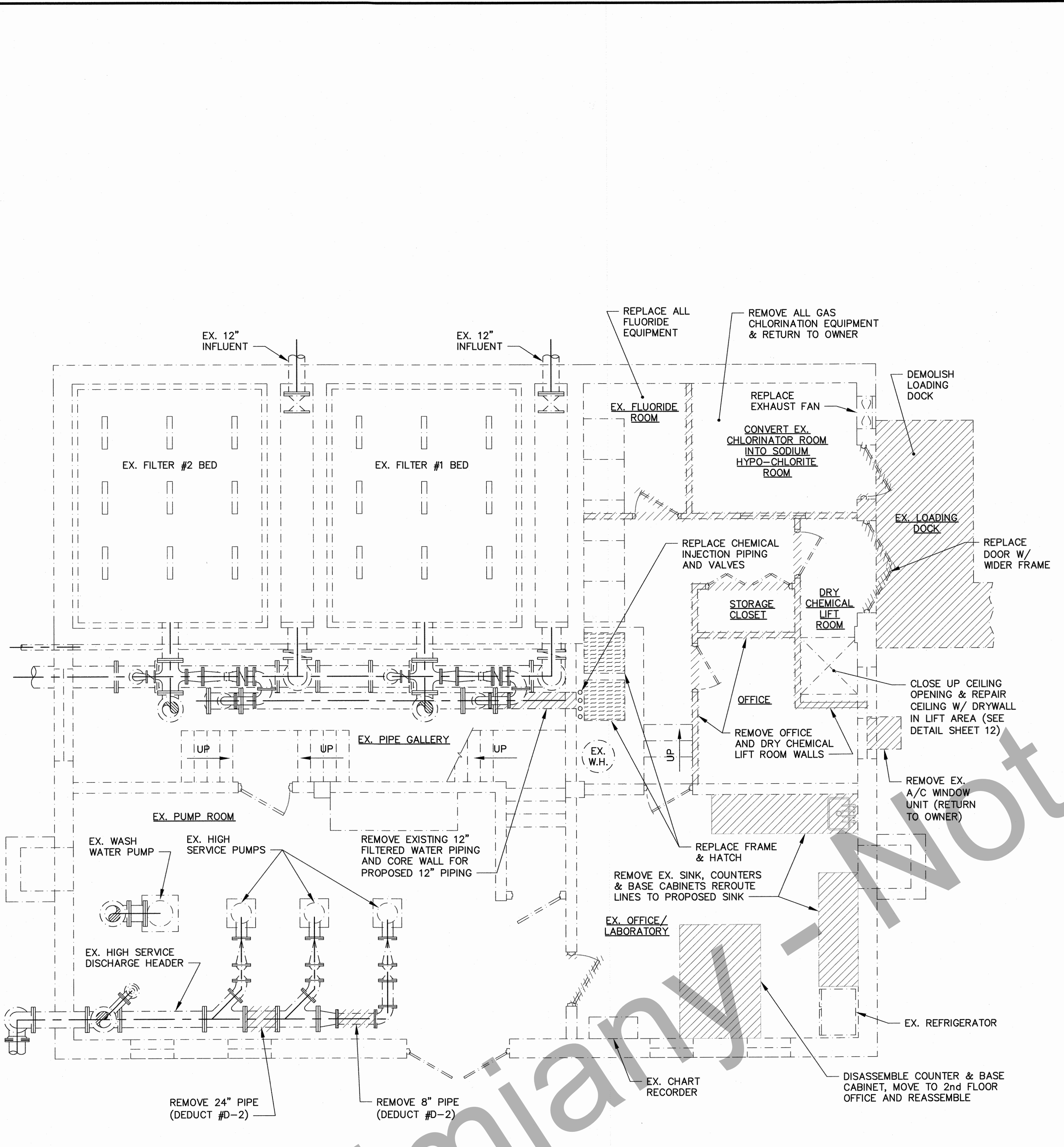
RAPID MIXER PLATFORM DETAIL
SCALE: 3/4" = 1'-0"



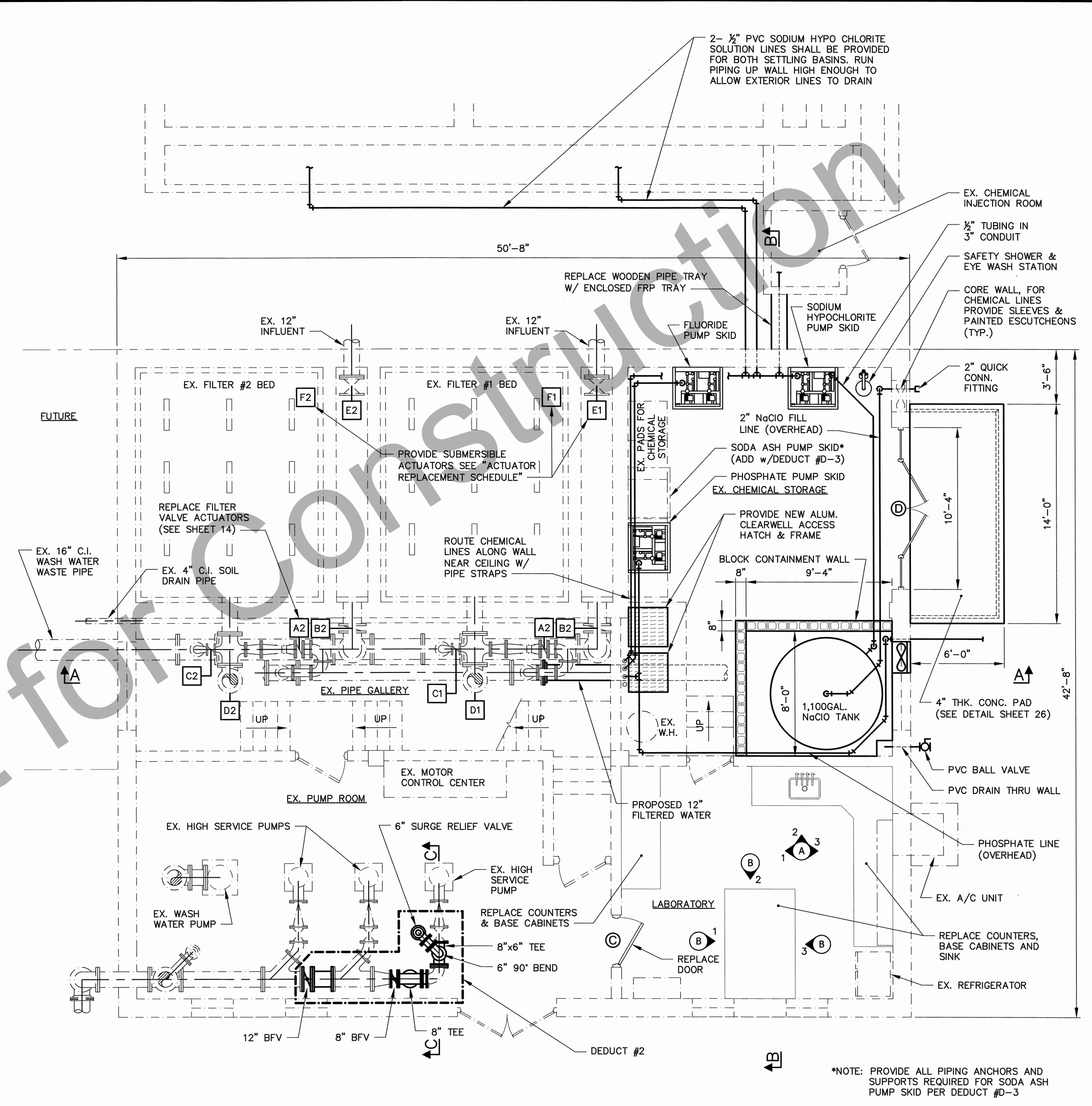
REVISIONS		CITY OF CLARKESVILLE, GEORGIA WATER SYSTEM IMPROVEMENTS	
		ADDITIONS TO WATER TREATMENT PLANT	
		FLOCCULATION BASIN MODIFICATIONS PLAN, SECTIONS & DETAILS	
DRAWN	CHECKED	SCALE: AS SHOWN	DATE: MAY 2018
GKA	WDT		
TURNIPSEED ENGINEERS		ATLANTA AUGUSTA ST. SIMONS ISLAND	SHEET 10 OF 44

P:\Clarkesville\151985 WTP - USDA Drawings\151985 SETTLING BASIN - RWPS.DWG

P:\Clarkesville\151985 WTP - USDA Drawings\151985 TREATMENT BUILDING RENOVATIONS.DWG



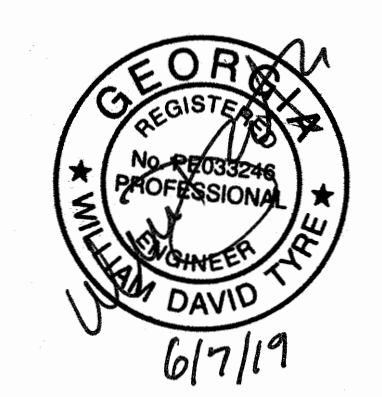
FILTER AND TREATMENT BUILDING FIRST FLOOR DEMOLITION PLAN
SCALE: 1/4" = 1'-0"



FILTER AND TREATMENT BUILDING IMPROVEMENTS FIRST FLOOR PLAN
SCALE: 1/4" = 1'-0"

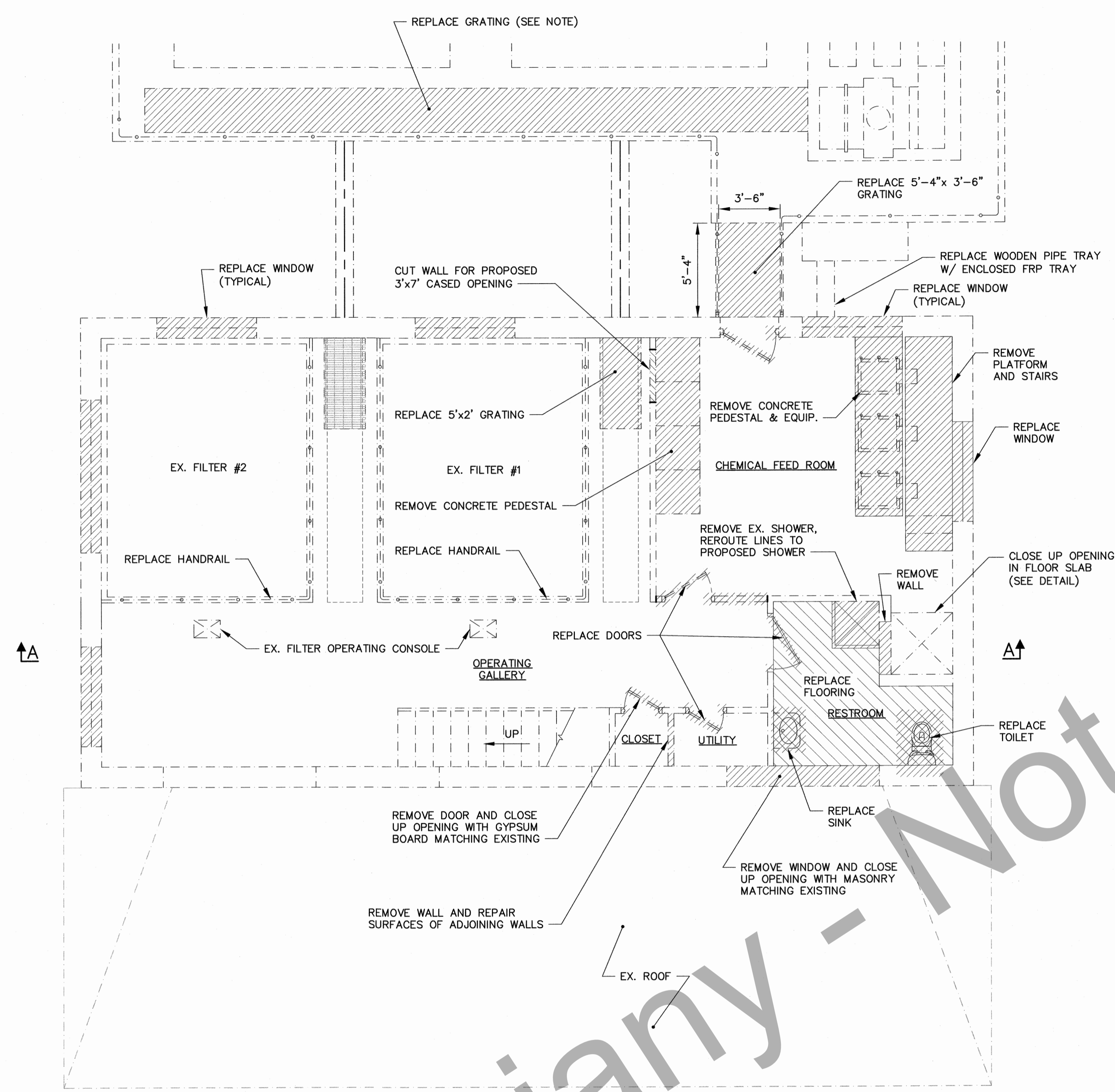
*NOTE: PROVIDE ALL PIPING ANCHORS AND SUPPORTS REQUIRED FOR SODA ASH PUMP SKID PER DEDUCT #D-3

Preliminary - Not for Construction

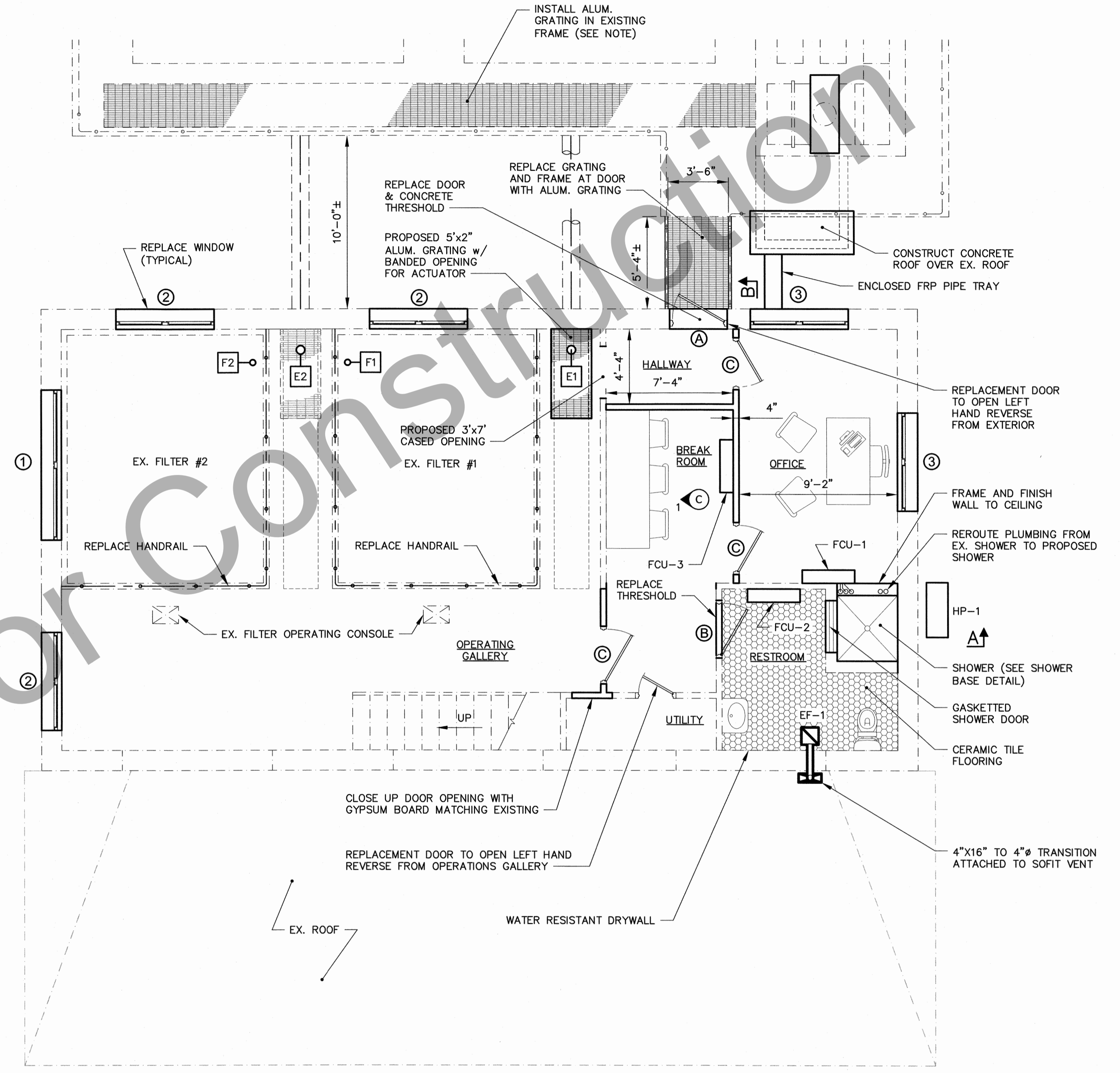


REVISIONS		CITY OF CLARKESVILLE, GEORGIA WATER SYSTEM IMPROVEMENTS ADDITIONS TO WATER TREATMENT PLANT	
		TREATMENT BUILDING FIRST FLOOR MODIFICATION PLAN	
DRAWN	CHECKED	SCALE: AS SHOWN	DATE: MAY 2018
GKA	WDT		
TURNIPSEED ENGINEERS		ATLANTA AUGUSTA ST. SIMONS ISLAND	SHEET 11 OF 48

NOTE
 HAND TOOL CLEAN AND PAINT ALL GRATING SUPPORT FRAMES AND HANDRAILS. MEASURES SHALL BE TAKEN TO PREVENT CHIPS, RUST, PAINT, METAL SHAVINGS AND ANY OTHER FOREIGN MATTER FROM ENTERING BASINS.



SECOND FLOOR DEMOLITION PLAN
 SCALE: 1/4" = 1'-0"



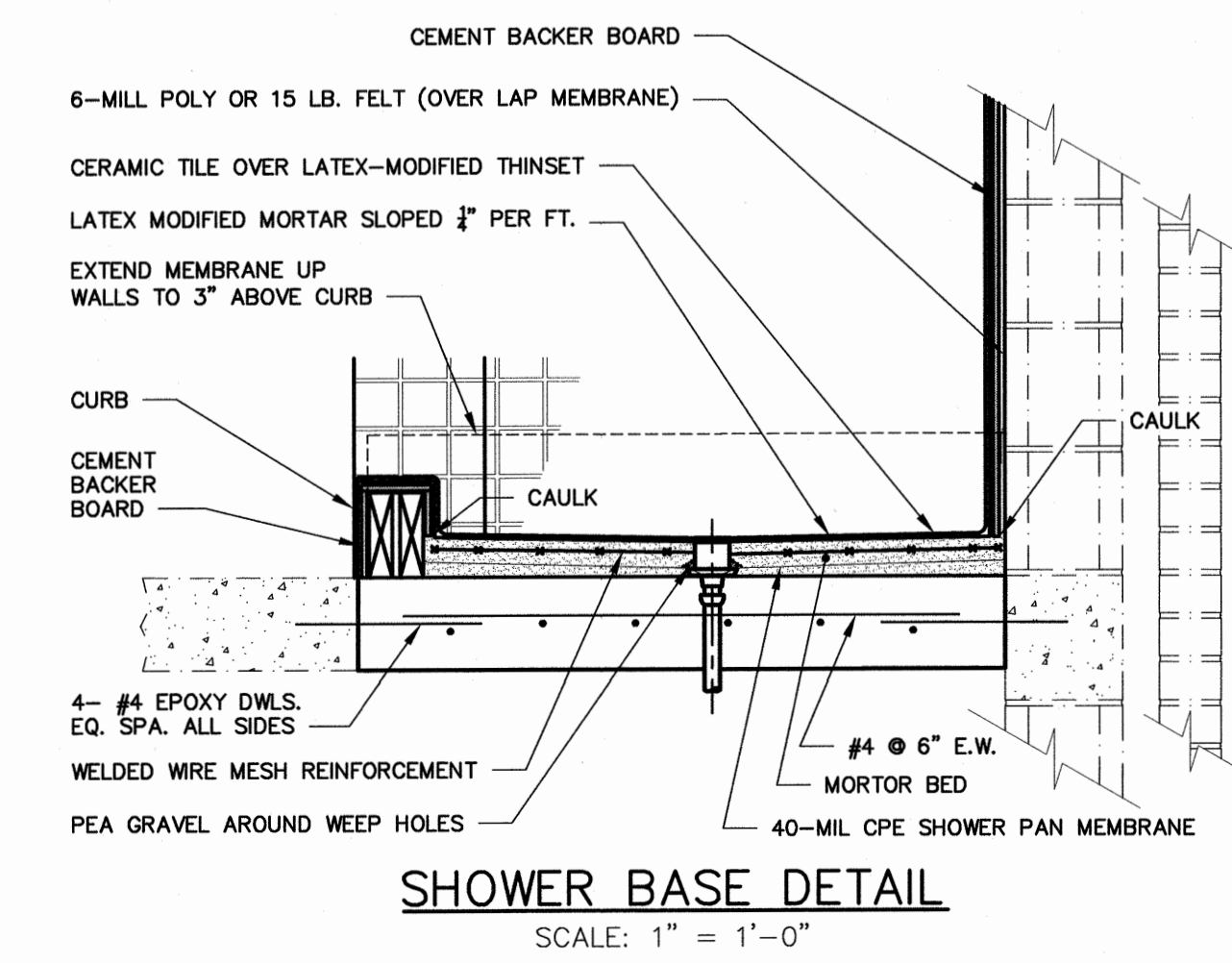
SECOND FLOOR IMPROVEMENTS PLAN
 SCALE: 1/4" = 1'-0"

AIR CONDITIONING SCHEDULE					
MARK	DESCRIPTION	COOLING CAPACITY	CFM	HEATING CAPACITY	MANUFACTURE PRODUCT NO.
FCU-1	WALL MOUNTED FAN COIL UNIT	9,000 BTUs	220	10,900 BTUs	MITSUBISHI MSZ-FH09NA
FCU-2	WALL MOUNTED FAN COIL UNIT	6,000 BTUs	220	8,700 BTUs	MITSUBISHI MSZ-FH06NA
FCU-3	WALL MOUNTED FAN COIL UNIT	6,000 BTUs	220	8,700 BTUs	MITSUBISHI MSZ-FH06NA
HP-1	HEAT PUMP/CONDENSING UNIT	22,000 BTUs	-	24,600 BTUs	MITSUBISHI MXZ-3C24NAHZ2

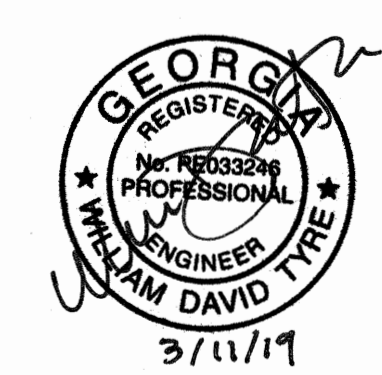
NOTE:
 A/C UNITS SHALL BE FURNISHED WITH 7 DAY PROGRAMMABLE THERMOSTAT, WIRELESS HANDHELD CONTROLLER AND GRILLE KIT. OUTDOOR UNIT TO BE INSTALLED ON CONCRETE PAD. SEE SECTION A-A

EXHAUST FAN SCHEDULE					
MARK	DESCRIPTION	CFM	SP	NOM. VOLTAGE	MANUFACTURE PRODUCT NO.
EF-1	CEILING MOUNT VENTILATOR	115	0.1	120v	BROAN: L100

NOTE: PROVIDE WITH WALL MOUNTED ELECTRONIC VARIABLE SPEED CONTROL

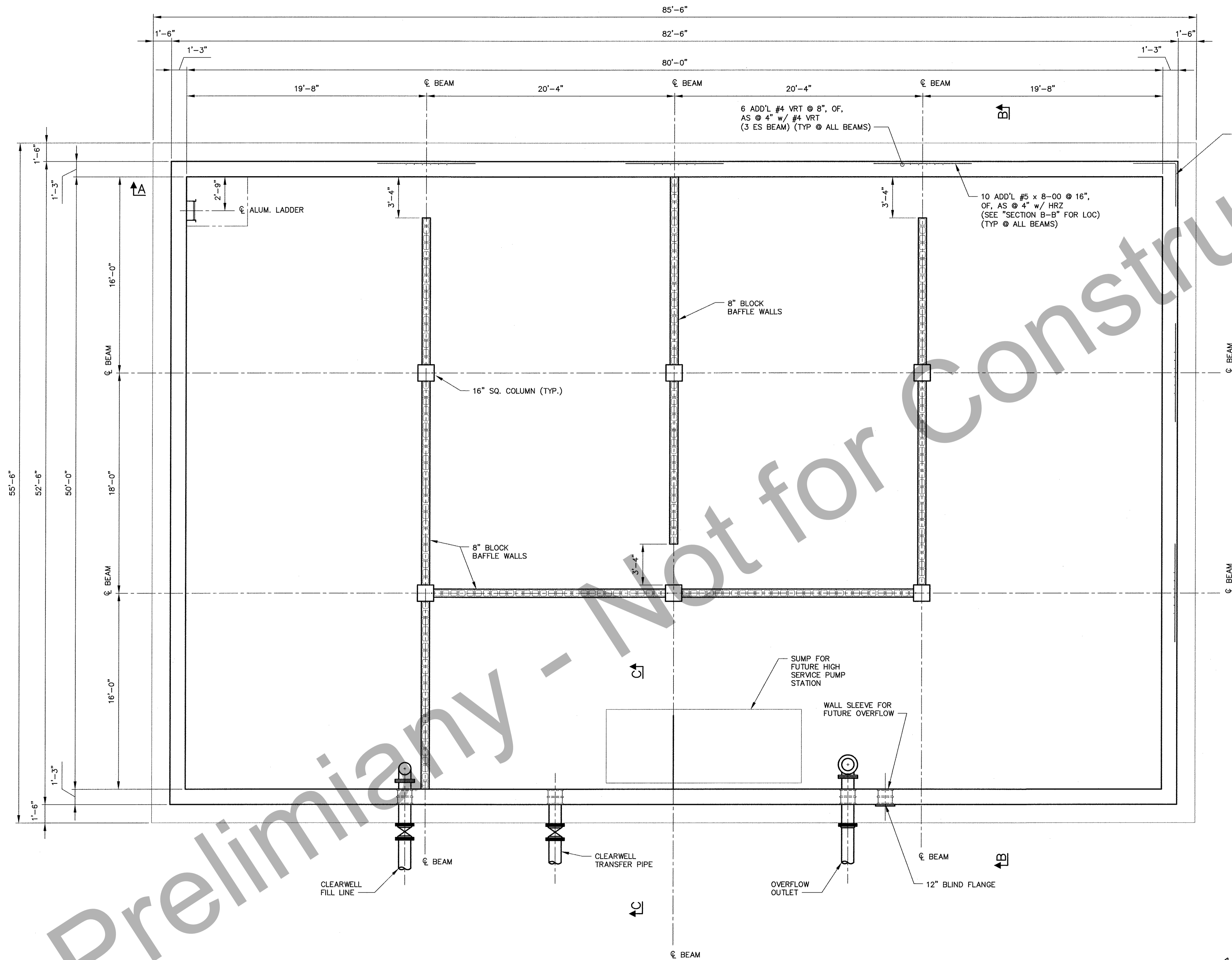


SHOWER BASE DETAIL
 SCALE: 1" = 1'-0"



REVISIONS		CITY OF CLARKESVILLE, GEORGIA WATER SYSTEM IMPROVEMENTS	
		ADDITIONS TO WATER TREATMENT PLANT	
		TREATMENT BUILDING SECOND FLOOR MODIFICATION PLANS	
DRAWN	CHECKED	SCALE: AS SHOWN	DATE: MAY 2018
GKA	WDT		
TURNIPSEED ENGINEERS		ATLANTA AUGUSTA ST. SIMONS ISLAND	SHEET 12 OF 48

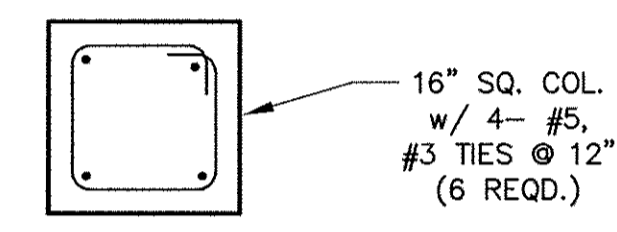
P:\Clarkesville\151985 WTP - USDA Drawings\151985 TREATMENT BUILDING RENOVATIONS.DWG



10 ADD'L #5 CB w/ 42" LEGS @ 16", OF, AS @ 4" w/ HRZ (SEE "SECTION B-B" FOR LOC) (TYP 4 CRN)

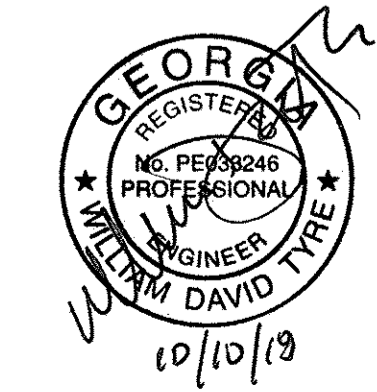
6 ADD'L #4 VRT @ 8", OF, AS @ 4" w/ #4 VRT (3 ES BEAM) (TYP @ ALL BEAMS)

10 ADD'L #5 x 8-00 @ 16", OF, AS @ 4" w/ HRZ (SEE "SECTION B-B" FOR LOC) (TYP @ ALL BEAMS)



TYP. COLUMN DETAIL
SCALE: 3/4" = 1'-0"

CLEARWELL WALL PLAN
SCALE: 1/4" = 1'-0"



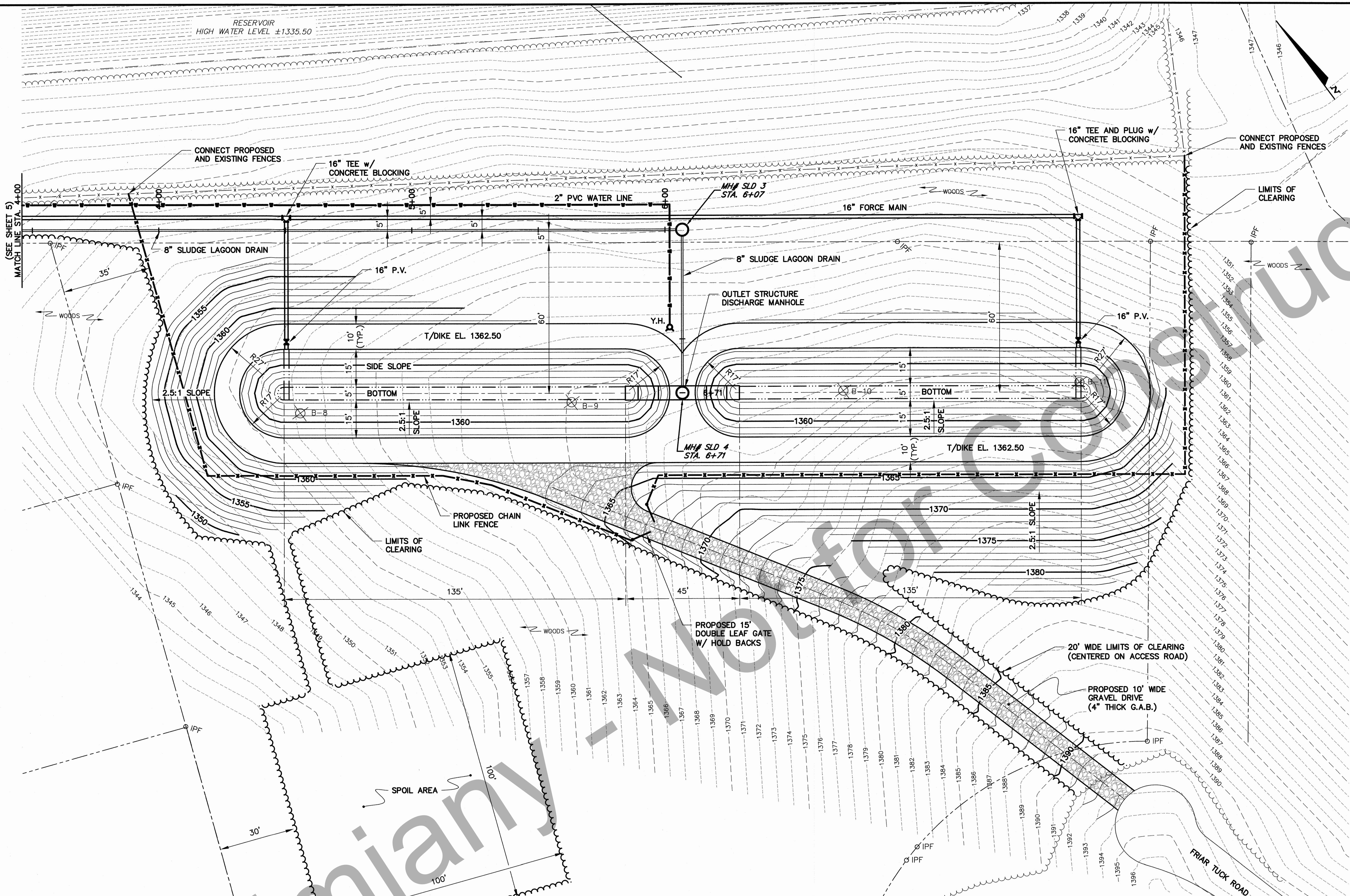
REVISIONS		CITY OF CLARKESVILLE, GEORGIA WATER SYSTEM IMPROVEMENTS ADDITIONS TO WATER TREATMENT PLANT	
		CLEARWELL WALL PLAN	
DRAWN	CHECKED	SCALE: AS SHOWN	DATE: MAY 2018
GKA	WDT		
TURNIPSEED ENGINEERS		ATLANTA AUGUSTA ST. SIMONS ISLAND	SHEET 17 OF 44

NOTE

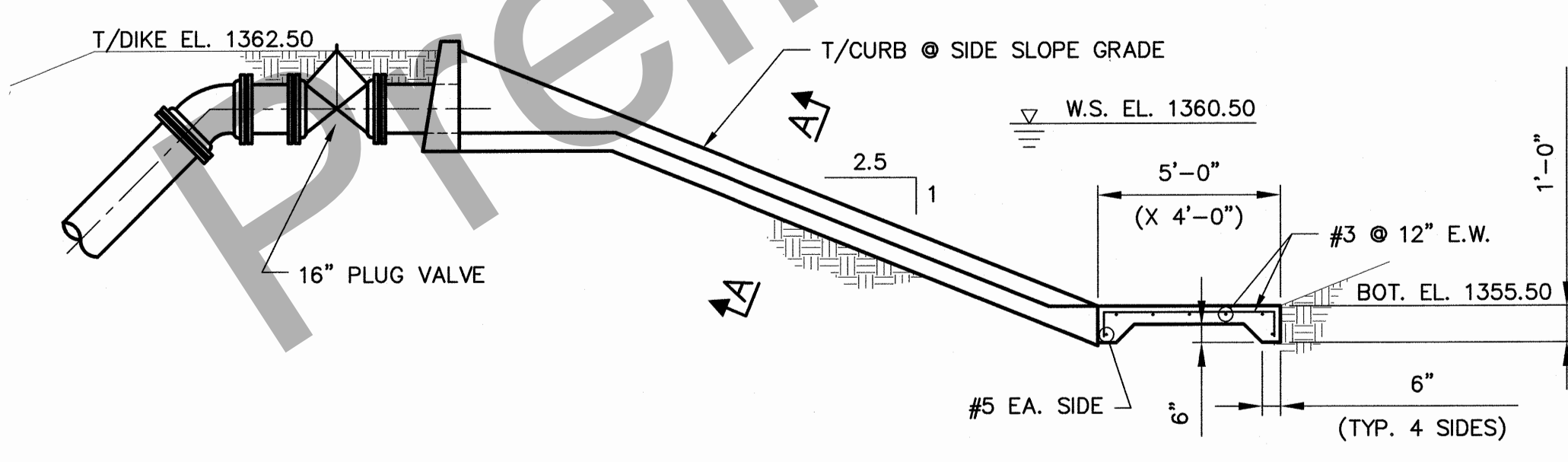
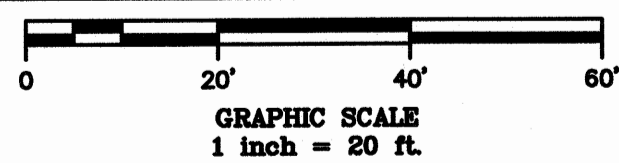
EXCESS FILL NOT USED IN OTHER AREAS OF SITE SHALL BE ADDED TO TOP OF DIKE WIDTH.

LEGEND

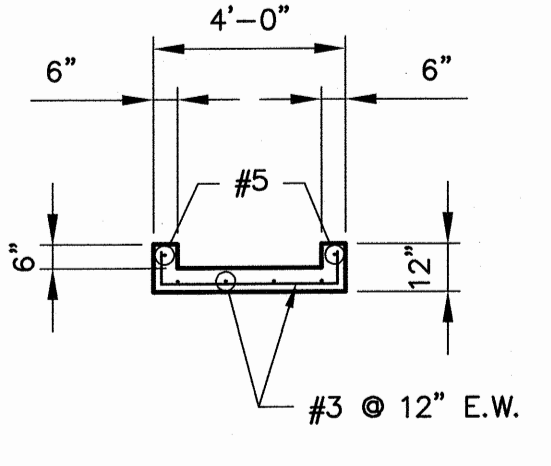
	EXISTING	PROPOSED	FUTURE
STRUCTURE			
ROADWAY			
ROADWAY OVERLAY			
GRAVEL DRIVE			
SIDEWALK			
FENCE			
PROPERTY LINE			
TREE LINE			
C.I. OR D.I. PIPE			
CONC. OR V.C. PIPE			
CHEMICAL LINE			
REUSE LINE			
WATER LINE			
YARD HYDRANT			
CLEANOUT			
SOIL BORE			



SLUDGE LAGOON SITE PLAN



TYPICAL INLET CHUTE PROFILE
SCALE: 1/4" = 1'-0"



SECTION A-A
SCALE: 1/4" = 1'-0"



REVISIONS		CITY OF CLARKESVILLE, GEORGIA WATER SYSTEM IMPROVEMENTS	
		ADDITIONS TO WATER TREATMENT PLANT	
		SLUDGE LAGOON SITE PLAN	
DRAWN	CHECKED	SCALE: AS SHOWN	DATE: MAY 2018
GKA	WDT		
TURNIPSEED ENGINEERS		ATLANTA AUGUSTA ST. SIMONS ISLAND	SHEET 21 OF 48

P:\Clarkesville\151985 WTP - USDA\Drawings\151985 WTP SITE.DWG