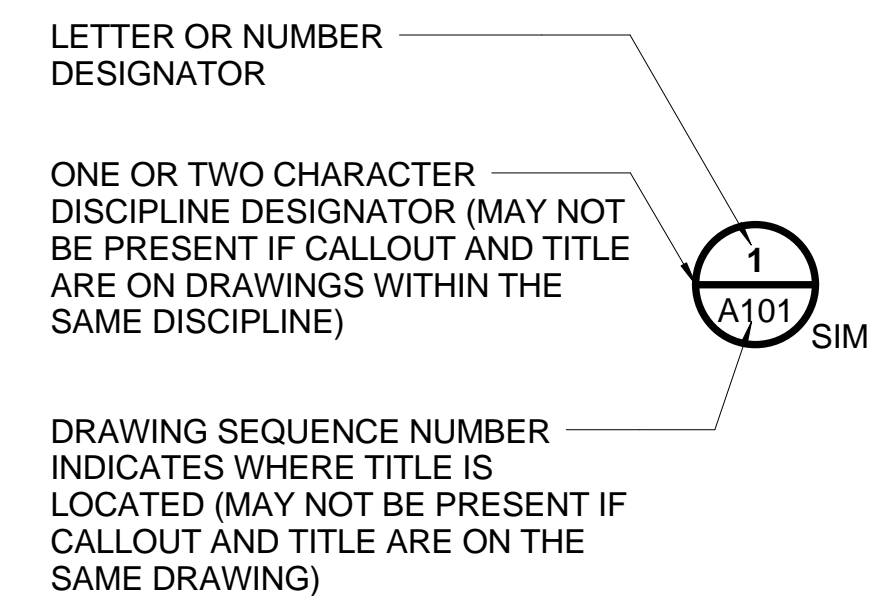
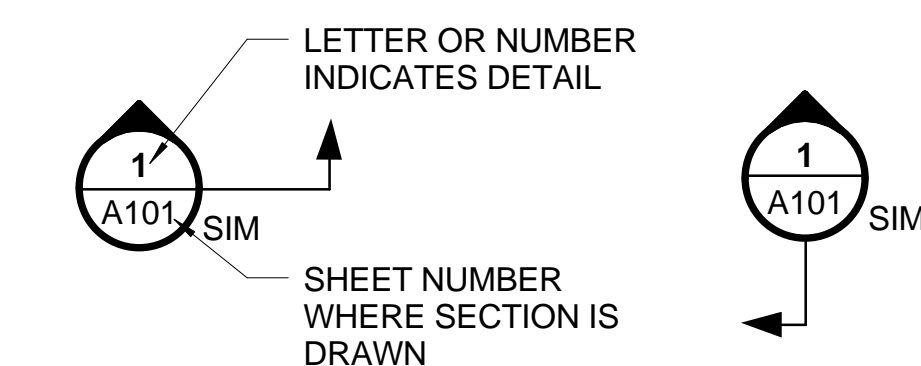


# CALLOUT IDENTIFICATION

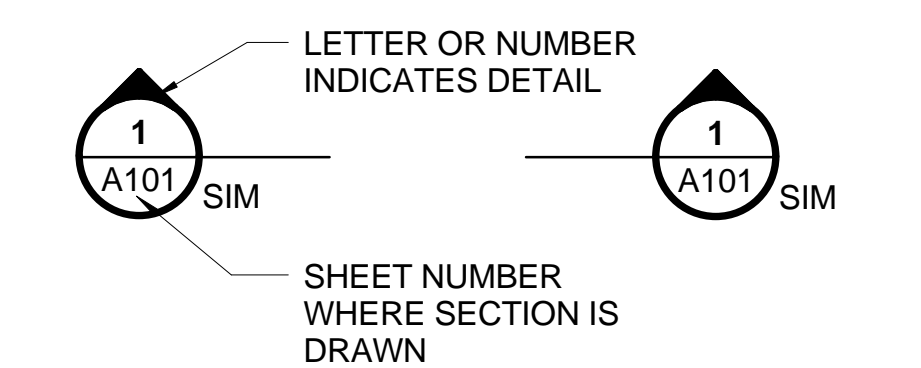
## SECTION, DETAIL, AND ELEVATION SYMBOL IDENTIFIERS:



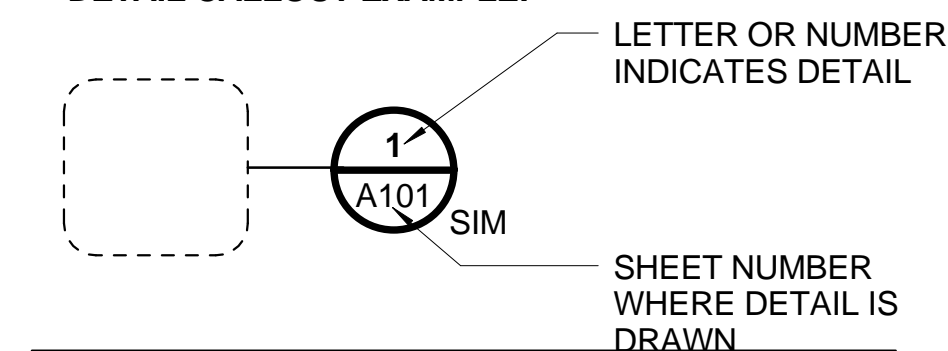
### WALL SECTION CALLOUT EXAMPLE:



### BUILDING SECTION CALLOUT EXAMPLE:



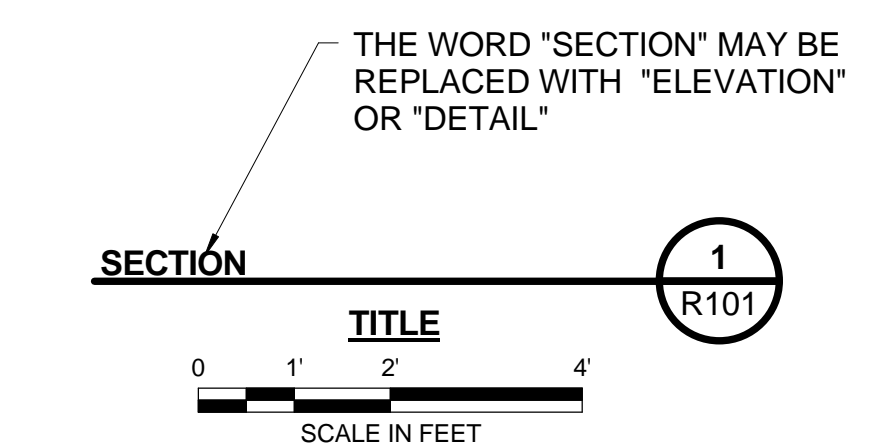
### DETAIL CALLOUT EXAMPLE:



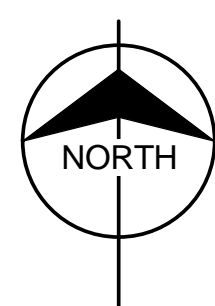
### ELEVATION CALLOUT EXAMPLE:



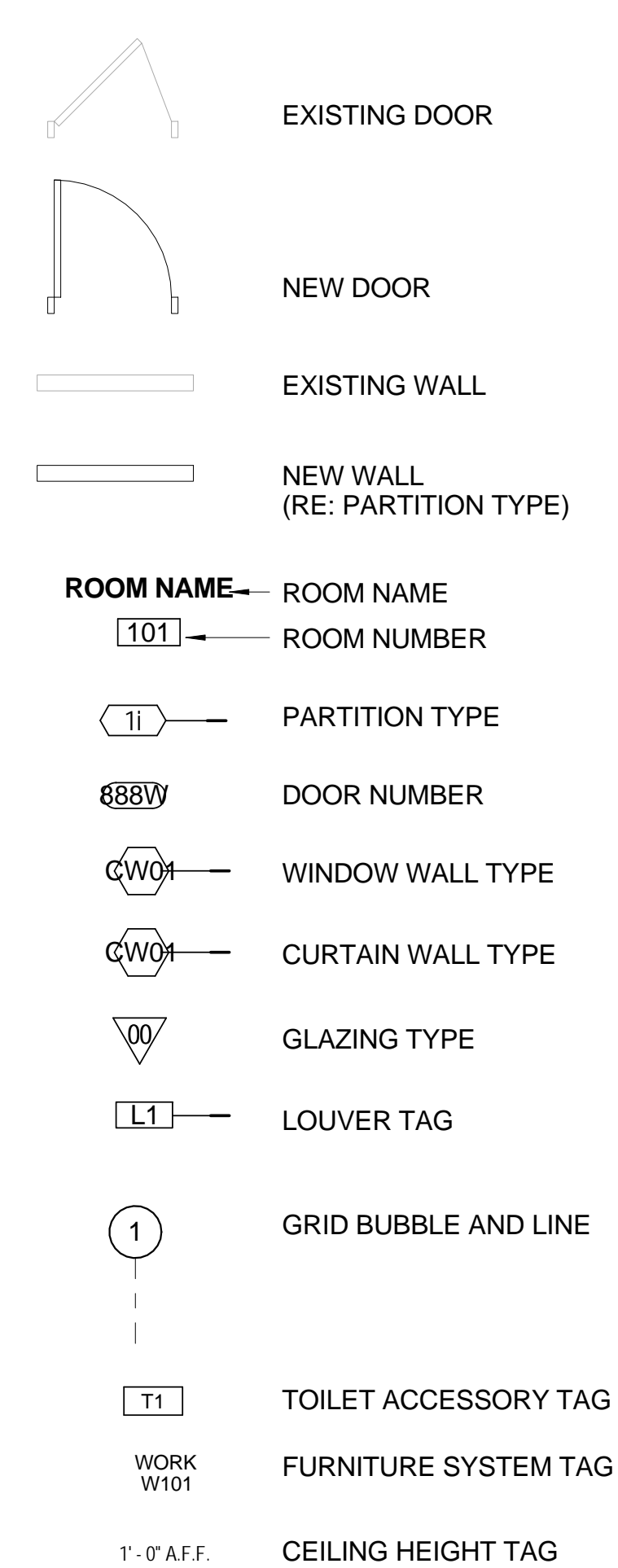
### SECTION, DETAIL, AND ELEVATION TITLE EXAMPLE:



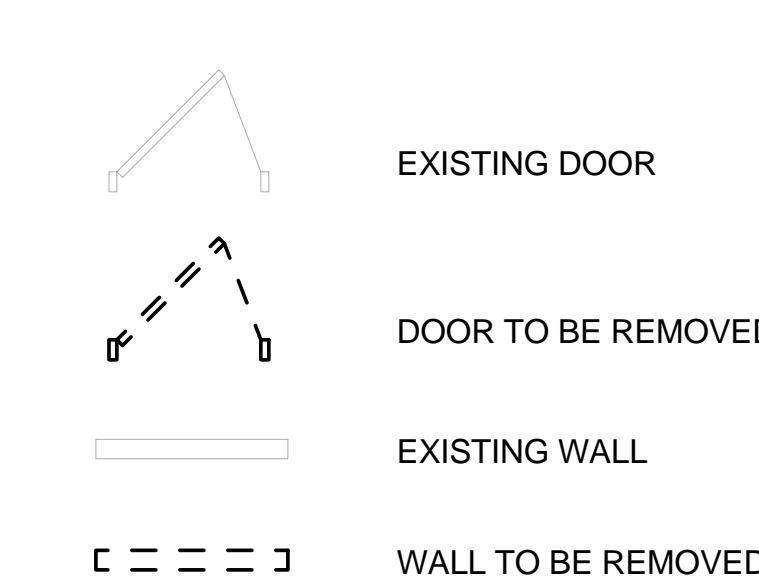
### NORTH ARROW EXAMPLE:



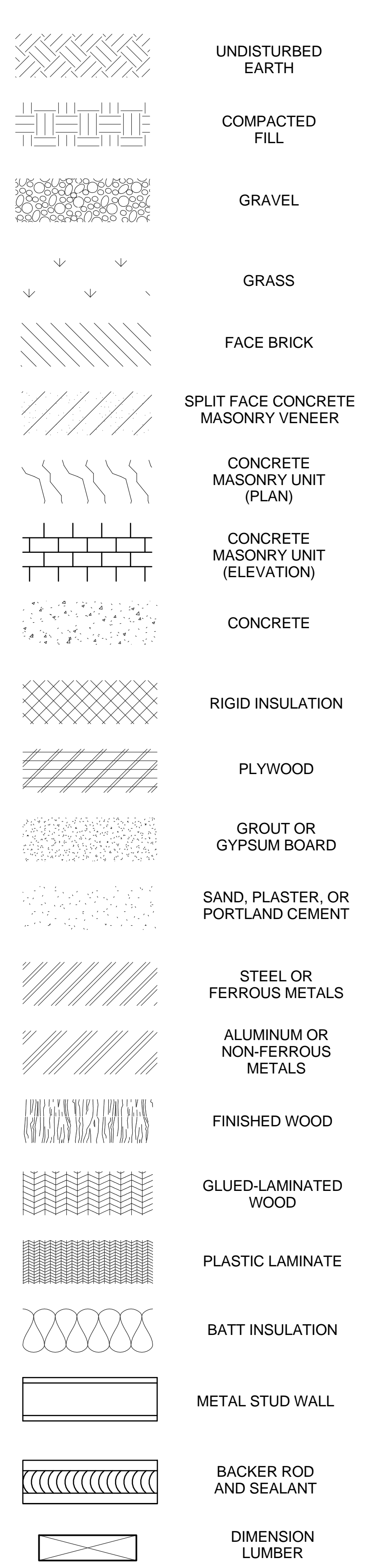
## PLAN LEGEND:



## DEMOLITION/EXISTING PLAN LEGEND



# MATERIAL SYMBOLS

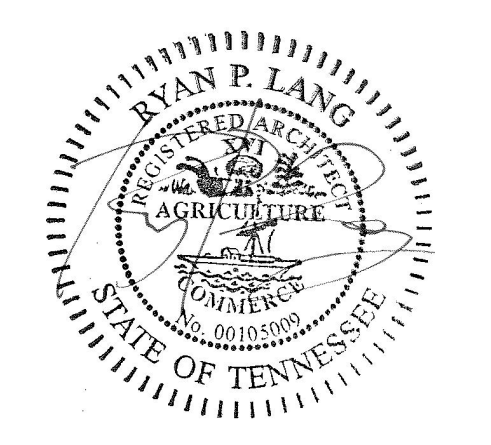


|                   |                      |        |          |            |                                    |                              |                                   |          |                              |         |                       |                                   |                         |                                |               |                      |                  |                 |                 |                        |                  |       |                      |       |            |      |                        |    |       |    |         |     |            |       |             |     |        |     |          |      |          |     |           |     |      |     |      |       |           |     |         |     |      |     |      |     |                   |      |                            |    |             |    |                 |    |                         |       |             |      |                       |      |   |    |       |       |           |     |                         |    |          |     |                       |     |         |       |          |     |           |     |          |    |             |     |            |    |                                     |     |                           |    |              |
|-------------------|----------------------|--------|----------|------------|------------------------------------|------------------------------|-----------------------------------|----------|------------------------------|---------|-----------------------|-----------------------------------|-------------------------|--------------------------------|---------------|----------------------|------------------|-----------------|-----------------|------------------------|------------------|-------|----------------------|-------|------------|------|------------------------|----|-------|----|---------|-----|------------|-------|-------------|-----|--------|-----|----------|------|----------|-----|-----------|-----|------|-----|------|-------|-----------|-----|---------|-----|------|-----|------|-----|-------------------|------|----------------------------|----|-------------|----|-----------------|----|-------------------------|-------|-------------|------|-----------------------|------|---|----|-------|-------|-----------|-----|-------------------------|----|----------|-----|-----------------------|-----|---------|-------|----------|-----|-----------|-----|----------|----|-------------|-----|------------|----|-------------------------------------|-----|---------------------------|----|--------------|
| -A-               | ARCHITECT/ENGINEER   | -B-    | BOARD    | -C-        | CABINET                            | -D-                          | DOUBLE                            | -E-      | EAST                         | -F-     | FLOOR DRAIN           |                                   |                         |                                |               |                      |                  |                 |                 |                        |                  |       |                      |       |            |      |                        |    |       |    |         |     |            |       |             |     |        |     |          |      |          |     |           |     |      |     |      |       |           |     |         |     |      |     |      |     |                   |      |                            |    |             |    |                 |    |                         |       |             |      |                       |      |   |    |       |       |           |     |                         |    |          |     |                       |     |         |       |          |     |           |     |          |    |             |     |            |    |                                     |     |                           |    |              |
| A/E               | ACOUST               | BD     | BITUM    | CAB        | CCTV                               | CL                           | CLG                               | CLR      | CMU                          | CO      | COL                   | COMM                              | CONC                    | CONSTR                         | CONT          | CONTR                | COORD            | CORR            | CU              | °C                     | DBL              | DEMO  | DESCR                | DET   | DIA        | DIAG | DIM                    | DN | DR    | DS | DWG     | E   | EA         | EEW   | EEWS        | EF  | EJ     | EL  | ELAST    | ELEC | ELEV     | EQ  | EQUIP     | ETC | EW   | EWC | EXH  | EXIST | EXP       | EXT | FD      | FDN | FE   | FEC | FF   |     |                   |      |                            |    |             |    |                 |    |                         |       |             |      |                       |      |   |    |       |       |           |     |                         |    |          |     |                       |     |         |       |          |     |           |     |          |    |             |     |            |    |                                     |     |                           |    |              |
| ADJ               | ADJACENT, ADJUSTABLE | BLDG   | BUILDING | CID        | CONTROL JOINT, CONSTRUCTION JOINT  | CLG                          | CEILING                           | CLR      | CONCRETE MASONRY UNIT (PLAN) | CO      | CLEANOUT              | COL                               | COLUMN                  | COMM                           | COMMUNICATION | CONC                 | CONCRETE         | CONSTR          | CONSTRUCTION    | CONT                   | CONTINUOUS       | CONTR | CONTRACT, CONTRACTOR | COORD | COORDINATE | CORR | CORRUGATED OR CORRIDOR | CU | CUBIC | °C | CELSIUS | DBL | DEMOLITION | DESCR | DESCRIPTION | DET | DETAIL | DIA | DIAMETER | DIAG | DIAGONAL | DIM | DIMENSION | DN  | DOWN | DR  | DOOR | DS    | DOWNSPOUT | DWG | DRAWING | E   | EAST | EA  | EACH | EEW | EMERGENCY EYEWASH | EEWS | EMERGENCY EYEWASH & SHOWER | EF | EXHAUST FAN | EJ | EXPANSION JOINT | EL | ELEVATION, AS IN HEIGHT | ELAST | ELASTOMERIC | ELEC | ELECTRIC / ELECTRICAL | ELEV | ELEVATOR, OR ELEVATION AS IN NORTH ELEV | EQ | EQUAL | EQUIP | EQUIPMENT | ETC | AND SO FORTH (ETCETERA) | EW | EACH WAY | EWC | ELECTRIC WATER COOLER | EXH | EXHAUST | EXIST | EXISTING | EXP | EXPANSION | EXT | EXTERIOR | FD | FLOOR DRAIN | FDN | FOUNDATION | FE | FIRE EXTINGUISHER WITH WALL BRACKET | FEC | FIRE EXTINGUISHER CABINET | FF | FINISH FLOOR |
| UNDISTURBED EARTH | COMPACTED FILL       | GRAVEL | GRASS    | FACE BRICK | SPLIT FACE CONCRETE MASONRY VENEER | CONCRETE MASONRY UNIT (PLAN) | CONCRETE MASONRY UNIT (ELEVATION) | CONCRETE | RIGID INSULATION             | PLYWOOD | GROUT OR GYPSUM BOARD | SAND, PLASTER, OR PORTLAND CEMENT | STEEL OR FERROUS METALS | ALUMINUM OR NON-FERROUS METALS | FINISHED WOOD | GLUED-LAMINATED WOOD | PLASTIC LAMINATE | BATT INSULATION | METAL STUD WALL | BACKER ROD AND SEALANT | DIMENSION LUMBER |       |                      |       |            |      |                        |    |       |    |         |     |            |       |             |     |        |     |          |      |          |     |           |     |      |     |      |       |           |     |         |     |      |     |      |     |                   |      |                            |    |             |    |                 |    |                         |       |             |      |                       |      |   |    |       |       |           |     |                         |    |          |     |                       |     |         |       |          |     |           |     |          |    |             |     |            |    |                                     |     |                           |    |              |

# ABBREVIATIONS

|      |   |         |                                |
|------|---|---------|--------------------------------|
| FF&E | FURNITURE, FIXTURES & EQUIPMENT                 | -P-     | PUBLIC ADDRESS                 |
| FHC  | FIRE HOSE CABINET (WITH EXTINGUISHER & BRACKET) | PERIM   | PERIMETER                      |
| FHR  | FIRE HOSE REEL (WITH EXTINGUISHER & BRACKET)    | PKG     | PACKAGE                        |
| FIN  | FINISHED, FINISH                                | PL      | PLATE                          |
| FLR  | FLOOR   | PLMB    | PLUMBING                       |
| FT   | FEET / FOOT                                     | PLYWD   | PLYWOOD                        |
| FV   | FIELD VERIFY                                    | PROJ    | PROJECT                        |
| *F   | FAHRENHEIT                                      | PSF     | POUNDS PER SQUARE FOOT         |
|      |   | PSI     | POUNDS PER SQUARE INCH         |
|      |   | PVC     | POLYVINYL CHLORIDE             |
|      |   | R       | RADIUS                         |
|      |   | R/A     | RETURN AIR                     |
|      |   | RCP     | REFLECTIVE CEILING PLAN        |
|      |   | RD      | ROOF DRAIN                     |
|      |   | RECP    | RECEPTACLE                     |
|      |   | REFER   | REFERENCE                      |
|      |   | REINF   | REINFORCED                     |
|      |   | REQ'D   | REQUIRED                       |
|      |   | REV     | REVISION                       |
|      |   | RH      | RIGHT HAND                     |
|      |   | RO      | ROUGH OPENING                  |
|      |   |         |                                |
|      |   | -S-     | SOUTH                          |
|      |   | S/A     | SUPPLY AIR                     |
|      |   | SCHED   | SCHEDULE                       |
|      |   | SECT    | SECTION                        |
|      |   | SF      | SQUARE FOOT                    |
|      |   | SID     | STRUCTURAL INTERIOR DESIGN     |
|      |   | SIM     | SIMILAR                        |
|      |   | SPEC    | SPECIFICATION                  |
|      |   | SQ      | SQUARE, AS IN "SQ FT"          |
|      |   | STC     | SOUND TRANSMISSION COEFFICIENT |
|      |   | STD     | STANDARD                       |
|      |   | STOR    | STORAGE                        |
|      |   | STRUCT  | STRUCTURAL                     |
|      |   | SUPP    | SUPPORT                        |
|      |   | SUSP    | SUSPENDED                      |
|      |   | SYS     | SYSTEM                         |
|      |   |         |                                |
|      |   | -J-     | JANITOR'S CLOSET               |
|      |   |         |                                |
|      |   | -L-     | LEFT, LONG, LENGTH             |
|      |   | LAB     | LABORATORY                     |
|      |   | LAT     | LATITUDE                       |
|      |   | LAV     | LAVATORY                       |
|      |   | LB or # | POUND                          |
|      |   | LH      | LEFT HAND                      |
|      |   | LONG    | LONGITUDE                      |
|      |   | LVR     | LOUVER                         |
|      |   |         |                                |
|      |   | -M-     | METER                          |
|      |   | M       | MACHINE                        |
|      |   | MACH    | MACHINE                        |
|      |   | MAINT   | MAINTENANCE                    |
|      |   | MAS     | MASONRY                        |
|      |   | MATL    | MATERIAL                       |
|      |   | MAX     | MAXIMUM                        |
|      |   | MECH    | MECHANICAL                     |
|      |   | MFR     | MANUFACTURER                   |
|      |   | MIN     | MINIMUM                        |
|      |   | MISC    | MISCELLANEOUS                  |
|      |   | MJ      | MOVEMENT JOINT                 |
|      |   | MM      | MILLIMETER                     |
|      |   | MO      | MASONRY OPENING                |
|      |   | MTD     | MOUNTED                        |
|      |   | MTL     | METAL                          |
|      |   |         |                                |
|      |   | -N-     | NORTH                          |
|      |   | N/A     | NOT APPLICABLE                 |
|      |   | NIC     | NOT IN CONTRACT                |
|      |   | NO      | NUMBER                         |
|      |   | NOM     | NOMINAL                        |
|      |   | NTP     | NOTICE TO PROCEED              |
|      |   | NTS     | NOT TO SCALE                   |
|      |   |         |                                |
|      |   | -O-     | ON CENTER                      |
|      |   | OC      | ON CENTER                      |
|      |   | OD      | OUTSIDE DIAMETER               |
|      |   | OFF     | OFFICE                         |
|      |   | OPNG    | OPENING                        |
|      |   | OPP     | OPPOSITE                       |

**BURNS MEDONNELL**  
 3650 MANSSELL ROAD, SUITE 300  
 ALPHARETTA, GA 30022  
 770-587-4776  
 1234567890



This document has been digitally signed.  
 05/15/17

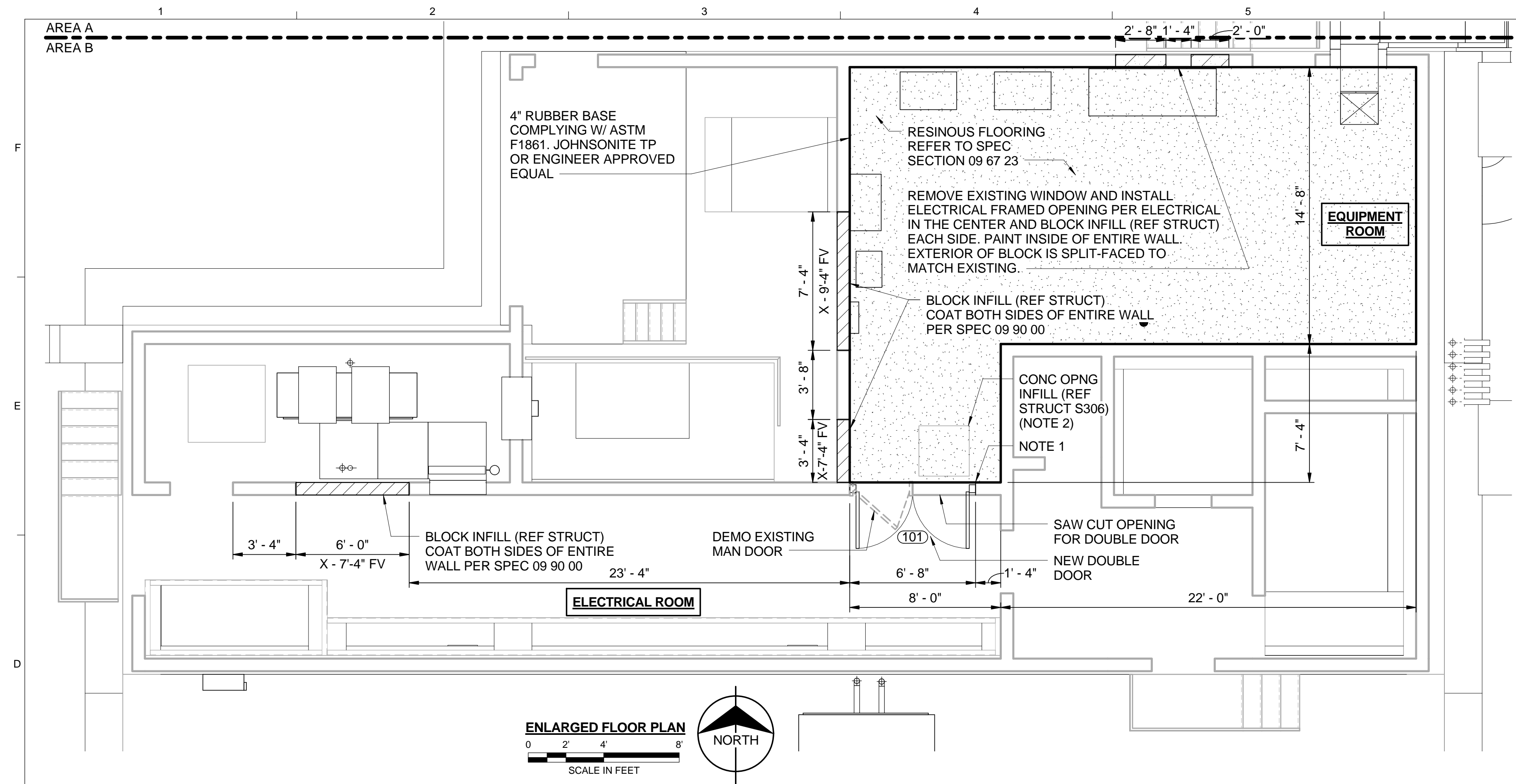
CITICO PUMP RELIABILITY IMPROVEMENTS  
 CITY OF CHATTANOOGA, TN  
 CONSENT DECREE PROGRAM



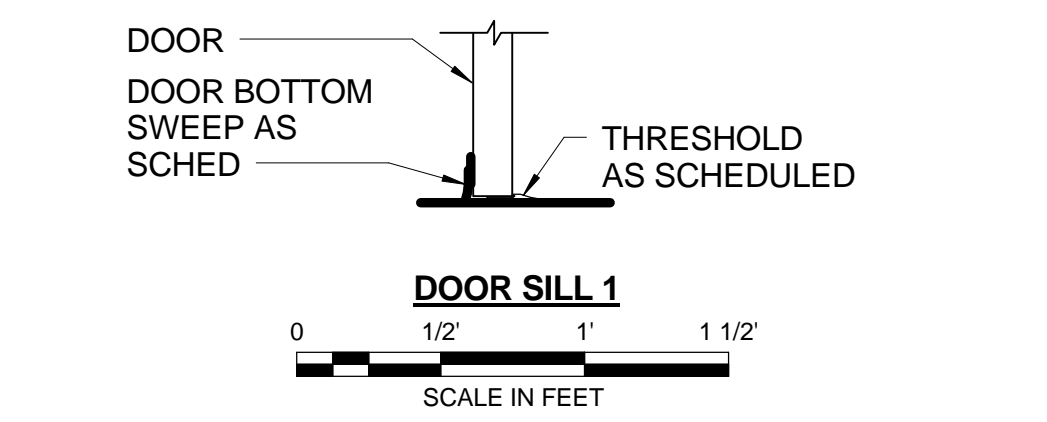
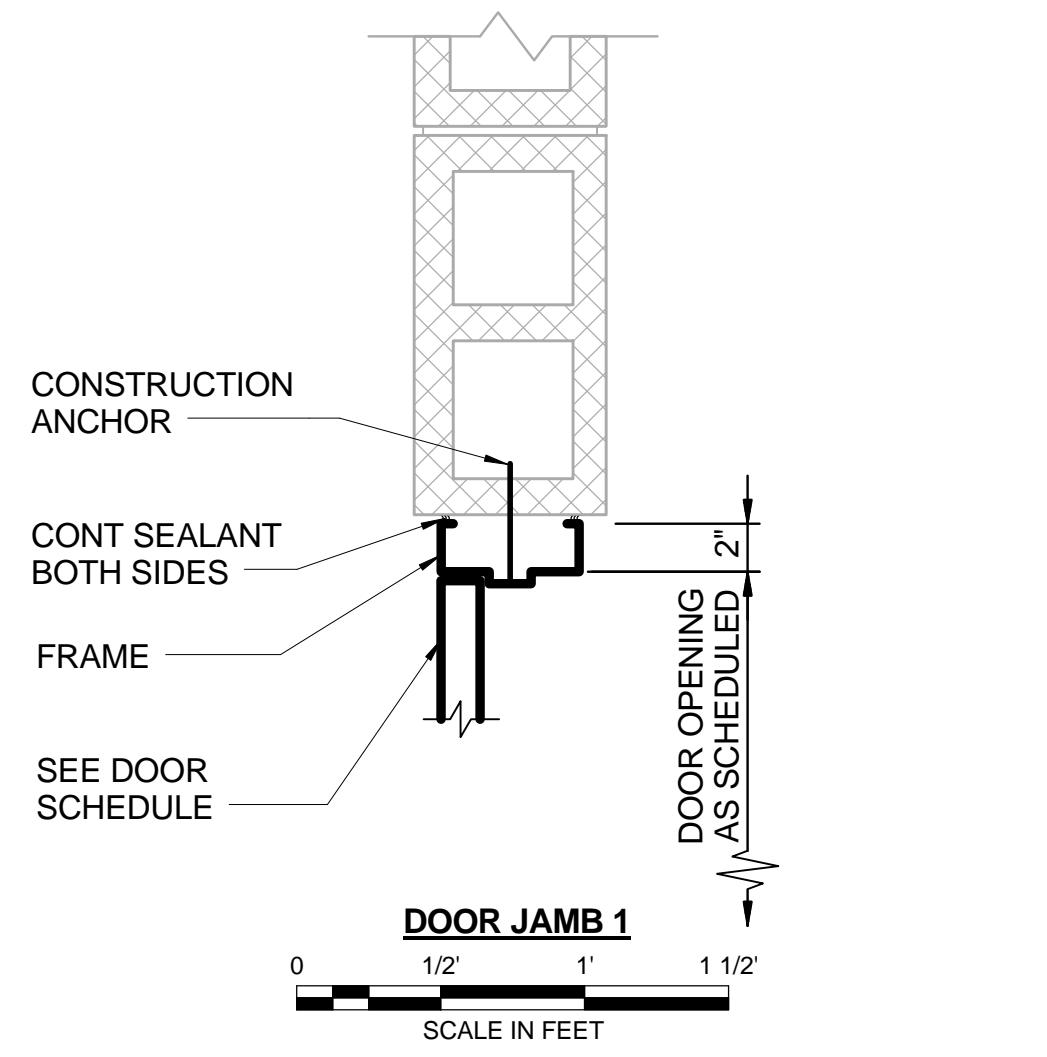
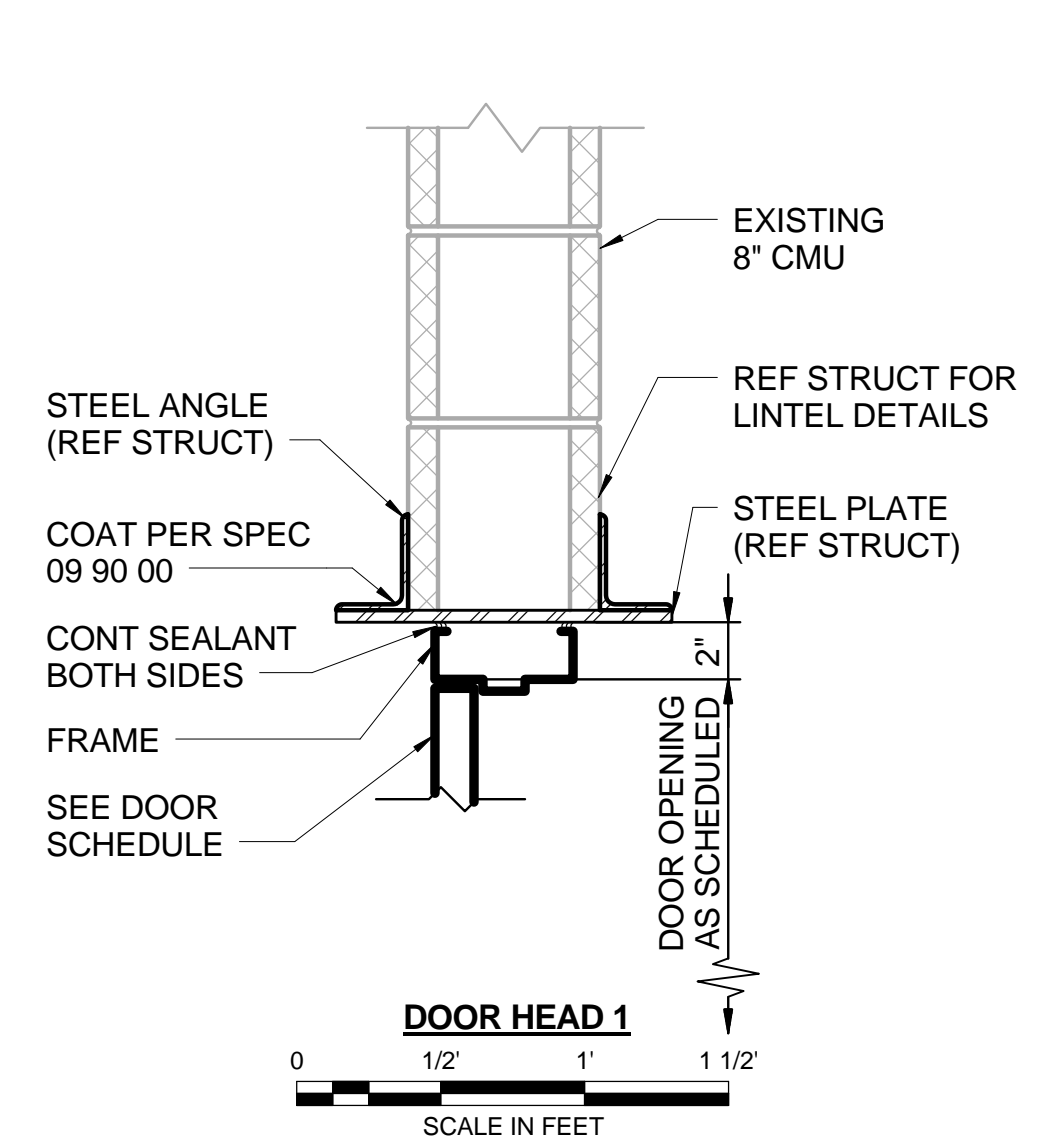
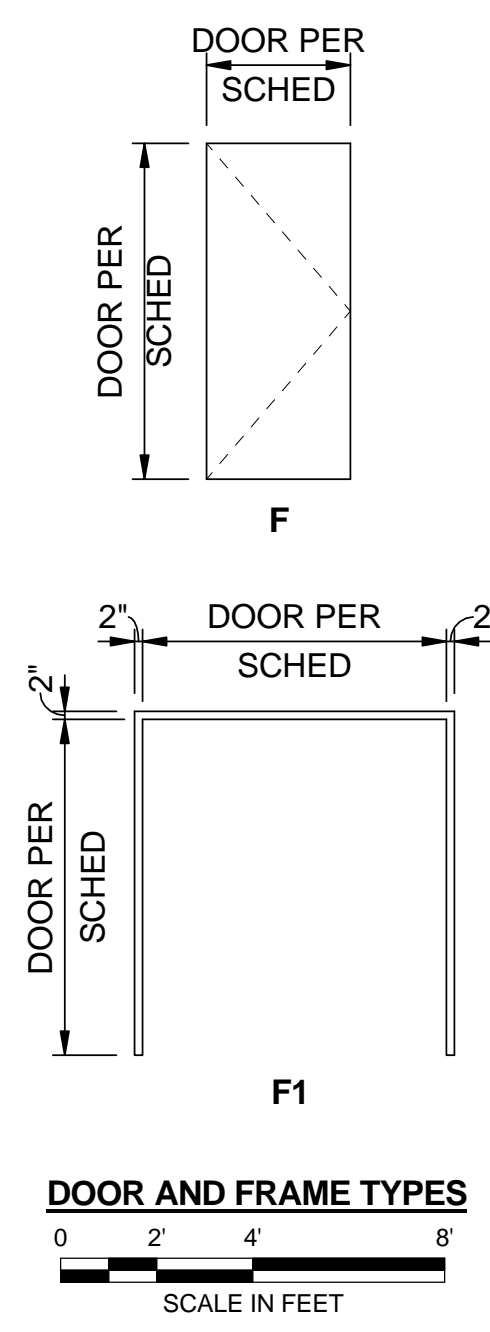
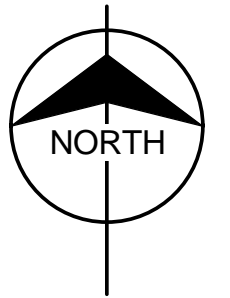
| REV | DATE    | ISSUED FOR CONSTRUCTION | REVISION DESCRIPTION |
|-----|---------|-------------------------|----------------------|
| 0   | 5/15/17 |                         |                      |

THIS LINE IS ONE INCH LONG WHEN PLOTTED FULL SCALE.  
 THIS DRAWING MUST BE USED IN CONJUNCTION WITH THE APPLICABLE OR GOVERNING TECHNICAL SPECIFICATIONS AND OTHER CONTRACT DOCUMENTS.  
 PROJECT NO: 95307  
 DATE: 04/06/17  
 DISC. LEAD: HKE DESIGNER: RPG CHECKER: HKE  
 SHEET TITLE

ARCHITECTURAL  
 LEGEND AND  
 ABBREVIATIONS

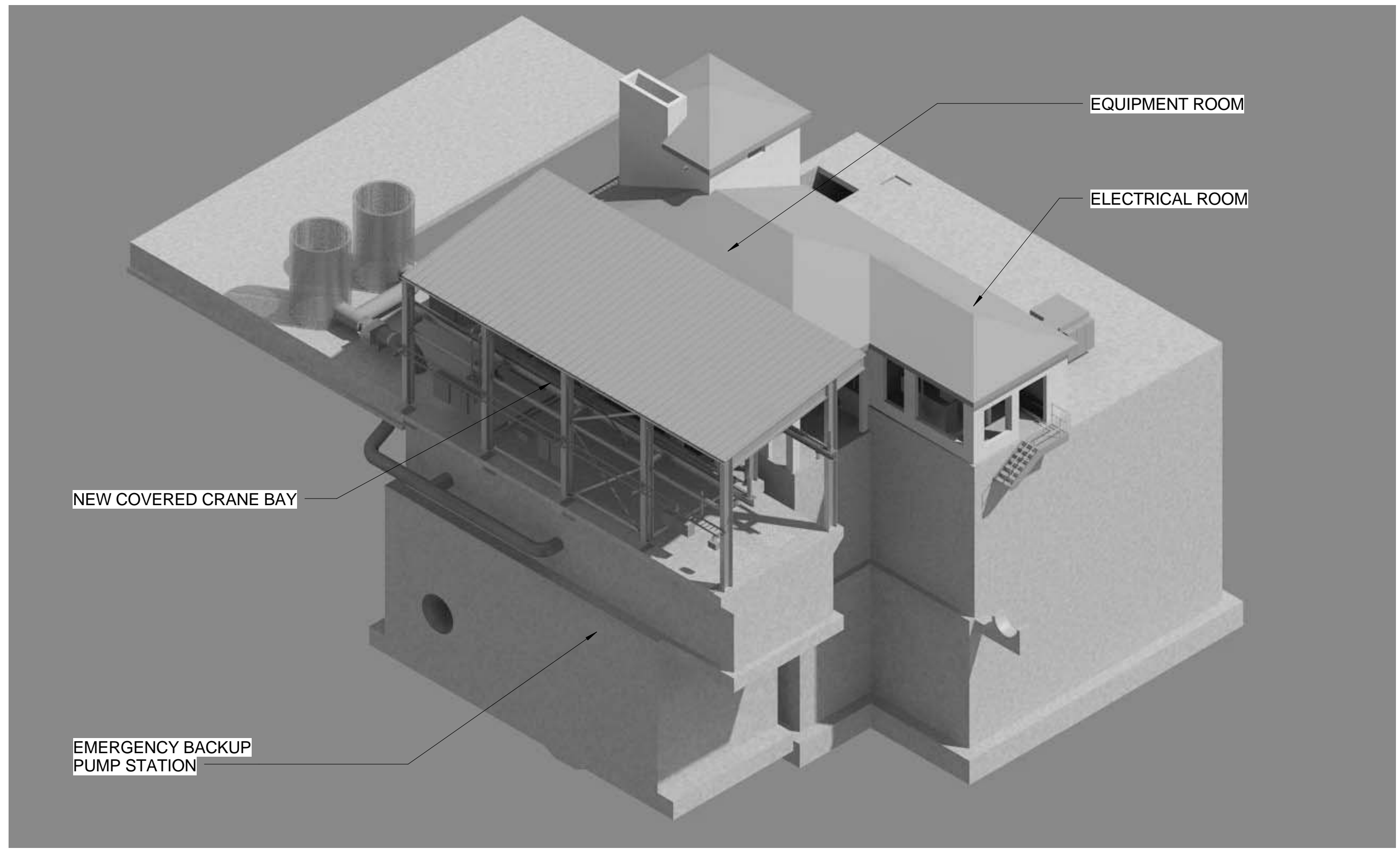


**ENLARGED FLOOR PLAN**  
SCALE IN FEET



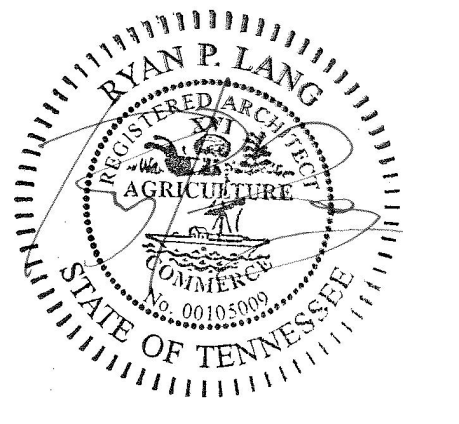
**GENERAL NOTES:**  
1. ONE COMPONENT URETHANE SEALANT COMPLYING W/ ASTM C920, TYPE S, GRADE NS CLASS 35.  
2. MUST CURE FOR 28 DAYS PRIOR TO APPLICATION OF RESINOUS FLOORING.

| DOOR NUMBER | DOOR SCHEDULE |       |          |        |      |          |        |      |      |                 |     |        |   |   |              |         |  |
|-------------|---------------|-------|----------|--------|------|----------|--------|------|------|-----------------|-----|--------|---|---|--------------|---------|--|
|             | DOOR          |       |          |        |      |          | FRAME  |      |      | ASSEMBLY RATING | STC | DETAIL |   |   | HARDWARE SET | REMARKS |  |
|             | SIZE          | TYPE  | MATERIAL | FINISH | TYPE | MATERIAL | FINISH | HEAD | JAMB |                 |     | SILL   |   |   |              |         |  |
| 101         | PR.           | 3'-0" | 7'-2"    | F      | FRP  |          |        | F1   | FRP  |                 | -   | -      | 1 | 1 | 1            | 1       |  |



**ISO MODEL**  
NOT TO SCALE

**BURNS MEDONNELL**  
3650 MANSELL ROAD, SUITE 300  
ALPHARETTA, GA 30022  
770-587-4776  
1234567890



This document has been digitally signed.  
05/15/17

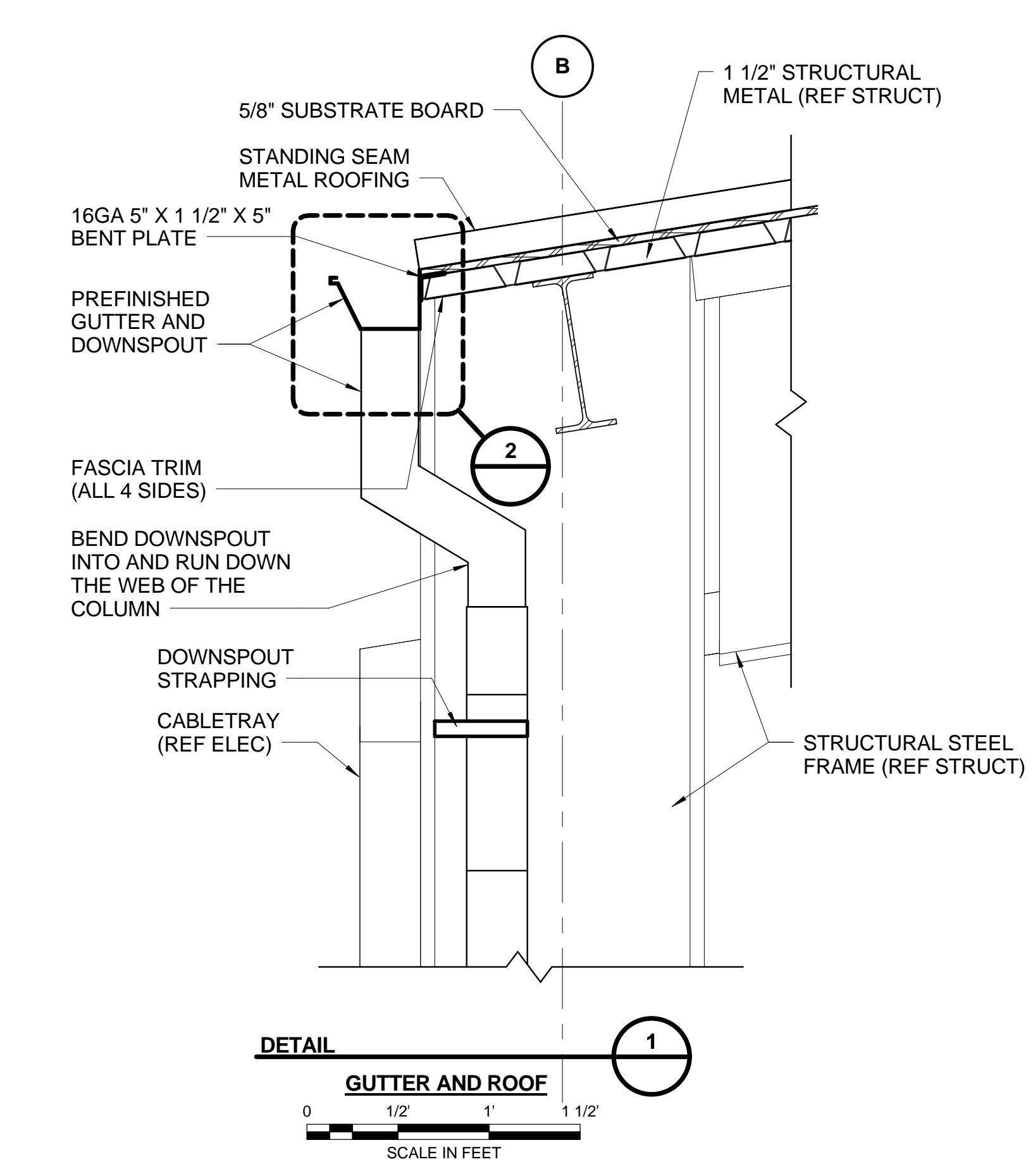
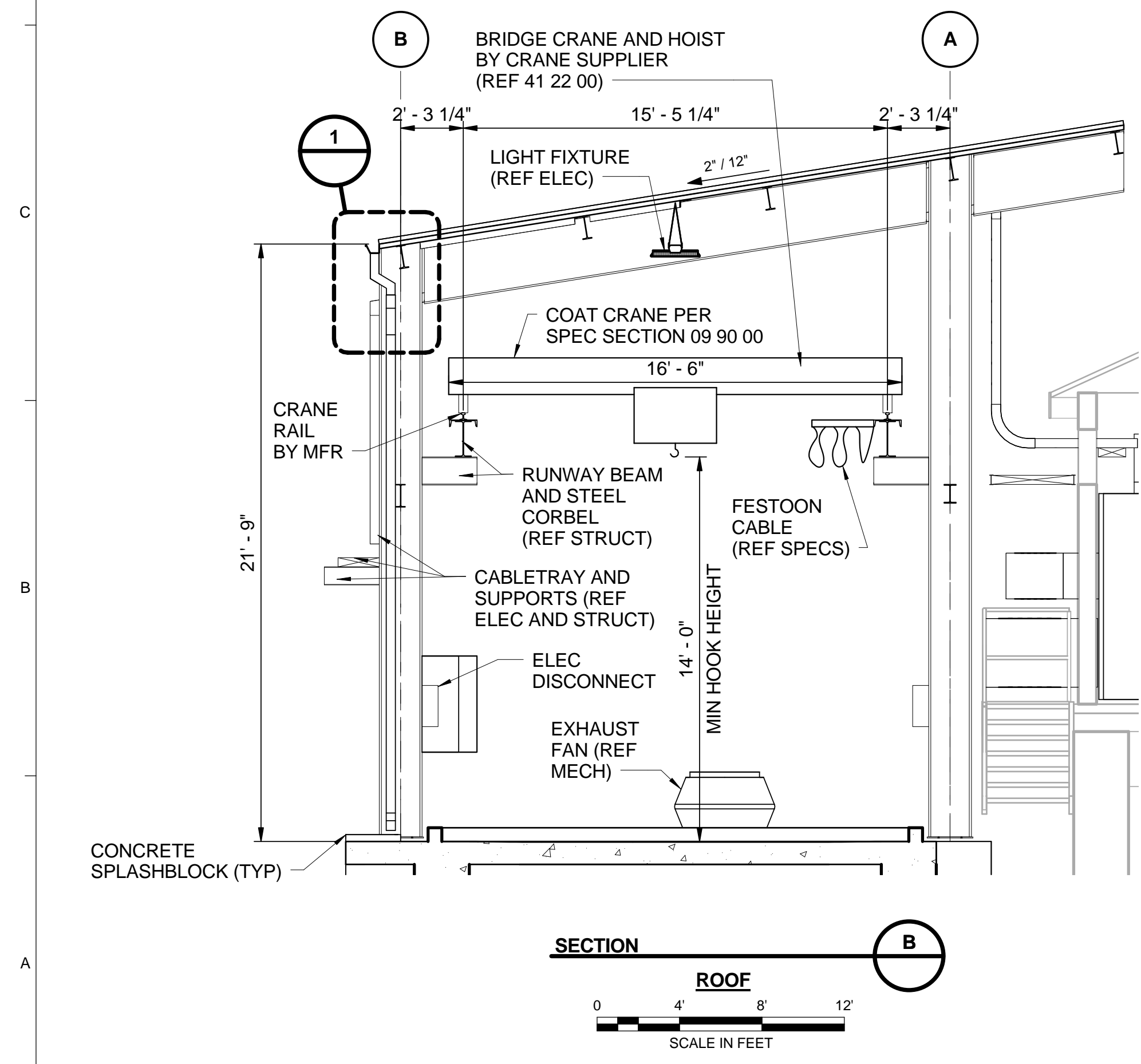
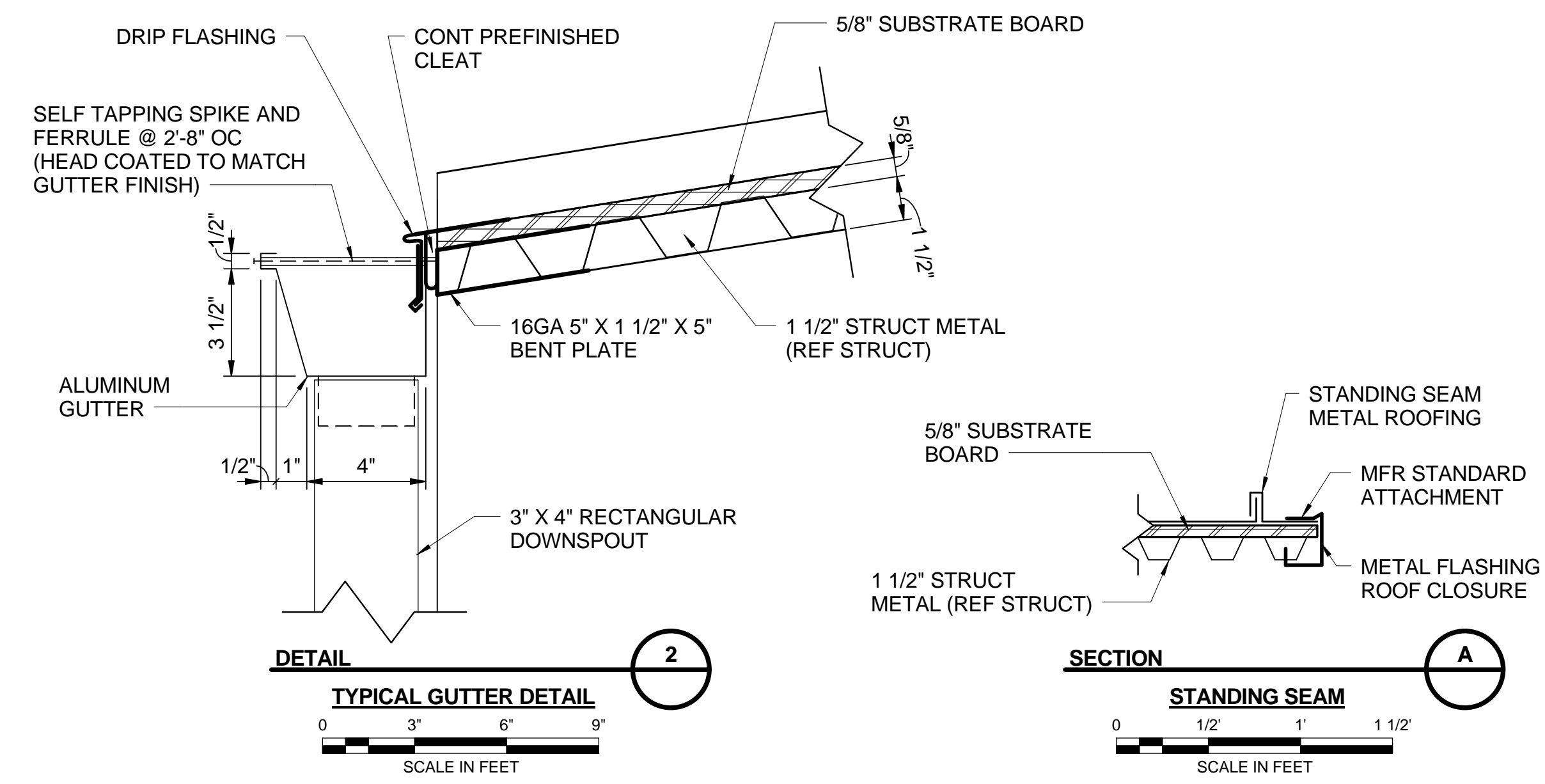
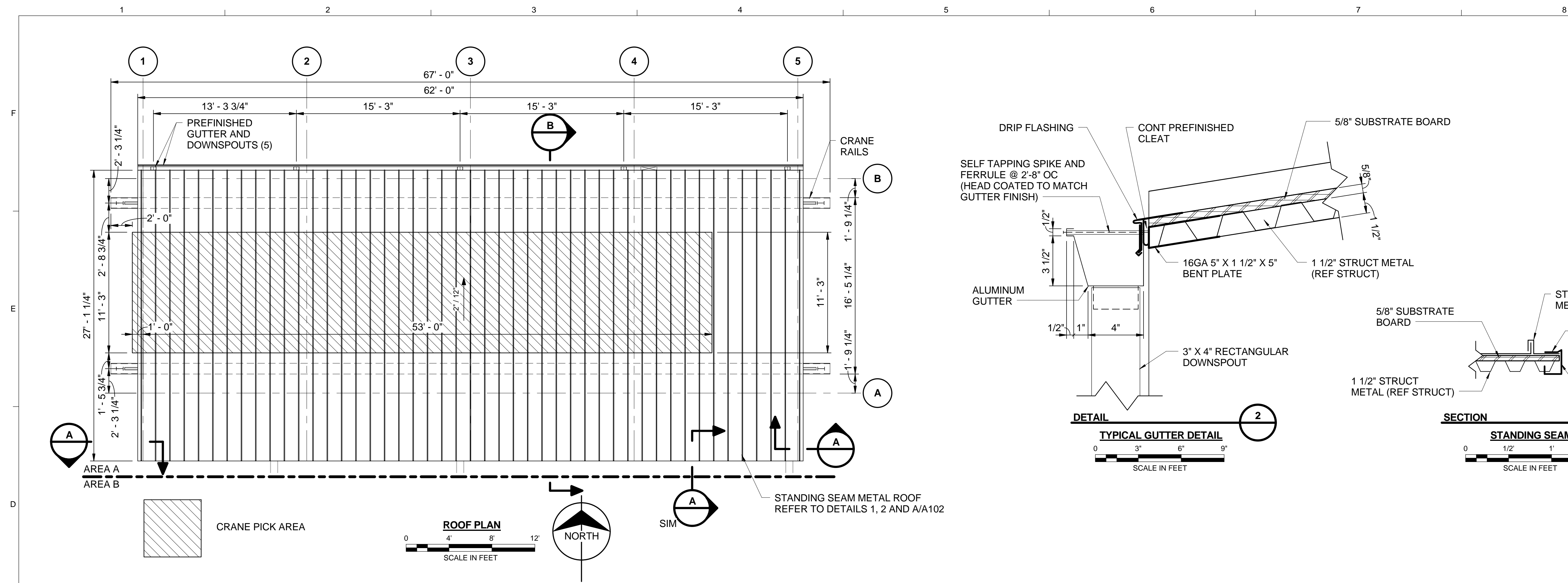
CITICO PUMP RELIABILITY IMPROVEMENTS  
CITY OF CHATTANOOGA, TN  
CONSENT DECREE PROGRAM



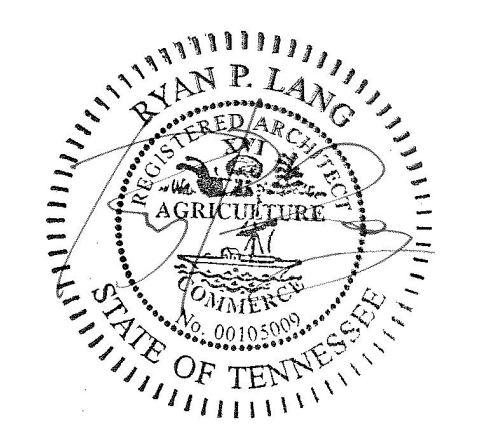
| REV | DATE    | ISSUED FOR CONSTRUCTION | REVISION DESCRIPTION |
|-----|---------|-------------------------|----------------------|
| 0   | 5/15/17 |                         |                      |

THIS LINE IS ONE INCH LONG WHEN PLOTTED FULL SCALE.  
THIS DRAWING MUST BE USED IN CONJUNCTION WITH THE APPLICABLE OR GOVERNING TECHNICAL SPECIFICATIONS AND OTHER CONTRACT DOCUMENTS.  
PROJECT NO: 95307  
DATE: 03/17/17  
DISC. LEAD: HKE DESIGNER: RPG CHECKER:  
SHEET TITLE

ENLARGED PUMP STATION FLOOR PLAN SCHEDULES AND DETAILS



**BURNS MEDONNELL**  
3650 MANSELL ROAD, SUITE 300  
ALPHARETTA, GA 30022  
770-587-4776  
1234567890



This document has been digitally signed.  
05/15/17

CITICO PUMP RELIABILITY IMPROVEMENTS  
CITY OF CHATTANOOGA, TN  
CONSENT DECREE PROGRAM



| REV | DATE    | REVISION DESCRIPTION    |
|-----|---------|-------------------------|
| 0   | 5/15/17 | ISSUED FOR CONSTRUCTION |

THIS LINE IS ONE INCH LONG WHEN PLOTTED FULL SCALE.  
THIS DRAWING MUST BE USED IN CONJUNCTION WITH THE APPLICABLE OR GOVERNING TECHNICAL SPECIFICATIONS AND OTHER CONTRACT DOCUMENTS.  
PROJECT NO: 95307  
DATE: 03/17/17  
DISC. LEAD: HKE DESIGNER: RPG CHECKER:  
SHEET TITLE

ROOF PLAN,  
ELEVATIONS AND  
SECTIONS