

**SOLIDS HANDLING FACILITY OVERALL HVAC PLAN**  
 SCALE: 1/8"=1'-0"



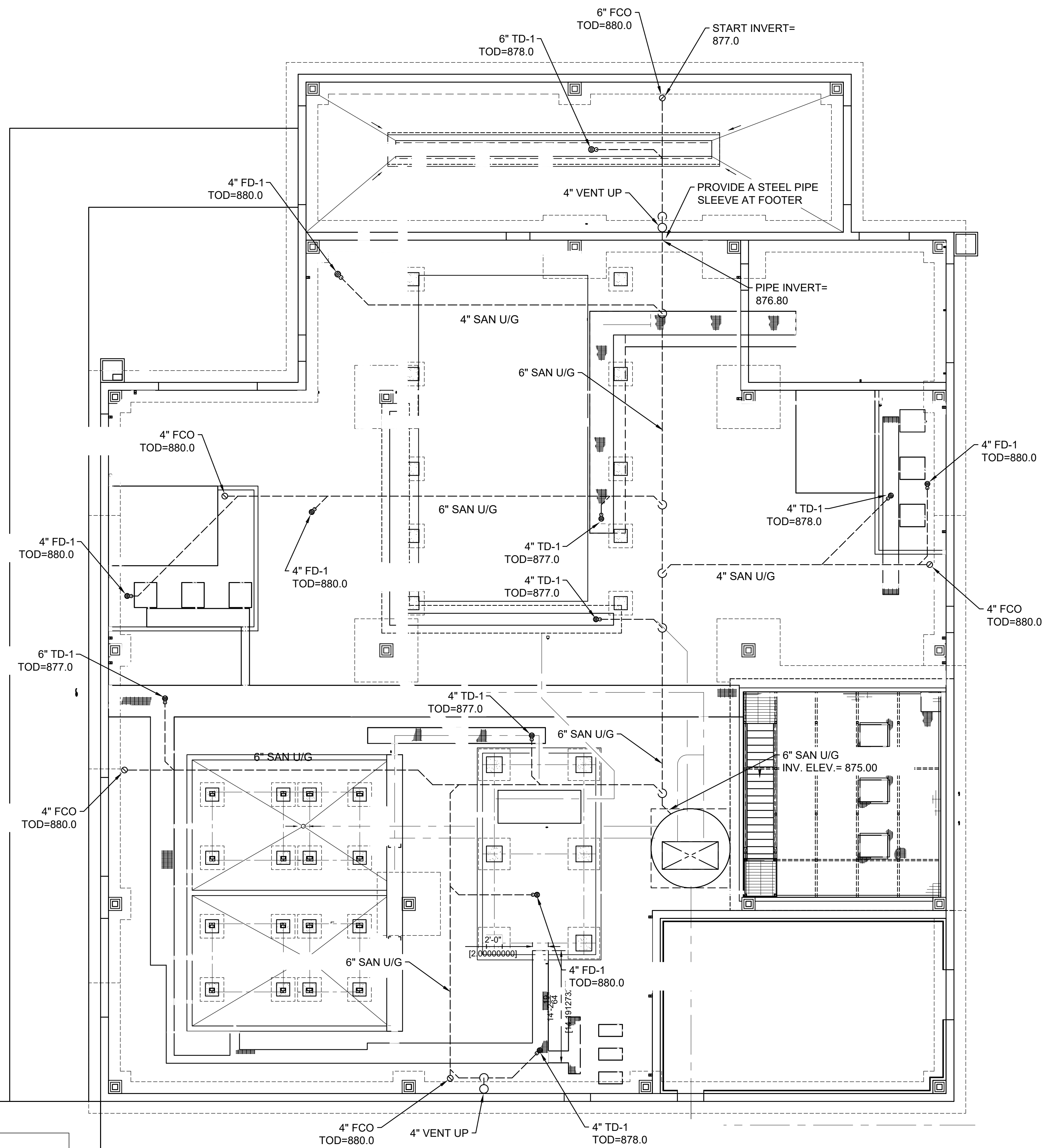
**ATKINS**  
 1600 Riverchase Parkway, Suite 700  
 Atlanta, GA 30328  
 P: 770-933-0280

**HARTWELL ENGINEERING, INC.**  
 ENGINEERS • INTEGRATORS  
 315 SANDHILL WAREHOUSE  
 (404) 249-3111

PROJ. NO.	DESIGNED BY	DRAWN BY	CHECKED BY	APPROVED BY	SCALE	CERTIFICATE OF AUTHORIZATION #	EXPIRATION DATE	REVISION	DATE
100061831	DLH	REP	---	SEPTMBER 2020	AS SHOWN	PEF00002	09/30/2022	ADDENDUM No. 3	10/30/2020

CITY OF CANTON, GEORGIA  
 WATER POLLUTION CONTROL PLANT EXPANSION TO 6 MGD  
**SOLIDS HANDLING FACILITY  
 OVERALL HVAC PLAN**

SHEET NO.  
**15-H-2**



**SOLID HANDLING FACILITY OVERALL PLUMBING PLAN**  
SCALE: 1/8"=1'-0"

**PLUMBING LEGEND**

---	W	WASTE PIPING BELOW GRADE	ABV	ABOVE
---	W	WASTE PIPING ABOVE GRADE	AFF	ABOVE FINISHED FLOOR
---	V	VENT PIPING	BEL	BELOW
---		PIPING TURNING DOWN	BFF	BELOW FINISHED FLOOR
---		TEE - DOWN, BRANCH OUT OF BOTTOM	BFG	BELOW FINISHED GRADE
---		PIPING TURNING UP	DN	DOWN
---	FD	FLOOR DRAIN AND TRAP (TYPE AS NOTED)	FCO	FLOOR CLEANOUT
			FD	FLOOR DRAIN
			FT	FEET
			IE	INVERT ELEVATION
			MIN.	MINIMUM
			SAN	SANITARY
			V	VENT
			VTR	VENT THRU ROOF

**PLUMBING FIXTURE SCHEDULE**

- FD-1 FLOOR DRAIN (REGULAR)**  
GALVANIZED COATED CAST IRON BODY, MEMBRANE CLAMP AND ADJUSTABLE TYPE "B" NICKEL BRONZE STRAINER, 6" ROUND TOP, TAPPED FOR TRAP PRIMER CONNECTION.  
ZURN - ZN-415-B-P-G
- TD-1 TRENCH DRAIN**  
CAST IRON BODY, SEEPAGE PAN, MEMBRANE CLAMP AND FRAME FOR 9" ROUND HEAVY DUTY NICKEL BRONZE SLOTTED GRATE WITH SEDIMENT BUCKET  
DRAIN - ZURN - ZN-508-Y

**GENERAL NOTES**

1. THE PLUMBING INSTALLATION SHALL COMPLY WITH THE GEORGIA PLUMBING CODE, 2018 EDITION.
2. REFERENCE THE SPECIFICATIONS FOR MATERIAL AND EQUIPMENT INSTALLATION STANDARDS.
3. PIPE ROUTING SHOWN IS SCHEMATIC AND IS NOT INTENDED TO INDICATE EXACT ROUTING. CONTRACTOR SHALL PROVIDE ADDITIONAL OFFSETS AND FITTINGS REQUIRED FOR PROPER INSTALLATION AND TO MAINTAIN CLEARANCES. VERIFY STRUCTURAL, MECHANICAL AND ELECTRICAL INSTALLATIONS AND OTHER POTENTIAL OBSTRUCTIONS AND ROUTE PIPING TO AVOID INTERFERENCES. NOTIFY THE CONTRACTING OFFICER'S REPRESENTATIVE OF ANY CONFLICTS PRIOR TO START OF WORK.
4. PROVIDE OFFSETS AND FITTINGS AND MAKE CONNECTION TO EXISTING PIPING.
5. CONCEAL PIPING ABOVE CEILINGS, WITHIN WALLS OR CHASES EXCEPT IN MECHANICAL ROOMS, CRAWL SPACE OR AS SPECIFICALLY NOTED.
6. SLEEVE AND/OR FIRESTOP PENETRATIONS THROUGH RATED WALLS, CEILINGS, AND FLOORS WITH U/L LISTED ASSEMBLIES. FIRESTOP ASSEMBLIES SHALL BE EQUAL TO, OR EXCEED THE RATING OF THE WALL, CEILING OR FLOOR. SEE ARCHITECTURAL DRAWINGS FOR FINAL FINISHES.
7. PROVIDE SANITARY WASTE, VENT, DOMESTIC WATER, ETC. ROUGH-IN AND MAKE FINAL CONNECTIONS (TO INCLUDE PROVIDING ALL NECESSARY RELATED STOPS, VALVES, TRAPS, ETC. AND MAKE READY FOR USE) TO EQUIPMENT, WHETHER FURNISHED BY THIS CONTRACTOR OR FURNISHED BY OTHERS.
8. SEE ARCHITECTURAL DRAWINGS FOR FIXTURE LOCATIONS AND MOUNTING HEIGHTS.
9. PROVIDE CLEANOUTS IN ACCORDANCE WITH THE GEORGIA PLUMBING CODE, 2018 EDITION. INSTALL CLEANOUT WITH COVER FLUSH TO FINISH SURFACE.



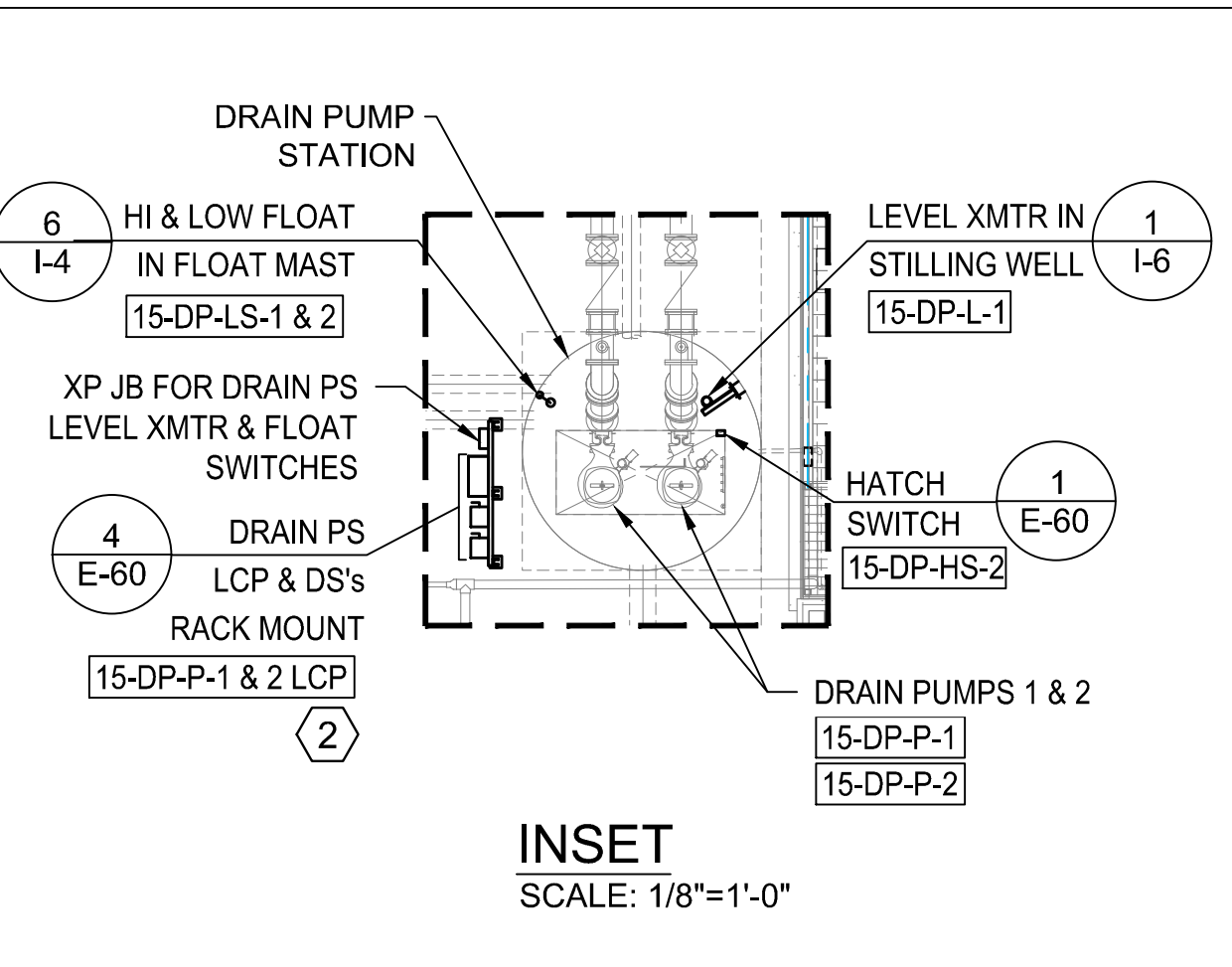
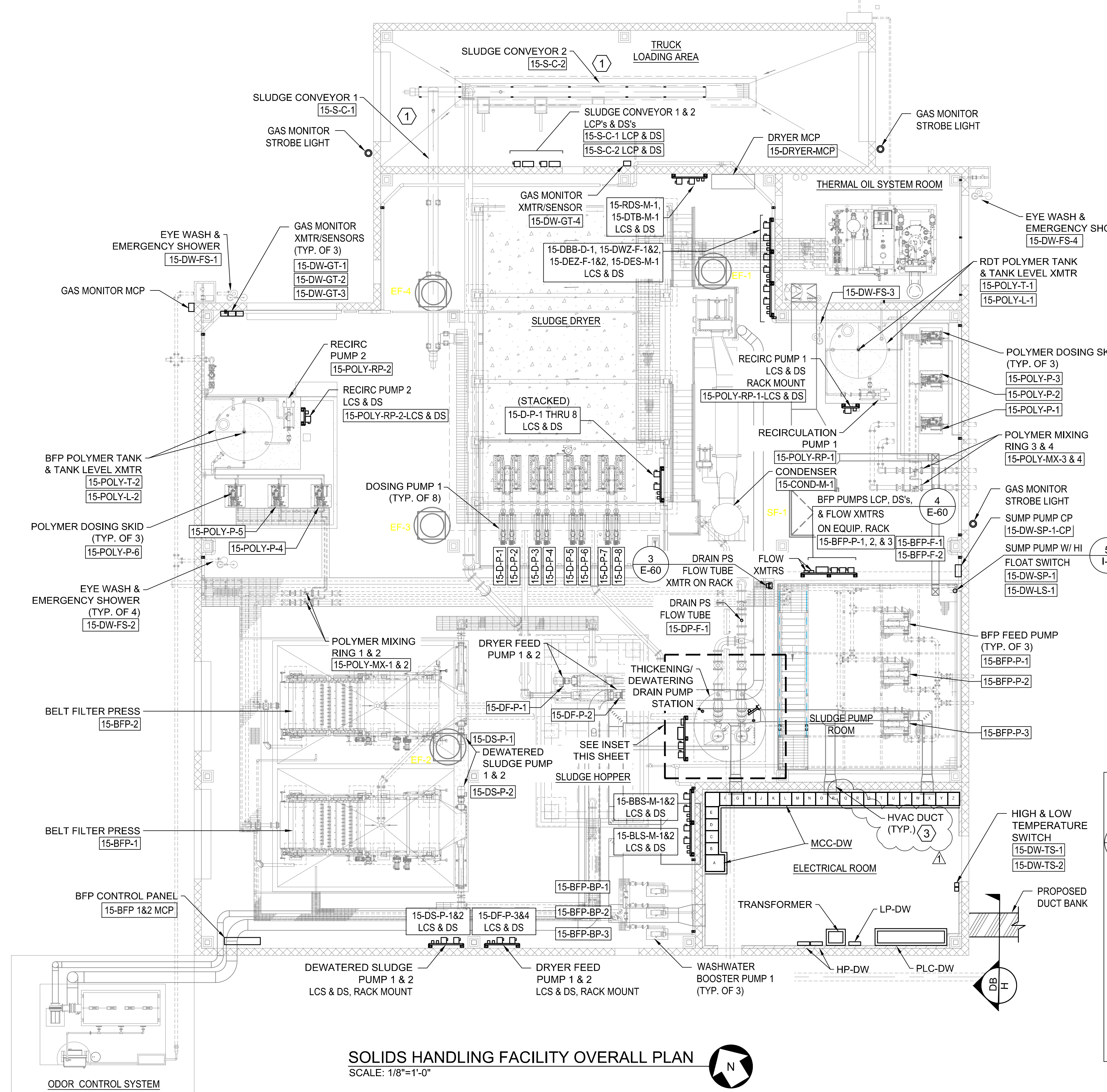
**ATKINS**  
1600 RiverEdge Parkway, N.W., Suite 700  
Atlanta, GA 30328  
P: 770-933-0280

**HARTWELL ENGINEERING, INC.**  
ENGINEERS & SURVEYORS  
STEVENSVILLE, MARYLAND  
(410) 281-1111

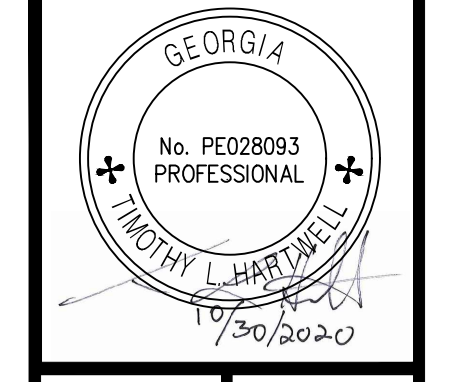
PROJ. NO.:	100061831
DESIGNED BY:	JRM
DRAWN BY:	DGT
CHECKED BY:	DLH
APPROVED BY:	
DATE:	SEPTEMBER 2020
SCALE:	AS SHOWN
CERTIFICATE OF AUTHORIZATION #	PERFORMANCE EXPIRATION DATE: 06/30/2022
REVISION	ADDENDUM No.3
DATE	10/30/20

CITY OF CANTON, GEORGIA  
WATER POLLUTION CONTROL PLANT EXPANSION TO 6 MGD  
SOLID HANDLING FACILITY  
OVERALL PLUMBING PLAN

SHEET NO.  
**15-P-1**



- NOTES:**
- ALL PANELS ARE WALL MOUNTED UNLESS OTHERWISE NOTED.
  - REFER TO DRAWING 15-E-2 FOR LIGHTING AND POWER.
  - REFER TO MECHANICAL DRAWINGS AND SPECIFICATION 15250 - PIPING INSULATION FOR LOCATION AND QUANTITY OF HEAT TRACING REQUIRED.
  - COORDINATE WITH DRYER MANUFACTURER FOR ELECTRICAL REQUIREMENTS. PROVIDE ALL CONDUIT, WIRE AND EQUIPMENT FOR A COMPLETE SYSTEM.
  - AC UNIT IN ELECTRICAL ROOM AND HEATING AND VENTILATION IN PROCESS AREA NOT SHOWN. REFER TO HVAC DRAWINGS. PROVIDE AND INSTALL ALL EQUIPMENT PER HVAC DRAWINGS AND SPECIFICATIONS. PROVIDE AND INSTALL ALL CONDUIT, WIRE, FUSED DISCONNECTS, OVERCURRENT PROTECTION, THERMOSTATS, AND OTHER EQUIPMENT FOR A COMPLETE SYSTEM.
  - PROVIDE GROUND LOOP PER DETAIL 4, DRAWING E-59.
  - ELECTRICAL ROOM IS INSULATED. COORDINATE MCC INSTALLATION WITH ROOM DIMENSIONS AVAILABLE. REMOVE INSULATION AROUND MCC, OR RECONFIGURE MCC, IF REQUIRED.
- KEY NOTES**
- ZERO SPEED AND EMERGENCY PULL CORD TO BE PROVIDED WITH CONVEYOR, COORDINATE WITH SUPPLIER.
  - WETWELL IS A CLASS 1, DIV. 1 AREA.
  - REFER TO HVAC DRAWINGS FOR DETAILS.



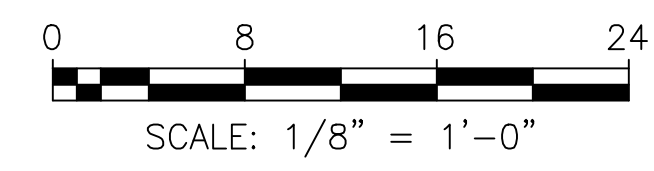
**ATKINS**  
 1600 RiverEdge Parkway, NW, Suite 700  
 Atlanta, GA 30328  
 P: 770-993-0280

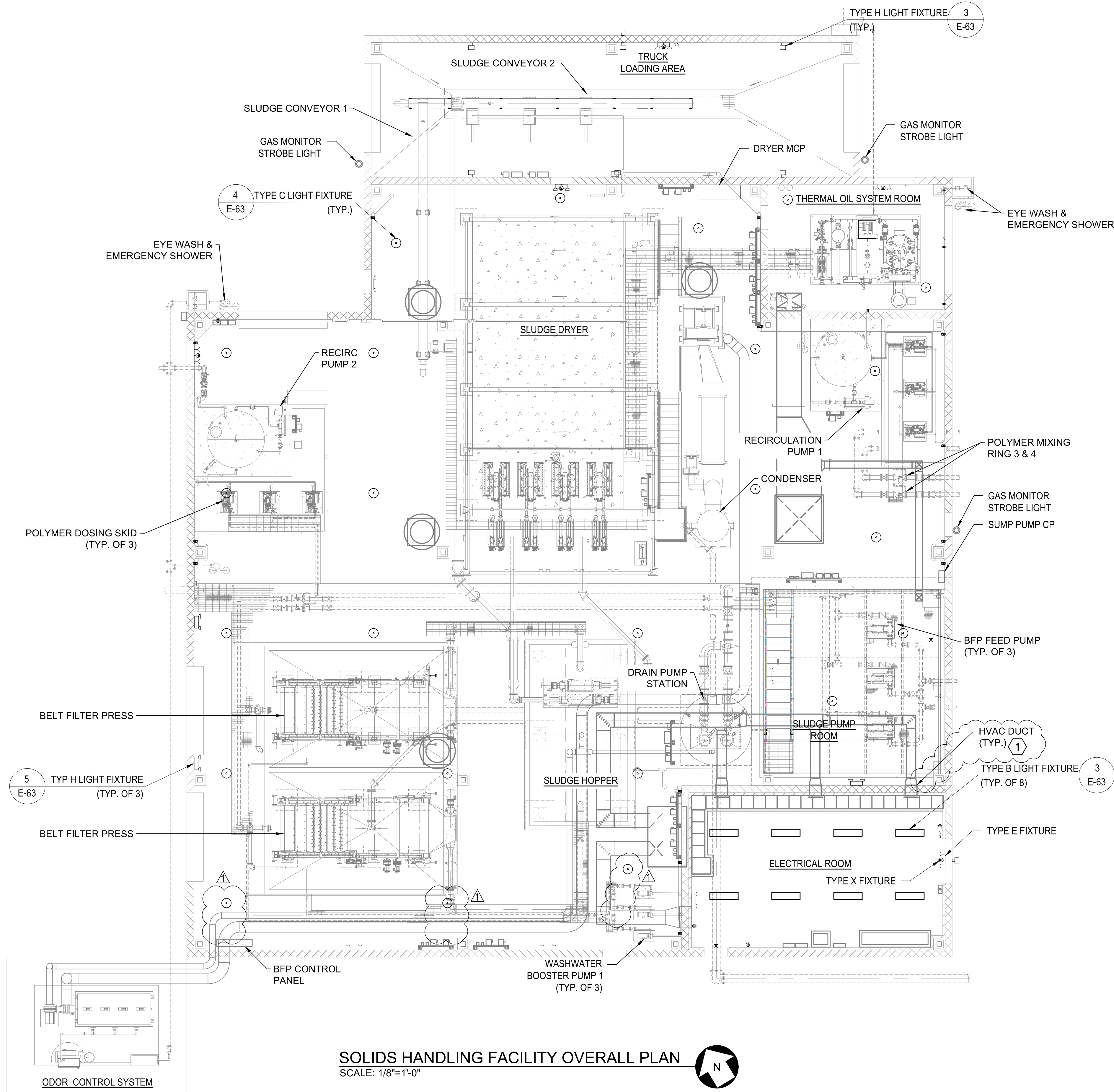
**HARTWELL ENGINEERING, INC.**  
 ENVIRONMENTAL OPERATORS  
 1000 S. GARDNER STREET  
 SUITE 100  
 ATLANTA, GA 30311  
 P: 770-993-0280

PROJ. NO.:	100061831
DESIGNED BY:	RDWINJZ
DRAWN BY:	NCTANJZ
CHECKED BY:	TLH
APPROVED BY:	TLH
DATE:	SEPTEMBER 2020
SCALE:	AS SHOWN
CERTIFICATE OF AUTHORIZATION #	PE070823 EXPIRATION DATE 06/30/2022 HARTWELL ENGINEERING, INC.
DATE	10/30/20
REVISION	ADDENDUM No.3

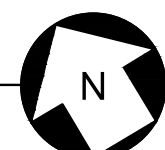
CITY OF CANTON, GEORGIA  
 WATER POLLUTION CONTROL PLANT EXPANSION TO 6 MGD  
 SOLIDS HANDLING FACILITY  
 ELECTRICAL PLAN

SHEET NO.  
**15-E-1**





**SOLIDS HANDLING FACILITY OVERALL PLAN**  
SCALE: 1/8" = 1'-0"



**NOTES:**

- LIGHTING SHALL BE PROVIDED WITH SWITCHES AT DOOR LOCATIONS. PROVIDE OPERATION OF LIGHTS THROUGH MULTIPLE TOGGLE SWITCHES TO OPERATE IN AREAS CONSISTING OF WEST, CENTER, AND EAST IN THE PROCESS AREA.
- FOR ELECTRICAL ROOM, PROVIDE SWITCHES AT BOTH INGRESS LOCATIONS.
- CONTROL TYPE H FIXTURES PER DRAWING E-64.

**KEY NOTES**

1 REFER TO HVAC DRAWINGS FOR DETAILS.



**ATKINS**  
1600 RiverEdge Parkway, N.W., Suite 700  
Atlanta, GA 30328  
P: 770-993-0280

**HARTWELL ENGINEERING, INC.**  
1000 S. GARDNER STREET  
DUBLIN, GA 31024  
P: 770-993-1111

PROJ. NO.:	DESIGNED BY:	CERTIFICATE OF AUTHORIZATION #	EXPIRATION DATE	REVISION	DATE
100061831	RDWINJZ	PE0707823	10/30/2022	ADDENDUM No.3	10/30/20
	DRAWN BY: NCTANJZ				
	CHECKED BY: TLH				
	APPROVED BY: TLH				
	DATE: SEPTEMBER 2020				
	SCALE: AS SHOWN				

CITY OF CANTON, GEORGIA  
WATER POLLUTION CONTROL PLANT EXPANSION TO 6 MGD  
**SOLIDS HANDLING FACILITY  
LIGHTING PLAN**

SHEET NO.  
**15-E-2**

