

LEGEND:



DITCH CLEANING
(APPROX. 2,610 FT)

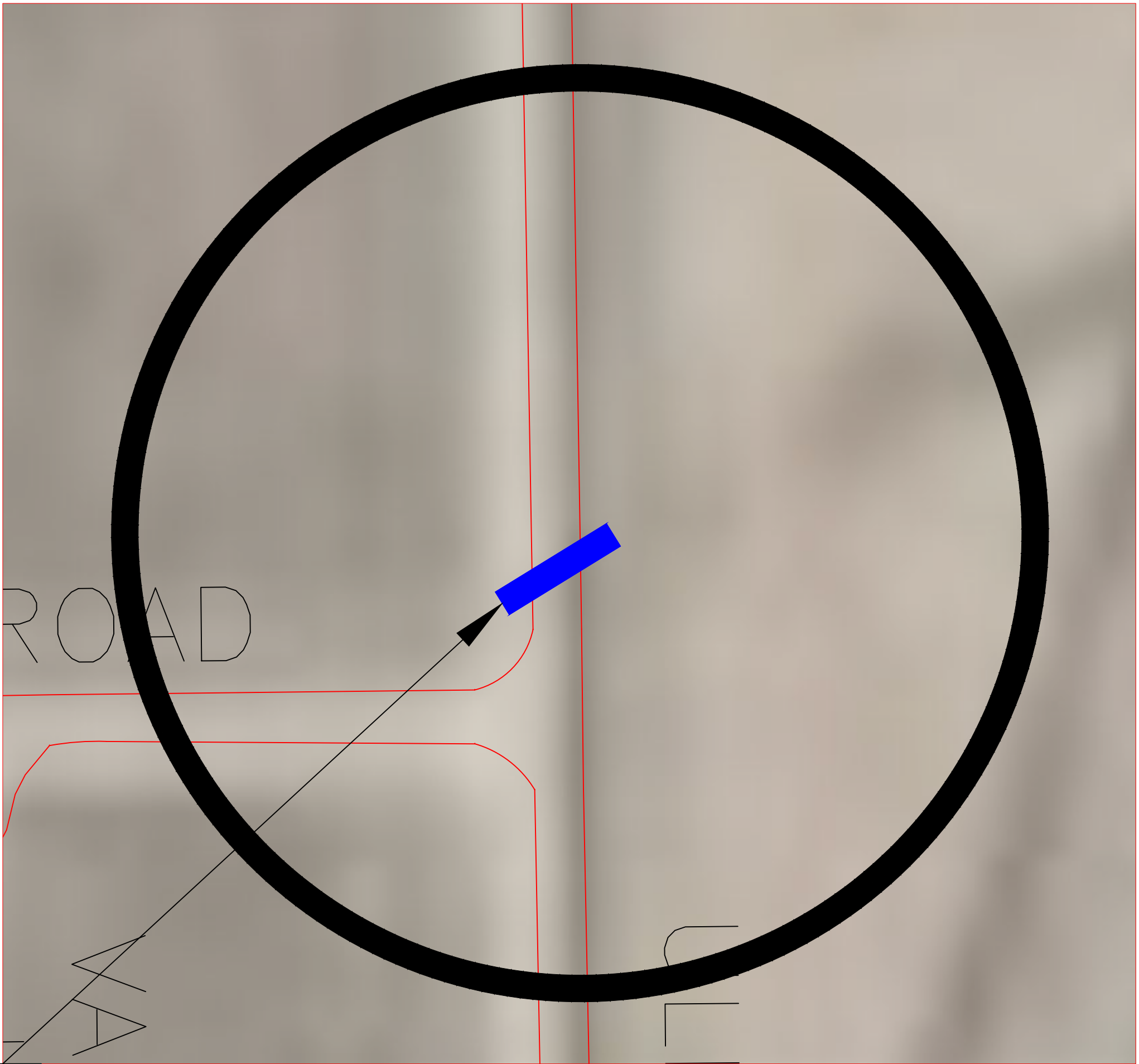


30" RCP REPAIR
(APPROX. 50 LF OF PIPE)

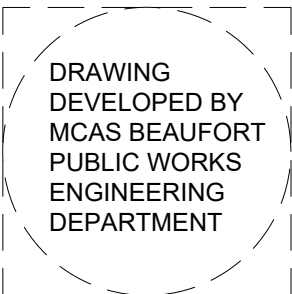
NOTES:

- (1) CONTRACTOR TO PROVIDE ALL REQUIRED SERVICES AND FEES TO MODIFY THE AIRFIELD STORMWATER DESIGN SC OCRM PERMIT FOR THE WORK INCLUDED IN THIS BID OPTION.

REVISIONS		
KEYNOTES		
1) PROVIDE MAINTENANCE GRADING OF DITCHES AS HIGHLIGHTED.		
2) SEED AREAS AFFECTED BY GRADING.		
3) USE BMPs SUCH AS SILT LOGS OR HAY BALES TO RESTRICT SEDIMENT FLOW.		
4) CONFORM TO CONTRACT SPECIFICATIONS & SCDHEC OCRM REGULATIONS.		



CUT ROAD, REPLACE 50 LF OF 30" RCP AND STONE BASE, BACKFILL AND REPAIR ROAD CUT



IF SHEET IS LESS THAN (30"x42") IT IS A REDUCED PRINT; SCALE ACCORDINGLY		ISSUE DATE:	
NATURAL RESOURCES & ENVIRONMENTAL AFFAIRS SATISFACTORY TO DATE	P.W. DWG. NO.	MCAS PUBLIC WORKS ENGINEERING	OPT-001
SAFETY DEPARTMENT SATISFACTORY TO DATE	DRAWN BY: WILSON MCMICHAEL	DEPARTMENT OF THE NAVY NAVAL FACILITIES ENGINEERING COMMAND MARINE CORPS AIR STATION BEAUFORT, S.C.	
FIRE DEPARTMENT SATISFACTORY TO DATE	CHECKED BY:	AIRFIELD STORMWATER REPAIRS (BE2004M)	
PHYSICAL SECURITY SATISFACTORY TO DATE	SUPERVISOR: OWEN WEBB	OPTION 1	
PUBLIC WORKS SUPERVISOR SATISFACTORY TO DATE	APPROVED DATE	SIZE F	CODE IDENT. NO. N A V F A C DRAWING NO.
		HQMC PROJ. NO.:	CONSTR. CONTR. NO.:
	PUBLIC WORKS OFFICER	SCALE:	MACC: T.O.# SHEET OF